



Chipsmall Limited consists of a professional team with an average of over 10 year of expertise in the distribution of electronic components. Based in Hongkong, we have already established firm and mutual-benefit business relationships with customers from,Europe,America and south Asia,supplying obsolete and hard-to-find components to meet their specific needs.

With the principle of “Quality Parts,Customers Priority,Honest Operation,and Considerate Service”,our business mainly focus on the distribution of electronic components. Line cards we deal with include Microchip,ALPS,ROHM,Xilinx,Pulse,ON,Everlight and Freescale. Main products comprise IC,Modules,Potentiometer,IC Socket,Relay,Connector.Our parts cover such applications as commercial,industrial, and automotives areas.

We are looking forward to setting up business relationship with you and hope to provide you with the best service and solution. Let us make a better world for our industry!



## Contact us

Tel: +86-755-8981 8866 Fax: +86-755-8427 6832

Email & Skype: info@chipsmall.com Web: www.chipsmall.com

Address: A1208, Overseas Decoration Building, #122 Zhenhua RD., Futian, Shenzhen, China

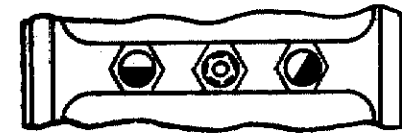
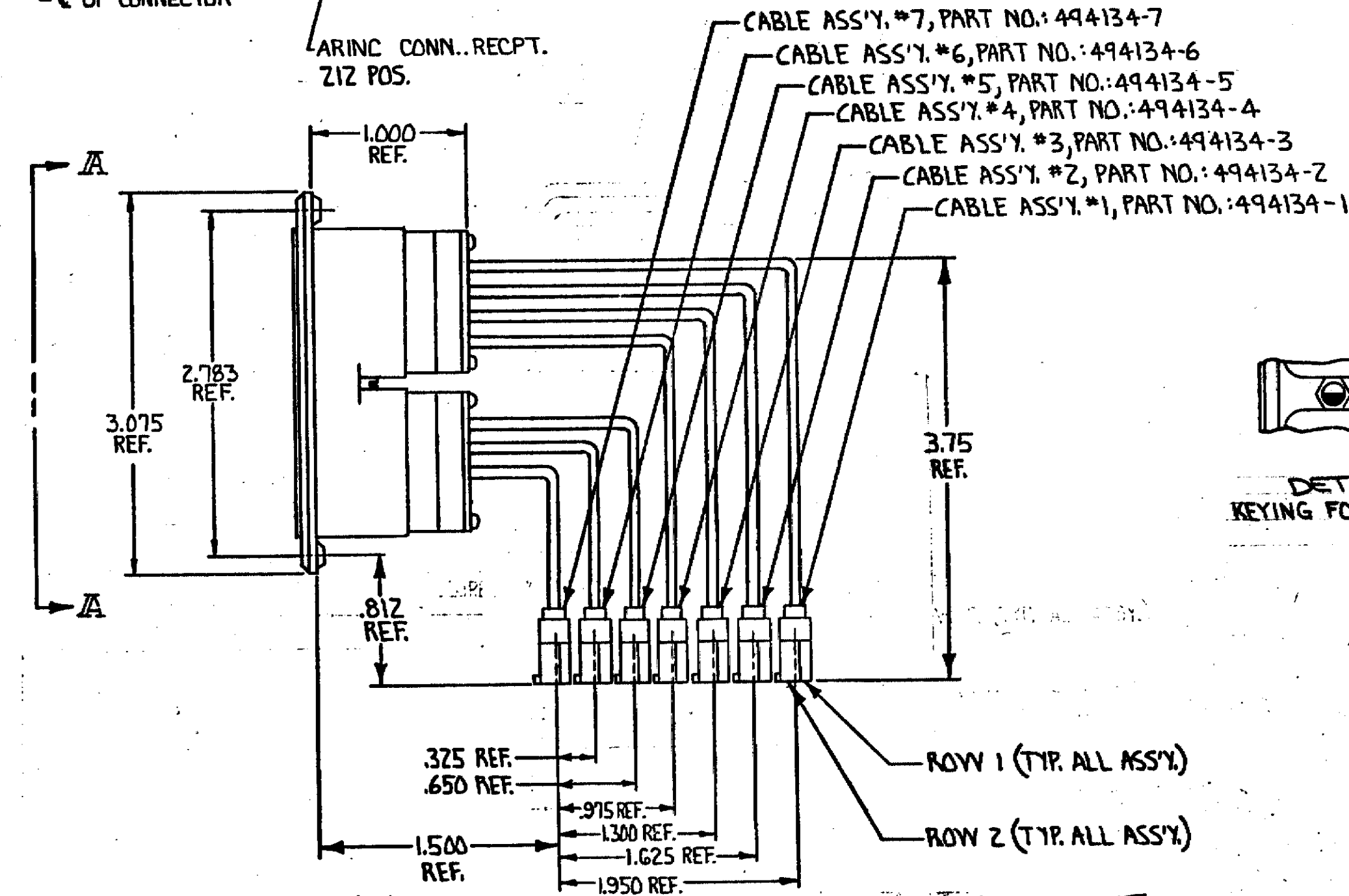
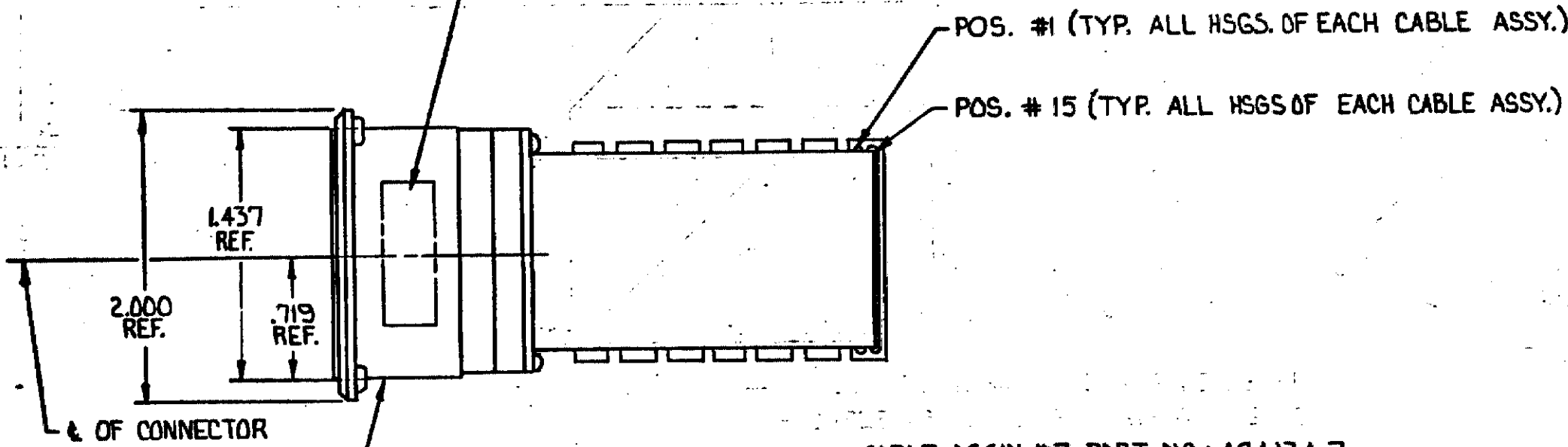


© COPYRIGHT 1980 BY AMP INCORPORATED, HARRISBURG, PA. ALL INTERNATIONAL RIGHTS RESERVED. AMP INCORPORATED PRODUCTS COVERED BY U. S. AND FOREIGN PATENTS AND/OR PATENTS PENDING.

494131-1 I, AS SHOWN  
494131-2 - SAME AS SHOWN EXCEPT FOR KEYING, SEE DETAIL B

AMP AND DATE CODE  
CUSTOMER PART NO. 98571 & ASS'Y.  
PART NO. 847326 INK STAMPED (BLACK)  
.062 ± .015 HIGH CHARS.

REVISIONS					
P	F	ZONE	LTR	DESCRIPTION	DATE APPROVED
0	0			RELEASED	2-11-82
A				ADD -2 / MPR EFB2-19	1-17-85
✓				TRANS. TO C.P.	MPA
✓				REV. PER ECN R-2912	6-27-87
✓				REV/ECN DF-0953	T.M. 10-31-88 TC

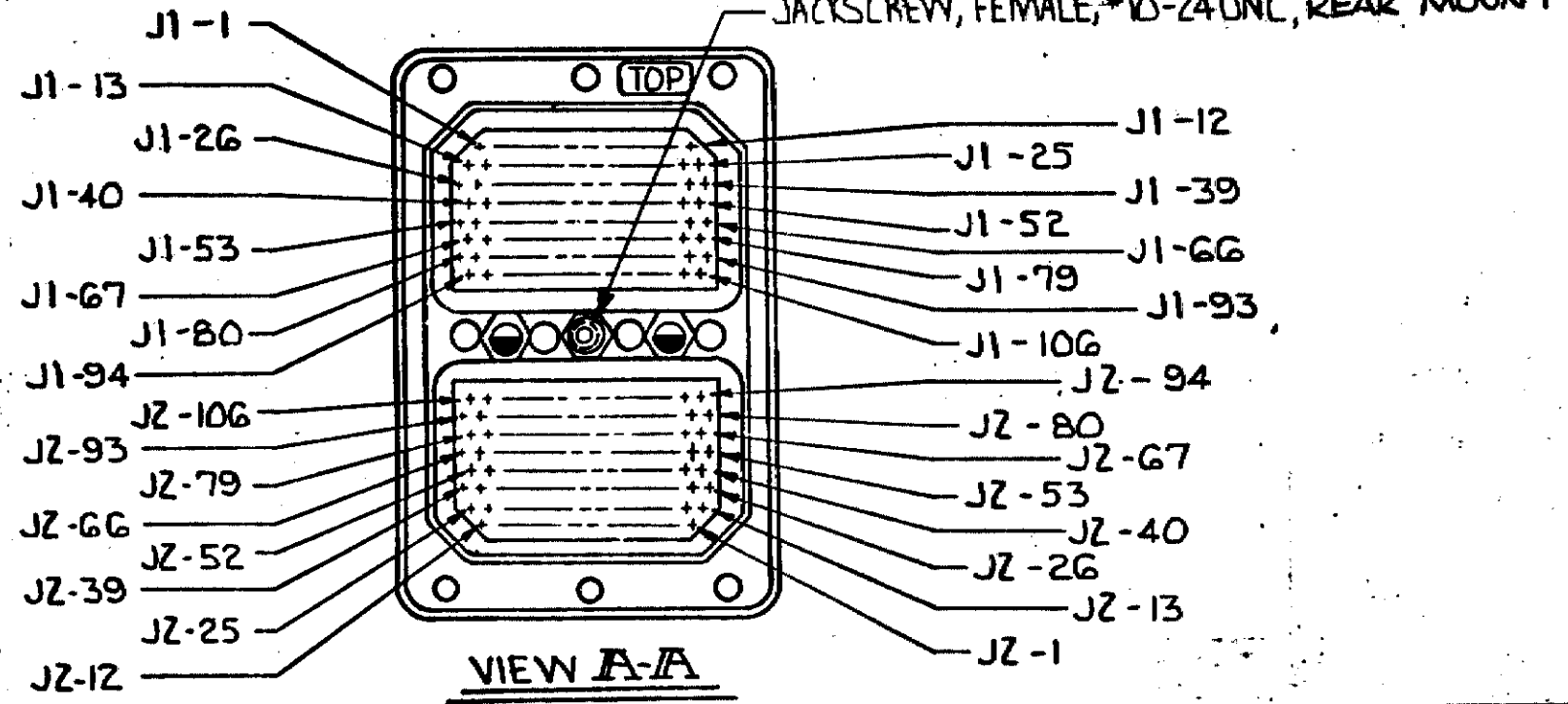


DETAIL B  
KEYING FOR -2 ASSY ONLY

JZ-39 THRU JZ-26	1 THRU 14	2	7	494131
JZ-52	JZ-40 16	28	1	
JZ-66	JZ-53 1	14	2	
JZ-79	JZ-67 16	28	1	
JZ-93	JZ-80 1	14	2	
JZ-106	JZ-94 16	28	1	
J1-94	J1-106 1	13	2	
J1-80	J1-93 15	28	1	
J1-67	J1-79 1	13	2	
J1-53	J1-66 15	28	1	
J1-40	J1-52 1	13	2	
J1-26	J1-39 15	28	1	
J1-13	J1-25 1	13	2	
J1-1 THRU J1-12	16 THRU 27	1	1	

ARINC CONN. POS.	HSG. POS. CABLE ASSY.	ROW	NO.
TO	FROM		

CABLE DESTINATION TABLE



VIEW A-A

UNLESS OTHERWISE SPECIFIED DIMENSIONS ARE IN INCHES. TOLERANCES ON: DECIMALS ± ANGLES ±	CONTRACT NO	AMP INCORPORATED Harrisburg, Pa.	
	DR <i>[Signature]</i> 4-24-80	NAME FLEXIBLE FLAT CABLE ASSY., W/(7) RECPT. CONN'S. & (1) ARINC CONN.	
MATERIAL ARINC CONN. SHELL: ALUMINUM	APPD <i>[Signature]</i> 5-1-80	SIZE C CODE IDENT NO DRAWING NO	
FINISH ARINC CONN. SHELL: CADMIUM PLATED	APPD <i>[Signature]</i> 5-1-80	C 00779	494131
	DSGN APPD	SCALE	SHEET
	OTHER APPD		