



Chipsmall Limited consists of a professional team with an average of over 10 year of expertise in the distribution of electronic components. Based in Hongkong, we have already established firm and mutual-benefit business relationships with customers from,Europe,America and south Asia,supplying obsolete and hard-to-find components to meet their specific needs.

With the principle of “Quality Parts,Customers Priority,Honest Operation,and Considerate Service”,our business mainly focus on the distribution of electronic components. Line cards we deal with include Microchip,ALPS,ROHM,Xilinx,Pulse,ON,Everlight and Freescale. Main products comprise IC,Modules,Potentiometer,IC Socket,Relay,Connector.Our parts cover such applications as commercial,industrial, and automotives areas.

We are looking forward to setting up business relationship with you and hope to provide you with the best service and solution. Let us make a better world for our industry!



Contact us

Tel: +86-755-8981 8866 Fax: +86-755-8427 6832

Email & Skype: info@chipsmall.com Web: www.chipsmall.com

Address: A1208, Overseas Decoration Building, #122 Zhenhua RD., Futian, Shenzhen, China





ESSENTRA

SOLUTIONS FOR FIBER, WIRE & CABLE MANAGEMENT



A new name, making the
same great products

formerly

 **Richco** **ALLIANCE**

ESSENTRA COMPONENTS

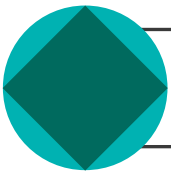
HELPS ELECTRIFY THE WORLD

It's an electronic world. Essentra is a global business dedicated to manufacturing and distributing the essential Fiber, Wire and Cable Management products you use every day. Divided up into three regions; Americas; Europe; Middle East; Africa and Asia, we are uniquely positioned to serve you as never before. Alliance Plastics, Reid Supply and Richco have come together to provide a vast products offering. Look over this catalog and discover the many ways Essentra can charge-up your business.

Over 1 Billion Parts In Stock
65,000 Standard Products
11 Regional Distribution Centers

Free Samples
Free CAD Drawings
Same Day Shipping





CONTENTS

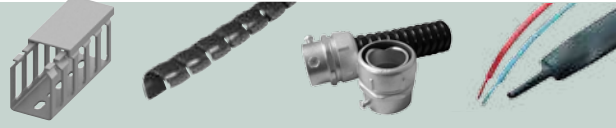
Cable Clamps & Clips

2 - 17, 22



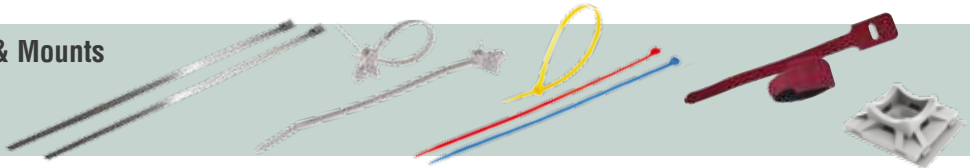
Cable Duct, Conduits & Wraps

56 - 67



Cable Ties & Mounts

35 - 55



Fiber Management

68 - 77



Flat Cable Clamps & Clips

28 - 34



Grommets, Bushings, Plugs & Cable Glands

77 - 101



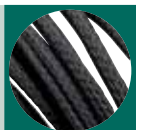
Hose & Pipe Clamps

3 - 4



Hose Protection

62 - 65



Sheet Metal Plugs

81 - 82



Twist Ties

17 - 21



Wire Saddles

22 - 28





CABLE CLAMPS

SPN / SPNW

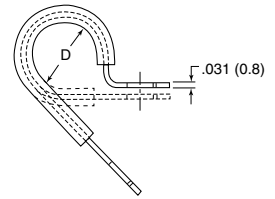
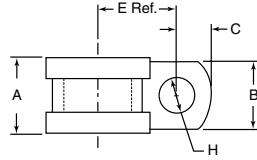
Steel Clamp with Rubber Cushion

Specifications:

- Material: Cold Rolled Steel, Zinc Electroplated, Elastomer Cushion
- Color: Steel with Black Cushion

Features:

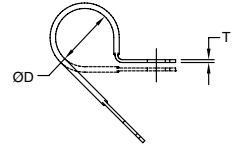
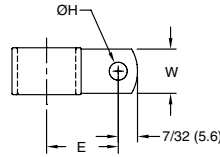
- Provides electrical insulation and vibration absorption
- Ideal for long-life applications



Item No.	D Holding Ø		B		A		H Hole Ø		E Ref.		C		Pack Qty.	Bulk Pack Qty.
	In	mm	In	mm	In	mm	In	mm	In	mm	In	mm		
SPN-3	0.188	4.8	0.500	12.7	0.650	16.5	0.266	6.7	0.500	12.7	0.260	6.6	1	500
SPN-4	0.250	6.4	0.500	12.7	0.650	16.5	0.266	6.7	0.530	13.5	0.260	6.6	1	500
SPNW-4	0.250	6.4	0.625	15.9	0.750	19.1	0.406	10.3	0.530	13.5	0.313	7.9	1	100
SPN-5	0.313	7.9	0.500	12.7	0.650	16.5	0.266	6.7	0.560	14.2	0.260	6.6	1	500
SPNW-5	0.313	7.9	0.625	15.9	0.750	19.1	0.406	10.3	0.560	14.2	0.313	7.9	1	100
SPN-6	0.375	9.5	0.500	12.7	0.650	16.5	0.266	6.7	0.590	15	0.260	6.6	1	500
SPNW-6	0.375	9.5	0.625	15.9	0.750	19.1	0.406	10.3	0.590	15	0.313	7.9	1	100
SPN-7	0.438	11.1	0.500	12.7	0.650	16.5	0.266	6.7	0.620	15.7	0.260	6.6	1	500
SPNW-7	0.438	11.1	0.625	15.9	0.750	19.1	0.406	10.3	0.620	15.7	0.313	7.9	1	100
SPN-8	0.500	12.7	0.500	12.7	0.650	16.5	0.266	6.7	0.650	16.5	0.260	6.6	1	500
SPNW-8	0.500	12.7	0.625	15.9	0.750	19.1	0.406	10.3	0.650	16.5	0.313	7.9	1	100
SPN-9	0.563	14.3	0.500	12.7	0.650	16.5	0.266	6.7	0.750	19.1	0.260	6.6	1	500
SPN-10	0.625	15.9	0.500	12.7	0.650	16.5	0.266	6.7	0.780	19.8	0.260	6.6	1	500
SPNW-10	0.625	15.9	0.625	15.9	0.750	19.1	0.406	10.3	0.780	19.8	0.313	7.9	1	100
SPN-11	0.688	17.5	0.500	12.7	0.650	16.5	0.266	6.7	0.810	20.6	0.260	6.6	1	500
SPNW-11	0.688	17.5	0.625	15.9	0.750	19.1	0.406	10.3	0.810	20.6	0.313	7.9	1	100
SPN-12	0.750	19.1	0.500	12.7	0.650	16.5	0.266	6.7	0.840	21.3	0.260	6.6	1	500
SPN-14	0.875	22.2	0.500	12.7	0.650	16.5	0.266	6.7	0.900	22.9	0.260	6.6	1	100
SPNW-14	0.875	22.2	0.625	15.9	0.750	19.1	0.406	10.3	0.900	22.9	0.313	7.9	1	100
SPN-16	1.000	25.4	0.500	12.7	0.650	16.5	0.266	6.7	0.960	24.4	0.260	6.6	1	100
SPNW-16	1.000	25.4	0.625	15.9	0.750	19.1	0.406	10.3	0.960	24.4	0.313	7.9	1	100
SPN-18	1.125	28.6	0.500	12.7	0.650	16.5	0.266	6.7	1.050	26.7	0.260	6.6	1	100
SPN-20	1.250	31.8	0.500	12.7	0.650	16.5	0.266	6.7	1.110	28.2	0.260	6.6	1	100
SPNW-20	1.250	31.8	0.625	15.9	0.750	19.1	0.406	10.3	1.110	28.2	0.313	7.9	1	100

NE

Aluminum Clamp with Vinyl Coating



Specifications:

- Material: Aluminum Alloy 5052 H-32, TPV Coating
- Color: Aluminum with Black Coating

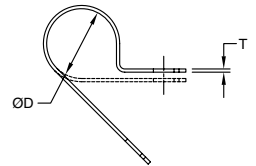
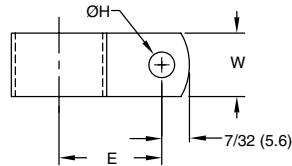
Features:

- Vinyl coating allows a more permanent solution for protecting cables against vibration
- Screw mount area is bare to ensure firm tightening

Item No.	Holding Ø D		Ø H Hole		E Ref.		T		W		Pack Qty.	Bulk Pack Qty.
	In	mm	In	mm	In	mm	In	mm	In	mm		
NE3	3/16	4.8	.204	5.2	.50	12.7	1/32	0.8	3/8	9.5	1	1000
NE4	1/4	6.4	.204	5.2	.53	13.5	1/32	0.8	3/8	9.5	1	1000
NE5	5/16	7.9	.204	5.2	.56	14.2	1/32	0.8	3/8	9.5	1	1000
NE6	3/8	9.5	.204	5.2	.59	15.0	1/32	0.8	3/8	9.5	1	1000
NE7	7/16	11.1	.204	5.2	.62	15.7	1/32	0.8	3/8	9.5	1	1000
NE8	1/2	12.7	.204	5.2	.65	16.5	1/32	0.8	3/8	9.5	1	1000
NE9	9/16	14.3	.204	5.2	.75	19.1	1/32	0.8	3/8	9.5	1	1000
NE10	5/8	15.9	.204	5.2	.78	19.8	1/32	0.8	3/8	9.5	1	1000
NE11	11/16	17.5	.204	5.2	.81	20.6	1/16	1.6	1/2	12.7	1	500
NE12	3/4	19.1	.204	5.2	.84	21.3	1/16	1.6	1/2	12.7	1	500
NE14	7/8	22.2	.204	5.2	.90	22.9	1/16	1.6	1/2	12.7	1	500
NE16	1	25.4	.204	5.2	.96	24.4	1/16	1.6	1/2	12.7	1	500
NE18	1-1/8	28.6	.204	5.2	1.05	26.7	1/16	1.6	1/2	12.7	1	500
NE20	1-1/4	31.8	.204	5.2	1.11	28.2	1/16	1.6	1/2	12.7	1	500

AL

Aluminum Clamp



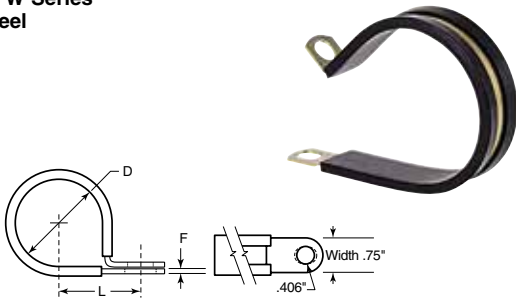
Specifications:

- Material: Aluminum Alloy 5052 H-32
- Color: Aluminum

Item No.	Holding Ø D		Ø H Hole		E Ref.		T		W		Pack Qty.	Bulk Pack Qty.
	In	mm	In	mm	In	mm	In	mm	In	mm		
AL2A	1/8	3.2	.204	5.2	.46	11.7	1/32	0.8	3/8	9.5	1	1000
AL3A	3/16	4.8	.204	5.2	.50	12.7	1/32	0.8	3/8	9.5	1	1000
AL4A	1/4	6.4	.204	5.2	.53	13.5	1/32	0.8	3/8	9.5	1	1000
AL5A	5/16	7.9	.204	5.2	.56	14.2	1/32	0.8	3/8	9.5	1	1000
AL6A	3/8	9.5	.204	5.2	.59	15.0	1/32	0.8	3/8	9.5	1	1000
AL7A	7/16	11.1	.204	5.2	.62	15.7	1/32	0.8	3/8	9.5	1	1000
AL8A	1/2	12.7	.204	5.2	.65	16.5	1/32	0.8	3/8	9.5	1	1000
AL9A	9/16	14.3	.204	5.2	.75	19.1	1/32	0.8	3/8	9.5	1	1000
AL10A	5/8	15.9	.204	5.2	.78	19.8	1/32	0.8	3/8	9.5	1	1000
AL11	11/16	17.5	.204	5.2	.81	20.6	1/32	0.8	1/2	12.7	1	500
AL12	3/4	19.1	.204	5.2	.84	21.3	1/32	0.8	1/2	12.7	1	500
AL14	7/8	22.2	.204	5.2	.90	22.9	1/32	0.8	1/2	12.7	1	500
AL16	1	25.4	.204	5.2	.96	24.4	1/16	1.6	1/2	12.7	1	500
AL18	1-1/8	28.6	.204	5.2	1.05	26.7	1/16	1.6	1/2	12.7	1	500
AL20	1-1/4	31.8	.204	5.2	1.11	28.2	1/16	1.6	1/2	12.7	1	500



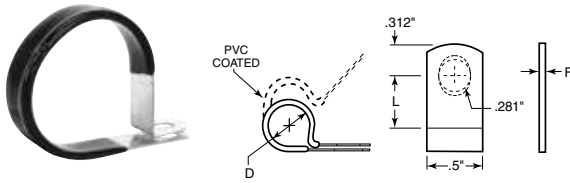
**Loop Clamps
SPW Series
Steel**



- Light to medium duty steel clamp
- EPDM cushion for electrical insulation and vibration absorption
- Steel clamps are zinc electroplated for corrosion resistance
- Temperature range -50 degrees Fahrenheit to +275 degrees Fahrenheit

Item No.	Size	D	L	F	Pack Qty.
ZS-454	¼	.250	.656	.031	1
ZS-456	⅜	.375	.718	.031	1
ZS-458	½	.500	.781	.031	1
ZS-460	⅝	.625	.843	.031	1
ZS-462	¾	.750	.906	.031	1
ZS-464	1	1.000	1.031	.031	1
ZS-466	1½	1.125	1.093	.050	1
ZS-468	1¼	1.250	1.000	.032	1
ZS-470	1½	1.500	1.218	.032	1
ZS-472	2	2	1.468	.040	1

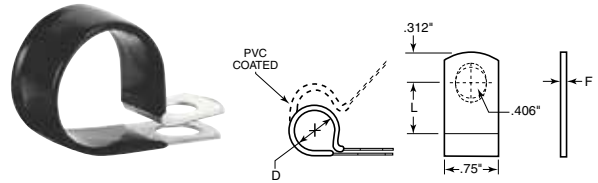
**Loop Clamps
SVN Series
Steel**



- Medium duty steel clamp that can be slipped over a tube or wire and closed with a bolt at assembly. Holes provide easy alignment. Its pre-developed shape allows for proper closing and excellent fit of the clamp.
- Galvanized steel
- PVC coated, black color
- Temperature range -25 degrees Fahrenheit to +160 degrees Fahrenheit

Item No.	Size	D	L	F	Pack Qty.
ZS-474	⅜	.187	.500	.032	1
ZS-476	¼	.250	.531	.032	1
ZS-478	⅜	.312	.562	.032	1
ZS-480	⅝	.375	.593	.032	1
ZS-482	½	.500	.656	.048	1
ZS-484	⅝	.562	.687	.048	1
ZS-486	¾	.625	.718	.048	1
ZS-488	¾	.750	.781	.048	1
ZS-490	7/8	.875	.843	.048	1
ZS-492	1	1.000	.906	.048	1
ZS-494	1½	1.125	.968	.048	1

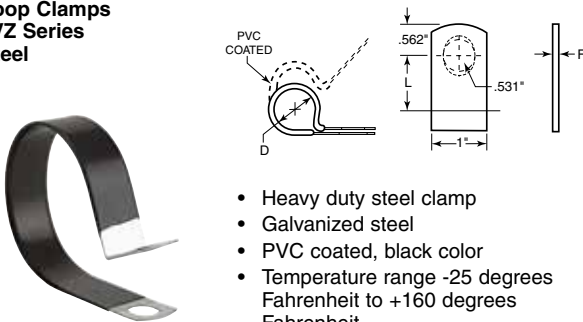
**Loop Clamps
SVW Series
Steel**



- Medium duty steel clamp that can be slipped over a tube or wire and closed with a bolt at assembly. Holes provide easy alignment. Its pre-developed shape allows for proper closing and excellent fit of the clamp
- Galvanized steel
- PVC coated, black color
- Temperature range -25 degrees Fahrenheit to +160 degrees Fahrenheit

Item No.	Size	D	L	F	Pack Qty.
ZS-496	¼	.250	.656	.032	1
ZS-498	⅜	.375	.718	.032	1
ZS-500	½	.500	.781	.048	1
ZS-502	⅝	.562	.812	.048	1
ZS-504	¾	.625	.843	.048	1
ZS-506	¾	.750	.906	.048	1
ZS-508	13/16	.812	.937	.048	1
ZS-510	7/8	.875	.968	.048	1
ZS-512	15/16	.937	1.000	.048	1
ZS-514	1	1.000	1.031	.048	1
ZS-516	1 1/16	1.050	1.062	.048	1
ZS-518	1 1/8	1.125	1.092	.048	1

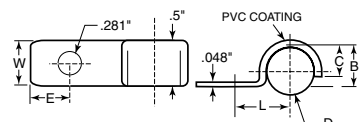
**Loop Clamps
LVZ Series
Steel**



- Heavy duty steel clamp
- Galvanized steel
- PVC coated, black color
- Temperature range -25 degrees Fahrenheit to +160 degrees Fahrenheit

Item No.	Size	D	L	F	Pack Qty.
ZS-520	1 1/8	1.130	1.218	.048	1
ZS-522	1 1/16	1.190	1.250	.048	1
ZS-524	1 1/4	1.250	1.281	.048	1
ZS-526	1 3/16	1.310	1.312	.048	1
ZS-528	1 1/2	1.500	1.406	.048	1
ZS-530	1 5/16	1.560	1.437	.048	1
ZS-532	1 3/4	1.750	1.531	.048	1
ZS-534	1 7/16	1.810	1.562	.048	1
ZS-536	2	2.000	1.687	.048	1
ZS-538	2 1/16	2.060	1.718	.048	1
ZS-540	2 1/4	2.250	1.812	.048	1
ZS-542	2 1/2	2.500	1.937	.048	1
ZS-544	2 5/8	2.630	2.000	.048	1
ZS-546	2 3/4	2.750	2.062	.048	1
ZS-548	2 7/8	2.880	2.125	.048	1
ZS-550	3 1/16	3.560	2.437	.048	1

**Loop Clamps
HVN Series
Steel**



Item No.	Size	D	L	E	B	C	W	Pack Qty.
ZS-552	¼	.250	.500	.250	.250	.188	½	1
ZS-554	⅜	.312	.531	.312	.312	.218	⅝	1
ZS-556	½	.375	.562	.312	.375	.281	¾	1
ZS-558	⅝	.500	.687	.312	.500	.343	⅞	1
ZS-560	¾	.562	.750	.312	.562	.437	1	1
ZS-562	¾	.625	.812	.312	.625	.406	⅞	1
ZS-564	¾	.750	.875	.312	.750	.468	1	1

- Black vinyl plastic coated (PVC)
- Galvanized steel for corrosion resistance
- Temperature range -25 degrees Fahrenheit to +160 degrees Fahrenheit

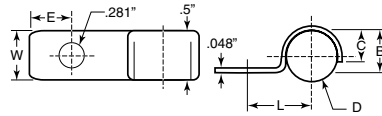


HOSE & PIPE CLAMPS

Loop Clamps
HSN Series



- Stainless steel 1/2" wide
- Type 301 or 304



Item No.	Size	D	L	E	B	C	W	Pack Qty.
ZS-566	1/4	.250	.500	.250	.250	.188	1/2	1
ZS-568	5/16	.312	.531	.312	.312	.218	5/8	1
ZS-570	3/8	.375	.562	.312	.375	.281	3/4	1
ZS-572	1/2	.500	.687	.312	.500	.343	3/4	1
ZS-574	5/8	.562	.750	.312	.562	.437	3/4	1
ZS-576	3/4	.625	.812	.312	.625	.406	3/4	1
ZS-578	7/8	.750	.875	.312	.750	.468	3/4	1

MHC Series

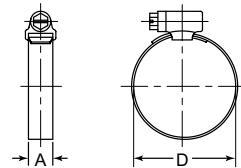
Mini Worm Gear Hose Clamps

Specifications:

- Band and Housing: Stainless steel
- Screw: 1/4 inch hex-head. Plated carbon steel

Features:

- To be used on small hose applications
- Low profile housing and thin band make them easier to install or remove in confined areas

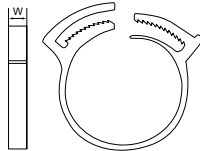


Item No.	SAE Size	Diameter Range D		A (In)	Pack Qty.	Bulk Pack Qty.
		Min (In)	Max (In)			
MHC04A	4	0.250	0.625	0.312	1	100
MHC05A	5	0.250	0.687	0.312	1	100
MHC06A	6	0.312	0.875	0.312	1	100
MHC08A	8	0.375	1.000	0.312	1	100
MHC10A	10	0.375	1.062	0.312	1	100
MHC12A	12	0.500	1.250	0.312	1	50
MHC16A	16	0.500	1.500	0.312	1	50
MHC20A	20	0.750	1.750	0.312	1	50

Item No.	SAE Size	Diameter Range D		A (In)	Pack Qty.	Bulk Pack Qty.
		Min (In)	Max (In)			
MHC24A	24	1.000	2.000	0.312	1	50
MHC28A	28	1.250	2.250	0.312	1	20
MHC30A	30	1.375	2.375	0.312	1	25
MHC32A	32	1.500	2.500	0.312	1	25
MHC36A	36	1.750	2.750	0.312	1	25
MHC44A	44	2.250	3.250	0.312	1	20
MHC48A	48	2.500	3.500	0.312	1	20

THC & SHC Series

Quick Assemble Hose Clamps



Specifications:

- Material: THC Series - UL94V-2 Nylon 6/6
SHC Series - UL94 HB Nylon 6/6
- Color: THC Series: Black
SHC Series: White

Features:

- Quick and easy assembly or removal
- Adjustable locking range to fit various diameters
- Excellent for securing the ends of textile covers to the hose assembly

Item No.	Bundle Range		W		Pack Qty.	Bulk Pack Qty.
	In	mm	In	mm		
THC1A	0.260 - 0.315	6.6 - 8.0	0.197	5.0	1	100
THC2A	0.315 - 0.362	8.0 - 9.2	0.197	5.0	1	100
SHC-23	0.359 - 0.390	9.1 - 9.9	0.220	5.6	1	100
THC3A	0.362 - 0.413	9.2 - 10.5	0.197	5.0	1	100
SHC-26	0.390 - 0.468	9.9 - 11.9	0.220	5.6	1	100
THC4A	0.413 - 0.472	10.5 - 12.0	0.236	6.0	1	100
SHC-30	0.468 - 0.531	11.9 - 13.5	0.220	5.6	1	100
THC6A	0.504 - 0.591	12.8 - 15.0	0.276	7.0	1	100
SHC-32	0.531 - 0.593	13.5 - 15.1	0.220	5.6	1	100
THC7A	0.591 - 0.677	15.0 - 17.2	0.276	7.0	1	100
SHC-38	0.593 - 0.674	15.1 - 16.7	0.220	5.6	1	100
THC8A	0.670 - 0.728	17.0 - 18.5	0.276	7.0	1	100
SHC-44	0.687 - 0.812	17.5 - 20.6	0.220	5.6	1	100
THC9A	0.717 - 0.807	18.2 - 20.5	0.276	7.0	1	100
SHC-50	0.750 - 0.875	19.1 - 22.2	0.220	5.6	1	100
THC10A	0.807 - 0.906	20.5 - 23.0	0.276	7.0	1	100
THC11A	0.866 - 0.984	22.0 - 25.0	0.276	7.0	1	100
SHC-56	0.875 - 1.000	22.2 - 25.4	0.220	5.6	1	100
SHC-62	0.953 - 1.093	24.2 - 27.8	0.310	7.9	1	100
THC12A	0.984 - 1.102	25.0 - 28.0	0.276	7.0	1	100

Item No.	Bundle Range		W		Pack Qty.	Bulk Pack Qty.
	In	mm	In	mm		
THC13A	1.063 - 1.181	27.0 - 30.0	0.295	7.5	1	100
SHC-68	1.093 - 1.187	26.2 - 30.2	0.310	7.9	1	100
THC14A	1.161 - 1.280	29.5 - 32.5	0.295	7.5	1	100
THC15A	1.280 - 1.398	32.5 - 35.5	0.315	8.00	1	100
SHC-80	1.250 - 1.437	31.8 - 36.5	0.310	7.9	1	100
THC16A	1.378 - 1.516	35.0 - 38.5	0.315	8.0	1	50
SHC-92	1.406 - 1.625	35.7 - 41.3	0.360	9.1	1	100
THC17A	1.496 - 1.634	38.0 - 41.5	0.315	8.0	1	50
THC18A	1.614 - 1.752	41.0 - 44.5	0.315	8.0	1	50
THC19A	1.732 - 1.870	44.0 - 47.5	0.315	8.0	1	50
THC20A	1.850 - 1.988	47.0 - 50.5	0.315	8.0	1	50
THC21A	1.969 - 2.106	50.0 - 53.5	0.315	8.0	1	50
THC22A	2.087 - 2.244	53.0 - 57.0	0.315	8.0	1	50
SHC-134	2.125 - 2.375	54.0 - 60.3	0.400	10.2	1	100
THC23A	2.224 - 2.382	56.5 - 60.5	0.315	8.0	1	50
THC24A	2.362 - 2.559	60.0 - 65.0	0.315	8.0	1	50
THC25A	2.598 - 2.756	66.0 - 70.0	0.315	8.0	1	50
THC26A	2.756 - 2.953	70.0 - 75.0	0.315	8.0	1	50
THC27A	2.992 - 3.150	76.0 - 80.0	0.315	8.0	1	50
THC28A	3.150 - 3.346	80.0 - 85.0	0.315	8.0	1	50



WHC
Wire Harness Clamp

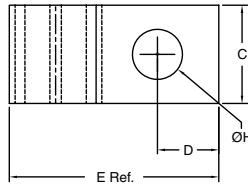


Specifications:

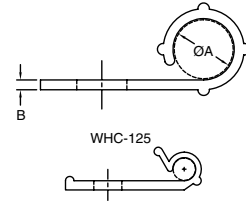
- Material: UL94 V-2 Nylon 6/6
- Color: See Table

Features:

- Cables can be removed for wiring changes or replacements



WHC-250 to WHC-1500



Item No.		Approval	A Holding Ø		H Hole Ø		C		B		D		E Ref.		Bulk Pack Qty.
Natural	Black		In	mm	In	mm	In	mm	In	mm	In	mm	In	mm	
WHC-125-01	WHC-125-01BK	RU	0.125	3.2	0.156	4	0.330	8.4	0.050	1.3	0.230	5.8	0.750	19.1	1000
WHC-250-01	WHC-250-01BK	RU	0.250	6.4	0.204	5.2	0.400	10.2	0.040	1	0.250	6.4	0.830	21.1	1000
WHC-375-01	WHC-375-01BK	RU	0.375	9.5	0.204	5.2	0.400	10.2	0.050	1.3	0.190	4.8	0.830	21.1	1000
WHC-500-01	WHC-500-01BK	RU	0.500	12.7	0.204	5.2	0.400	10.2	0.070	1.8	0.250	6.4	1.156	29.4	1000
WHC-625-01	WHC-625-01BK	RU	0.625	15.9	0.204	5.2	0.500	12.7	0.080	2	0.190	4.8	1.125	28.6	1000
WHC-750-01	WHC-750-01BK	RU	0.750	19.1	0.204	5.2	0.500	12.7	0.090	2.2	0.190	4.8	1.281	32.5	1000
WHC-1000-01	WHC-1000-01BK	RU	1.000	25.4	0.204	5.2	0.500	12.7	0.090	2.2	0.190	4.8	1.531	38.9	500
WHC-1500-01	WHC-1500-01BK	RU	1.500	38.1	0.204	5.2	0.500	12.7	0.100	2.5	0.190	4.8	2.125	53.9	500

EXWHC
Wire Harness Clamp

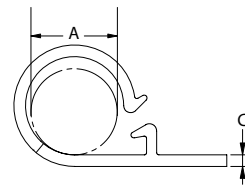
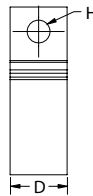


Specifications:

- Material: UL94 V-2 Nylon 6/6
- Color: Natural

Features:

- Cables are easily inserted into clamp and locked in place
- Clamp can be removed for wiring change or replacements



Item No.	A Holding Ø		H Mounting Hole Ø		C		D Ref.		Bulk Pack Qty.
	In	mm	In	mm	In	mm	In	mm	
EXWHC2-250-01	0.250	6.4	0.156	4.0	0.039	1.0	0.394	10.0	1000
EXWHC2-500-01	0.500	12.7	0.156	4.0	0.075	1.9	0.394	10.0	1000
EXWHC2-750-01	0.708	18.0	0.156	4.0	0.075	1.9	0.500	12.7	1000

BHLWHC
Blind Hole Mounted Clamp

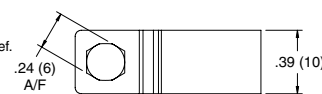
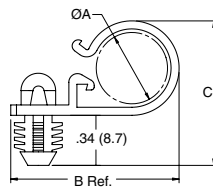


Specifications:

- Material: UL94 V-2 Nylon 6/6
- Color: Natural

Features:

- Easily pushed into mounting hole using a standard 6mm hexagonal socket pressed onto mounting head
- Releasable & reusable for easy wire bundling



Item No.	A Max Bundle Ø		Mounting Hole Ø		B		C		Panel Thickness		Bulk Pack Qty.
	In	mm	In	mm	In	mm	In	mm	In	mm	
BHLWHC-500-01	0.500	12.7	0.312	7.9	1.150	29.3	1.000	25.4	0.250	6.4	1000
BHLWHC-750-01	0.750	19.1	0.312	7.9	1.440	36.5	1.340	34.1	0.250	6.4	1000

SMWHC
Stud Mount Wire Harness Clip

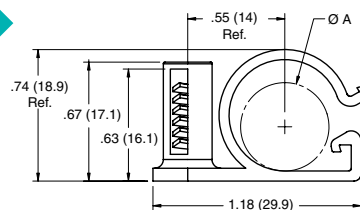


Specifications:

- Material: UL94 V-2 Nylon 6/6
- Color: Natural

Features:

- Installed by pushing clamp onto an exposed screw or stud
- No protrusion under the chassis
- Fits several different threads; M4, M5, #8, or #10

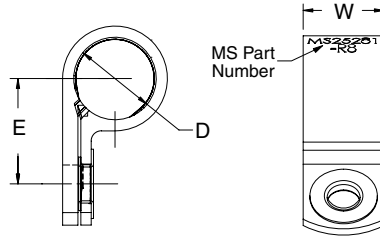


Item No.	A Holding Ø		Mounting Method	Bulk Pack Qty.
	In	mm		
SMWHC-500-01	0.5	12.7	Push onto a #8, #10, M4 or M5 Screw or Stud	500



CABLE CLAMPS

**NM - MS25281
Heavy Duty Support Clamp**



Specifications:

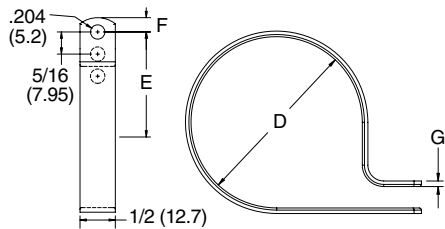
- Material: UL94 V-2 Heat Stabilized Nylon, conforms to MIL-M-20693/ASTM D-4066
- Eyelet: Aluminum, anodized in accordance with MIL-A-8625
- Color: Natural

Features:

- Complies with MS-25281
- Strong & durable part design built for heavy duty cable applications
- NM-R series has a rib running around the inside of the clamp to grip bundle; NM-F series has no rib inside clamp
- NM-R eyelet is crimped to the top leg; the NM-F eyelet's legs protrude all the way through the bottom hole

Item No.	MS Part Number	Bundle Ø D		Recommended Mounting Screw	W		E		Pack Qty.	Bulk Pack Qty.
		In	mm		In	mm	In	mm		
NM-3-R3	MS25281-R3	3/16	4.8	#10 or M5	0.503	12.8	0.485	12.3	1	500
NM-4-R4	MS25281-R4	1/4	6.4	#10 or M5	0.503	12.8	0.510	13.0	1	500
NM-5-R5	MS25281-R5	5/16	7.9	#10 or M5	0.503	12.8	0.546	13.9	1	500
NM-6-R6	MS25281-R6	3/8	9.5	#10 or M5	0.503	12.8	0.578	14.7	1	500
NM-7-R7	MS25281-R7	7/16	11.1	#10 or M5	0.503	12.8	0.608	15.4	1	500
NM-8-R8	MS25281-R8	1/2	12.7	#10 or M5	0.503	12.8	0.639	16.2	1	500
NM-9-R9	MS25281-R9	9/16	14.3	#10 or M5	0.503	12.8	0.661	16.8	1	500
NM-10-R10	MS25281-R10	5/8	15.9	#10 or M5	0.553	14.1	0.706	17.9	1	500
NM-11-R11	MS25281-R11	11/16	17.5	#10 or M5	0.553	14.1	0.785	19.9	1	500
NM-12-R12	MS25281-R12	3/4	19.1	#10 or M5	0.553	14.1	0.816	20.7	1	500
NM-13-R13	MS25281-R13	13/16	20.6	#10 or M5	0.553	14.1	0.827	21.0	1	500
NM-14-R14	MS25281-R14	7/8	22.2	#10 or M5	0.553	14.1	0.878	22.3	1	500
NM-16-R16	MS25281-R16	1	25.4	#10 or M5	0.553	14.1	0.941	23.9	1	500
NM-18-R18	MS25281-R18	1-1/8	28.6	#10 or M5	0.553	14.1	0.983	25.0	1	500
NM-20-R20	MS25281-R20	1-1/4	31.8	#10 or M5	0.553	14.1	1.006	27.1	1	100
NM-22-R22	MS25281-R22	1-3/8	34.9	#10 or M5	0.553	14.1	1.110	28.2	1	100
NM-24-R24	MS25281-R24	1-1/2	38.1	#10 or M5	0.553	14.1	1.170	29.7	1	100
NM-26-R26	MS25281-R26	1-5/8	41.3	#10 or M5	0.553	14.1	1.250	31.8	1	100
NM-28-R28	MS25281-R28	1-3/4	44.5	#10 or M5	0.553	14.1	1.300	33.0	1	100
NM-3-F3	MS25281-F3	3/16	4.8	#10 or M5	0.500	12.7	0.498	12.6	1	500
NM-4-F4	MS25281-F4	1/4	6.4	#10 or M5	0.500	12.7	0.529	13.4	1	500
NM-5-F5	MS25281-F5	5/16	7.9	#10 or M5	0.500	12.7	0.560	14.2	1	500
NM-6-F6	MS25281-F6	3/8	9.5	#10 or M5	0.500	12.7	0.592	15.0	1	500
NM-7-F7	MS25281-F7	7/16	11.1	#10 or M5	0.500	12.7	0.623	15.8	1	500
NM-8-F8	MS25281-F8	1/2	12.7	#10 or M5	0.500	12.7	0.654	16.6	1	500
NM-10-F10	MS25281-F10	5/8	15.9	#10 or M5	0.600	15.2	0.783	19.9	1	500
NM-13-F13	MS25281-F13	13/16	20.6	#10 or M5	0.600	15.2	0.877	22.3	1	500

**NB-3
Adjustable Cable Clamp**



Specifications:

- Material: See Table
- Color: See Table

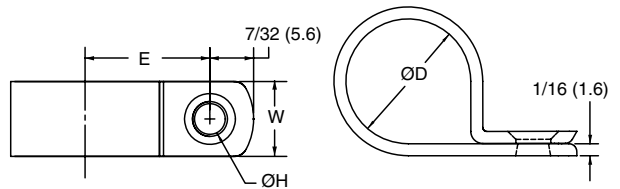
Features:

- Adjustable design allows you to bundle multiple diameters of wires & cables while securing in place
- Clamp down and screw clamp to chassis to secure

Item No.			Bundle Ø D						E Ref.		F		G		Bulk Pack Qty.
UL94 V-2 Nylon 6/6		UL94 V-0 Nylon 6/6	Inside Hole		Center Hole		Outside Hole		In	mm	In	mm	In	mm	
Natural	Black	Natural	In	mm	In	mm	In	mm							
N-20B	N-20B-BK	N-20B-19	1	25.4	1-1/8	28.6	1.2	30.2	0.906	23.0	0.219	5.6	0.063	1.6	500
N-24B	N-24B-BK	N-24B-19	1-1/4	31.8	1-3/8	34.9	1-15/32	37.3	1.031	26.2	0.219	5.6	0.063	1.6	500
N-32B	N-32B-BK	N-32B-19	1-3/4	44.5	1-7/8	47.6	2	50.8	1.453	36.9	0.203	5.2	0.065	1.7	500



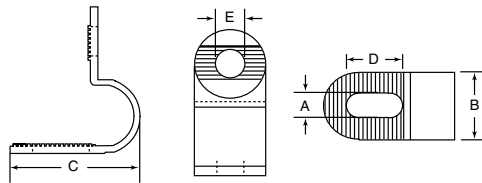
**N / NB
Cable Clamp**



- Specifications:**
- Material: Nylon 6/6
 - Color: Refer to chart
- Features:**
- Designed to secure wires and cables in place
 - Clamp down and screw clamp to chassis to secure

Item No.			D Holding Ø		W		H Hole Ø		E Ref.		Bulk Pack Qty.
Natural UL94 V-2	Black UL94 V-2	Natural UL94 V-0	In	mm	In	mm	In	mm	In	mm	
N-1	N-1-BK	N-1-19	0.063	1.6	0.375	9.5	0.125	3.2	0.270	6.9	1000
N-2	N-2-BK	N-2-19	0.125	3.2	0.375	9.5	0.172	4.4	0.328	8.3	1000
CCL001A	—	—	0.125	3.2	0.377	9.6	0.188	4.8	0.374	9.5	100
N-2B	N-2B-BK	N-2B-19	0.125	3.2	0.500	12.7	0.204	5.2	0.328	8.3	1000
N-3	N-3-BK	N-3-19	0.188	4.7	0.375	9.5	0.172	4.4	0.391	9.9	1000
CCL002A	—	—	0.188	4.7	0.377	9.6	0.188	4.7	0.413	10.5	100
N-3B	N-3B-BK	N-3B-19	0.188	4.7	0.500	12.7	0.204	5.2	0.391	9.9	1000
N-4	N-4-BK	N-4-19	0.250	6.4	0.375	9.5	0.172	4.4	0.422	10.7	1000
CCL003A	—	—	0.250	6.4	0.393	10.0	0.181	4.6	0.394	10.0	100
N-4B	N-4B-BK	N-4B-19	0.250	6.4	0.500	12.7	0.204	5.2	0.422	10.7	1000
N-5	N-5-BK	N-5-19	0.313	7.9	0.375	9.5	0.172	4.4	0.453	11.5	1000
CCL004A	—	—	0.313	7.9	0.393	10.0	0.181	4.6	0.472	12.0	100
N-5B	N-5B-BK	N-5B-19	0.313	7.9	0.500	12.7	0.204	5.2	0.453	11.5	1000
N-6	N-6-BK	N-6-19	0.375	9.5	0.375	9.5	0.172	4.4	0.484	12.3	1000
CCL005A	—	—	0.375	9.5	0.472	12.0	0.181	4.6	0.492	12.5	100
N-6B	N-6B-BK	N-6B-19	0.375	9.5	0.500	12.7	0.204	5.2	0.484	12.3	1000
N-7	N-7-BK	N-7-19	0.438	11.1	0.375	9.5	0.172	4.4	0.531	13.5	1000
N-7B	N-7B-BK	N-7B-19	0.438	11.1	0.500	12.7	0.204	5.2	0.531	13.5	1000
N-8	N-8-BK	N-8-19	0.500	12.7	0.375	9.5	0.172	4.4	0.563	14.3	1000
CCL006A	—	—	0.500	12.7	0.472	12.0	0.196	5.0	0.598	15.2	100
N-8B	N-8B-BK	N-8B-19	0.500	12.7	0.500	12.7	0.204	5.2	0.563	14.3	1000
N-9B	N-9B-BK	N-9B-19	0.563	14.3	0.500	12.7	0.204	5.2	0.594	15.0	1000
CCL007A	—	—	0.625	15.9	0.472	12.0	0.181	4.6	0.717	18.8	100
N-10B	N-10B-BK	N-10B-19	0.625	15.9	0.500	12.7	0.204	5.2	0.625	15.9	1000
N-11B	N-11B-BK	N-11B-19	0.688	17.5	0.500	12.7	0.204	5.2	0.656	16.7	1000
CCL008A	—	—	0.750	19.1	0.463	11.8	0.181	4.6	0.717	18.8	100
N-12B	N-12B-BK	N-12B-19	0.750	19.1	0.500	12.7	0.204	5.2	0.766	19.4	1000
N-14B	N-14B-BK	N-14B-19	0.875	22.2	0.500	12.7	0.204	5.2	0.813	20.6	500
CCL009A	—	—	1.000	25.4	0.472	12.0	0.181	4.6	0.866	22.0	100
N-16B	N-16B-BK	N-16B-19	1.000	25.4	0.500	12.7	0.204	5.2	0.906	23.0	500
CCL010A	—	—	1.062	27.0	0.472	12.0	0.181	4.6	0.945	24.0	100
N-18B	N-18B-BK	N-18B-19	1.125	28.6	0.500	12.7	0.204	5.2	0.969	24.6	500
CCL011A	—	—	1.250	31.8	0.472	12.0	0.181	4.6	1.031	26.2	100
CCL012A	—	—	1.446	36.7	0.472	12.0	0.181	4.6	1.181	30.0	100

**CCLA
Adjustable "P" Clamps**

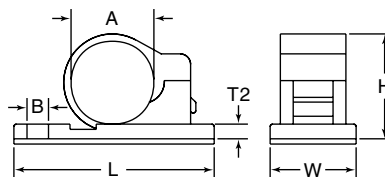


- Specifications:**
- Material: UL94 V-2 Nylon 6/6
 - Color: Natural
- Features:**
- Adjustable sized "P" Style clip designed to secure wires and cables in place
 - Rounded interior edges protect bundles or tubes at insulation
 - To apply, clamp down and screw clamp to chassis to secure



Item No.	A		B		C		D		E		Max Bundle Range		Bulk Pack Qty.
	In	mm	In	mm	In	mm	In	mm	In	mm	In	mm	
CCLA010A	0.197	5.0	0.512	13.0	0.925	23.5	0.409	10.4	0.217	5.5	0.189 - 0.252	4.8 - 6.4	100
CCLA020A	0.197	5.0	0.512	13.0	1.201	30.5	0.634	16.1	0.217	5.5	0.252 - 0.374	6.7 - 9.5	100
CCLA030A	0.197	5.0	0.512	13.0	1.575	40.0	0.815	20.7	0.217	5.5	0.374 - 0.563	9.5 - 14.3	100

**CCA
Self Adhesive Cable Clamps**



- Specifications:**
- Material: UL94 V-2 Nylon 6/6
 - Color: Black

- Features:**
- Fixed diameter clamp range
 - Can be mounted with adhesive tape backing or via screw mounting hole

Item No.	A Ø		B Ø		T2		L		W		H		Bulk Pack Qty.
	In	mm	In	mm	In	mm	In	mm	In	mm	In	mm	
CCA001A	0.236	6.00	0.173	4.40	0.079	2.00	1.016	25.80	0.528	13.40	0.358	9.10	100
CCA002A	0.354	9.00	0.173	4.40	0.118	3.00	1.157	29.40	0.528	13.40	0.551	14.00	100
CCA003A	0.472	12.00	0.173	4.40	0.118	3.00	1.398	35.50	0.646	16.40	0.650	16.50	100
CCA004A	0.551	14.00	0.173	4.40	0.118	3.00	1.437	36.50	0.646	16.40	0.728	18.50	100
CCA005A	0.630	16.00	0.173	4.40	0.118	3.00	1.516	38.50	0.646	16.40	0.807	20.50	100
CCA006A	0.709	18.00	0.173	4.40	0.118	3.00	1.654	42.00	0.646	16.40	0.886	22.50	100



CABLE CLAMPS

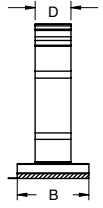
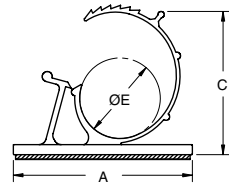
AKKL / CCAA Adhesive Mount Adjustable Clamp

Specifications:

- Material: Nylon 6/6
- Color: See Table

Features:

- Locks securely and easily. Reopens for routing changes
- Ratcheting clip holds bundle securely in place
- Good for high vibration applications. Once closed the clip will not open until tab is released



Item No.		Approval	Color	E Bundle Ø Range Ref.		A		B		C Ref.		D		Bulk Pack Qty.
UL94 V-2	UL94 V-0			In	mm	In	mm	In	mm	In	mm	In	mm	
AKKL-2140A-RT	AKKL-2140A-19	UL	Natural	0.215 - 0.258	5.5 - 6.5	0.850	21.6	0.650	16.5	0.708	18	0.390	10	100
AKKL-3140A-RT	AKKL-3140A-19	UL	Natural	0.312 - 0.406	7.9 - 10.3	1.000	25.4	0.750	19.1	0.866	22	0.400	10.2	100
CCAA001A	—	—	Black	0.312 - 0.406	7.9 - 10.3	1.000	25.4	0.750	19.1	0.874	22.4	0.400	10.2	100
CCAA002A	—	—	Black	0.394 - 0.492	10.1 - 12.5	1.250	31.8	0.750	19.1	1.095	27.8	0.400	10.2	100
AKKL-4756A-RT	AKKL-4756A-19	UL	Natural	0.469 - 0.562	11.9 - 14.3	1.250	31.8	0.750	19.1	1.090	27.7	0.400	10.2	100
CCAA003A	—	—	Black	0.496 - 0.606	12.6 - 15.4	1.500	38.1	0.750	19.1	1.250	31.8	0.500	12.7	100
AKKL-5775A-RT	AKKL-5775A-19	UL	Natural	0.578 - 0.750	14.7 - 19.1	1.500	38.1	0.750	19.1	1.250	31.8	0.500	12.7	100
CCAA004A	—	—	Black	0.650 - 0.791	15.5 - 20.1	2.000	50.8	1.000	25.4	1.750	44.5	0.500	12.7	100
AKKL-8710A-RT	AKKL-8710A-19	UL	Natural	0.875 - 1.000	22.2 - 25.4	2.000	50.8	1.000	25.4	1.750	44.5	0.500	12.7	100
CCAA005A	—	—	Black	0.875 - 1.000	22.2 - 25.4	2.000	50.8	1.000	25.4	1.750	44.5	0.500	12.7	100
AKKL-10112A-RT	AKKL-10112A-19	—	Natural	1.000 - 1.250	25.4 - 31.7	2.500	63.5	1.000	25.4	2.000	50.8	0.500	12.7	100

AKKSL Side Lock Adhesive Mount Adjustable Clamp

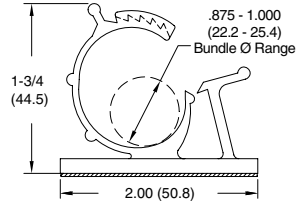
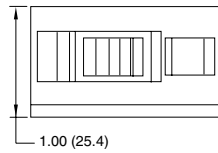


Specifications:

- Material: UL94 V-2 Nylon 6/6
- Color: Natural

Features:

- Side locks on top of clamp prevent clip from sliding open
- Ratcheting clip holds bundle securely in place



Item No.	Approval	Bulk Pack Qty.
AKKSL-8710A-RT	UL	100

PAKKL Snap In Adjustable Clip



Specifications:

- Material: Nylon 6/6
- Color: Natural

Features:

- Gathers and routes cables and wires
- Adjusts to diameter needed to bundle
- Push mount design allows for fast installation

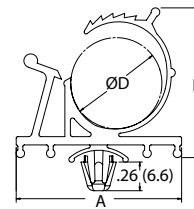
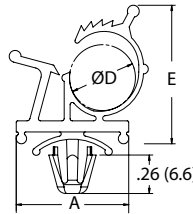


Figure 1

Figure 2



Item No.		Figure	A		Holding Ø D		E Ref.		Mounting Hole Ø		Panel Thickness		Depth		Bulk Pack Qty.
UL94 V-2	UL94 V-0		In	mm	In	mm	In	mm	In	mm	In	mm	In	mm	
PAKKL-3140-01	PAKKL-3140-19	1	0.750	19.1	0.310 - 0.400	7.9 - 10.2	0.940	23.8	0.250	6.4	0.030 - 0.060	0.8 - 1.5	0.350	8.9	100
PAKKL-4756-01	PAKKL-4756-19	1	1.240	31.5	0.469 - 0.563	11.9 - 14.3	1.170	29.8	0.250	6.4	0.030 - 0.060	0.8 - 1.5	0.620	15.7	100
PAKKL-5775-01	PAKKL-5775-19	2	1.500	38.1	0.578 - 0.750	14.7 - 19.1	1.360	34.5	0.250	6.4	0.030 - 0.060	0.8 - 1.5	0.750	19.1	100

PKKL Plug In Locking Clamp

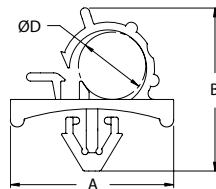


Specifications:

- Material: UL94 V-2 Nylon 6/6
- Color: Natural

Features:

- Part can be opened and closed multiple times for adding or removing wires
- Large contoured base assures stable mounting



Item No.	A		B		Holding Ø D		Mounting Hole Ø		Panel Thickness		Depth		Bulk Pack Qty.
	In	mm	In	mm	In	mm	In	mm	In	mm	In	mm	
PKKL-3	1.020	25.9	0.921	23.4	0.374	9.5	0.256	6.5	0.031 - 0.062	0.8 - 1.6	0.670	17.0	200
PKKL-3S	0.830	21.1	0.828	21.0	0.307	7.8	0.256	6.5	0.031 - 0.062	0.8 - 1.6	0.750	19.1	200
PKKL-4	1.190	30.3	1.260	32.0	0.532	13.5	0.256	6.5	0.031 - 0.062	0.8 - 1.6	10.760	19.4	100



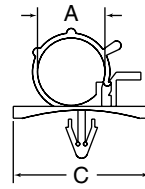
CCP / CCA
Push Mount & Adhesive Clamp

Specifications:

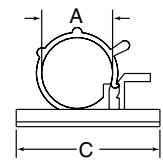
- Material: UL94 V-2 Nylon 6/6
- Color: Grey

Features:

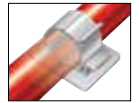
- Two-stage lock design to accommodate different cable sizes in a single clamp
- Easy to reopen with thumb tab release
- Available in two styles: CCP for push mount into pre-drilled hole and CCA with a self adhesive backing



CCP Push Mount



CCA Adhesive



Item No.	A Bundle Ø Range		B		C		Mounting Hole Ø		Panel Thickness		Bulk Pack Qty.	
	Push Mount	Adhesive	In	mm	In	mm	In	mm	In	mm		
CCP001A	CCA007A	0.230 - 0.280	6.0 - 7.0	0.787	20.00	0.984	25.00	0.187	4.80	0.070 - 0.110	1.8 - 2.8	100
CCP002A	CCA008A	0.280 - 0.310	7.0 - 8.0	0.787	20.00	0.984	25.00	0.187	4.80	0.070 - 0.110	1.8 - 2.8	100
CCP003A	CCA009A	0.350 - 0.390	9.0 - 10.0	0.984	25.00	1.181	30.00	0.187	4.80	0.070 - 0.110	1.8 - 2.8	100
CCP004A	CCA010A	0.470 - 0.550	12.0 - 14.0	0.984	25.00	1.181	30.00	0.187	4.80	0.070 - 0.110	1.8 - 2.8	100
CCP005A	CCA011A	0.620 - 0.710	16.0 - 18.0	0.984	25.00	1.181	30.00	0.187	4.80	0.070 - 0.110	1.8 - 2.8	100

WAC
Webbed Adjustable Clip

Specifications:

- Material: UL94 V-2 Nylon 6/6
- Color: Natural

Features:

- Locks securely and easily. Reopens for routing changes
- Adjustable, ratcheting clip holds bundle securely in place
- Spring in the top of the clamp adds additional tension to grip the bundle
- Finger grip eases installation
- Cupped base adds stability to the mounting and covers the hole completely

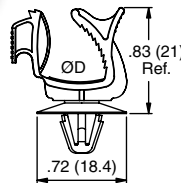


Figure 1

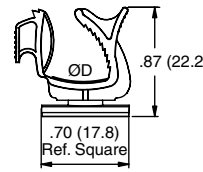


Figure 2



Item No.	D Bundle Ø		Mounting Hole Ø		Panel Thickness		Figure	Bulk Pack Qty.
	In	mm	In	mm	In	mm		
WAC1-01	.12 - .34	3.0 - 8.5	.157 - .189	4.0 - 4.8	.019 - .063	0.5 - 1.6	1	1000
WAC2-01	.12 - .34	3.0 - 8.5	.236 - .267	6.0 - 6.8	.019 - .098	0.5 - 2.5	1	1000
WAC3-01A4-RT	.12 - .34	3.0 - 8.5	Adhesive	Adhesive	Adhesive	Adhesive	2	1000

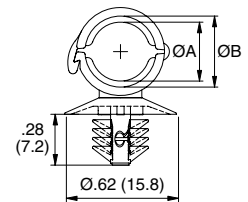
HLCC
Hinged Locking Clamp

Specifications:

- Material: Heat Stabilized UL94 V-2 Nylon 6/6
- Color: Black

Features:

- Securely holds corrugated/convoluted tubing or other bundles
- An internal rib spanning the diameter of the clamp provides a tight grip
- Releasable latch convenient for maintenance
- Fir-tree mount accommodates a large range of panel thicknesses

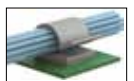
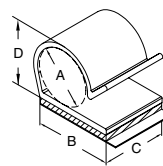


Item No.	Recommended Corrugated Tube Size				Mounting Hole Ø		Panel Thickness		A Ref.		B Ref.		Bulk Pack Qty.
	I.D.		O.D.		In	mm	In	mm	In	mm	In	mm	
	In	mm	In	mm									
HLCC-1BK	.20	5.0	.28	7.1	.26 - .28	6.5 - 7.0	.03 - .12	.08 - 3.0	.23	5.8	.28	7.2	1000
HLCC-2BK	.27	6.9	.39	9.9	.26 - .28	6.5 - 7.0	.03 - .12	.08 - 3.0	.33	8.3	.39	10.0	1000

KKR
Adhesive Mount Clamp

Specifications:

- Material: UL94 V-0 PVC
- Color: Grey



Item No.	A Bundle Ø		B		C		Max Capacity D		Bulk Pack Qty.
	In	mm	In	mm	In	mm	In	mm	
KKR-5A1-RT	0.521	13.2	0.750	19.1	0.750	19.1	0.680	17.3	500



CABLE CLAMPS

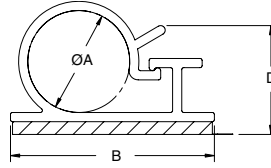
KKL Adhesive Mount Locking Clamp

Specifications:

- Material: UL94 V-0 PVC
- Color: Grey

Features:

- Gathers, routes, and locks cables & wires
- Can be opened and closed multiple times for addition or removal of cables



Item No.	Holding Capacity A		B		Depth		D		Bulk Pack Qty.
	In	mm	In	mm	In	mm	In	mm	
KKL-4-RT	0.250	6.4	0.750	19.1	0.750	19.1	0.375	9.5	500
KKL-8-RT	0.500	12.7	1.000	25.4	1.000	25.4	0.844	21.4	100
KKL-12-RT	0.750	19.1	1.000	25.4	1.000	25.4	1.000	25.4	100

KKD / KKDL Adhesive Mount Clamp

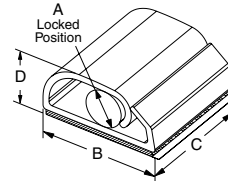
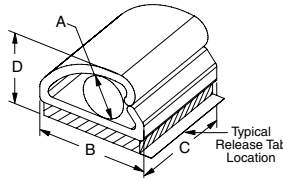


Figure 1

Figure 2

Specifications:

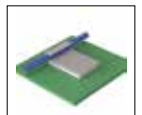
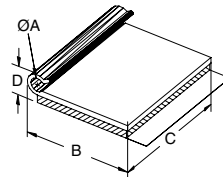
- Material: UL94 V-0 PVC
- Color: Grey

Features:

- To hold wires, cords or cables in place

Item No.	Figure	Holding Capacity A		B		C		D at Max Capacity Ref.		Bulk Pack Qty.
		In	mm	In	mm	In	mm	In	mm	
KKDL-4-RT	2	0.125	3.2	0.500	12.7	0.500	12.7	0.280	7.1	500
KKDL-8-RT	2	0.219	5.6	0.750	19.1	0.750	19.1	0.430	10.9	100
KKD-4-RT	1	0.250	6.4	0.500	12.7	0.500	12.7	0.400	10.2	500
KKD-8-RT	1	0.500	12.7	0.750	19.1	0.750	19.1	0.730	18.5	100
KKD-12-RT	1	0.750	19.1	1.125	28.6	1.000	25.4	1.020	25.9	100
KKD-16-RT	1	1.000	25.4	1.500	38.1	1.250	31.8	1.300	33.0	100

KKJ Adhesive Mount Clamp

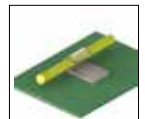
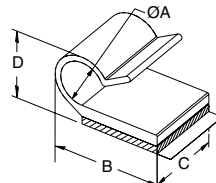


Specifications:

- Material: UL94 V-0 PVC
- Color: Grey

Item No.	A Bundle Ø		B		C		D at Max Capacity Ref.		Bulk Pack Qty.
	In	mm	In	mm	In	mm	In	mm	
KKJ-2-RT	1/8	3.2	27/32	21.4	1	25.4	1/4	6.4	1000
KKJ-3-RT	3/16	4.8	7/8	22.2	1-1/4	31.8	5/16	7.9	1000
KKJ-4-RT	1/4	6.4	29/32	23.0	1-1/2	38.1	13/32	10.3	1000
KKJ-5-RT	5/16	7.9	1-7/32	31.0	1-3/4	44.5	7/16	11.1	1000
KKJ-6-RT	3/8	9.5	1-9/32	32.5	2	50.8	17/32	13.5	1000

MKKJ Mini Adhesive Mount Clamp



Specifications:

- Material: UL94 V-0 PVC
- Color: Clear

Features:

- Clear color hides clamp

Item No.	Holding Capacity A		B		C		D		Bulk Pack Qty.
	In	mm	In	mm	In	mm	In	mm	
MKKJ-2-RT	0.125	3.2	0.437	11.1	0.375	9.5	0.234	6.0	1000
MKKJ-3-RT	0.187	4.8	0.625	15.9	0.437	11.1	0.328	8.3	1000
MKKJ-4-RT	0.250	6.4	0.656	16.7	0.500	12.7	0.406	10.3	1000
MKKJ-5-RT	0.312	7.9	0.812	20.6	0.562	14.3	0.484	12.3	1000
MKKJ-6-RT	0.375	9.5	0.875	22.2	0.625	15.9	0.562	14.3	1000

FREE SAMPLES
ON THOUSANDS OF FIBER, WIRE & CABLE MANAGEMENT PRODUCTS

order samples online at
www.essentracomponents.com



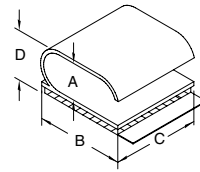
KKF Adhesive Mount Clamp

Specifications:

- Material: UL94 V-0 PVC
- Color: Grey

Features:

- Can hold 3 wire leads, such as air conditioning leads



Item No.	Holding Capacity A		B		C		Max Capacity D		Bulk Pack Qty.		
	In	mm	In	mm	In	mm	In	mm			
KKF-10X4-RT	0.562	14.3	0.230	5.2	0.750	19.1	0.750	19.1	0.359	9.1	100

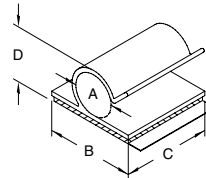
KKC Adhesive Mount Clamp

Specifications:

- Material: UL94 V-0 PVC
- Color: Grey

Features:

- For clamping cable or tubing securely



Item No.	Holding Capacity A		B		C		D		Bulk Pack Qty.
	In	mm	In	mm	In	mm	In	mm	
KKC-2-RT	0.125	3.2	0.750	19.1	0.750	19.1	0.310	7.9	500
KKC-3-RT	0.187	4.8	0.750	19.1	0.750	19.1	0.330	8.4	500
KKC-4-RT	0.250	6.4	0.750	19.1	0.750	19.1	0.420	10.7	500
KKC-5-RT	0.312	7.9	0.750	19.1	0.750	19.1	0.480	12.2	500
KKC-6-RT	0.375	9.5	0.750	19.1	0.750	19.1	0.600	15.2	500
KKC-8-RT	0.500	12.7	1.000	25.4	1.000	25.4	0.690	17.5	100
KKC-12-RT	0.750	19.1	1.000	25.4	1.000	25.4	0.940	23.9	100

UC / HUC Adhesive Mount U Clamp

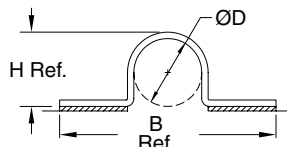


Figure 1

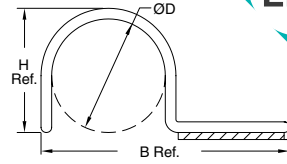


Figure 2



Specifications:

- Material: UL94 V-0 PVC
- Color: Black

Item No.	Figure	D Holding Capacity		B Ref.		H Ref.		Depth		Bulk Pack Qty.
		In	mm	In	mm	In	mm	In	mm	
UC-2-RT	1	0.125	3.2	1.219	30.9	0.172	4.4	0.625	15.9	1000
HUC-2-RT	2	0.125	3.2	0.718	18.3	0.172	4.4	0.625	15.9	1000
UC-4-RT	1	0.250	6.4	1.344	34.1	0.297	7.5	0.625	15.9	1000
HUC-4-RT	2	0.250	6.4	1.343	34.1	0.297	7.5	0.625	15.9	1000
UC-6-RT	1	0.375	9.5	1.469	37.3	0.422	10.7	0.625	15.9	1000
UC-8-RT	1	0.500	12.7	1.594	40.4	0.547	13.9	0.625	15.9	1000

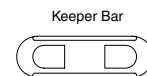
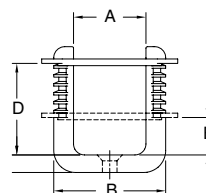
D Two-Piece Locking Clamp

Specifications:

- Material: UL94 V-2 Nylon 6/6
- Color: Natural

Features:

- Mounts with a #8 or M4 flat-head machine screw
- Adjustable holding capacity
- Keeper bar is removable for changes or repairs

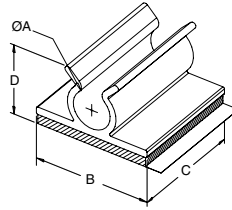


Item No.	A Ref.		B Ref.		D Ref.		E Ref.		Bulk Pack Qty.
	In	mm	In	mm	In	mm	In	mm	
D-1	0.990	25.1	1.530	38.9	1.250	31.8	0.500	12.7	100
D-1.5	1.457	37.0	2.175	55.3	1.650	41.9	0.660	16.8	100



CABLE CLIPS & CLAMPS

**KKU
Adhesive Mount Clamp**



Specifications:

- Material: UL94 V-0 PVC
- Color: Grey

Features:

- To hold wires, cords, or cables in place

Item No.	Holding Capacity A		B		C		D Ref.		Bulk Pack Qty.
	In	mm	In	mm	In	mm	In	mm	
KKU-2-RT	0.125	3.2	0.750	19.1	0.750	19.1	0.281	7.1	500
KKU-4-RT	0.250	6.4	0.750	19.1	0.750	19.1	0.468	11.9	500
KKU-6-RT	0.375	9.5	0.750	19.1	0.750	19.1	0.593	15.1	500
KKU-8-RT	0.500	12.7	1.000	25.4	1.000	25.4	0.687	17.5	100
KKU-9-RT	0.562	14.3	1.000	25.4	1.000	25.4	0.750	19.1	100
KKU-12-RT	0.750	19.1	1.000	25.4	1.000	25.4	0.906	23.0	100

**HURC / DHURC / HURCBH / HURCS / DHURCS
U Clamp**

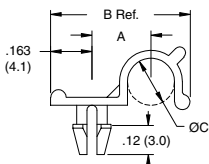


Figure 1

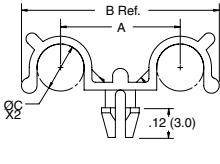


Figure 2

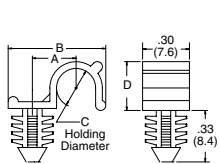


Figure 3

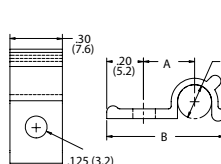


Figure 4

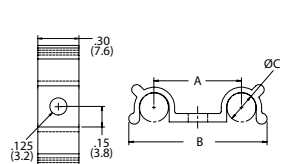


Figure 5



Specifications:

- Material: UL94 V-2 Nylon 6/6
- Color: Natural

Features:

- For clamping cable or tubing securely

Item No.	Figure	Holding Ø C		Mounting Hole Ø		Approval	A		B Ref.		Panel Thickness		Bulk Pack Qty.
		In	mm	In	mm		In	mm	In	mm	In	mm	
HURC-2-01	1	0.125	3.2	0.125	3.2	NA	0.200	5.1	0.490	12.4	0.062	1.6	1000
HURC-3-01	1	0.187	4.8	0.125	3.2	NA	0.240	6.1	0.560	14.2	0.062	1.6	1000
HURC-4-01	1	0.250	6.4	0.125	3.2	NA	0.270	6.9	0.620	15.7	0.062	1.6	1000
HURC1-2-01	1	0.125	3.2	0.125	3.2	NA	0.200	5.1	0.490	12.4	0.093	2.4	1000
HURC1-3-01	1	0.187	4.8	0.125	3.2	NA	0.240	6.1	0.560	14.2	0.093	2.4	1000
HURC1-4-01	1	0.250	6.4	0.125	3.2	NA	0.270	6.9	0.620	15.7	0.093	2.4	1000
DHURC-2-01	2	0.125	3.2	0.125	3.2	NA	0.410	10.4	0.660	16.8	0.062	1.6	1000
DHURC-3-01	2	0.187	4.8	0.125	3.2	NA	0.480	12.2	0.790	20.1	0.062	1.6	1000
DHURC-4-01	2	0.250	6.4	0.125	3.2	NA	0.550	14.0	0.940	23.9	0.062	1.6	1000
HURCS-2-01	4	0.125	3.2	0.125	3.2	—	0.250	6.2	0.590	15.0	—	—	1000
HURCS-3-01	4	0.187	4.8	0.125	3.2	—	0.280	7.1	0.650	15.6	—	—	1000
HURCS-4-01	4	0.250	6.4	0.125	3.2	—	0.320	8.1	0.720	18.3	—	—	1000
DHURCS-2-01	5	0.125	3.2	0.125	3.2	—	0.490	12.4	0.750	19.0	—	—	1000
DHURCS-3-01	5	0.187	4.8	0.125	3.2	—	0.560	14.2	0.890	22.6	—	—	1000
DHURCS-4-01	5	0.250	6.4	0.125	3.2	—	0.640	16.2	1.020	25.9	—	—	1000
HURCBH-2-01	3	0.125	3.2	0.250	6.4	—	0.490	12.4	0.170	4.3	0.250	6.4	1000
HURCBH-3-01	3	0.187	4.8	0.250	6.4	—	0.560	14.2	0.240	6.1	0.250	6.4	1000
HURCBH-4-01	3	0.250	6.4	0.250	6.4	—	0.620	15.7	0.300	7.6	0.250	6.4	1000

**SRC
Split Routing Clamp**

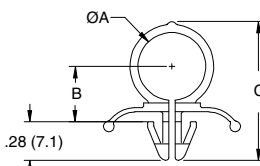


Figure 1

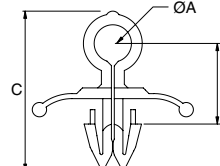


Figure 2



Specifications:

- Material: UL94 V-2 Nylon 6/6
- Color: Natural
- Mounting Hole .250 (6.4)

Features:

- Gathers and routes cables and wires
- Push mount design allows for fast installation

Item No.	Approval	Figure	A		B		C Ref.	Panel Thickness		Bulk Pack Qty.	
			In	mm	In	mm		In	mm		
SRC-1-01		2	0.197	5.0	0.443	11.2	0.878	22.3	0.079 - 0.118	2.0 - 3.0	1000
SRC-4-01	NA	1	0.250	6.4	0.260	6.6	0.750	19.1	0.050 - 0.060	1.3 - 1.5	1000
SRC-7-01	NA	1	0.437	11.1	0.390	9.8	0.970	24.7	0.050 - 0.060	1.3 - 1.5	1000
SRC-8-01	NA	1	0.500	12.7	0.430	10.8	1.040	26.5	0.050 - 0.060	1.3 - 1.5	1000
SRC-10-01	NA	1	0.625	15.9	0.500	12.7	1.180	29.9	0.050 - 0.060	1.3 - 1.5	1000

**SRCC
Strain Relief Clamp**



Specifications:

- Material: UL94 V-2 Nylon 6/6
- Color: See table

Features:

- Grips cable providing slight strain relief
- Securely installed with two screws

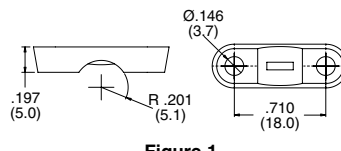


Figure 1

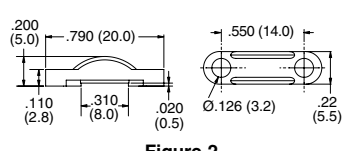
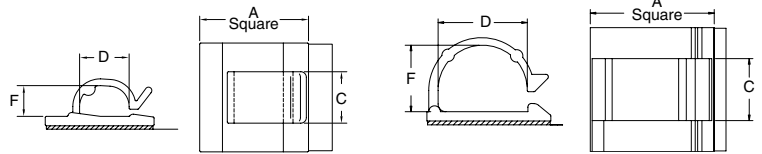


Figure 2

Item No.	Figure	Color	Max Cable Dia.	Mounting Screws	Bulk Pack Qty.
SRCC-1	1	Grey	0.177	M3 or #6	1000
SRCC-2	2	Black	0.310	M3 or #4	1000



**WCK / MWCK
Adhesive Mount Clips**



Specifications:

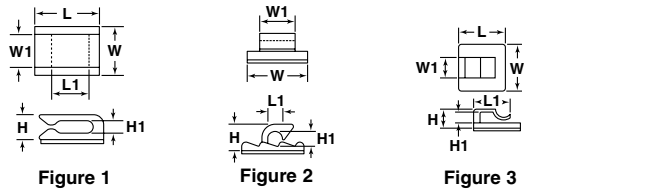
- Material: UL94 V-2 Nylon 6/6
- Color: Natural

Features:

- To hold wires, cords, or cables in place

Item No.	Figure	Approval	A		C		D		F		Bulk Pack Qty.
			In	mm	In	mm	In	mm	In	mm	
WCK-180-01A-RT	1		0.630	16.0	0.310	7.9	0.340	8.6	0.160	7.0	1000
WCK-280-01A4-RT	1	—	0.750	19.0	0.390	10.0	0.260	6.5	0.220	8.8	1000
WCK-460-01A-RT	1		0.990	25.1	0.470	11.9	0.450	11.4	0.280	11.7	1000
MWCK-460-01A4-RT	2	—	0.750	19.0	0.470	11.9	0.450	11.4	0.280	11.6	1000
WCK-720-01A-RT	2	—	1.000	25.4	0.470	11.9	0.720	18.3	0.540	17.9	1000

**WCA
Adhesive Mount Clips**

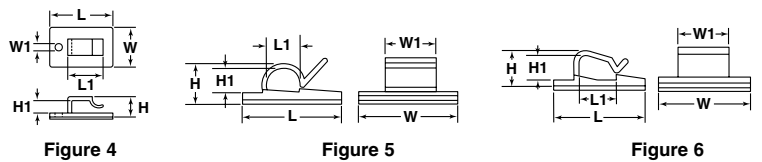


Specifications:

- Material: UL94 V-2 Nylon 6/6
- Color: Natural

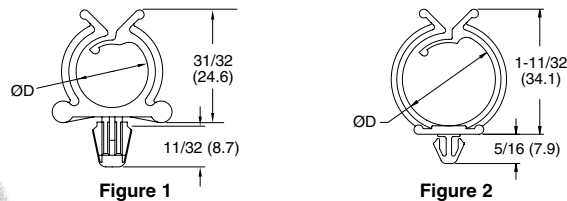
Features:

- Self-adhesive wire clip is designed to support lightweight wire bundles when properly applied on any clean, smooth, grease-free surface



Item No.	Figure	L		L1		W		W1		H		H1		Bulk Pack Qty.
		In	mm	In	mm	In	mm	In	mm	In	mm	In	mm	
WCA001A	1	0.510	13.00	0.354	9.00	0.370	9.50	0.260	6.50	0.200	5.20	0.110	2.80	100
WCA002A	2	0.630	16.00	0.190	4.80	0.610	15.50	0.354	9.00	0.270	6.80	0.190	4.80	100
WCA003A	3	0.630	16.00	0.490	12.50	0.630	16.00	0.354	9.00	0.340	8.70	0.150	3.70	100
WCA004A	4	1.060	27.00	0.580	14.80	0.670	17.00	0.120	3.10	0.340	8.70	0.220	5.50	100
WCA005A	5	0.750	19.00	0.230	5.90	0.750	19.00	0.394	10.00	0.280	7.20	0.190	4.90	100
WCA006A	1	0.630	16.00	0.470	11.90	0.620	15.80	0.354	9.00	0.354	9.00	0.230	5.80	100
WCA007A	6	1.060	26.80	0.470	11.90	1.040	26.50	0.480	12.30	0.460	11.70	0.330	8.30	100

**RWS / RWSB
Round Clamp**



Specifications:

- Material: Nylon 6/6
- Color: Natural

Features:

- Gathers and routes cables & wires
- Push mount design allows for fast installation
- Adhesive base makes installation quick & easy

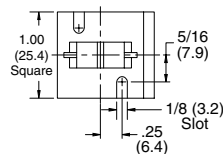


Figure 3



Item No.	UL94 V-2	UL94 V-0	Mounting Method	Approval	Figure	Mounting Hole		Panel Thickness		Holding Ø D		Depth		Bulk Pack Qty.	
						in	mm	in	mm	in	mm	In	mm		
RWS-10-01	RWS-10-19	—	Snap-In		1	Ø.250	6.4	.030 - .060	0.8 - 1.5	0.625	15.9	0.297	17.5	Natural	1000
RWS-10-01BK	—	—	Snap-In		1	Ø.250	6.4	.030 - .060	0.8 - 1.5	0.625	15.9	0.297	17.5	Black	1000
RWS-16-01	RWS-16-19	—	Snap-In		2	.250 Square	6.4	.058 - .064	1.5 - 1.6	1.000	25.4	0.297	17.5	Natural	1000
RWS-16-01BK	—	—	Snap-In		2	.250 Square	6.4	.058 - .064	1.5 - 1.6	1.000	25.4	0.297	17.5	Black	1000
RWSB-10-01A-RT	—	—	Adhesive	—	3	—	—	—	—	0.625	15.9	1.000	25.4	Natural	1000
RWSB-16-01A-RT	—	—	Adhesive	—	3	—	—	—	—	1.000	25.4	1.000	25.4	Natural	1000
RWSB-10-01	—	—	Screw	—	3	—	—	—	—	0.625	15.9	1.000	25.4	Natural	1000
RWSB-16-01	—	—	Screw	—	3	—	—	—	—	1.000	25.4	1.000	25.4	Natural	1000



FIBER, WIRE & CABLE MANAGEMENT

CABLE CLIPS & CLAMPS

CH / RSC Snap In Cable Hanger

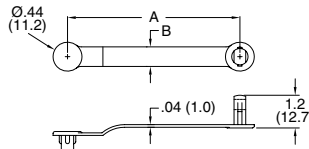


Figure 1

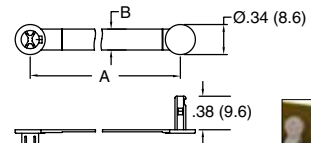


Figure 2



Specifications:

- Material: See table
- Color: See table

Features:

- Gathers and routes cables & wires
- Push mount design allows for fast installation

Item No.		A Ref.		B		Max Holding Ø		Material	Bulk Pack Qty.	
Natural	Black	In	mm	In	mm	In	mm			
CH-1-01	CH-1-01BK	1	1.750	44.5	0.297	7.5	0.375	9.5	UL94 V-2 Nylon 6/6	1000
CH-2-01	CH-2-01BK	1	2.625	66.7	0.297	7.5	0.625	15.9	UL94 V-2 Nylon 6/6	1000
CH-3-01	CH-3-01BK	1	3.750	95.3	0.297	7.5	1.000	25.4	UL94 V-2 Nylon 6/6	1000
CH-1-10	CH-1-10BK	1	1.750	44.5	0.297	7.5	0.375	9.5	UL94 HB Polypropylene	1000
CH-2-10	CH-2-10BK	1	2.625	66.7	0.297	7.5	0.625	15.9	UL94 HB Polypropylene	1000
CH-3-10	CH-3-10BK	1	3.750	95.3	0.297	7.5	1.000	25.4	UL94 HB Polypropylene	1000
—	RSC-3-01	2	1.100	28.0	0.160	4.0	0.218	5.6	UL94 V-2 Nylon 6/6	1000
—	RSC-4-01	2	1.300	33.0	0.240	6.0	0.250	6.4	UL94 V-2 Nylon 6/6	1000
—	RSC-6-01	2	1.690	43.0	0.240	6.0	0.375	9.5	UL94 V-2 Nylon 6/6	1000
—	RSC-9-01	2	2.480	63.0	0.240	6.0	0.625	15.9	UL94 V-2 Nylon 6/6	1000

V Screw Mount Component Clip

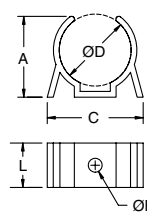
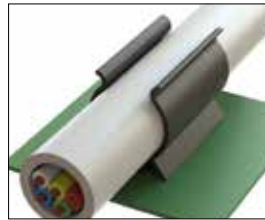


Figure 1

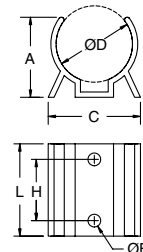


Figure 2

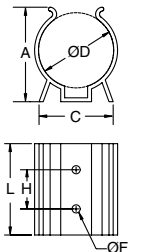


Figure 3

Specifications:

- Material: UL94 V-0 PVC Color: Black

Features:

- Legs prevent shifting and tipping
- Mounts securely with screws or rivets
- Holds parts firmly

Item No.	D Holding Ø		F Hole Ø Ref.		A Ref.		C Ref.		H Ref.		L		Figure	Bulk Pack Qty.
	In	mm	In	mm	In	mm	In	mm	In	mm	In	mm		
V-1000	0.25	6.4	.094	2.4	0.30	7.5	0.50	12.7	Single Hole In Center		0.50	12.7	1	1000
V-1001	0.31	7.9	.094	2.4	0.36	9.1	0.50	12.7	Single Hole In Center		0.50	12.7	1	1000
V-1002	0.38	9.5	.094	2.4	0.41	10.3	0.50	12.7	Single Hole In Center		0.50	12.7	1	1000
V-1003	0.44	11.1	.094	2.4	0.45	11.5	0.52	13.1	Single Hole In Center		0.50	12.7	1	1000
V-1004	0.50	12.7	.094	2.4	0.50	12.7	0.66	16.7	Single Hole In Center		0.50	12.7	1	1000
V-1005	0.56	14.3	.094	2.4	0.61	15.5	0.72	18.3	Single Hole In Center		0.50	12.7	1	1000
V-1006	0.63	15.9	.094	2.4	0.63	15.9	0.83	21.0	Single Hole In Center		0.50	12.7	1	1000
V-1007	0.69	17.6	.156	4.0	0.63	15.9	0.84	21.0	Single Hole In Center		0.50	12.7	1	1000
V-1008	0.75	19.7	.156	4.0	0.78	19.8	0.89	22.6	Single Hole In Center		0.50	12.7	1	100
V-1009	0.88	22.2	.156	4.0	0.91	23.0	1.08	27.4	Single Hole In Center		0.50	12.7	1	100
V-1010	1.00	25.4	.156	4.0	0.98	25.0	1.13	28.6	.75	19.1	1.13	28.5	2	100
V-1011	1.38	34.9	.156	4.0	1.34	34.1	1.25	31.8	.75	19.1	1.13	28.5	2	100
V-1024	1.50	38.1	.156	4.0	1.81	46.0	1.42	36.1	.75	19.1	1.75	44.5	3	100
V-1028	1.75	44.5	.156	4.0	1.92	48.8	1.50	38.1	.75	19.1	1.75	44.5	3	100
V-1030	2.25 - 2.75	57.1 - 69.9	.156	4.0	2.44	61.9	2.61	66.3	.75	19.1	1.50	38.1	3	100

VM Screw Mount Component Clip

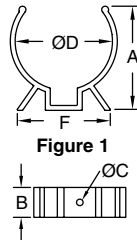


Figure 1

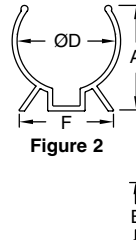


Figure 2

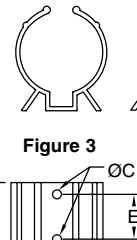


Figure 3

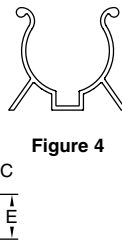


Figure 4

Specifications:

- Material: UL94 V-2 Nylon 6/6
- Color: Black

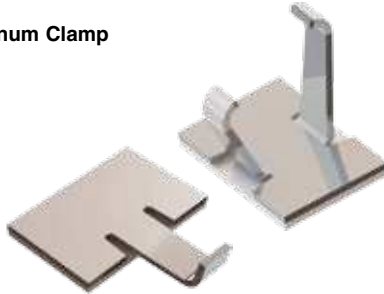
Features:

- Smooth edges protect components from wear and abrasion
- Legs prevent shifting and tipping
- Mounts securely with screws or rivets

Item No.	D Holding Ø		C Hole Ø		A Ref.		B		E		F Ref.		Figure	Bulk Pack Qty.
	In	mm	In	mm	In	mm	In	mm	In	mm	In	mm		
VM-1002	3/8	9.5	0.11	2.8	0.44	11.2	0.50	12.7	Single Hole in Center		0.54	13.7	1	100
VM-1004	1/2	12.7	0.11	2.8	0.52	13.2	0.50	12.7	Single Hole in Center		0.75	19.1	1	100
VM-1007	11/16	17.5	0.15	3.8	0.78	19.8	0.50	12.7	Single Hole in Center		0.82	20.8	1	100
VM-1008	3/4	19.1	0.15	3.8	0.97	24.6	0.50	12.7	Single Hole in Center		0.98	24.9	1	100
VM-1010	1	25.4	0.15	3.8	1.03	26.1	1.12	28.4	.750	19.1	1.25	31.8	2	100
VM-1011	1-3/8	34.9	0.15	3.8	1.51	38.4	1.16	29.5	.750	19.1	1.37	34.8	2	100
VM-1024	1-1/2	38.1	0.15	3.8	1.67	42.4	1.70	43.2	.750	19.1	1.50	38.1	3	100
VM-1030	2-1/4	57.2	0.15	3.8	2.50	63.5	1.52	38.6	.750	19.1	3.00	76.2	4	100



ASK / RAK
Adhesive Mount Aluminum Clamp



Specifications:

- Material: Aluminum, Bright Finish

Features:

- Aluminum arms are flexed around bundle
- Lightweight and durable
- Adhesive mount for quick installation

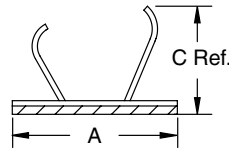


Figure 1

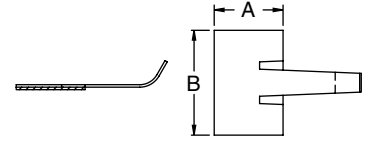


Figure 2

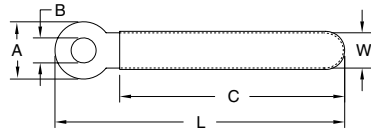
Item No.	Figure	A		B Base Depth		Max Bundle Ø		Bulk Pack Qty.
		In	mm	In	mm	In	mm	
ASK-3	1	0.440	11.3	0.660	16.8	0.234	6.0	250
ASK-6	1	0.620	15.7	0.740	18.8	0.375	9.5	250
RAK-1	2	0.440	11.3	0.670	17.1	0.234	6.0	250
RAK-2	2	0.640	16.3	0.760	19.3	0.375	9.5	250

VCC
Vinyl Coated Adjustable Steel Clamp



Specifications:

- Material: PVC Coated Soft Steel
- Color: Body - Steel Coating - Black



Features:

- For bundling and clamping cable or tubing securely
- Vinyl coating grips and insulates the cable
- Easily bends and forms to desired shape for varying holding diameters

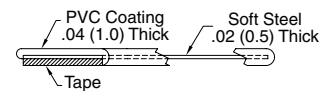
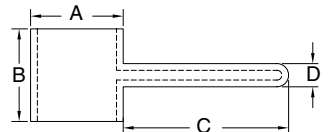
Item No.	Bundle Ø		C Ref.		L Ref.		W Ref.		A		B Ø		Pack Qty.	Bulk Pack Qty.
	In	mm	In	mm	In	mm	In	mm	In	mm	In	mm		
VCC-83028	0.220	5.7	0.710	18.0	1.100	28.0	0.120	3.0	0.315	8.0	0.118	3.0	1	1000
VCC-83535	0.310	7.9	0.980	25.0	1.340	35.0	0.200	5.0	0.315	8.0	0.138	3.5	1	1000
VCC-83540	0.370	9.5	1.180	30.0	1.570	40.0	0.120	3.0	0.315	8.0	0.138	3.5	1	1000
VCC-63048	0.500	12.7	1.570	40.0	1.890	48.0	0.080	2.0	0.236	6.0	0.118	3.0	1	1000
VCC-84554	0.520	13.3	1.650	42.0	2.130	54.0	0.190	4.8	0.315	8.0	0.177	4.5	1	1000
VCC-63254	0.570	14.6	1.810	46.0	2.130	54.0	0.140	3.6	0.236	6.0	0.126	3.2	1	1000
VCC-83664	0.660	16.9	2.090	53.0	2.520	64.0	0.200	5.0	0.315	8.0	0.161	4.1	1	1000
VCC-84576	0.810	20.7	2.560	65.0	2.990	76.0	0.180	4.5	0.315	8.0	0.177	4.5	1	1000
VCC-84584	0.900	22.9	2.830	72.0	3.310	84.0	0.180	4.5	0.315	8.0	0.177	4.5	1	1000
VCC-845126	1.400	35.6	4.410	112.0	4.960	126.0	0.240	6.0	0.315	8.0	0.177	4.5	1	100

PCC
Adhesive Mount Vinyl Coated Adjustable Steel Clamp



Specifications:

- Material: Soft Steel with PVC Coating
- Color: White



Features:

- Protects and insulates wires or components
- Flexible arm holds flat, round, or oddly shaped components
- Arm may be opened or closed repeatedly and reshaped for varying holding diameters

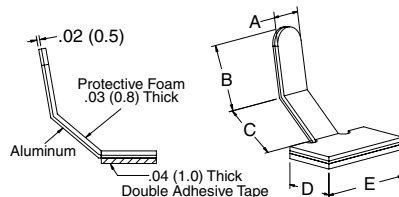
Item No.	A Ref.		B		C Ref.		D Ref.		Bulk Pack Qty.
	In	mm	In	mm	In	mm	In	mm	
PCC-5	0.310	8.0	0.310	8.0	0.590	15.0	0.080	2.1	1000
PCC-9	0.550	14.0	0.550	14.0	0.980	25.0	0.140	3.5	500
PCC-12	0.750	19.0	0.750	19.0	1.580	40.0	0.160	4.0	500

PFC
Adhesive Mount Foam Coated Adjustable Steel Clamp



Specifications:

- Material: Foam Coated Aluminum
- Color: Grey Coated



Features:

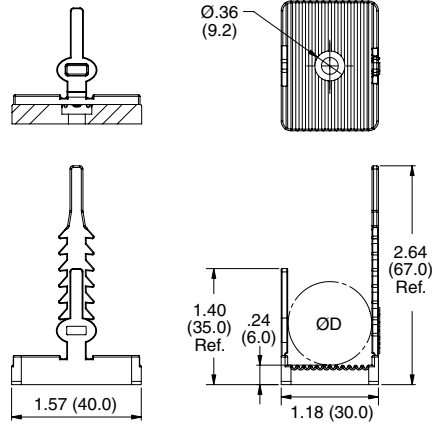
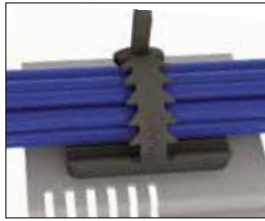
- Made of aluminum with a protective foam coating on the inside of the clamp that protects cables and fibers
- Flexible arm holds flat, round or oddly shaped components
- Arm may be opened or closed repeatedly and reshaped for varying holding diameters

Item No.	A Ref.		B Ref.		C Ref.		D		E		Bulk Pack Qty.
	In	mm	In	mm	In	mm	In	mm	In	mm	
PFC-25M	0.189	4.8	0.494	12.6	0.437	11.1	0.380	9.7	0.750	19.1	1000
PFC-50M	0.205	5.2	0.573	14.6	0.55	14.1	0.550	14.1	0.980	25.0	1000



FIBER, WIRE & CABLE MANAGEMENT
CABLE CLIPS & CLAMPS

UMB
Universal Rubber Clamp



Specifications:

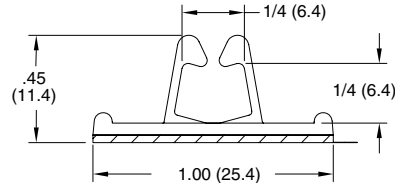
- Material: Neoprene Rubber, 50 Shore A
- Color: Black

Features:

- Flexible, serrated buckle style clamp provides a tight grip to the bundle
- Large, ribbed base gives the cables extra surface area which provides some strain relief
- Two mounting styles available: #10 screw or adhesive

Item No.	Mounting Method	D Approx. Max Cable Bundle Ø		Pack Qty.	Bulk Pack Qty.
		In	mm		
UMB-1	#10 or M5 Screw	.79	20.0	1	200
UMB-1A-RT	Adhesive	.79	20.0	1	200

WCB
Cord Clip on Adhesive Base



Specifications:

- Material: UL94 V-2 Nylon 6/6
- Color: Natural

Features:

- Routes and fastens cords & cables
- Adhesive mount design for quick & easy installation

Item No.	Approval	Depth		Bulk Pack Qty.
		In	mm	
WCB-250-01A-RT		0.500	12.7	1000

SCCA / SCCB
Standoff Cable Clip

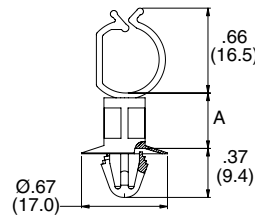


Figure 1

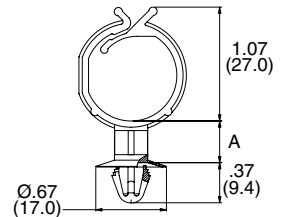


Figure 2

Specifications:

- Material: Nylon 6/6
- Color: Natural
- Mounting Hole: .256 - .276 (6.5 - 7.0)
- Panel Thickness: .024 - 0.079 (0.6 - 2.0)

Features:

- Gathers and routes wires
- Standoff design provides spacing between the wires and chassis

Item No.	UL94 V-2	UL94 V-0	Figure	A		Max Bundle Ø		Bulk Pack Qty.
				In	mm	In	mm	
SCCA-1-01	SCCA-1-19	1	0.160	4.0	0.870	22.0	1000	
SCCA-2-01	SCCA-2-19	1	0.240	6.0	0.870	22.0	1000	
SCCA-3-01	SCCA-3-19	1	0.320	8.0	0.870	22.0	1000	
SCCA-4-01	SCCA-4-19	1	0.390	10.0	0.870	22.0	1000	
SCCA-5-01	SCCA-5-19	1	0.470	12.0	0.870	22.0	1000	
SCCB-1-01	SCCB-1-19	2	0.160	4.0	0.430	11.0	1000	
SCCB-2-01	SCCB-2-19	2	0.240	6.0	0.430	11.0	1000	
SCCB-3-01	SCCB-3-19	2	0.320	8.0	0.430	11.0	1000	
SCCB-4-01	SCCB-4-19	2	0.390	10.0	0.430	11.0	1000	
SCCB-5-01	SCCB-5-19	2	0.470	12.0	0.430	11.0	1000	
SCCB-6-01	SCCB-6-19	2	1.180	30.0	0.430	11.0	1000	



**SLCS / SLCSE
Standoff Locking Clip**

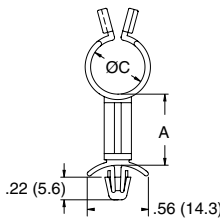


Figure 1

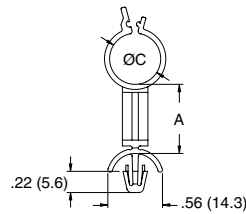


Figure 2



Specifications:

- Material: UL94 V-2 Nylon 6/6
- Color: Natural
- Mounting Hole: .187 (4.8)
- SLCS/SLCSE Panel Thickness: .031 - .078 (0.8 - 2.0)
- SLCSE2 Panel Thickness: .078 - .160 (2.0 - 4.0)

Features:

- Gathers and routes wires
- Easy locking design makes it easy to open & close with very little effort
- Standoff design provides spacing between the wires and the chassis

Item No.	Approval	Figure	A		C Max Bundle Ø		Bulk Pack Qty.
			In	mm	In	mm	
SLCS-250-3-01		1	0.187	4.8	0.187	4.8	1000
SLCS-250-4-01		1	0.250	6.4	0.187	4.8	1000
SLCS-250-6-01		1	0.375	9.5	0.187	4.8	1000
SLCS-250-8-01		1	0.500	12.7	0.187	4.8	1000
SLCS-250-16-01		1	1.000	25.4	0.187	4.8	1000
SLCS-370-3-01		1	0.187	4.8	0.312	7.9	1000
SLCS-370-4-01		1	0.250	6.4	0.312	7.9	1000
SLCS-370-6-01		1	0.375	9.5	0.312	7.9	1000
SLCS-370-8-01		1	0.500	12.7	0.312	7.9	1000
SLCS-370-16-01		1	1.000	25.4	0.312	7.9	1000
SLCS-500-3-01		1	0.187	4.8	0.437	11.1	1000
SLCS-500-4-01		1	0.250	6.4	0.437	11.1	1000
SLCS-500-6-01		1	0.375	9.5	0.437	11.1	1000
SLCS-500-8-01		1	0.500	12.7	0.437	11.1	1000

Item No.	Approval	Figure	A		C Max Bundle Ø		Bulk Pack Qty.
			In	mm	In	mm	
SLCS-500-16-01		1	1.000	25.4	0.437	11.1	1000
SLCS-750-3-01		1	0.187	4.8	0.687	17.5	1000
SLCS-750-4-01		1	0.250	6.4	0.687	17.5	1000
SLCS-750-6-01		1	0.375	9.5	0.687	17.5	1000
SLCS-750-8-01		1	0.500	12.7	0.687	17.5	1000
SLCS-750-16-01		1	1.000	25.4	0.687	17.5	1000
SLCSE-250-3-01		2	0.187	4.8	0.220	5.6	1000
SLCSE-370-3-01		2	0.187	4.8	0.350	8.9	1000
SLCSE-500-3-01		2	0.187	4.8	0.470	12.0	1000
SLCSE-750-3-01		2	0.187	4.8	0.730	18.4	1000
SLCSE2-250-3-01		2	0.187	4.8	0.220	5.6	1000
SLCSE2-370-3-01		2	0.187	4.8	0.350	8.9	1000
SLCSE2-500-3-01		2	0.187	4.8	0.470	12.0	1000
SLCSE2-750-3-01		2	0.187	4.8	0.730	18.4	1000

**SHK / SHKE / SHKBS
Standoff Cable Clip**

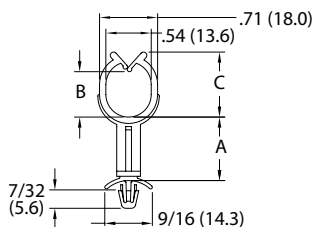


Figure 1

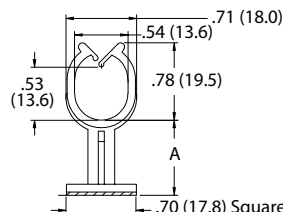


Figure 2

Specifications:

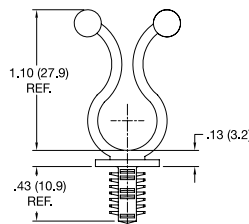
- Material: UL94 V-2 Nylon 6/6
- Color: Natural

Features:

- Gathers and routes wire harnesses
- Standoff design provides spacing between the wire harnesses and the chassis

Item No.	Approval	Figure	A		B Ref.		C Ref.		Mounting Hole Ø		Panel Thickness		Bulk Pack Qty.
			In	mm	In	mm	In	mm	In	mm	In	mm	
SHK-6-01		1	0.375	9.5	0.540	13.6	0.770	19.5	0.187	4.8	0.031 - 0.78	0.8 - 2.0	1000
SHK-8-01		1	0.500	12.7	0.540	13.6	0.770	19.5	0.187	4.8	0.031 - 0.78	0.8 - 2.0	1000
SHKE-6-01		1	0.375	9.5	0.810	20.6	1.140	29.0	0.187	4.8	0.031 - 0.78	0.8 - 2.0	1000
SHKE-8-01		1	0.500	12.7	0.810	20.6	1.140	29.0	0.187	4.8	0.031 - 0.78	0.8 - 2.0	1000
SHKBS-4-01A-RT		2	0.250	6.4	See Figure 2				Not Applicable				1000
SHKBS-8-01A-RT		2	0.500	12.7	See Figure 2				Not Applicable				1000

**STL-8
Standoff Twist Lock**



Specifications:

- Material: UL94 V-2 Nylon 6/6
- Color: Natural

Features:

- Lifts wires off board to isolate from other board components
- Cable and wire bundles load and unload with a fingertip twist

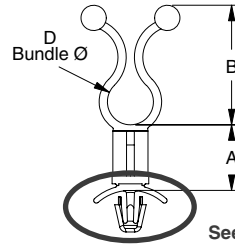
Item No.	Bundle Ø		Hole Ø		Min Board Thickness		Bulk Pack Qty.
	In	mm	In	mm	In	mm	
STL-8-450-2-01	0.400 - 0.500	10.2 - 12.7	0.250	6.4	0.250	7.2	1000





TWIST TIES

STL
Standoff Twist Lock



Hole Ø: .187 (4.75)
Panel Thickness:
.031-.078 (0.8-2)

See Individual Styles for Mounting Details

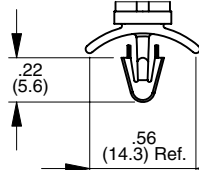
STL Basic Style

Specifications:

- Material: UL94 V-2 Nylon 6/6
- Color: Natural

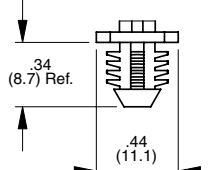
Features:

- Lifts wires off board to isolate from other board components
- Cable and wire bundles load and unload with a fingertip twist
- Four mounting styles



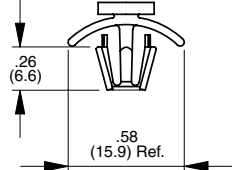
Hole Ø: .156 (4)
Panel Thickness:
.031-.078 (0.8-2)

STL-1



Hole Ø: .312 (7.9)
Panel Thickness:
.250 (7.9) Minimum

STL-3

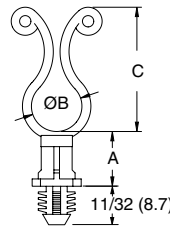


Hole Ø: .236 (6)
Panel Thickness:
.031-.078 (0.8-2)

STL-6

Item No.	Approval	D Bundle Ø		A Spacer Length		B Ref.		Bulk Pack Qty.		
		In	mm	In	mm	In	mm			
STL-250-3-01	UL	.200	.300	5.1	7.6	0.187	4.8	0.750	19.1	1000
STL-250-8-01	UL	.200	.300	5.1	7.6	0.500	12.7	0.750	19.1	1000
STL-350-3-01	UL	.300	.400	7.6	10.2	0.187	4.8	0.910	23.1	1000
STL-350-8-01	UL	.300	.400	7.6	10.2	0.500	12.7	0.910	23.1	1000
STL-450-3-01	UL	.400	.500	10.2	12.7	0.187	4.8	1.090	27.7	1000
STL-450-8-01	UL	.400	.500	10.2	12.7	0.500	12.7	1.090	27.7	1000
STL-600-3-01	UL	.500	.600	12.7	15.2	0.187	4.8	1.280	32.5	1000
STL-600-8-01	UL	.500	.600	12.7	15.2	0.500	12.7	1.280	32.5	1000
STL-750-3-01	UL	.700	.800	17.8	20.3	0.187	4.8	1.450	36.8	1000
STL-750-8-01	UL	.700	.800	17.8	20.3	0.500	12.7	1.450	36.8	1000

BHKL
Fir-Tree Curly Lock



Specifications:

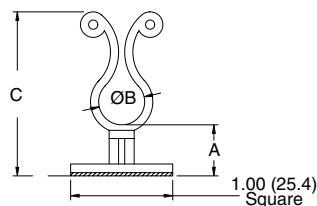
- Material: UL94 V-2 Nylon 6/6
- Color: Natural
- To press fit in a .312 (7.9) Ø hole in a .250 (6.4) minimum panel thickness

Features:

- Ends twist into place with very little effort
- Releasable and reusable for easy wire bundling
- Rounded edges prevent abrasion

Item No.	Approval	A		Bundle Ø B		C Ref.		Bulk Pack Qty.
		In	mm	In	mm	In	mm	
BHKL-350-4-01	UL	0.250	6.4	0.300 - 0.400	7.6 - 10.2	1.000	25.4	1000
BHKL-350-10-01	UL	0.625	15.9	0.300 - 0.400	7.6 - 10.2	1.000	25.4	1000
BHKL-450-4-01	UL	0.250	6.4	0.400 - 0.500	10.2 - 12.7	1.125	28.6	1000
BHKL-450-6-01	UL	0.375	9.5	0.400 - 0.500	10.2 - 12.7	1.125	28.6	1000
BHKL-750-4-01	UL	0.250	6.4	0.700 - 0.800	17.8 - 20.3	1.500	38.1	1000
BHKL-750-6-01	UL	0.375	9.5	0.700 - 0.800	17.8 - 20.3	1.500	38.1	1000

KLBS
Adhesive Mount Standoff Curly Lock



Specifications:

- Material: UL94 V-2 Nylon 6/6
- Color: Natural

Features:

- Ends twist into place with very little effort
- Releasable and reusable for easy wire bundling
- Rounded edges prevent abrasion

Item No.	Approval	A		Bundle Ø B		C Ref.		Bulk Pack Qty.
		In	mm	In	mm	In	mm	
KLBS-350-401A	UL	0.250	6.4	0.300 - 0.400	7.6 - 10.2	1.281	32.5	1000
KLBS-3508-01A	UL	0.500	12.7	0.300 - 0.400	7.6 - 10.2	1.531	38.9	1000
KLBS-35012-01A	UL	0.750	19.1	0.300 - 0.400	7.6 - 10.2	1.781	45.2	1000
KLBS-35016-01A	UL	1.000	25.4	0.300 - 0.400	7.6 - 10.2	2.031	51.6	1000



KLB
Adhesive Mount Curly Lock

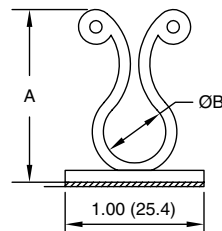


Specifications:

- Material: UL94 V-2 Nylon 6/6
- Color: Natural

Features:

- Cables are locked in place with a fingertip twist
- Cables are easily removable with another fingertip twist
- Quick mounting adhesive base does not require through-hole



Item No.	Approval	B Holding Ø		A Ref.		Base Depth		Bulk Pack Qty.
		In	mm	In	mm	In	mm	
KLB-350A-RT		.300 - .400	7.6 - 10.2	1.070	27.2	0.510	13.0	1000
KLB-450A-RT		.400 - .500	10.2 - 12.7	1.230	31.2	0.510	13.0	1000
KLB-750A-RT		.700 - .800	17.8 - 20.3	1.580	40.1	0.510	13.0	1000

TLFB
Twist Lock on Flexible Adhesive Base

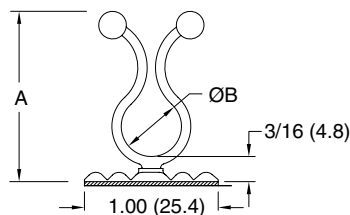


Specifications:

- Material: UL94 V-2 Nylon 6/6
- Color: Natural

Features:

- Flexible adhesive base can be mounted onto contoured surfaces
- Cables are locked into place with a fingertip twist



Item No.	Approval	Bundle Ø B		A Ref.		Base Depth		Bulk Pack Qty.
		In	mm	In	mm	In	mm	
TLFB-350-01A1		0.300 - 0.400	0.08 - 10.2	1.150	29.3	0.500	12.7	1000
TLFB-450-01A1		0.400 - 0.500	10.2 - 12.7	1.270	32.3	0.500	12.7	1000
TLFB-750-01A1		0.700 - 0.800	17.8 - 20.3	1.610	40.9	0.500	12.7	1000

TLJ Series
Snap In Twist Lock

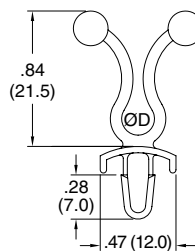


Specifications:

- Material: UL94 V-2 Nylon 6/6
- Color: Natural

Features:

- Ends twist into place with very little effort
- Releasable and reusable for easy wire bundling



Item No.	Approval	Mounting Hole Ø		Bundle Ø D		Panel Thickness		Bulk Pack Qty.
		In	mm	In	mm	In	mm	
TLJ-200-01		0.187	4.8	0.500-0.600	12.7-15.2	0.031 - 0.078	0.8 - 2.0	1000

SKL / SKLO
Side Entry and 45° Curly Lock



Specifications:

- Material: UL94 V-2 Nylon 6/6
- Color: Natural
- Mounting Hole: .187 (4.8)
- Panel Thickness: .031 - .078 (0.8 - 2.0)

Features:

- Gathers and routes wires
- Ends twist into place with very little effort
- Releasable & reusable for easy wire bundling
- Eases installation in hard to reach places

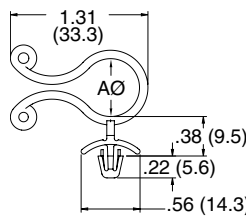


Figure 1

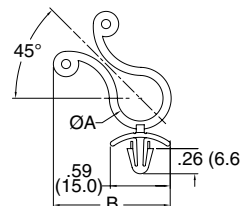


Figure 2

Item No.	Approval	Figure	Bundle Ø A		B Ref.		Bulk Pack Qty.
			In	mm	In	mm	
SKLO-550-01		1	0.500 - 0.600	12.7 - 15.2	See Figure 1		1000
SKL45-250		2	0.150 - 0.250	3.8 - 6.35	0.980	24.9	1000
SKL45-350		2	0.300 - 0.400	7.6 - 10.0	1.070	27.2	1000
SKL45-450		2	0.400 - 0.470	10.0 - 12.0	1.120	28.4	1000



TWIST TIES

KLH / TLH / TLHE
Screw Mount Hinged Twist Lock



Specifications:

- Material: UL94 V-2 Nylon 6/6
- Color: Natural

Features:

- Ends twist into place with very little effort
- Releasable and reusable for easy wire bundling
- Hinged design makes it easier to adjust your wire angles as needed for the application
- Screw mount design for easy and fast assembly

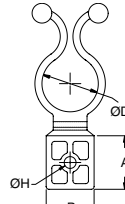


Figure 1

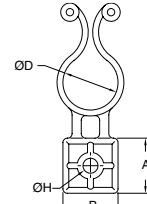


Figure 2



Item No.	Approval	Holding Ø D		H		Recommended Screw Size	A		B		Figure	Bulk Pack Qty.
		In	mm	In	mm		In	mm	In	mm		
TLH-800-01		0.750 - 0.850	19.0 - 21.6	0.160	4.1	#6 or M3	0.750	19.0	0.670	17.0	1	1000
TLH-500-01	—	0.450 - 0.550	11.4 - 14.0	0.170	4.2	#8 or M4	0.560	14.2	0.550	14.0	1	1000
TLHE-1-750-01	—	0.700 - 0.800	17.8 - 20.3	0.204	5.2	#10 or M5	0.750	19.0	0.670	17.0	1	1000
KLH-750-01		0.700 - 0.800	17.8 - 20.3	0.204	5.2	#10 or M5	0.750	19.0	0.750	19.0	2	1000

WTLH
Webbed Hinged Twist Lock

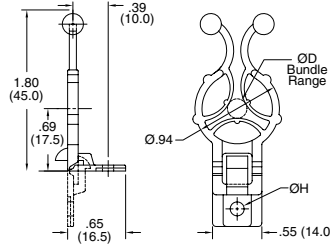


Specifications:

- Material: UL94 V-2 Nylon 6/6
- Color: Natural

Features:

- Once clamp is hinged, it locks into position
- Webbed design provides a positive lock



Item No.	Hole Ø H		Bundle Ø D		Recommended Screw Size	Bulk Pack Qty.
	In	mm	In	mm		
WTLH90-300-4-01	0.130	3.3	0.140 - 0.480	3.6 - 12.2	#4 or M3	500
WTLH90-300-6-01	0.150	3.8	0.140 - 0.480	3.6 - 12.2	#6 or M3.5	500
WTLH90300-M4-01	0.170	4.3	0.140 - 0.480	3.6 - 12.2	#8 or M4	500

TLHS
Webbed Hinged Twist Lock

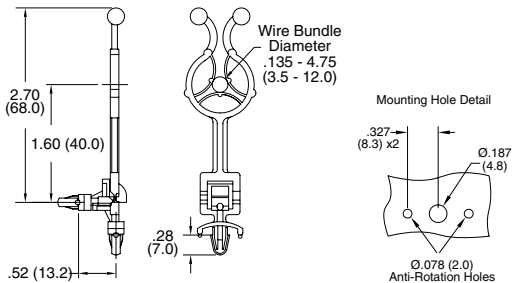


Specifications:

- Material: UL94 V-2 Nylon 6/6
- Color: Natural
- Panel Thickness: .078 (2.0)

Features:

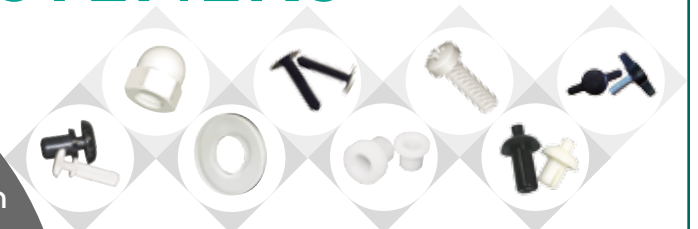
- Hinged design eases installation for hard to reach places
- Tensioning device surrounding wire bundles allows for a positive lock
- Once the base is installed in the panel, the spacer is hinged where it locks into place, routing at a 90° angle



Item No.	Approval	Bulk Pack Qty.
TLHS90-300-01		500

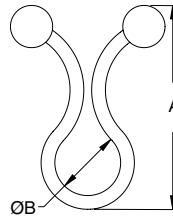
PLASTIC FASTENERS

View them all at
www.essentracomponents.com





**TL / TT
Twist Lock**



Specifications:

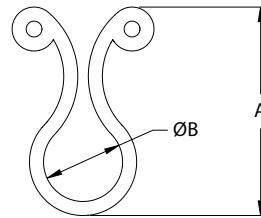
- Material: UL94 V-2 Nylon 6/6
- Color: Natural

Features:

- Ends twist into place with very little effort
- Releasable and reusable for easy wire bundling
- Smooth ball shaped ends won't cut into wire or cable insulation

Item No.	Approval	Bundle Ø B		A Ref.		Bulk Pack Qty.
		In	mm	In	mm	
TT001A	—	0.150 - .190	3.8 - 4.8	0.850	21.6	100
TL-250		0.200 - 0.300	5.1 - 7.6	0.900	22.9	1000
TL-350		0.300 - 0.400	7.6 - 10.2	1.030	26.1	1000
TL-450		0.400 - 0.500	10.2 - 12.7	1.200	30.5	1000
TL-600		0.550 - 0.650	14.0 - 16.5	1.330	33.7	1000
TL-750		0.700 - 0.800	17.8 - 20.3	1.550	39.4	1000
TL-950		Max 1.000	25.4	1.700	43.4	1000
TL-1125		Max 1.187	30.2	2.190	55.6	1000
TL-1375		Max 1.437	36.5	2.680	68.1	1000
TL-1500		Max 1.562	39.7	2.930	74.4	1000
TL-1750		Max 1.812	46.0	3.450	87.6	1000

**KL
Curly Lock**



Specifications:

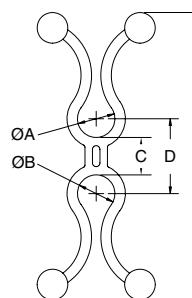
- Material: UL94 V-2 Nylon 6/6
- Color: Natural

Features:

- Ends twist into place with very little effort
- Releasable and reusable for easy wire bundling
- Rounded edges prevent abrasion

Item No.	Approval	Bundle Ø B		A Ref.		Bulk Pack Qty.
		In	mm	In	mm	
KL-125		0.125 - 0.150	3.2 - 3.8	0.480	12.2	1000
KL-200		0.160 - 0.240	4.1 - 6.1	0.820	20.7	1000
KL-250		0.200 - 0.300	5.1 - 7.6	0.910	23.0	1000
KL-350		0.300 - 0.400	7.6 - 10.2	1.030	26.2	1000
KL-450		0.400 - 0.500	10.2 - 12.7	1.200	30.5	1000
KL-600		0.550 - 0.650	14.0 - 16.5	1.250	31.8	1000
KL-750		0.700 - .0800	17.8 - 20.3	1.520	38.6	1000
KL-950		0.900 - 1.000	22.9 - 25.4	1.750	44.5	1000

**DTL
Dual Twist Lock**



Specifications:

- Material: UL94 V-2 Nylon 6/6
- Color: Natural

Features:

- Routes and separates two bundles
- Six bundle diameter ranges; from .20" - .80"
- Three spacer lengths; 1/4", 3/4" and 1-1/4"
- Cables are locked in place with a fingertip twist

Item No.	A and B Bundle Ø		C		D Ref.		E Ref.		Bulk Pack Qty.
	In	mm	In	mm	In	mm	In	mm	
DTL2525-4-01	.200-.300	5.1-7.6	0.250	6.4	0.500	12.7	1.920	48.8	500
DTL2525-12-01	.200-.300	5.1-7.6	0.750	19.1	1.000	25.4	2.420	61.5	500
DTL2525-20-01	.200-.300	5.1-7.6	1.250	31.8	1.500	38.1	2.920	74.2	500
DTL3535-4-01	.300-.400	7.6-10.2	0.250	6.4	0.600	15.2	2.180	55.4	500
DTL3535-12-01	.300-.400	7.6-10.2	0.750	19.1	1.100	27.9	2.680	68.1	500
DTL3535-20-01	.300-.400	7.6-10.2	1.250	31.8	1.600	40.6	3.180	80.8	500
DTL4545-4-01	.400-.500	10.2-12.7	0.250	6.4	0.600	15.2	2.180	55.4	500
DTL4545-12-01	.400-.500	10.2-12.7	0.750	19.1	1.100	27.9	2.680	68.1	500
DTL4545-20-01	.400-.500	10.2-12.7	1.250	31.8	1.600	40.6	3.180	80.8	500
DTL5555-4-01	.500-.600	12.7-15.2	0.250	6.4	0.600	15.2	2.180	55.4	500
DTL5555-12-01	.500-.600	12.7-15.2	0.750	19.1	1.100	27.9	2.680	68.1	500
DTL5555-20-01	.500-.600	12.7-15.2	1.250	31.8	1.600	40.6	3.180	80.8	500
DTL6565-4-01	.600-.700	15.2-17.8	0.250	6.4	0.600	15.2	2.180	55.4	500
DTL6565-12-01	.600-.700	15.2-17.8	0.750	19.1	1.100	27.9	2.680	68.1	500
DTL6565-20-01	.600-.700	15.2-17.8	1.250	31.8	1.600	40.6	3.180	80.8	500
DTL7575-4-01	.700-.800	17.8-20.3	0.250	6.4	1.000	25.4	3.100	78.7	500
DTL7575-12-01	.700-.800	17.8-20.3	0.750	19.1	1.500	38.1	3.600	91.4	500
DTL7575-20-01	.700-.800	17.8-20.3	1.250	31.8	2.000	50.8	4.100	104.1	500



CABLE CLIPS & CLAMPS

**HCS
Hinged Cable Saddle**



Specifications:

- Material: UL94 V-2 Nylon 6/6
- Color: Natural

Features:

- Separate locking top holds and provides excellent strain relief to mounted cables
- Teeth on cable saddle holds locking top securely in place
- Push the saddle ends together to release locking top and cables
- Snap lock with cup provides stability and protects mounting hole

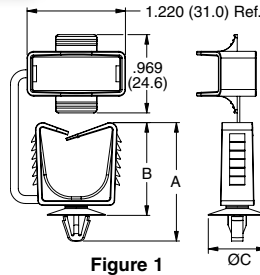


Figure 1

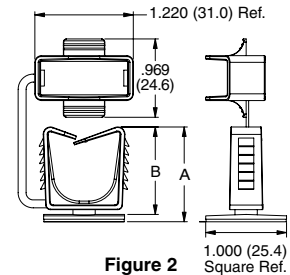


Figure 2

Item No.	Figure	A Ref.		B Max		C		Mounting Method		Panel Thickness		Cable Bundle Ø		Bulk Pack Qty.
		In	mm	In	mm	In	mm	In	mm	In	mm	In	mm	
HCS1-01	1	0.338	34.0	1.141	29.0	0.629	16	0.157 - 0.189 Hole	4.0 - 4.8 Hole	0.016 - 0.063	0.4 - 1.6	0.118 - 0.629	3.0 - 16.0	250
HCS2-01	1	1.4448	36.8	1.129	28.7	0.716	18.2	0.236 - 0.267 Hole	6.0 - 6.8 Hole	0.024 - 0.098	0.6 - 2.5	0.118 - 0.629	3.0 - 16.0	250
HCS3-01A4-RT	2	1.160	29.5	1.082	27.5	—	—	Adhesive		—	—	0.118 - 0.629	3.0 - 16.0	1000

**WCC
Webbed Centering Clip**



Specifications:

- Material: UL94 V-2 Nylon 6/6
- Color: Natural

Features:

- Cables are inserted into center of clamp. Clamp wraps around cables and locks them securely in place
- Finger grip eases installation
- Cupped base adds stability to the mounting and covers the hole completely

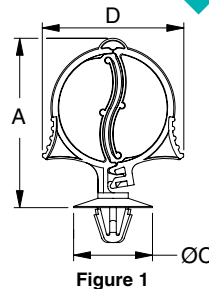


Figure 1

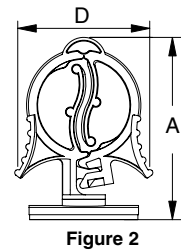
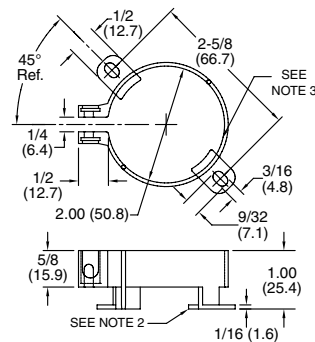


Figure 2



Item No.	Bundle Ø		Ø Mounting Hole		Panel Thickness		A Ref.		D Ref.		CO Ref.		Figure	Bulk Pack Qty.
	In	mm	In	mm	In	mm	In	mm	In	mm	In	mm		
WCC1-1-01	.118 - .311	3.0 - 7.9	.157 - .189	4.0 - 4.8	.019-.063	0.5 - 1.6	1.100	28.0	0.910	23.0	0.630	16.0	1	500
WCC1-2-01	.118 - .374	3.0 - 9.5	.157 - .189	4.0 - 4.8	.019-.063	0.5 - 1.6	1.220	31.0	1.060	27.0	0.630	16.0	1	500
WCC1-3-01	.118 - .500	3.0 - 12.7	.157 - .189	4.0 - 4.8	.019-.063	0.5 - 1.6	1.460	37.0	1.300	33.0	0.630	16.0	1	500
WCC2-1-01	.118 - .311	3.0 - 7.9	.236 - .267	6.0 - 6.8	.019-.098	0.5 - 1.6	1.100	28.0	0.910	23.0	0.720	18.4	1	500
WCC2-2-01	.118 - .374	3.0 - 9.5	.236 - .267	6.0 - 6.8	.019-.098	0.5 - 1.6	1.220	31.0	1.060	27.0	0.720	18.4	1	500
WCC2-3-01	.118 - .500	3.0 - 12.7	.236 - .267	6.0 - 6.8	.019-.098	0.5 - 1.6	1.460	37.0	1.300	33.0	0.720	18.4	1	500
WCC3-1-01A4-RT	.118 - .311	3.0 - 7.9	Adhesive	Adhesive	Adhesive	Adhesive	1.100	28.0	0.910	23.0	Adhesive	Adhesive	2	1000
WCC3-2-01A4-RT	.118 - .374	3.0 - 9.5	Adhesive	Adhesive	Adhesive	Adhesive	1.220	31.0	1.060	27.0	Adhesive	Adhesive	2	1000
WCC3-3-01A4-RT	.118 - .500	3.0 - 12.7	Adhesive	Adhesive	Adhesive	Adhesive	1.460	37.0	1.300	33.0	Adhesive	Adhesive	2	1000

**SCH / SCHS
Standoff Capacitor Holder**



Specifications:

- Material: UL94 HB Glass Filled Nylon 6/6
- Color: Black

Notes:

Optional:

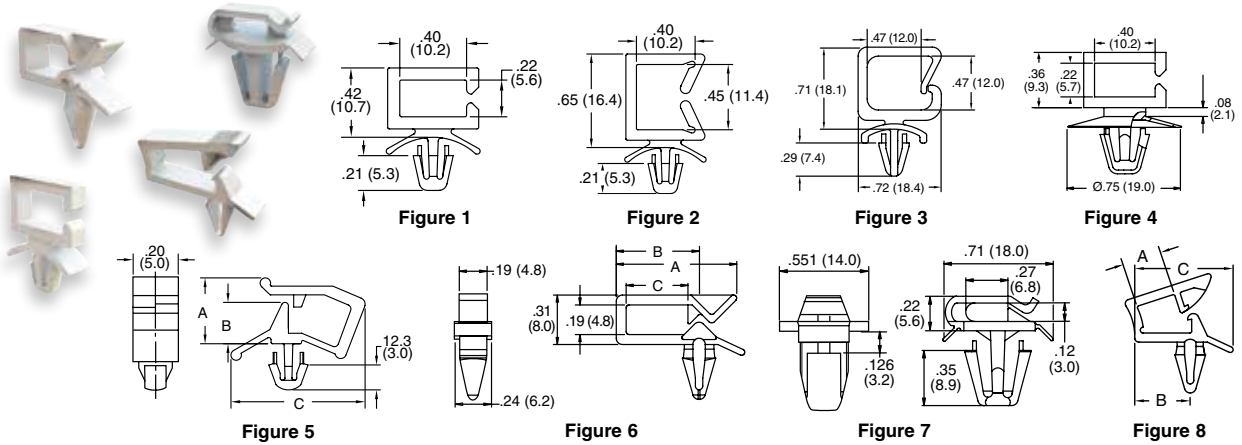
1. Clamping hardware; Screw (S6B) Stainless Steel, Zinc Plating; Quick Nut (QN-6) Spring Steel C1050, Coating: Black Phosphate
2. Spacer to elevate capacitor 3/32 (2.4) from chassis
3. Anti-rotation rib (3 locations)

Item No.	Description	Bulk Pack Qty.
SCHS-2	w/spacer, w/o hardware (Note 1)	100
SCH-2	w/o spacer, w/o hardware	100
SCHS-2-H	w/spacer, w/ clamping hardware	100
SCH-2-H	w/o spacer, w/ clamping hardware	100





WS-SE
Wire Saddle - Side Entry



Specifications:

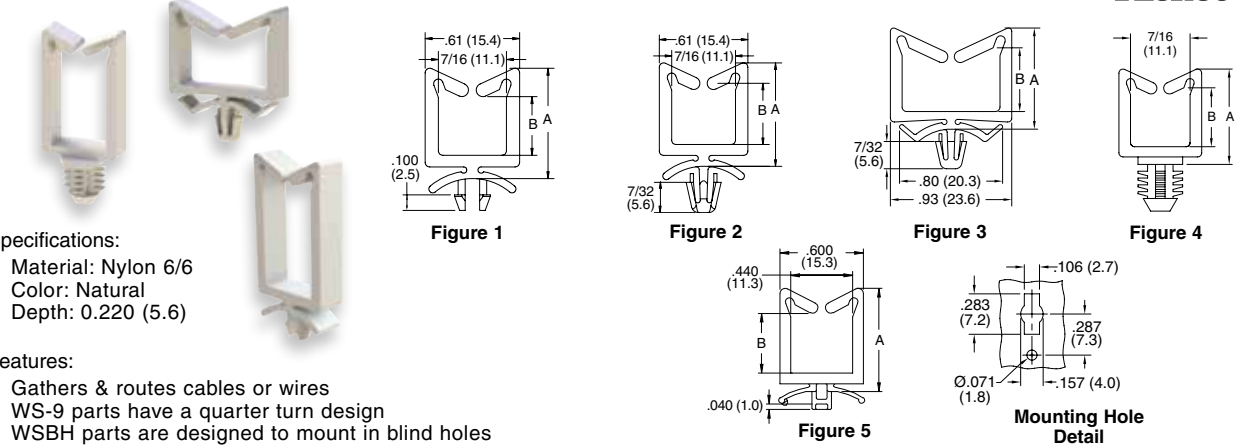
- Material: Nylon 6/6
- Color: Natural

Features:

- Gathers and routes single or groups of wires and cables
- Side entry provides low height where clearance is a problem

Item No.		Approval	Figure	A Ref.		B		C Ref.		Mounting Hole Ø		Panel Thickness		Bulk Pack Qty.
UL94 V-2	UL94 V-0			In	mm	In	mm	In	mm	In	mm	In	mm	
WS-SE-A-1-01	WS-SE-A-1-19	—	1							0.187	4.8	0.031 - 0.078	0.8 - 2.0	1000
WS-SE-A-2-01	WS-SE-A-2-19	—	2							0.187	4.8	0.031 - 0.078	0.8 - 2.0	1000
WS-SE-A-3-01	WS-SE-A-3-19	—	3							0.187	4.8	0.024 - 0.071	0.6 - 1.8	1000
WS-SE-A-4-01	WS-SE-A-4-19	—	4							0.256	6.5	0.031 - 0.078	0.8 - 2.0	1000
WS-SE1-1-01	—	RU	5	0.190	4.8	0.090	2.4	0.500	12.7	0.138	3.5	0.020 - 0.063	0.5 - 1.6	1000
WS-SE1-2-01	—	RU	5	0.260	6.7	0.160	4.2	0.590	15.1	0.138	3.5	0.020 - 0.063	0.5 - 1.6	1000
WS-SE1-3-01	—	RU	5	0.340	8.5	0.230	5.7	0.810	20.3	0.138	3.5	0.020 - 0.063	0.5 - 1.6	1000
WS-SE2-1-01	—	RU	6	0.650	16.6	0.410	10.5	0.280	7.1	0.187	4.8	0.020 - 0.063	0.5 - 1.6	1000
WS-SE2-2-01	—	RU	6	0.770	19.5	0.530	13.4	0.390	10.0	0.187	4.8	0.020 - 0.063	0.5 - 1.6	1000
WS-SE3-1-01	—	RU	7							0.314	8.0	0.062 - 0.102	1.6 - 2.6	1000
LWS-SE2-1-01	—	RU	8	0.270	6.9	0.380	9.7	0.670	17.0	0.187	4.8	0.020 - 0.063	0.5 - 1.6	1000
LWS-SE2-2-01	—	RU	8	0.400	10.2	0.530	13.5	0.820	20.8	0.187	4.8	0.020 - 0.063	0.5 - 1.6	1000

WS / WWS / WSBH
Wire Saddle



Specifications:

- Material: Nylon 6/6
- Color: Natural
- Depth: 0.220 (5.6)

Features:

- Gathers & routes cables or wires
- WS-9 parts have a quarter turn design
- WSBH parts are designed to mount in blind holes

Item No.		Approval	Figure	A Ref.		B Ref.		Mounting Hole Ø		Panel Thickness		Bulk Pack Qty.
UL94V-2	UL94 V-0			In	mm	In	mm	In	mm	In	mm	
WS-9-1-01	—	—	5	0.510	13.0	0.190	4.8			0.031 - 0.063	0.8 - 1.6	1000
WS-1-01	WS-1-19	RU	1	0.520	13.2	0.190	4.8	0.187	4.8	0.062	1.6	1000
WS-A-1-01	WS-A-1-19	RU	2	0.520	13.2	0.190	4.8	0.187	4.8	0.062	1.6	1000
WSBH-1-01	—	RU	4	0.520	13.2	0.190	4.8	.312	7.9	0.250	6.4	1000
WS-9-2-01	—	—	5	0.700	17.8	0.390	10.0			0.031 - 0.063	0.8 - 1.6	1000
WS-2-01	WS-2-19	RU	1	0.710	18.0	0.380	9.7	0.187	4.8	0.062	1.6	1000
WS-A-2-01	WS-A-2-19	RU	2	0.710	18.0	0.380	9.7	0.187	4.8	0.062	1.6	1000
WS-A-2-1-01	WS-A-2-1-19	RU	2	0.710	18.0	0.380	9.7	0.187	4.8	0.062	1.6	1000
WS-A-2-2-01	WS-A-2-2-19	RU	2	0.710	18.0	0.380	9.7	0.187	4.8	0.125	3.2	1000
WSBH-2-01	—	RU	4	0.710	18.0	0.380	9.7	0.312	7.9	0.250	6.4	1000
WWS-A-2-01	WWS-A-2-19	RU	3	0.770	19.6	0.500	12.7	0.187	4.8	0.047	1.19	1000
WS-9-3-01	—	—	5	1.060	26.9	0.750	19.1			0.031 - 0.063	0.8 - 1.6	1000
WS-3-01	WS-3-19	RU	1	1.070	27.2	0.740	18.8	0.187	4.8	0.062	1.6	1000
WS-A-3-01	WS-A-3-19	RU	2	1.070	27.2	0.740	18.8	0.187	4.8	0.062	1.6	1000
WS-A-2-3-01	WS-A-2-3-19	RU	2	1.070	27.2	0.740	18.8	0.187	4.8	0.125	3.2	1000
WSBH-3-01	—	RU	4	1.070	27.2	0.740	18.8	0.312	7.9	0.250	6.4	1000
WWS-A-3-01	WWS-A-3-19	RU	3	1.120	28.5	0.850	21.6	0.187	4.8	0.047	1.19	1000
WS-9-4-01	—	—	5	1.370	34.8	1.070	27.2			0.031 - 0.063	0.8 - 1.6	1000
WS-4-01	WS-4-19	RU	1	1.380	35.0	1.050	26.7	0.187	4.8	0.062	1.6	1000
WS-A-4-01	WS-A-4-19	RU	2	1.380	35.0	1.050	26.7	0.187	4.8	0.062	1.6	1000
WS-A-2-4-01	WS-A-2-4-19	RU	2	1.380	35.0	1.050	26.7	0.187	4.8	0.125	3.2	1000
WSBH-4-01	—	—	4	1.380	35.0	1.050	26.7	0.312	7.9	0.250	6.4	1000