



Chipsmall Limited consists of a professional team with an average of over 10 year of expertise in the distribution of electronic components. Based in Hongkong, we have already established firm and mutual-benefit business relationships with customers from,Europe,America and south Asia,supplying obsolete and hard-to-find components to meet their specific needs.

With the principle of “Quality Parts,Customers Priority,Honest Operation,and Considerate Service”,our business mainly focus on the distribution of electronic components. Line cards we deal with include Microchip,ALPS,ROHM,Xilinx,Pulse,ON,Everlight and Freescale. Main products comprise IC,Modules,Potentiometer,IC Socket,Relay,Connector.Our parts cover such applications as commercial,industrial, and automotives areas.

We are looking forward to setting up business relationship with you and hope to provide you with the best service and solution. Let us make a better world for our industry!



## Contact us

Tel: +86-755-8981 8866 Fax: +86-755-8427 6832

Email & Skype: info@chipsmall.com Web: www.chipsmall.com

Address: A1208, Overseas Decoration Building, #122 Zhenhua RD., Futian, Shenzhen, China



# SE880 RDK User Manual

1VV0301047 – 2013-05-1











## Contents

<b>1. Introduction .....</b>	<b>7</b>
1.1. Scope.....	7
1.2. Audience.....	7
1.3. Contact Information, Support .....	7
1.4. Text Conventions.....	8
1.5. Related Documents.....	8
<b>2. Preparing for the SE880 RDK .....</b>	<b>9</b>
What is Necessary .....	9
2.1. Installing the USB Drivers .....	9
2.2. Installing SiRFLive .....	9
<b>3. SE880 Reference Design Kit.....</b>	<b>10</b>
3.1. What's in the Box .....	10
3.2. SE880 RDK Features.....	11
<b>4. SE880 RDK Reference Layout.....</b>	<b>12</b>
<b>5. Step-by-Step: Running the SE880 RDK.....</b>	<b>13</b>
5.1. Step-by-Step: First Time Connection.....	13
5.2. Powering on the RDK.....	14
<b>6. SE880 on SiRFLive .....</b>	<b>15</b>
6.1. Main Interface.....	15
6.2. Connecting To the SE880 .....	15
6.2.1. Main Menu Bar .....	15
6.2.2. Main Tool Bar.....	16
6.2.3. Rx Port Settings .....	16
6.3. SiRFLive Windows .....	17
6.3.1. Signal View .....	17
6.3.2. Radar View.....	18
6.3.3. Debug View.....	19
6.3.4. Location View.....	20







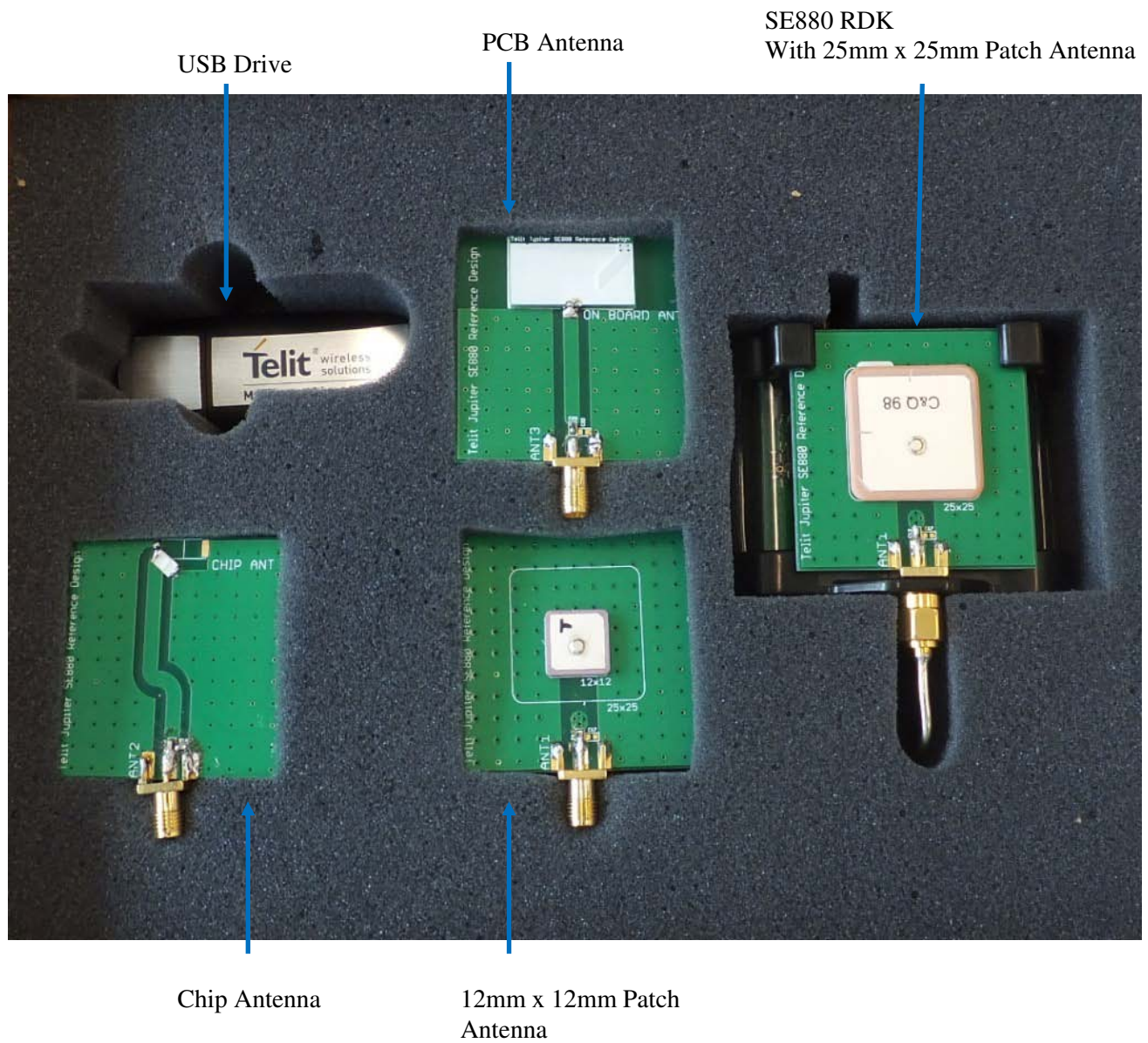






### 3. SE880 Reference Design Kit

#### 3.1. What's in the Box









## 4. SE880 RDK Reference Layout

The reference schematic and PCB layout are provided in the USB memory which comes alone with the RDK. The performance of SE880 will be optimized with the following guidelines:

1. Use the bottom layer (layer-2) as the big ground plane for both RF and heat transfer.
2. The ground plane with via holes under the SE880 (shown in Figure 3) serves two purposes:
  - a. Provide a good RF ground plane for the SE880.
  - b. The big via hole dominates heat transfer from the SE880 to the big ground on layer-2. This enhances TCXO implementation by provide the TCXO a thermally stable environment. Heat transfer of copper is 1400 times fast than FR4.
3. Coplanar waveguide calculator should be used to determine the appropriate transmission line structure to achive 50 Ohm input trace for the antenna at 1.575GHz..

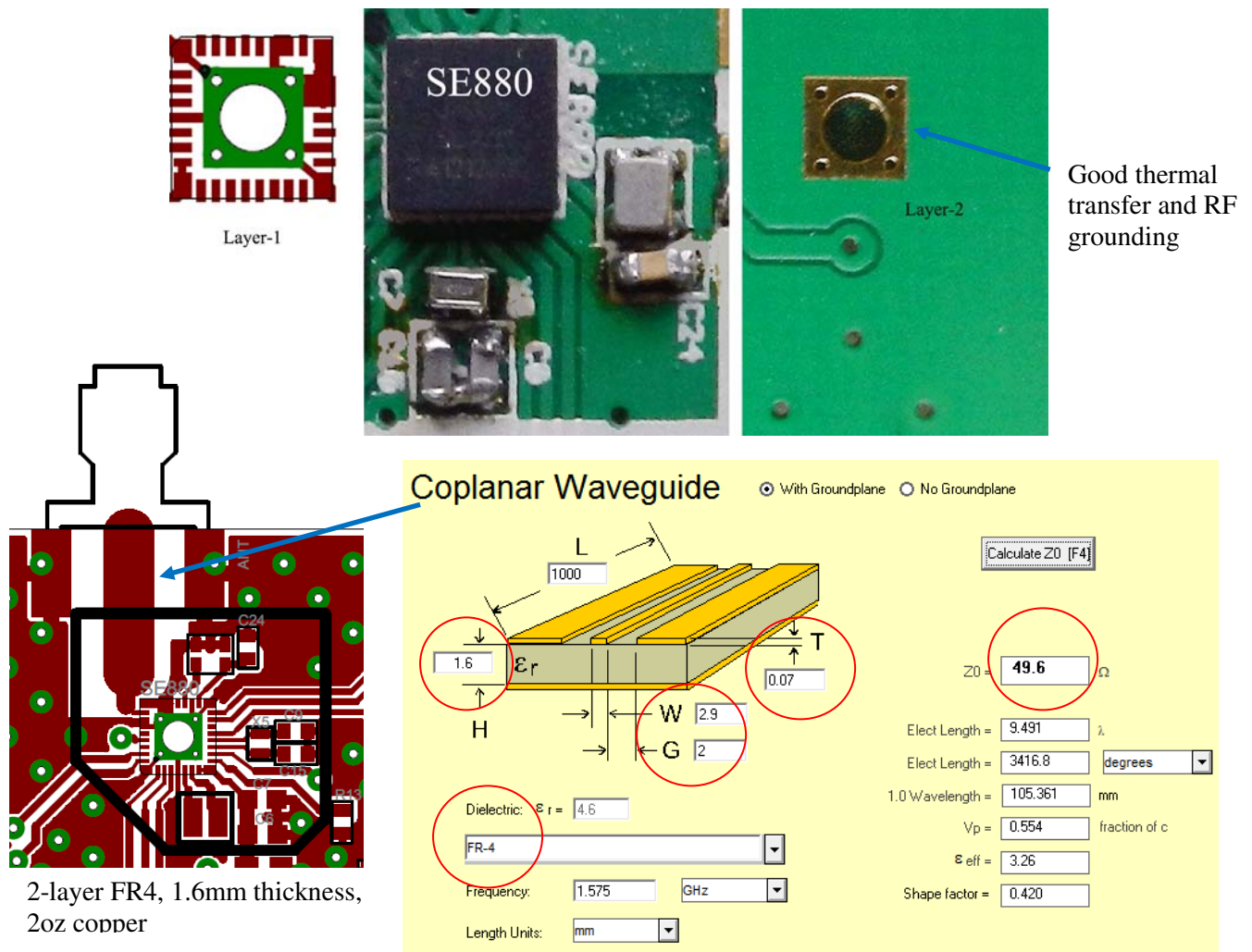


Figure 3: SE880 PCB Layout





## 6. SE880 on SiRFLive

Launch the SiRFLive application.



### 6.1. Main Interface

After launching SiRFLive, first notice the application's main interface.

File Receiver Features AGPS Window Help

Figure 6: Main Menu Bar



Figure 7: Main Tool Bar

### 6.2. Connecting To the SE880

The user can utilize either the *Main Menu Bar* or the *Main Tool Bar*.

#### 6.2.1. Main Menu Bar

Under the option "Receiver" on the *Main Menu Bar*, there is a selection "Connect. . ." This will open the Receiver settings for connection.

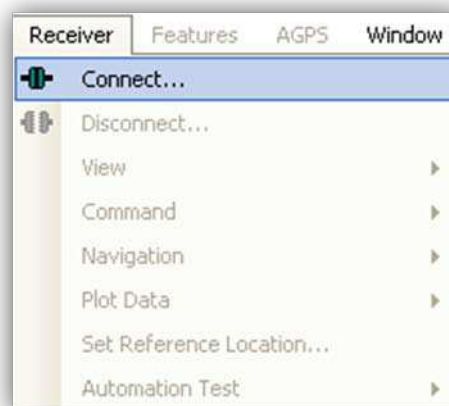


Figure 8: Connect to Receiver





### 6.2.2. Main Tool Bar



Select the “Receiver Settings” button



Or the “Connect” button



### 6.2.3. Rx Port Settings

Select the GSD4e Product Family, RS232/USB, and the Correct COM Port.

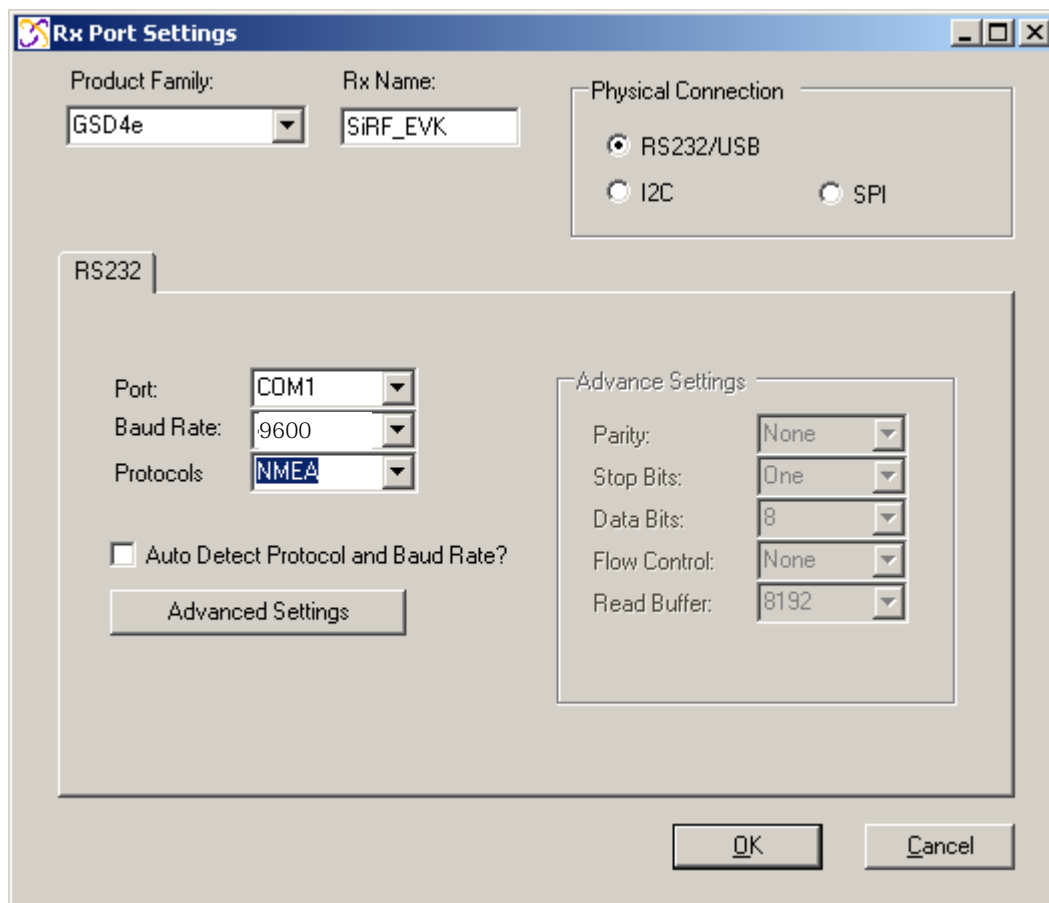


Figure 9: The Rx Port Connection Window



Default Baud rate for SE880 RDK is NMEA 9600 baud at power up.







### 6.3.3. Debug View



(main tool bar icon)

Shows the communication messages with the receiver.

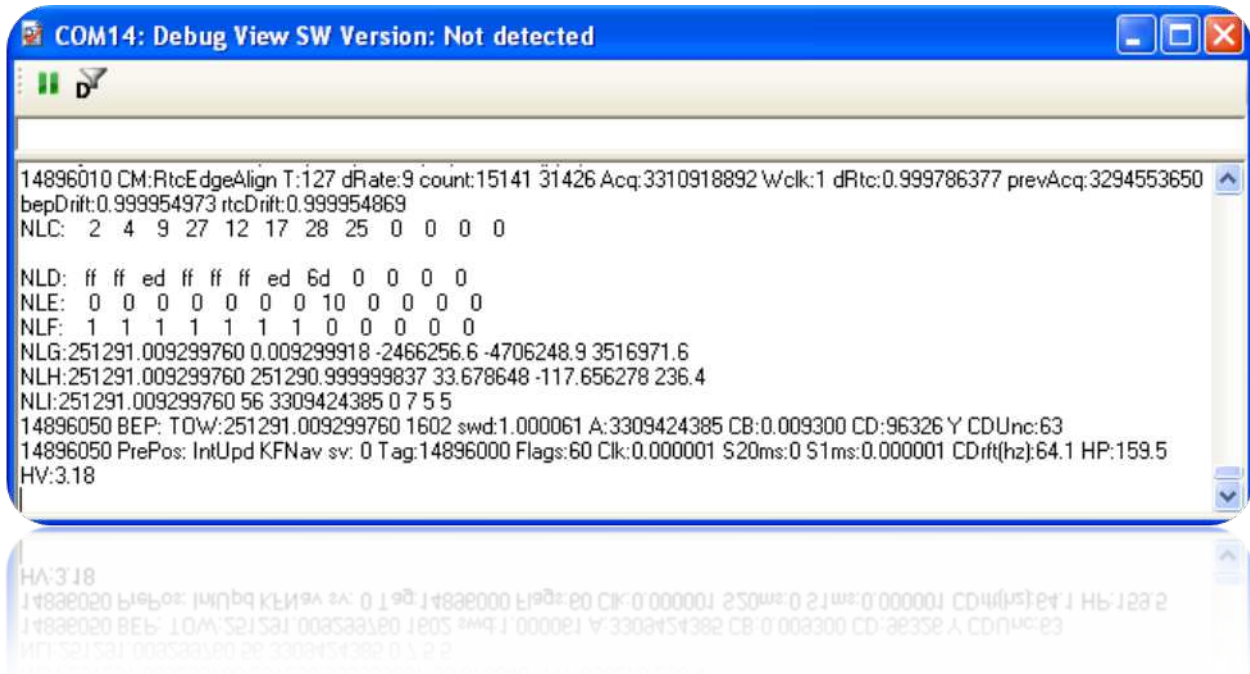


Figure 12: Debug view with One Socket Protocol messages.





### 6.3.4. Location View



(main tool bar icon)

Displays more detailed information regarding the UTC, TOW, Latitude, Longitude, Altitude, etc.

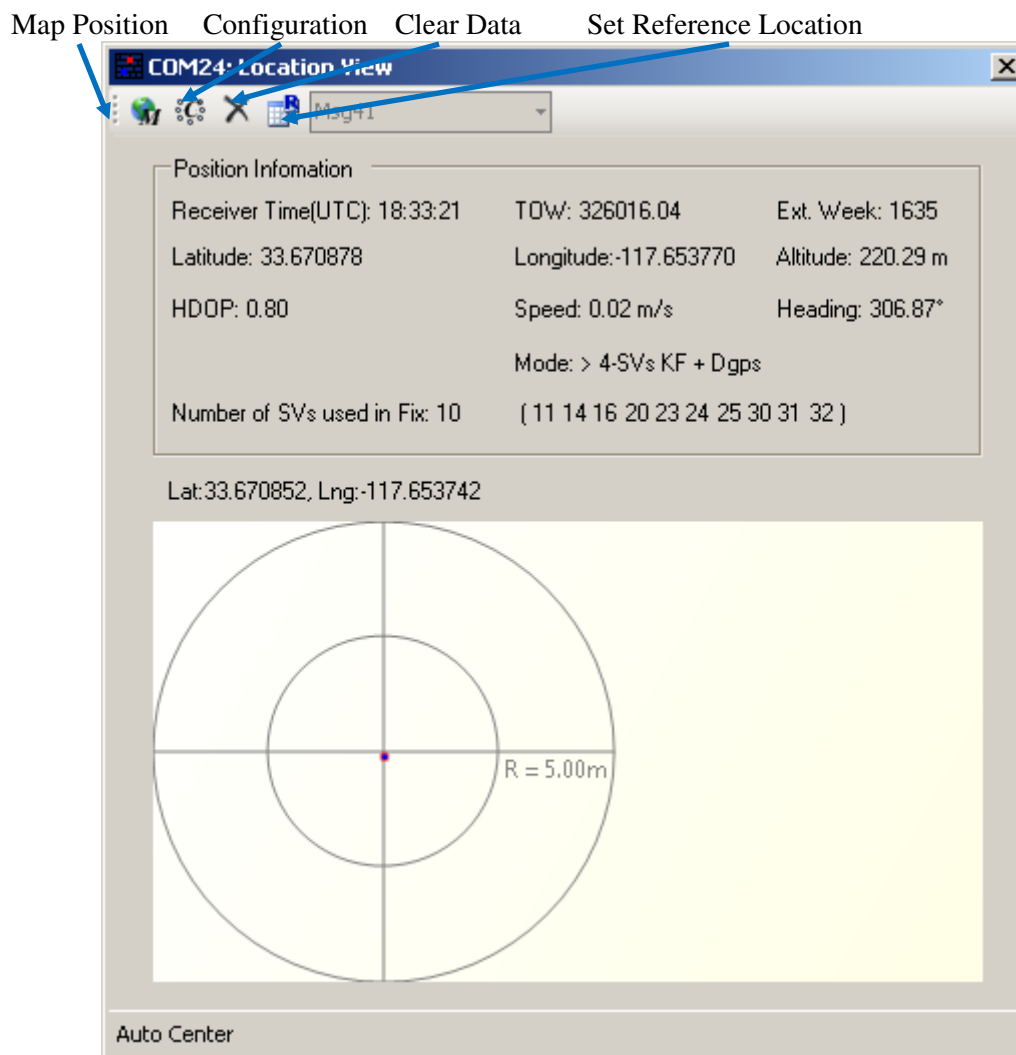


Figure 13: Location view



Map position button requires Internet access to work.





## 6.4.2. Switch Protocol

The number of available commands in NMEA is limited compared to OSP. Switching to OSP for testing is recommended.

1. On the *Main Menu Bar*, select “Receiver” > “Command” > “Switch Protocols. . .”

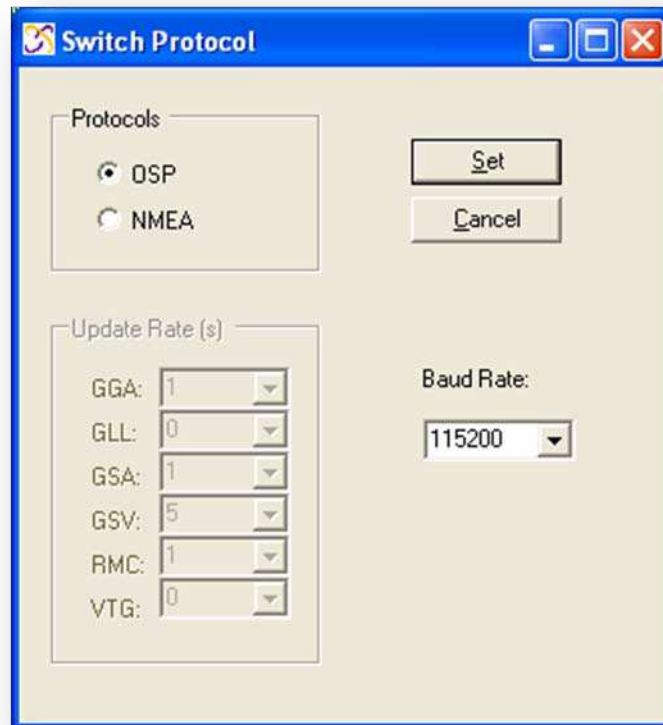


Figure 16: Switching to OSP protocol with its default 115200 baud rate

2. Click “Set” to apply settings.

Switching to NMEA should be similar.

## 6.4.3. Logging Data



(main tool bar icon)

SiRFLive is capable of collecting either the OSP message stream or the NMEA message stream into a log file.

1. While the receiver is outputting messages to SiRFLive, click on the *Log File* icon on the *Main Tool Bar* or go through the *Main Menu Bar* under “Log File” then “Start. . .” shown in Fig 16.





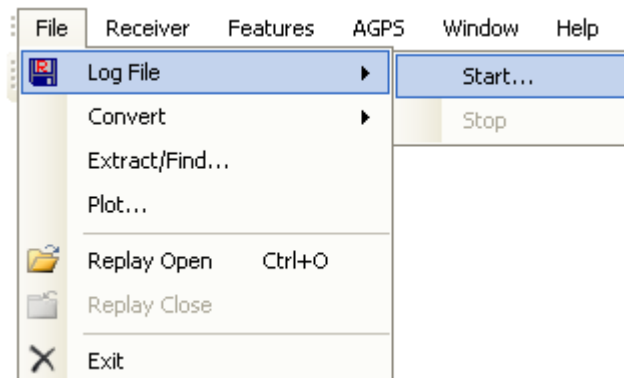


Fig 17: Main Menu Bar access to the Log File command.

- i. The *Log File* window should open, which is shown in Fig 17. Click on the “. . .” button, as indicated by the arrow in Fig 19, to open a window where the user can specify the output folder and the output file name.

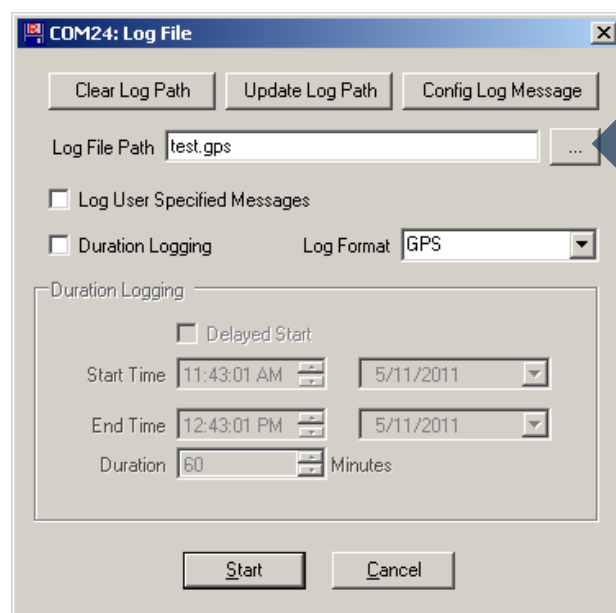


Fig 18: Clicking on the “. . .” button will give the user the control of the output folder and output name

- ii. After specifying the output folder and output name, close the “Specify log file name:” window by clicking *Open* and the “Log File Path:” bar should be filled with the file path. Select the desired Log Format, and click “Start” in order to start logging.



## 7. Document History

Revision	Date	Changes
0	2013-01-16	First draft
1	2013-05-01	Revision 1

