



Chipsmall Limited consists of a professional team with an average of over 10 year of expertise in the distribution of electronic components. Based in Hongkong, we have already established firm and mutual-benefit business relationships with customers from,Europe,America and south Asia,supplying obsolete and hard-to-find components to meet their specific needs.

With the principle of “Quality Parts,Customers Priority,Honest Operation,and Considerate Service”,our business mainly focus on the distribution of electronic components. Line cards we deal with include Microchip,ALPS,ROHM,Xilinx,Pulse,ON,Everlight and Freescale. Main products comprise IC,Modules,Potentiometer,IC Socket,Relay,Connector.Our parts cover such applications as commercial,industrial, and automotives areas.

We are looking forward to setting up business relationship with you and hope to provide you with the best service and solution. Let us make a better world for our industry!



Contact us

Tel: +86-755-8981 8866 Fax: +86-755-8427 6832

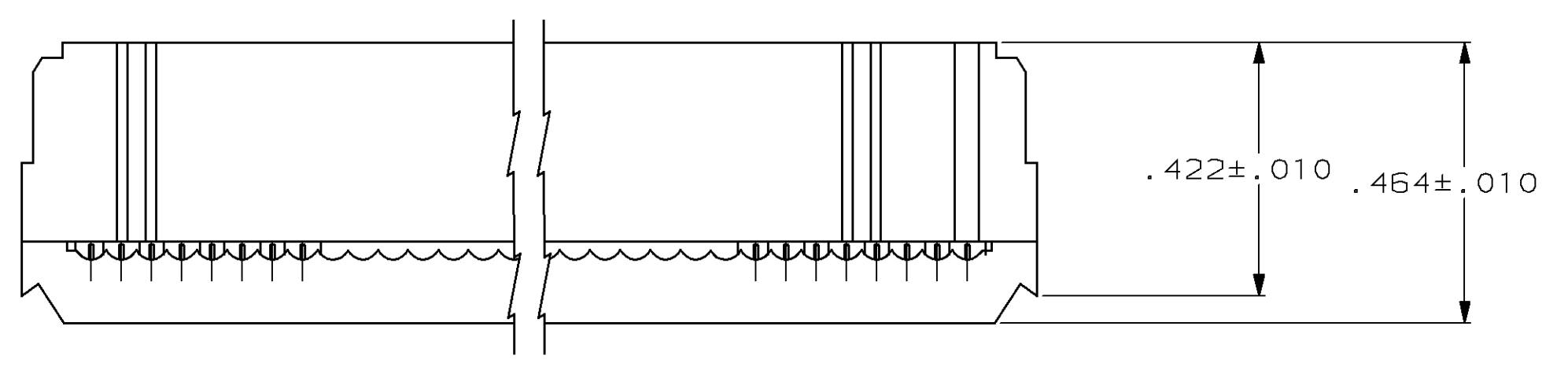
Email & Skype: info@chipsmall.com Web: www.chipsmall.com

Address: A1208, Overseas Decoration Building, #122 Zhenhua RD., Futian, Shenzhen, China



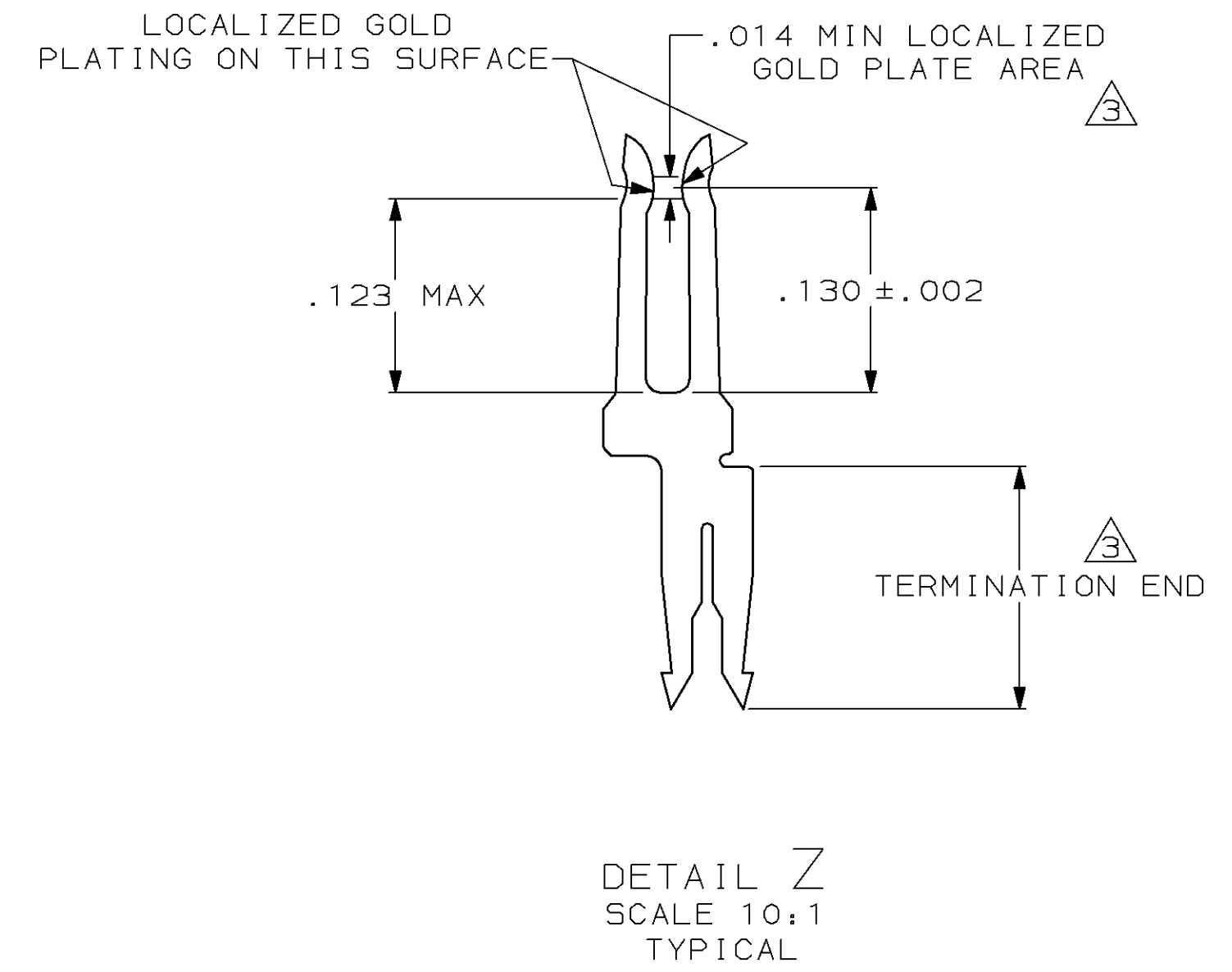
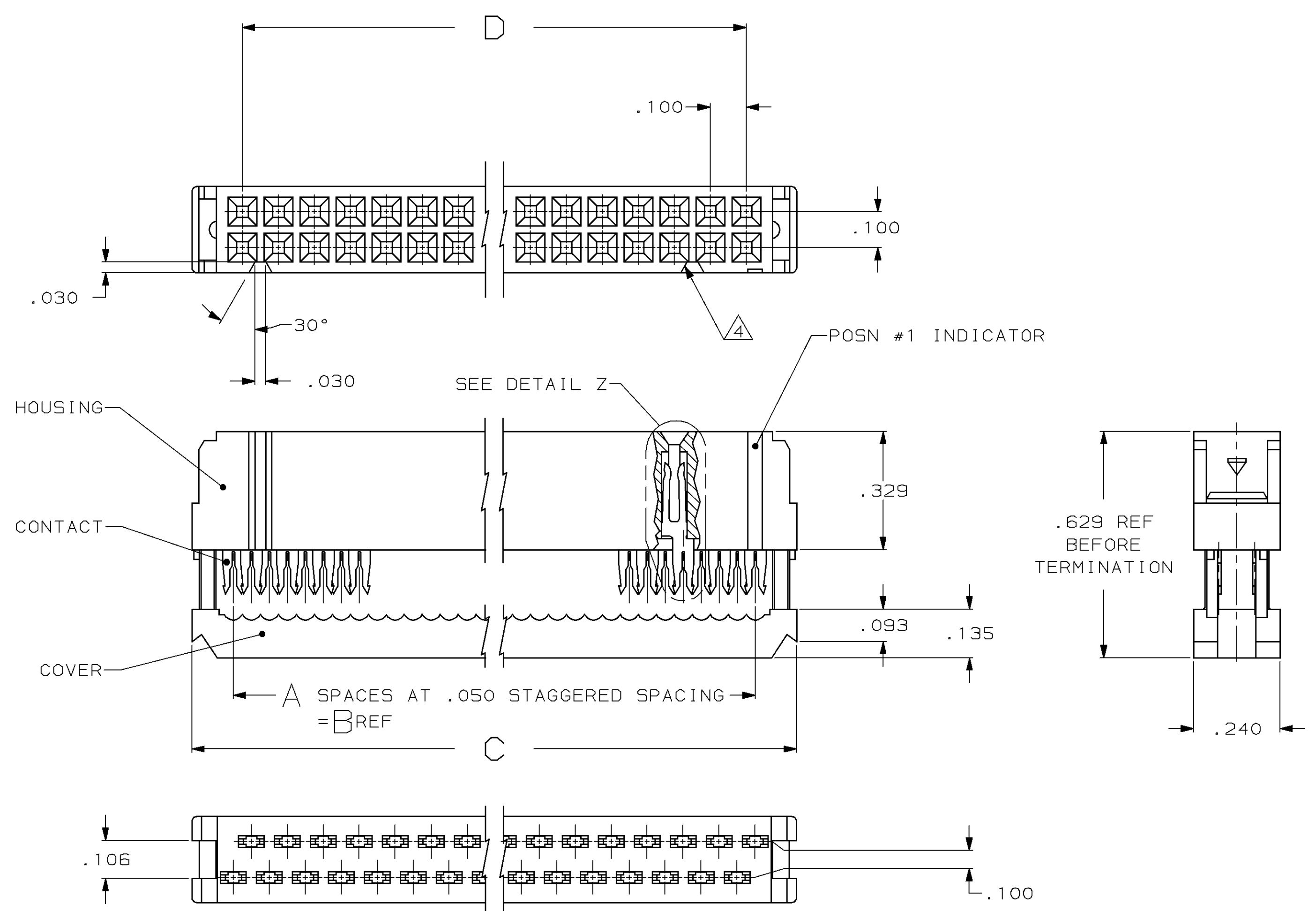
DRAWING MADE IN THIRD ANGLE PROJECTION
 THIS DRAWING IS UNPUBLISHED. RELEASED FOR PUBLICATION
 © COPYRIGHT 19 BY AMP INCORPORATED, HARRISBURG, PA. ALL INTERNATIONAL RIGHTS RESERVED. AMP PRODUCTS MAY BE COVERED BY U.S. AND FOREIGN PATENTS AND/OR PATENTS PENDING.

LOC AR		DIST	P	F	ZONE	LTR	DESCRIPTION	DATE	APPD
		35				H	REV PER ECN BD4386	12-6-90	-
						J	REV PER EC 0020-1041-93	12/01/93	JS
						K	OBS 1--3 PER EC 0020-933-93	03/15/94	DK
						L	OBSOLETE -14	21 AUG 97	JGH
							PER EC 0410-197-96		



TERMINATED VIEW

- ① UL RATED 94V-0 THERMOPLASTIC, COLOR: BLACK.
- ② PHOSPHOR BRONZE PER QQ-B-750.
- ③ PLATED WITH .000015 GOLD ON LOCALIZED GOLD PLATE AREA, .000100 - .000200 BRIGHT TIN LEAD ON TERMINATION END, ALL OVER .000050 NICKEL ON ENTIRE CONTACT.
- ④ POLARIZING FEATURE DOES NOT EXIST ON SAME END AS THE POSN #1 INDICATOR ON 10 AND 14 POSN PRODUCT.



	D	C	B	A	NO OF POSN	PART NUMBER
OBSOLETE	1.700	1.980	1.750	35	36	1-499997-4
OBSOLETE	2.100	2.380	2.150	43	44	1-499997-3
	3.100	3.380	3.150	63	64	1- -2
	2.900	3.180	2.950	59	60	1- -1
	2.400	2.680	2.450	49	50	1- -0
	1.900	2.180	1.950	39	40	-9
	1.600	1.880	1.650	33	34	-8
	1.400	1.680	1.450	29	30	-7
	1.200	1.480	1.250	25	26	-6
	1.100	1.380	1.150	23	24	-5
	.900	1.180	.950	19	20	-4
	.700	.980	.750	15	16	-3
	.600	.880	.650	13	14	-2
	.400	.680	.450	9	10	499997-1

UNLESS OTHERWISE SPECIFIED DIMENSIONS ARE IN INCHES TOLERANCES ON:		DR J. PEACHEY 2-19-86	AMP INCORPORATED Harrisburg, Pa. 17105		
2 PL DEC ±.005		CHK JAY SAUDER 3-18-86			
3 PL DEC ±.005		APPD JAY SAUDER 3-18-86	NAME RECEPTACLE KIT, AMP-LATCH NOVO, MIL PLZN, 15 GOLD DUPLEX CONTACTS, W/O STRAIN RLF		
ANGLES ±5°		APPD D. HOFFMAN 3-18-86			
MATERIAL	MOLDED PARTS:	PRODUCT SPEC	SIZE	FSCM NO	DRAWING NO
CONTACTS: ②	CONTACTS: ③	108-40000	D	00779	499997
FINISH	CONTACTS: ③	APPLICATION SPEC	SCALE		
		114-40005	4:1		
WEIGHT					SHEET 1 of 1
					CUSTOMER DRAWING