



Chipsmall Limited consists of a professional team with an average of over 10 year of expertise in the distribution of electronic components. Based in Hongkong, we have already established firm and mutual-benefit business relationships with customers from,Europe,America and south Asia,supplying obsolete and hard-to-find components to meet their specific needs.

With the principle of “Quality Parts,Customers Priority,Honest Operation,and Considerate Service”,our business mainly focus on the distribution of electronic components. Line cards we deal with include Microchip,ALPS,ROHM,Xilinx,Pulse,ON,Everlight and Freescale. Main products comprise IC,Modules,Potentiometer,IC Socket,Relay,Connector.Our parts cover such applications as commercial,industrial, and automotives areas.

We are looking forward to setting up business relationship with you and hope to provide you with the best service and solution. Let us make a better world for our industry!



Contact us

Tel: +86-755-8981 8866 Fax: +86-755-8427 6832

Email & Skype: info@chipsmall.com Web: www.chipsmall.com

Address: A1208, Overseas Decoration Building, #122 Zhenhua RD., Futian, Shenzhen, China



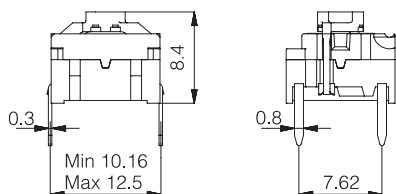
multimec[®] illumec™ 4A

Technical Data

- through-hole or SMD
- 50mA/24VDC
- single pole/momentary
- 10,000,000 operations life time
- IP67 sealing
- temperature range:
high temp. switch: -40/+160°C
LED: -30/+85°C

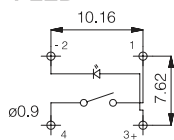


Dimensions (through-hole)

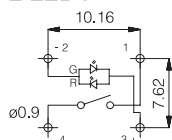


PCB layout and Circuit Diagram

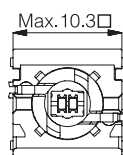
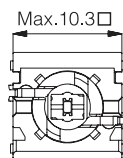
1 LED



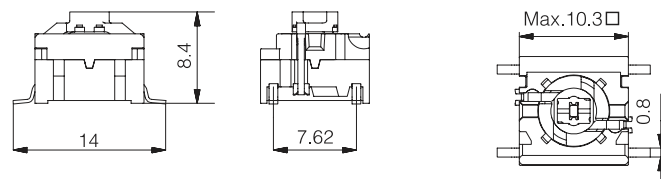
2 LEDs



Top View

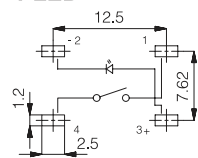


Dimensions (SMD)

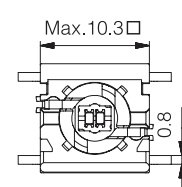
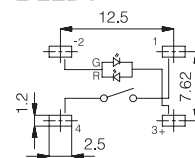


PCB layout and Circuit Diagram

1 LED



2 LEDs



Technical specifications for 4A switch and LEDs see pages 35 and 36

How to order

4 A

Switch Mounting
SH9 surface mount
TH9 through-hole

+

LED Illuminated Cap
01 **1A 10,12,14,16,18**
22 **1B 10,12,14,16,18**
42
61
82
2242
8222
8242

1H Solid Colour + lens 1,2,4,6,8

1C Solid Colour + lens 1,2,4,6,8 +

2 C or **2 D**
Bezel Solid Colour Bezel Solid Illuminated
Colour Colour Lens

2 C or **2 D**
Bezel Solid Colour Bezel Solid Illuminated
Colour Colour Lens

Colour codes

LEDs
01 blue
22 green
42 yellow
61 white
82 red
2242 green/yellow
8222 red/green
8242 red/yellow

Illuminated Caps
10 frosted blue
12 frosted green
14 frosted yellow
16 frosted white
18 frosted red

Lenses
1 transparent
2 green
4 yellow
6 frosted white
8 red

Solid Colours Caps and Bezels

For 1A, 1B and 2C only:
00 blue
02 green
03 grey
04 yellow
06 white
08 red
09 black
30 ultra blue
40 dusty blue
42 aqua blue
32 mint green
33 tele grey
08 red
34 melon
38 noble red
50 metal dark blue
53 metal light grey
57 metal dark grey
58 metal bordeaux

Dimensions

Caps See Page
1A - 1H 11
1B - 1C 10
2C - 2D Same as for 2A/B 10

Ordering example: 4ASH982 + 1A18 or 4ATH901 + 1B10 + 2C09

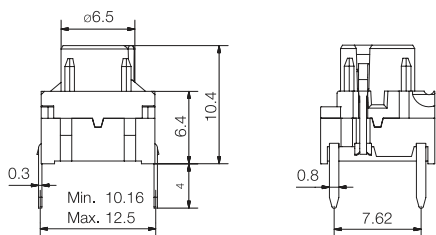
For updates of products and/or changes of specifications please see www.mec.dk

Technical Data

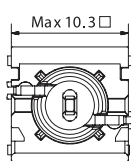
- through-hole or SMD
- 50mA/24VDC
- single pole/momentary
- 10,000,000 operations life time
- IP67 sealing
- temperature range:
 - high temp. switch; -40/+160°C
 - LED: -30/+85°C



Dimensions (through-hole)

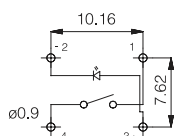


Top View

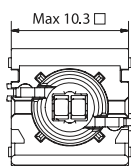
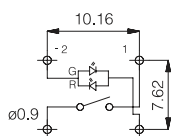


PCB layout and Circuit Diagram

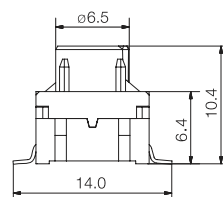
1 LED



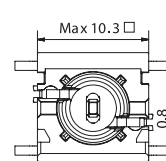
2 LEDs



Dimensions (SMD)

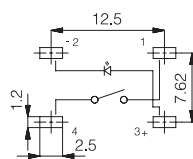


Top View

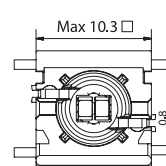
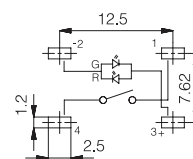


PCB layout and Circuit Diagram

1 LED



2 LEDs



Technical specifications for 4F switch and LEDs see pages 35 and 36

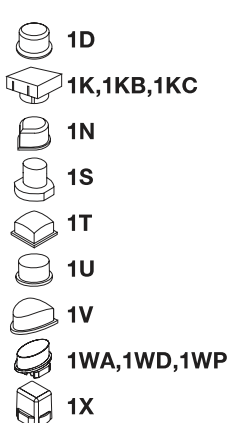
How to order

4 F [] [] []

Switch **Mounting**
SH9 surface mount
TH9 through-hole

LED
01
22
42
61
82
2242
8222
8242

Illuminated Cap



Colour code

11,16	[] [] []	Cap	Solid Colour	Illuminated Lens
11,16	[] [] []	[] [] []	[] [] []	[] [] []
10,12,14,16,18	[] [] []	[] [] []	[] [] []	1E Solid Colour + lens 1,2,4,6,8
11	[] [] []	[] [] []	[] [] []	1F Solid Colour + lens 1,2,4,6,8
16	[] [] []	[] [] []	[] [] []	1Q Solid Colour + lens 1,6
16	[] [] []	[] [] []	[] [] []	1R Solid Colour + lens 1,6
16	[] [] []	[] [] []	[] [] []	[] [] []
16	[] [] []	[] [] []	[] [] []	[] [] []
11	[] [] []	[] [] []	[] [] []	[] [] []

Colour codes

LEDs
01 blue
22 green
42 yellow
61 white
82 red
2242 green/yellow
8222 red/green
8242 red/yellow

Illuminated Caps
10 frosted blue
11 transparent
12 frosted green
14 frosted yellow
16 frosted white
18 frosted red

Lenses
1 transparent
2 green
4 yellow
6 frosted white
8 red

Solid Colours

1E,1F **1Q,1R**
00 blue **00** blue
02 green **03** grey
03 grey **08** red
04 yellow **09** black
06 white
08 red
09 black

Dimensions

Caps **See Page**
1D,1E,1F 15
1K,1KB,1KC 16
1N 14
1Q,1R 18
1S 21
1T,1U,1V 19
1WA,1WD,1WP 17
1X 20

Ordering example: 4FSH98242 + 1D11 or 4FTH922 + 1T16

For updates of products and/or changes of specifications please see www.mec.dk