



Chipsmall Limited consists of a professional team with an average of over 10 year of expertise in the distribution of electronic components. Based in Hongkong, we have already established firm and mutual-benefit business relationships with customers from,Europe,America and south Asia,supplying obsolete and hard-to-find components to meet their specific needs.

With the principle of “Quality Parts,Customers Priority,Honest Operation,and Considerate Service”,our business mainly focus on the distribution of electronic components. Line cards we deal with include Microchip,ALPS,ROHM,Xilinx,Pulse,ON,Everlight and Freescale. Main products comprise IC,Modules,Potentiometer,IC Socket,Relay,Connector.Our parts cover such applications as commercial,industrial, and automotives areas.

We are looking forward to setting up business relationship with you and hope to provide you with the best service and solution. Let us make a better world for our industry!



Contact us

Tel: +86-755-8981 8866 Fax: +86-755-8427 6832

Email & Skype: info@chipsmall.com Web: www.chipsmall.com

Address: A1208, Overseas Decoration Building, #122 Zhenhua RD., Futian, Shenzhen, China





4D SYSTEMS

TURNING TECHNOLOGY INTO ART

4.3" Display Bezel

4DBEZEL-43-(B/W)

For 4DLCD-FT843 Display

Document Date: 12th December 2013

Document Revision: 1.2

Contents

1. Description.....	3
2. Features	3
3. Assembly of the 4DLCD-FT843 onto the Bezel and on to the Panel.....	4
4. Mechanical Dimensions	5
5. Legal Notice	6
6. Contact Information.....	6

1. Description

The 4D Systems 4.3" Display Bezel is a plastic bezel for the 4DLCD-FT843 display.

This bezel provides a sleek cover to the 4DLCD-FT843 display, and also providing an easy method to panel mount the display into an enclosure. The bezel mounts the display, while also providing a mounting solution into a panel, keeping all securely together.

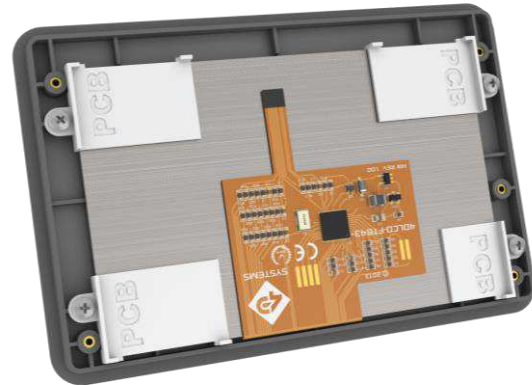
Spring clips attach to the bezel in four locations, and hold it tightly to the enclosure/wall panel, offering a range of panel thickness from 1mm to 2.5mm without the need to add washers. If a panel thicker than 2.5mm is required, washers can be placed under the spring clip, however this is not recommended practice.

Please Note, this bezel is only designed for indoor use. It is not weather tight, nor does it offer any IP rating. It should only be used indoors in clean environments as it offers little protection to the circuitry of moisture or particles.

Bezels are available in Black or White.

2. Features

- Plastic 4.3" Bezel designed for panel mounting the 4DLCD-FT843
- Simple cut-out required, no mounting holes requires to be drilled in the panel
- Brass mounting inserts in the rear of the bezel
- 4x Spring Clips for attaching the bezel to the panel
- 8x M2 mounting screws and washers included



4DLCD-FT843 Mounted in 4.3" Bezel - Back



Bare 4.3" Bezel - Front



4DLCD-FT843 Mounted in 4.3" Bezel - Front



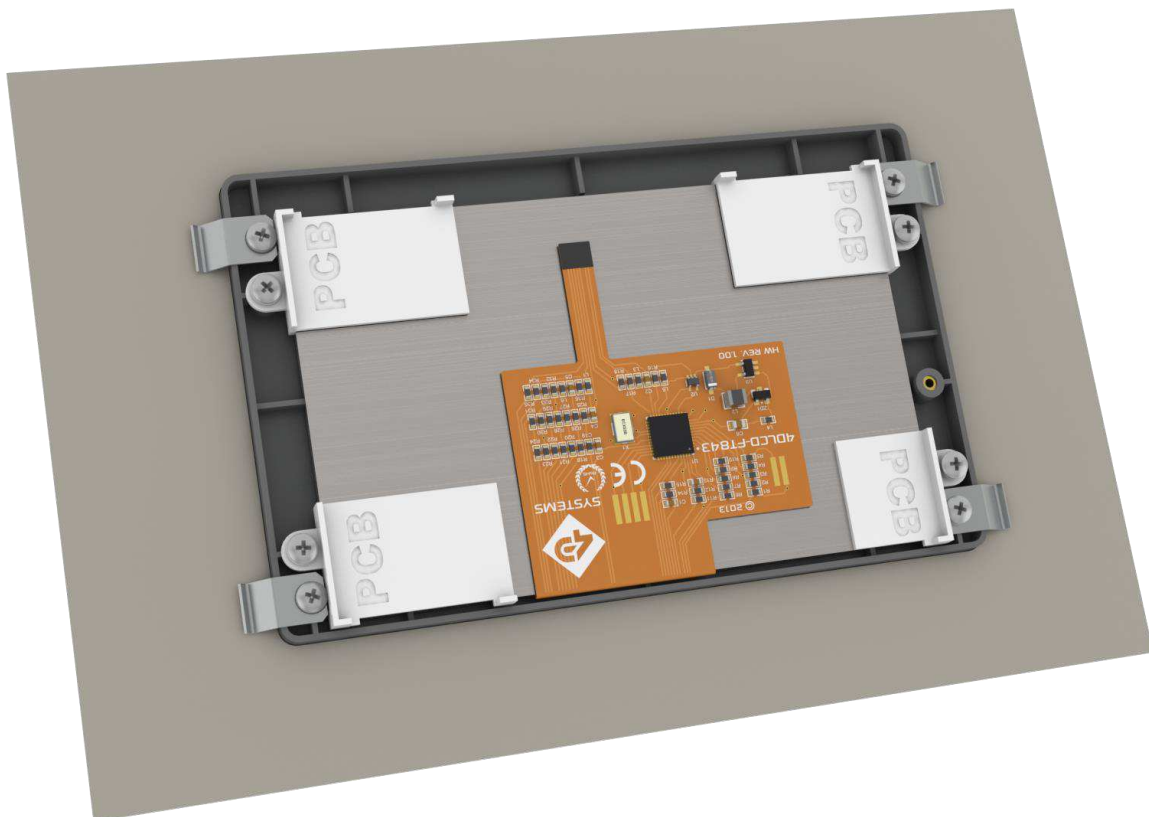
Bare 4.3" Bezel - Back



Spring Clips

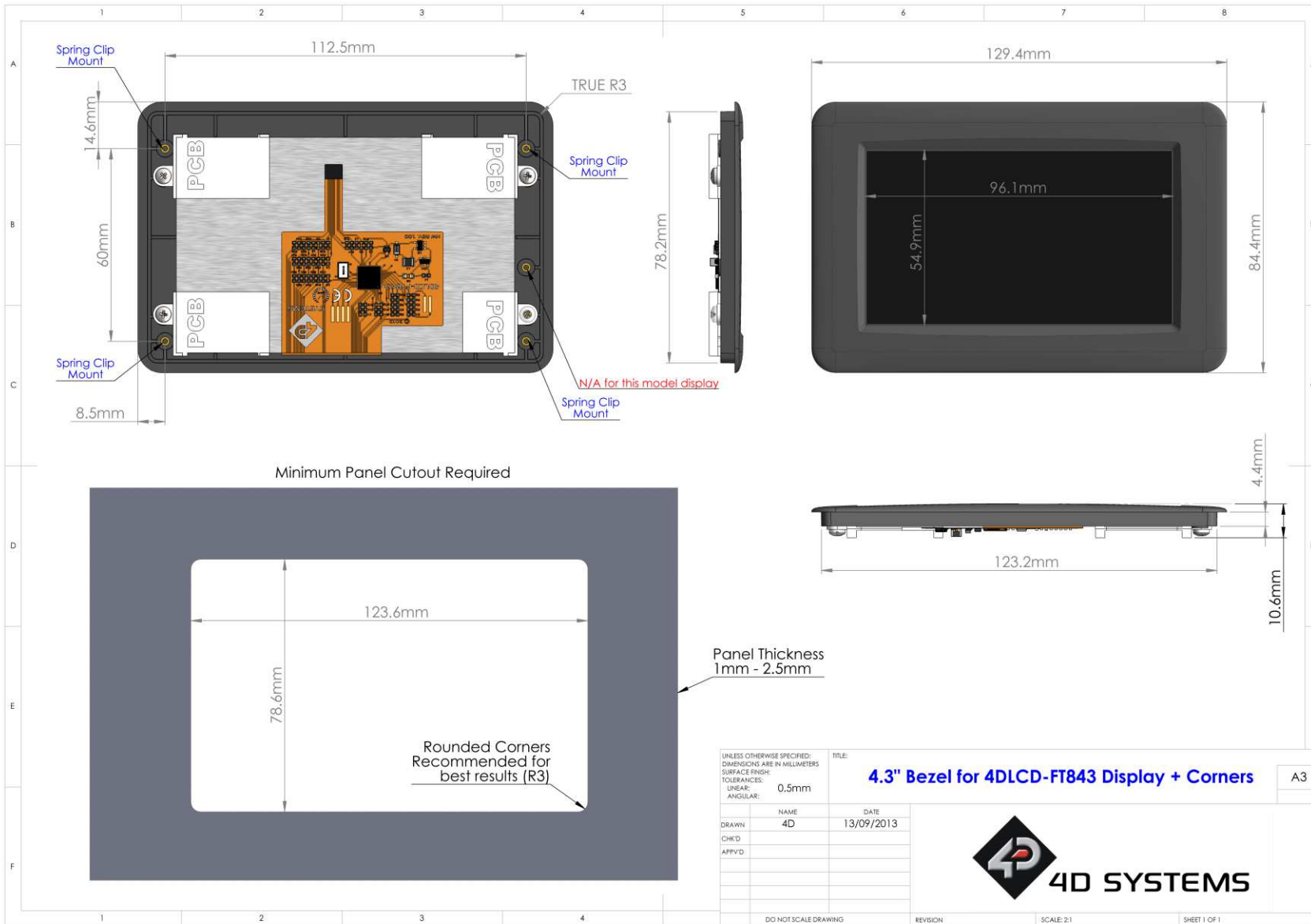
3. Assembly of the 4DLCD-FT843 onto the Bezel and on to the Panel

- 1) Attach the four plastic corner plates to the back of the display, where the indent 'PCB' lettering is facing upwards. Note the short corner plate goes on the bottom right corner as depicted in the image below.
- 2) Place the 4DLCD-FT843 with corner plates attached face down into the bezel, taking care of the orientation of the display so the mounting tabs of the corner plates line up with the brass inserts in the bezel.
- 3) Insert 4 of the screws with 4 of the washers into the mounting tabs to secure the display on the bezel. Nip the screws up but take care not to over tighten or damage may be done to the bezel.
- 4) Place the assembled bezel into the Panel/Enclosure, taking note of the orientation of the display.
- 5) Place a washer on one of the remaining screws, followed by a spring clip, and attach to one of the brass inserted holes on the bezel, allowing the spring clip to work against the panel, holding the bezel firmly in place.
- 6) Repeat for the remaining screws.
- 7) The bezel should now be securely fitted to the panel, and the 4DLCD-FT843 should be securely fitted to the bezel.
- 8) Customers' application board can then be mounted to the corner plates or directly onto the back of the LCD, and attach to the flex of the 4DLCD-FT843.



4DLCD-FT843 secured to the 4.3" Bezel, and Bezel secured to the Panel/Enclosure using the four spring clips

4. Mechanical Dimensions



ORDERING INFORMATION

Order Code:

4DBEZEL-43-B (Black Version)

4DBEZEL-43-W (White Version)

Packaging: Module sealed in antistatic foam padded 4D Systems Box

5. Legal Notice

Proprietary Information

The information contained in this document is the property of 4D Systems Pty. Ltd. and may be the subject of patents pending or granted, and must not be copied or disclosed without prior written permission.

4D Systems endeavours to ensure that the information in this document is correct and fairly stated but does not accept liability for any error or omission. The development of 4D Systems products and services is continuous and published information may not be up to date. It is important to check the current position with 4D Systems. 4D Systems reserves the right to modify, update or make changes to Specifications or written material without prior notice at any time.

All trademarks belong to their respective owners and are recognised and acknowledged.

Disclaimer of Warranties & Limitation of Liability

4D Systems makes no warranty, either expressed or implied with respect to any product, and specifically disclaims all other warranties, including, without limitation, warranties for merchantability, non-infringement and fitness for any particular purpose.

Information contained in this publication regarding device applications and the like is provided only for your convenience and may be superseded by updates. It is your responsibility to ensure that your application meets with your specifications.

Images and graphics used throughout this document are for illustrative purposes only. All images and graphics used are possible to be displayed on the 4D Systems range of products, however the quality may vary.

In no event shall 4D Systems be liable to the buyer or to any third party for any indirect, incidental, special, consequential, punitive or exemplary damages (including without limitation lost profits, lost savings, or loss of business opportunity) arising out of or relating to any product or service provided or to be provided by 4D Systems, or the use or inability to use the same, even if 4D Systems has been advised of the possibility of such damages.

4D Systems products are not fault tolerant nor designed, manufactured or intended for use or resale as on line control equipment in hazardous environments requiring fail – safe performance, such as in the operation of nuclear facilities, aircraft navigation or communication systems, air traffic control, direct life support machines or weapons systems in which the failure of the product could lead directly to death, personal injury or severe physical or environmental damage ('High Risk Activities'). 4D Systems and its suppliers specifically disclaim any expressed or implied warranty of fitness for High Risk Activities.

Use of 4D Systems' products and devices in 'High Risk Activities' and in any other application is entirely at the buyer's risk, and the buyer agrees to defend, indemnify and hold harmless 4D Systems from any and all damages, claims, suits, or expenses resulting from such use. No licenses are conveyed, implicitly or otherwise, under any 4D Systems intellectual property rights.

6. Contact Information

For Technical Support: support@4dsystems.com.au

For Sales Support: sales@4dsystems.com.au

Website: www.4dsystems.com.au

Copyright 4D Systems Pty. Ltd. 2000-2014.