



Chipsmall Limited consists of a professional team with an average of over 10 year of expertise in the distribution of electronic components. Based in Hongkong, we have already established firm and mutual-benefit business relationships with customers from,Europe,America and south Asia,supplying obsolete and hard-to-find components to meet their specific needs.

With the principle of “Quality Parts,Customers Priority,Honest Operation,and Considerate Service”,our business mainly focus on the distribution of electronic components. Line cards we deal with include Microchip,ALPS,ROHM,Xilinx,Pulse,ON,Everlight and Freescale. Main products comprise IC,Modules,Potentiometer,IC Socket,Relay,Connector.Our parts cover such applications as commercial,industrial, and automotives areas.

We are looking forward to setting up business relationship with you and hope to provide you with the best service and solution. Let us make a better world for our industry!



## Contact us

Tel: +86-755-8981 8866 Fax: +86-755-8427 6832

Email & Skype: info@chipsmall.com Web: www.chipsmall.com

Address: A1208, Overseas Decoration Building, #122 Zhenhua RD., Futian, Shenzhen, China



## 5000W, 16V - 100V Surface Mount Transient Voltage Suppressor

### FEATURES

- 5000 watts peak pulse power capability at 10/1000 $\mu$ s waveform
- Ideal for automated placement
- Photo glass passivated junction
- Excellent clamping capability
- Fast response time: Typically less than 1.0ps
- Compliant to RoHS Directive 2011/65/EU and in accordance to WEEE 2002/96/EC
- Halogen-free according to IEC 61249-2-21

### APPLICATIONS

- I/O interface
- AC/DC power supply
- Automotive

### MECHANICAL DATA

- Case: DO-214AB (SMC)
- Molding compound meets UL 94V-0 flammability rating
- Part no. with suffix "H" means AEC-Q101 qualified
- Packing code with suffix "G" means green compound (halogen-free)
- Moisture sensitivity level: level 1, per J-STD-020
- Terminal: Matte tin plated leads, solderable per J-STD-002
- Meet JESD 201 class 2 whisker test
- Polarity: As marked
- Weight: 0.30 g (approximately)

KEY PARAMETERS		
PARAMETER	VALUE	UNIT
$V_{WM}$	16 - 100	V
$V_{BR}$ (uni-directional)	17.8 - 123	V
$P_{PPSM}$	5000	W
$T_{JMAX}$	175	$^{\circ}C$
Package	DO-214AB (SMC)	
Configuration	Stacked die	


**DO-214AB (SMC)**

ABSOLUTE MAXIMUM RATINGS ( $T_A = 25^{\circ}C$ unless otherwise noted)			
PARAMETER	SYMBOL	VALUE	UNIT
Non-repetitive peak impulse power dissipation with 10/1000 $\mu$ s waveform <sup>(1)</sup>	$P_{PPSM}$	5000	W
Steady state power dissipation at $T_L=75^{\circ}C$ <sup>(2)</sup>	$P_{tot}$	6.25	W
Forward Voltage @ $I_F=100A$ for Uni-directional only <sup>(3)</sup>	$V_F$	5	V
Junction temperature	$T_J$	-55 to +175	$^{\circ}C$
Storage temperature	$T_{STG}$	-55 to +175	$^{\circ}C$

#### Notes:

1. Non-repetitive Current Pulse Per Fig. 3 and derated above  $T_A=25^{\circ}C$  Per Fig. 1
2. Units mounted on recommended PCB (16mm x 16mm Cu pad test board)
3. Pulse test with  $PW=0.3$  ms

THERMAL PERFORMANCE			
PARAMETER	SYMBOL	LIMIT	UNIT
Junction-to-lead thermal resistance per diode	$R_{\theta JL}$	16	$^{\circ}C/W$
Junction-to-ambient thermal resistance per diode	$R_{\theta JA}$	61	$^{\circ}C/W$
Junction-to-case thermal resistance per diode	$R_{\theta JC}$	17	$^{\circ}C/W$

**Thermal Performance Note:** Units mounted on recommended PCB (16mm x 16mm Cu pad test board)

<b>ELECTRICAL SPECIFICATIONS</b> ( $T_A = 25^\circ\text{C}$ unless otherwise noted)									
Part number	Marking code	Breakdown voltage $V_{BR}@I_T$ (V) (Note 1)		Test current $I_T$ (mA)	Working stand-off voltage $V_{WM}$ (V)	Maximum blocking leakage current $I_{IB}@V_{WM}$ ( $\mu\text{A}$ ) (Note 1)	Maximum peak impulse current $I_{PP}$ (A)	Maximum clamping voltage $V_C@I_{PP}$ (V)	Maximum Temp. coefficient of $V_{BR}$ of $V_{BR}@I_T$ ( $\text{mV}/^\circ\text{C}$ )
		Min.	Max.						
5.0SMDJ16A	5PET	17.8	19.7	1	16	50	193	26.0	0.096
5.0SMDJ17A	5PEU	18.9	20.9	1	17	20	181	27.6	0.097
5.0SMDJ18A	5PEV	20.0	22.1	1	18	10	172	29.2	0.098
5.0SMDJ20A	5PEW	22.2	24.5	1	20	5	155	32.4	0.099
5.0SMDJ22A	5PEX	24.4	26.9	1	22	5	141	35.5	0.100
5.0SMDJ24A	5PEZ	26.7	29.5	1	24	2	129	38.9	0.101
5.0SMDJ26A	5PFE	28.9	31.9	1	26	2	119	42.1	0.101
5.0SMDJ28A	5PFG	31.1	34.4	1	28	2	110	45.4	0.102
5.0SMDJ30A	5PFK	33.3	36.8	1	30	2	103	48.4	0.103
5.0SMDJ33A	5PFM	36.7	40.6	1	33	2	93.9	53.3	0.104
5.0SMDJ36A	5PFP	40.0	44.2	1	36	2	86.1	58.1	0.104
5.0SMDJ40A	5PFR	44.4	49.1	1	40	2	77.6	64.5	0.105
5.0SMDJ43A	5PFT	47.8	52.8	1	43	2	72.1	69.4	0.105
5.0SMDJ45A	5PFV	50.0	55.3	1	45	2	68.8	72.7	0.106
5.0SMDJ48A	5PFX	53.3	58.9	1	48	2	64.7	77.4	0.106
5.0SMDJ51A	5PFZ	56.7	62.7	1	51	2	60.7	82.4	0.107
5.0SMDJ54A	5PGE	60.0	66.3	1	54	2	57.5	87.1	0.107
5.0SMDJ58A	5PGG	64.4	71.2	1	58	2	53.5	93.6	0.107
5.0SMDJ60A	5PGK	66.7	73.7	1	60	2	51.7	96.8	0.108
5.0SMDJ64A	5PGM	71.1	78.6	1	64	2	48.6	103	0.108
5.0SMDJ70A	5PGP	77.8	86.0	1	70	2	44.3	113	0.108
5.0SMDJ75A	5PGR	83.3	92.1	1	75	2	41.4	121	0.108
5.0SMDJ78A	5PGT	86.7	95.8	1	78	2	39.7	126	0.108
5.0SMDJ85A	5PGV	94.4	104	1	85	2	36.5	137	0.110
5.0SMDJ90A	5PGX	100	111	1	90	2	34.3	146	0.110
5.0SMDJ100A	5PGZ	111	123	1	100	2	30.9	162	0.110

**Note:**

1. Pulse test with  $PW=30$  ms

<b>ORDERING INFORMATION</b>					
<b>PART NO.</b>	<b>PART NO. SUFFIX</b>	<b>PACKING CODE</b>	<b>PACKING CODE SUFFIX</b>	<b>PACKAGE</b>	<b>PACKING</b>
5.0SMDJxxA (Note 1, 2)	H	R7	G	SMC	850 / 7" Plastic reel
		R6			3,000 / 13" Paper reel
		M6			3,000 / 13" Plastic reel

**Notes :**

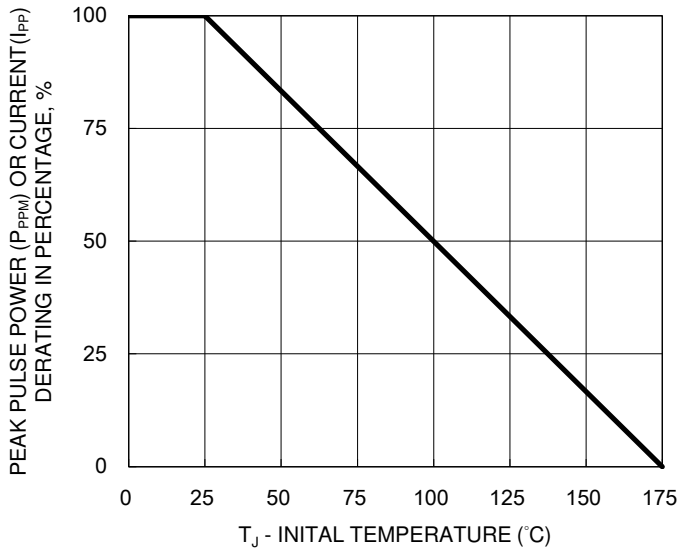
1. "xx" defines voltage from 16V (5.0SMDJ16A) to 100V (5.0SMDJ100A)
2. Whole series with green compound (halogen-free)

<b>EXAMPLE</b>					
<b>EXAMPLE P/N</b>	<b>PART NO.</b>	<b>PART NO. SUFFIX</b>	<b>PACKING CODE</b>	<b>PACKING CODE SUFFIX</b>	<b>DESCRIPTION</b>
5.0SMDJ16AHR7G	5.0SMDJ16A	H	R7	G	AEC-Q101 qualified Green compound

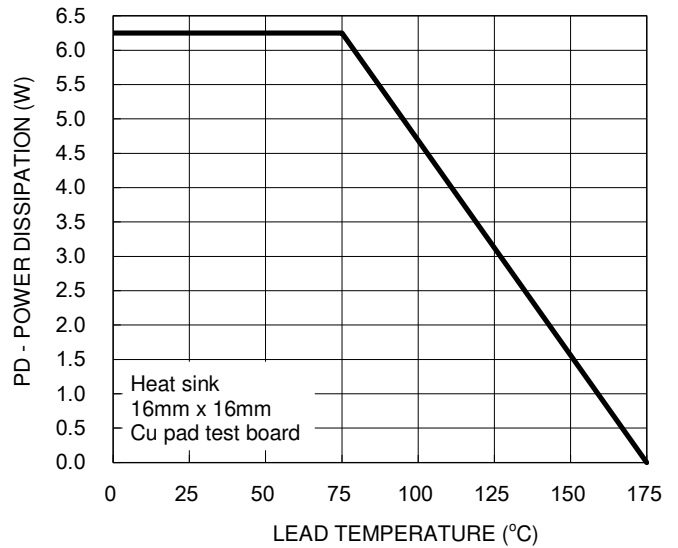
**CHARACTERISTICS CURVES**

( $T_A = 25^\circ\text{C}$  unless otherwise noted)

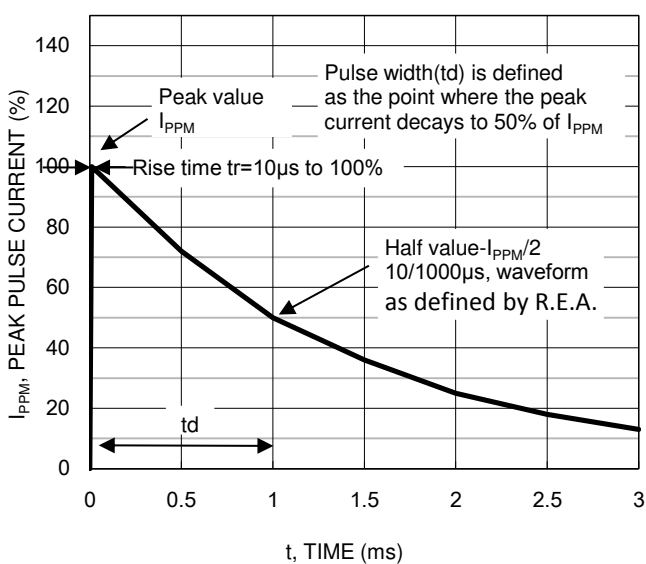
**Fig.1 Pulse Power or Current vs. Initial Junction Temperature**



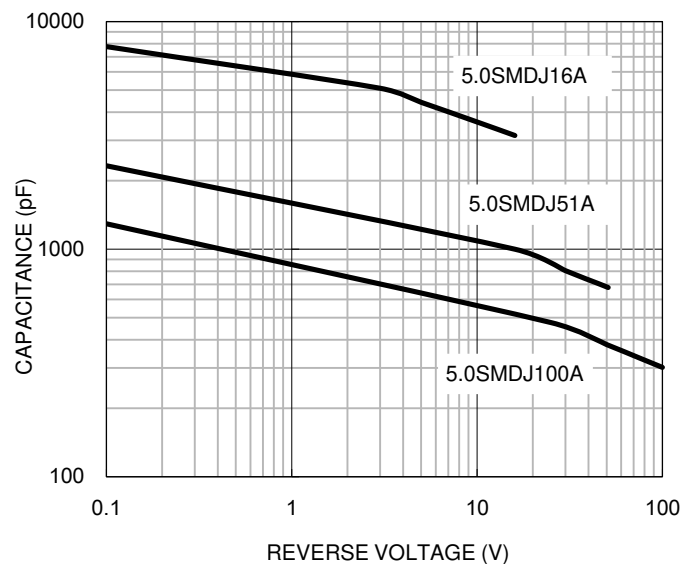
**Fig.2 Power Derating Curve**



**Fig.3 Pulse Waveform**

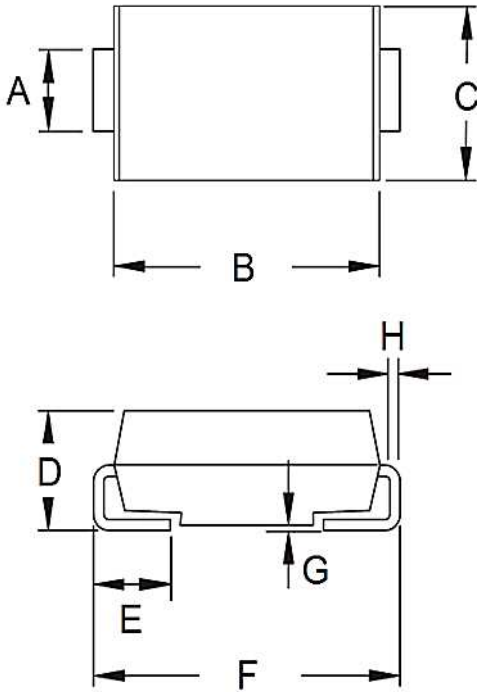


**Fig.4 Typical Junction Capacitance**



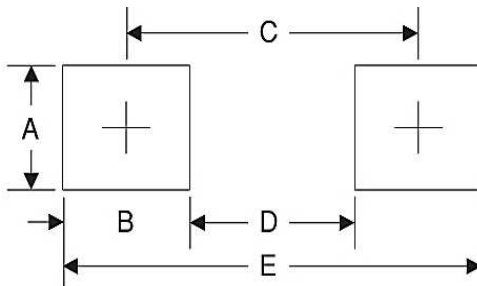
**PACKAGE OUTLINE DIMENSIONS**

DO-214AB (SMC)



DIM.	Unit (mm)		Unit (inch)	
	Min	Max	Min	Max
A	2.90	3.20	0.114	0.126
B	6.60	7.11	0.260	0.280
C	5.59	6.22	0.220	0.245
D	2.00	2.62	0.079	0.103
E	1.00	1.60	0.039	0.063
F	7.75	8.13	0.305	0.320
G	0.10	0.20	0.004	0.008
H	0.15	0.31	0.006	0.012

**SUGGESTED PAD LAYOUT**



Symbol	Unit (mm)	Unit (inch)
A	3.30	0.130
B	2.50	0.098
C	6.80	0.268
D	4.40	0.173
E	9.40	0.370

**MARKING DIAGRAM**



- P/N = Marking Code
- G = Green compound
- YW = Date Code
- F = Factory Code

## Notice

Specifications of the products displayed herein are subject to change without notice. TSC or anyone on its behalf, assumes no responsibility or liability for any errors or inaccuracies.

Information contained herein is intended to provide a product description only. No license, express or implied, to any intellectual property rights is granted by this document. Except as provided in TSC's terms and conditions of sale for such products, TSC assumes no liability whatsoever, and disclaims any express or implied warranty, relating to sale and/or use of TSC products including liability or warranties relating to fitness for a particular purpose, merchantability, or infringement of any patent, copyright, or other intellectual property right.

The products shown herein are not designed for use in medical, life-saving, or life-sustaining applications. Customers using or selling these products for use in such applications do so at their own risk and agree to fully indemnify TSC for any damages resulting from such improper use or sale.