



Chipsmall Limited consists of a professional team with an average of over 10 year of expertise in the distribution of electronic components. Based in Hongkong, we have already established firm and mutual-benefit business relationships with customers from,Europe,America and south Asia,supplying obsolete and hard-to-find components to meet their specific needs.

With the principle of “Quality Parts,Customers Priority,Honest Operation,and Considerate Service”,our business mainly focus on the distribution of electronic components. Line cards we deal with include Microchip,ALPS,ROHM,Xilinx,Pulse,ON,Everlight and Freescale. Main products comprise IC,Modules,Potentiometer,IC Socket,Relay,Connector.Our parts cover such applications as commercial,industrial, and automotives areas.

We are looking forward to setting up business relationship with you and hope to provide you with the best service and solution. Let us make a better world for our industry!



## Contact us

Tel: +86-755-8981 8866 Fax: +86-755-8427 6832

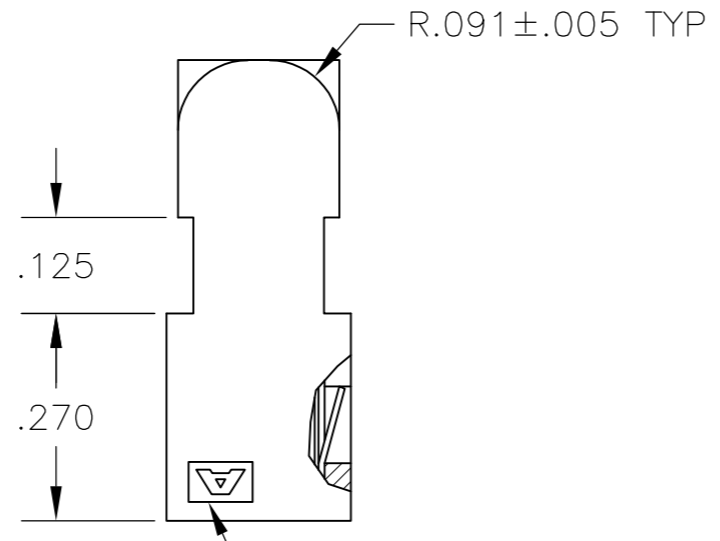
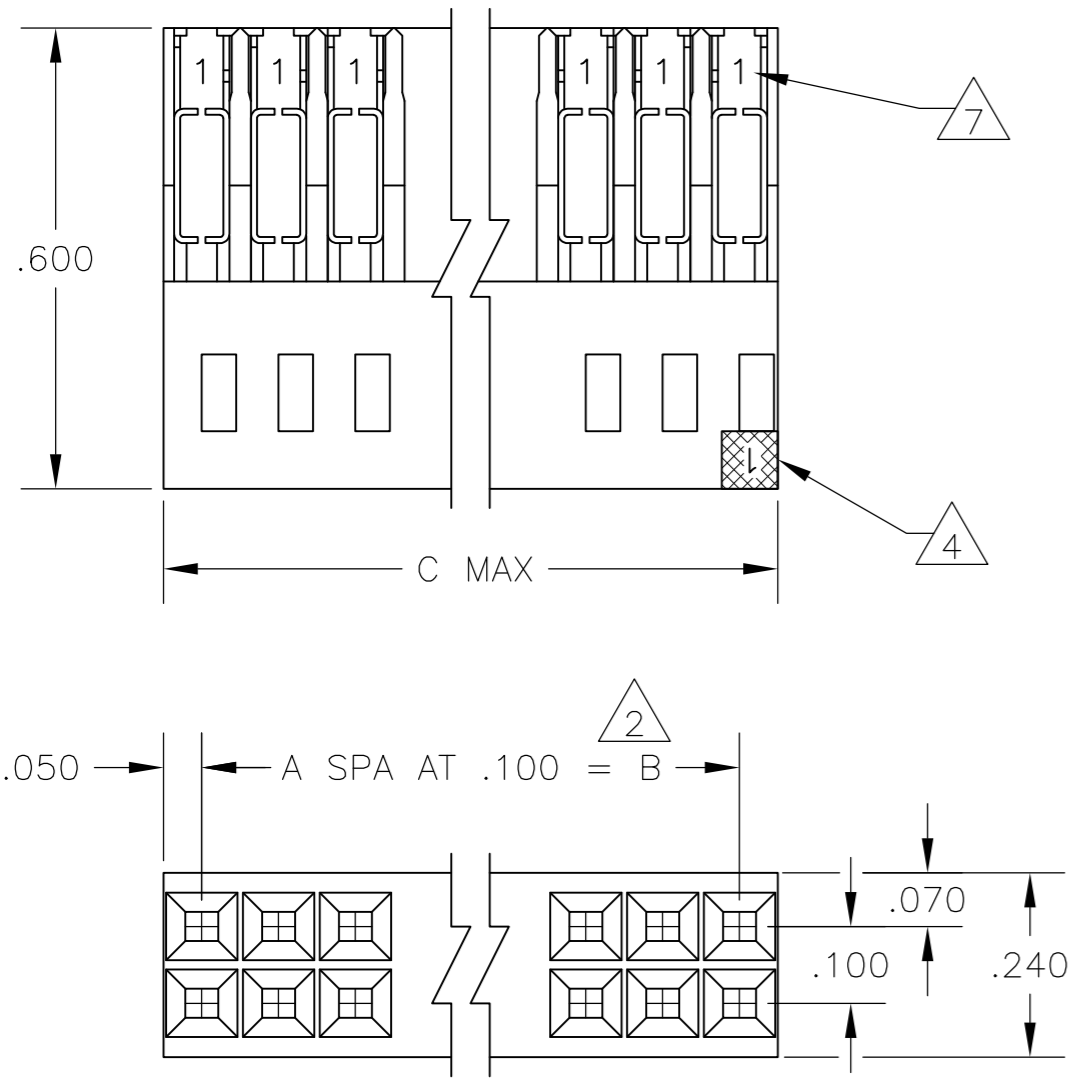
Email & Skype: info@chipsmall.com Web: www.chipsmall.com

Address: A1208, Overseas Decoration Building, #122 Zhenhua RD., Futian, Shenzhen, China



THIS DRAWING IS UNPUBLISHED. RELEASED FOR PUBLICATION  
 © COPYRIGHT - By - ALL RIGHTS RESERVED.

LOC	DIST	REVISIONS					
AD	00	P	LTR	DESCRIPTION	DATE	DWN	APVD
		S2		REVISED PER ECO-11-004587	11MAR11	RK	HMR



	3.200	3.100	31	64	3	9	8-102393-0
9	OBSOLETE	3.000	2.900	29	60	3	7-102393-8
9	OBSOLETE	2.700	2.600	26	54	3	7-102393-5
	2.500	2.400	24	50	3	7-102393-3	
	2.000	1.900	19	40	3	6-102393-8	
9	OBSOLETE	1.700	1.600	16	34	3	6-102393-5
9	OBSOLETE	1.600	1.500	15	32	3	6-102393-4
9	OBSOLETE	1.500	1.400	14	30	3	6-102393-3
9	OBSOLETE	1.400	1.300	13	28	3	6-102393-2
	1.300	1.200	12	26	3	6-102393-1	
9	OBSOLETE	1.200	1.100	11	24	3	6-102393-0
9	OBSOLETE	1.100	1.000	10	22	3	5-102393-9
	1.000	.900	9	20	3	5-102393-8	
	.900	.800	8	18	3	5-102393-7	
	.800	.700	7	16	3	5-102393-6	
	.700	.600	6	14	3	5-102393-5	
	.600	.500	5	12	3	5-102393-4	
	.500	.400	4	10	3	5-102393-3	
	.400	.300	3	8	3	5-102393-2	
	.300	.200	2	6	3	5-102393-1	
	C	B	A	NO OF POS	ASSEMBLY PART NUMBER		

SUPERSEDED	3.600	3.500	35	72	3	102393-4	
	3.500	3.400	34	70	3	102393-3	
	3.400	3.300	33	68	3	102393-2	
	3.300	3.200	32	66	3	102393-1	
SUPERSEDED	3.200	3.100	31	64	3	102393-0	
SUPERSEDED	3.100	3.000	30	62	2	102393-9	
	3.000	2.900	29	60	2	102393-8	
SUPERSEDED	2.900	2.800	28	58	2	102393-7	
SUPERSEDED	2.800	2.700	27	56	2	102393-6	
9	OBSOLETE	2.700	2.600	26	54	2	102393-5
SUPERSEDED	2.600	2.500	25	52	2	102393-4	
	2.500	2.400	24	50	2	102393-3	
SUPERSEDED	2.400	2.300	23	48	2	102393-2	
	2.300	2.200	22	46	2	102393-1	
	2.200	2.100	21	44	2	102393-0	
	2.100	2.000	20	42	1	102393-9	
	2.000	1.900	19	40	1	102393-8	
SUPERSEDED	1.900	1.800	18	38	1	102393-7	
SUPERSEDED	1.800	1.700	17	36	1	102393-6	
9	OBSOLETE	1.700	1.600	16	34	1	102393-5
9	OBSOLETE	1.600	1.500	15	32	1	102393-4
9	OBSOLETE	1.500	1.400	14	30	1	102393-3
9	OBSOLETE	1.400	1.300	13	28	1	102393-2
	1.300	1.200	12	26	1	102393-1	
9	SUPERSEDED	1.200	1.100	11	24	1	102393-0
9	OBSOLETE	1.100	1.000	10	22	1	102393-9
	1.000	.900	9	20	1	102393-8	
	.900	.800	8	18	1	102393-7	
	.800	.700	7	16	1	102393-6	
	.700	.600	6	14	1	102393-5	
	.600	.500	5	12	1	102393-4	
	.500	.400	4	10	1	102393-3	
9	SUPERSEDED	.400	.300	3	8	1	102393-2
	.300	.200	2	6	1	102393-1	
	C	B	A	NO OF POSN	ASSEMBLY PART NUMBER		

- 1 .000030 GOLD IN THE CONTACT AREA, .000050-.000100 TIN-LEAD IN THE TERMINATION AREA, ALL OVER .000050 NICKEL.
- 2 TOLERANCE NON-CUMULATIVE.
- 3 .000030 GOLD IN THE CONTACT AREA, .000050-.000100 TIN IN THE TERMINATION AREA, ALL OVER .000050 NICKEL.
- 4 MOLDED CIRCUIT #1 IDENTIFIER IN LOCATION SHOWN.
- 5 OBSOLETE PART NUMBER
- 6 USE WITH 26-30 AWG WIRE SIZE, .050 MAX INSULATION DIA., .015 MAX INSULATION WALL THICKNESS.
- 7 CONTACT IDENTIFICATION NUMBER "1" LOCATED IN THIS AREA.
- 8 AMP TRADEMARK (EITHER SIDE).
- 9 OBSOLETE PARTS: OBSOLETE CIS STREAMLINING PER D.RENAUD/D.SINISI

THIS DRAWING IS A CONTROLLED DOCUMENT.

DWN	L.D.RINGLEY	7-1-85
CHK	P.C.deJONG	7-1-85
APVD	P.C.deJONG	7-1-85

TE Connectivity

ASSEMBLY, MASS TERMINATION, AMPMODU, DOUBLE ROW, .100 X .100 CL, #26-#30 AWG WIRE SIZE

SCALE 4:1 SHEET 1 of 1 REV S2