



Chipsmall Limited consists of a professional team with an average of over 10 year of expertise in the distribution of electronic components. Based in Hongkong, we have already established firm and mutual-benefit business relationships with customers from,Europe,America and south Asia,supplying obsolete and hard-to-find components to meet their specific needs.

With the principle of "Quality Parts,Customers Priority,Honest Operation,and Considerate Service",our business mainly focus on the distribution of electronic components. Line cards we deal with include Microchip,ALPS,ROHM,Xilinx,Pulse,ON,Everlight and Freescale. Main products comprise IC,Modules,Potentiometer,IC Socket,Relay,Connector.Our parts cover such applications as commercial,industrial, and automotives areas.

We are looking forward to setting up business relationship with you and hope to provide you with the best service and solution. Let us make a better world for our industry!



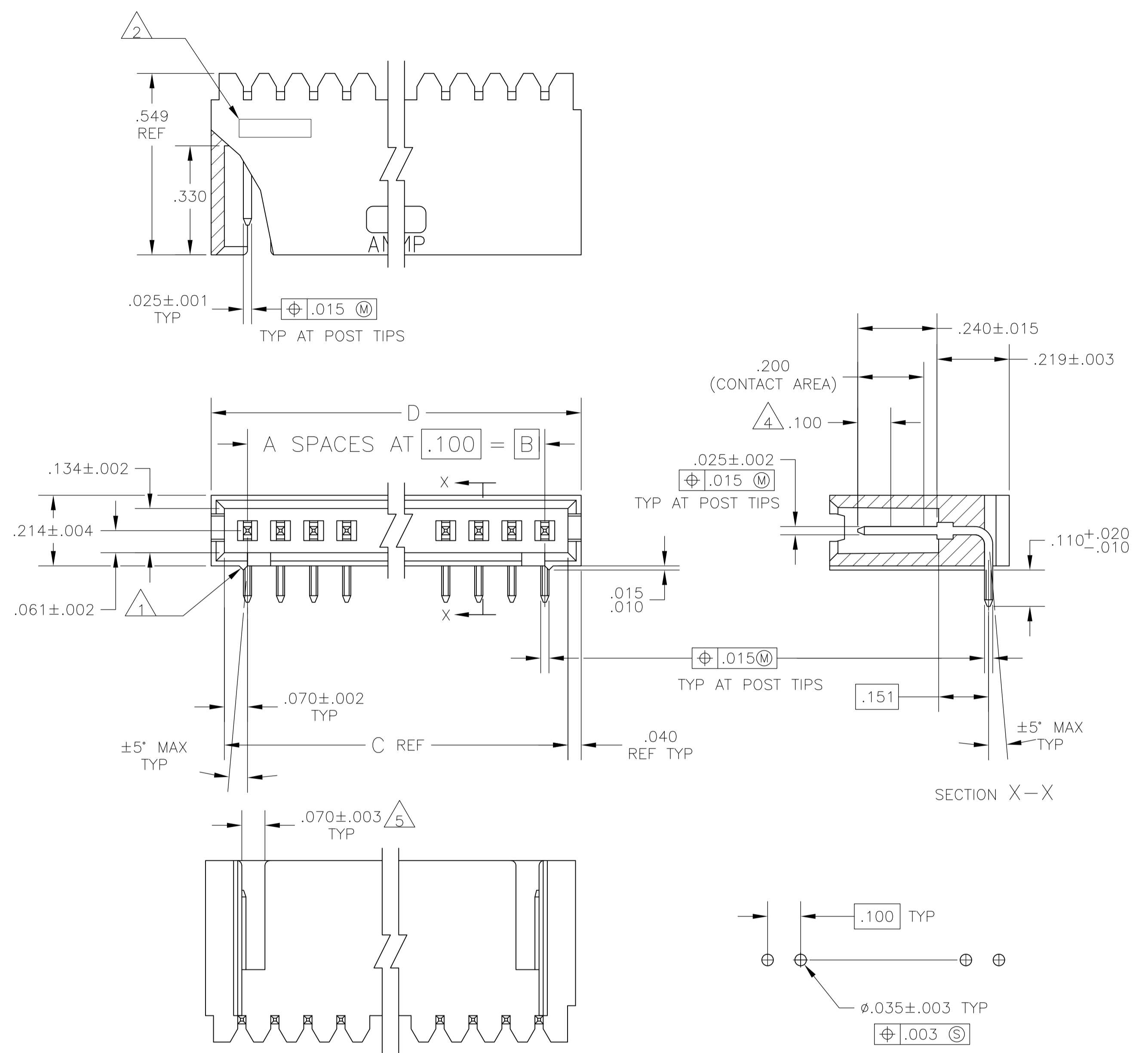
Contact us

Tel: +86-755-8981 8866 Fax: +86-755-8427 6832

Email & Skype: info@chipsmall.com Web: www.chipsmall.com

Address: A1208, Overseas Decoration Building, #122 Zhenhua RD., Futian, Shenzhen, China





RECOMMENDED HOLE LAYOUT

- 1 STANDOFFS:
3 TRHU 9 POSN - (2 REQD) ON OUTSIDE ENDS OF HOUSING
10 THRU 18 POSN - (3 REQD) TWO ON OUTSIDE ENDS AND ONE CENTERED ON HOUSING
19 POSN AND LARGER - (4 REQD) TWO ON OUTSIDE ENDS AND TWO EVENLY SPACED WITHIN REMAINING LENGTH OF HOUSING
- 2 RECESSED DATE CODE
- 3 .000030 GOLD IN CONTACT AREA, .000100-.000200 MATTE TIN-LEAD IN SOLDER AREA, ALL OVER .000050 MIN NICKEL
- 4 POINT OF MEASUREMENT FOR GOLD PLATING THICKNESS
- 5 FOR 3 POS ONLY, ONE SLOT .215 WIDE.
- 6 .000030 GOLD IN CONTACT AREA, .000100-.000200 MATTE TIN IN SOLDER AREA, ALL OVER .000050 MIN NICKEL
- 7 OBSOLETE PARTS: OBSOLETE CIS STREAMLINING PER D.RENAUD/D.SINISI

PLATING	D	C	B	A	NO. OF POSN.	PART NO.		
△	OBSOLETE	△	2.620	2.540	2.400	24	25	-7-103361-3
△		△	2.520	2.440	2.300	23	24	7-103361-2
△	OBSOLETE	△	2.420	2.340	2.200	22	23	-7-103361-1
△		△	2.320	2.240	2.100	21	22	-7-103361-0
△		△	2.220	2.140	2.000	20	21	-6-103361-9
△		△	2.120	2.040	1.900	19	20	6-103361-8
△	OBSOLETE	△	2.020	1.940	1.800	18	19	-6-103361-7
△		△	1.920	1.840	1.700	17	18	-6-103361-6
△		△	1.820	1.740	1.600	16	17	-6-103361-5
△		△	1.720	1.640	1.500	15	16	6-103361-4
△	OBSOLETE	△	1.620	1.540	1.400	14	15	-6-103361-3
△		△	1.520	1.440	1.300	13	14	6-103361-2
△	OBSOLETE	△	1.420	1.340	1.200	12	13	-6-103361-1
△		△	1.320	1.240	1.100	11	12	6-103361-0
△	OBSOLETE	△	1.220	1.140	1.000	10	11	-5-103361-9
△		△	1.120	1.040	.900	9	10	5-103361-8
△		△	1.020	.940	.800	8	9	5-103361-7
△		△	.920	.840	.700	7	8	5-103361-6
△		△	.820	.740	.600	6	7	5-103361-5
△		△	.720	.640	.500	5	6	5-103361-4
△		△	.620	.540	.400	4	5	5-103361-3
△		△	.520	.440	.300	3	4	5-103361-2
△		△	.420	.340	.200	2	3	5-103361-1
△	OBSOLETE	△	3.720	3.640	3.500	35	36	3-103361-4
△	OBSOLETE	△	3.620	3.540	3.400	34	35	3-103361-3
△	OBSOLETE	△	3.520	3.440	3.300	33	34	3-103361-2
△	OBSOLETE	△	3.420	3.340	3.200	32	33	3-103361-1
△	OBSOLETE	△	3.320	3.240	3.100	31	32	3-103361-0
△	OBSOLETE	△	3.220	3.140	3.000	30	31	2-103361-9
△	OBSOLETE	△	3.120	3.040	2.900	29	30	2-103361-8
△	OBSOLETE	△	3.020	2.940	2.800	28	29	2-103361-7
△	OBSOLETE	△	2.920	2.840	2.700	27	28	2-103361-6
△	OBSOLETE	△	2.820	2.740	2.600	26	27	2-103361-5
△	OBSOLETE	△	2.720	2.640	2.500	25	26	2-103361-4
△	OBSOLETE	△	2.620	2.540	2.400	24	25	-2-103361-3
△		△	2.520	2.440	2.300	23	24	2-103361-2
△		△	2.420	2.340	2.200	22	23	-2-103361-1
△	OBSOLETE	△	2.320	2.240	2.100	21	22	-2-103361-0
△		△	2.220	2.140	2.000	20	21	-1-103361-9
△		△	2.120	2.040	1.900	19	20	1-103361-8
△	OBSOLETE	△	2.020	1.940	1.800	18	19	-1-103361-7
△		△	1.920	1.840	1.700	17	18	-1-103361-6
△		△	1.820	1.740	1.600	16	17	-1-103361-5
△		△	1.720	1.640	1.500	15	16	1-103361-4
△	OBSOLETE	△	1.620	1.540	1.400	14	15	-1-103361-3
△		△	1.520	1.440	1.300	13	14	1-103361-2
△		△	1.420	1.340	1.200	12	13	1-103361-1
△		△	1.320	1.240	1.100	11	12	1-103361-0
△	OBSOLETE	△	1.220	1.140	1.000	10	11	-103361-9
△		△	1.120	1.040	.900	9	10	103361-8
△		△	1.020	.940	.800	8	9	103361-7
△		△	.920	.840	.700	7	8	103361-6
△		△	.820	.740	.600	6	7	103361-5
△		△	.720	.640	.500	5	6	103361-4
△		△	.620	.540	.400	4	5	103361-3
△		△	.520	.440	.300	3	4	103361-2
△		△	.420	.340	.200	2	3	103361-1

THIS DRAWING IS A CONTROLLED DOCUMENT.

DIN: S.A. SHUEY 28SEP89
 CHK: H.MOLL 30CT89
 APVD: R.ELICKER 30CT89
 NAME: PRODUCT SPEC

TE Connectivity

HEADER ASSEMBLY, MOD II, SINGLE ROW .100 CL, RIGHT ANGLE

APPLICATION SPEC

SIZE: A1
 CAGE CODE: 00779
 DRAWING NO: 103361

RESTRICTED TO: CUSTOMER DRAWING

SCALE: 4:1 SHEET 1 OF 1 REV: N2