



Chipsmall Limited consists of a professional team with an average of over 10 year of expertise in the distribution of electronic components. Based in Hongkong, we have already established firm and mutual-benefit business relationships with customers from,Europe,America and south Asia,supplying obsolete and hard-to-find components to meet their specific needs.

With the principle of “Quality Parts,Customers Priority,Honest Operation,and Considerate Service”,our business mainly focus on the distribution of electronic components. Line cards we deal with include Microchip,ALPS,ROHM,Xilinx,Pulse,ON,Everlight and Freescale. Main products comprise IC,Modules,Potentiometer,IC Socket,Relay,Connector.Our parts cover such applications as commercial,industrial, and automotives areas.

We are looking forward to setting up business relationship with you and hope to provide you with the best service and solution. Let us make a better world for our industry!



Contact us

Tel: +86-755-8981 8866 Fax: +86-755-8427 6832

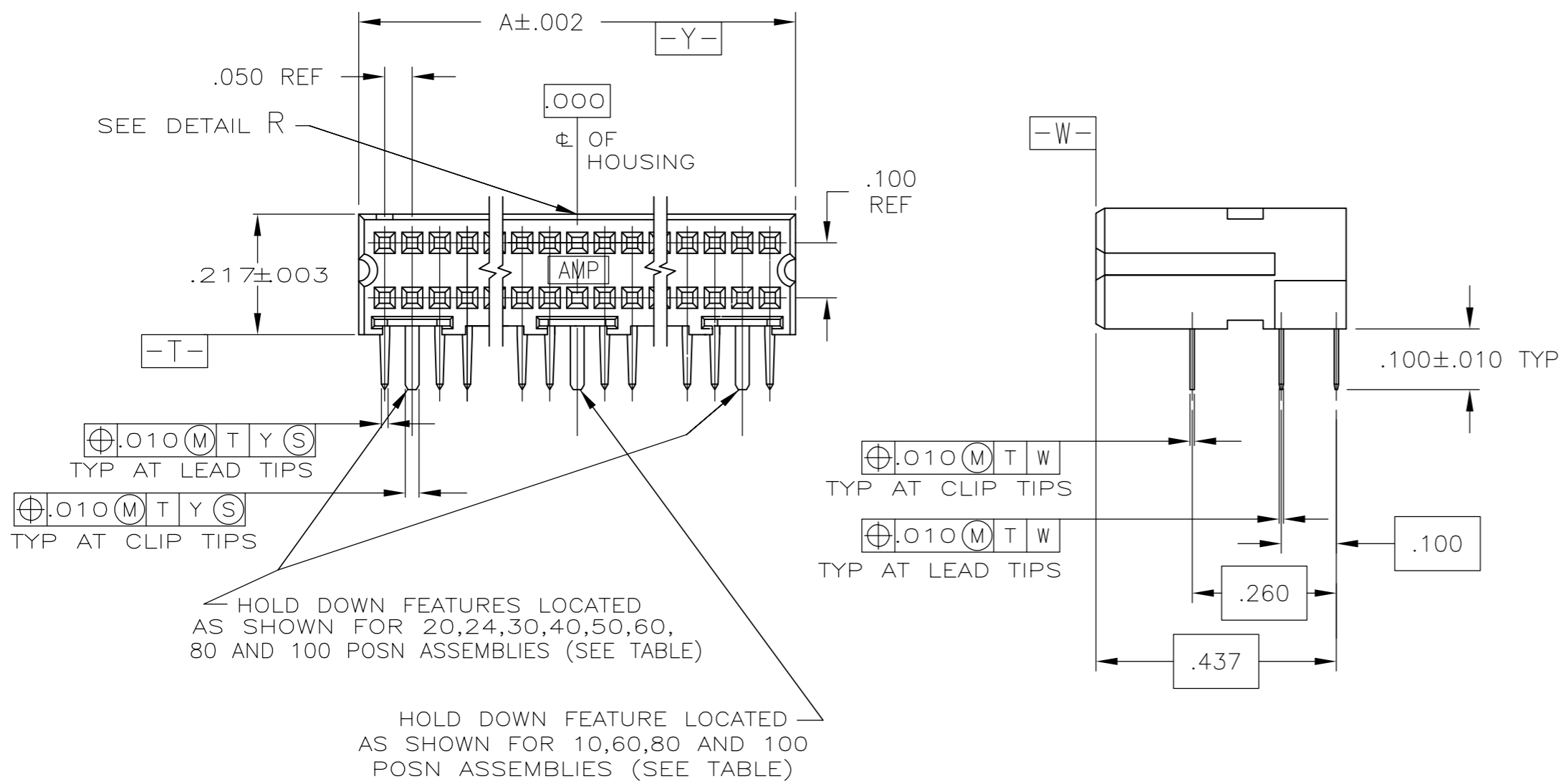
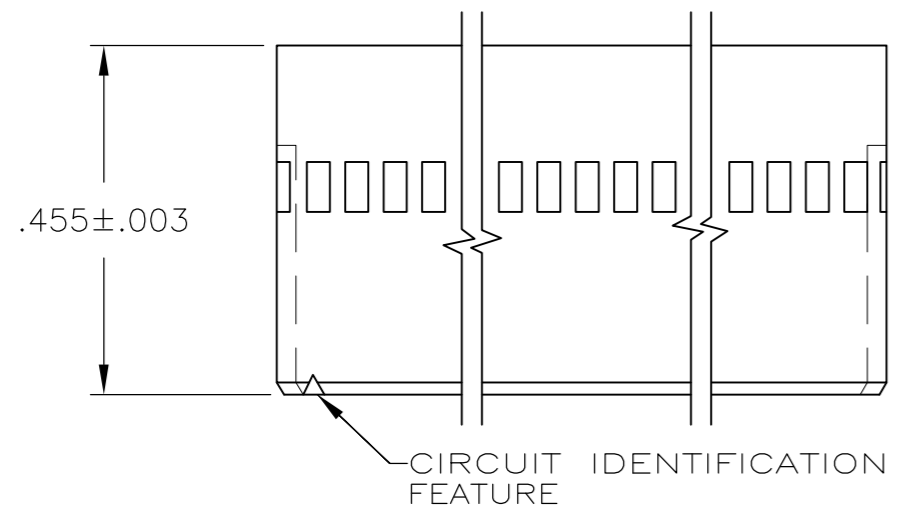
Email & Skype: info@chipsmall.com Web: www.chipsmall.com

Address: A1208, Overseas Decoration Building, #122 Zhenhua RD., Futian, Shenzhen, China

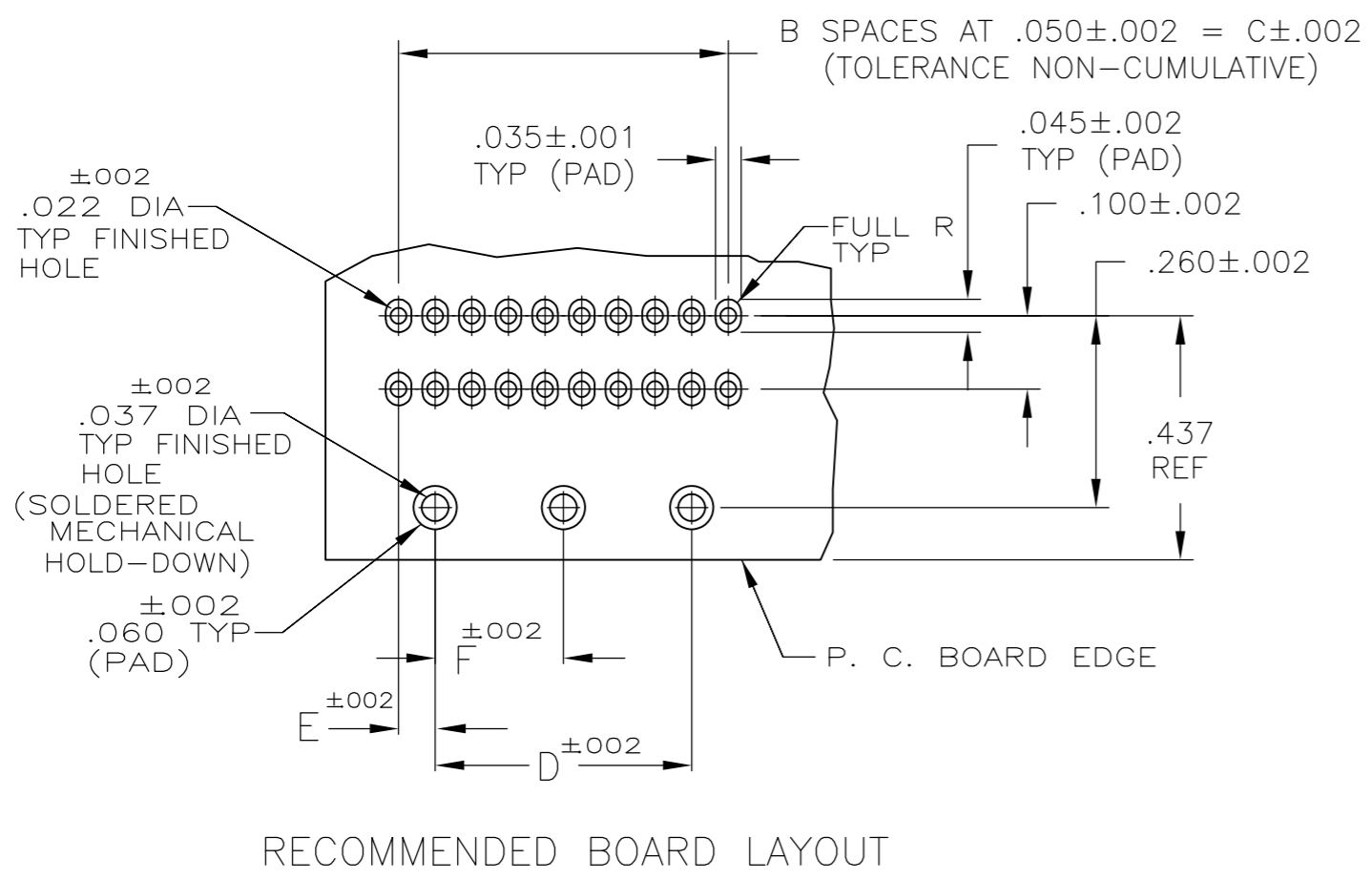
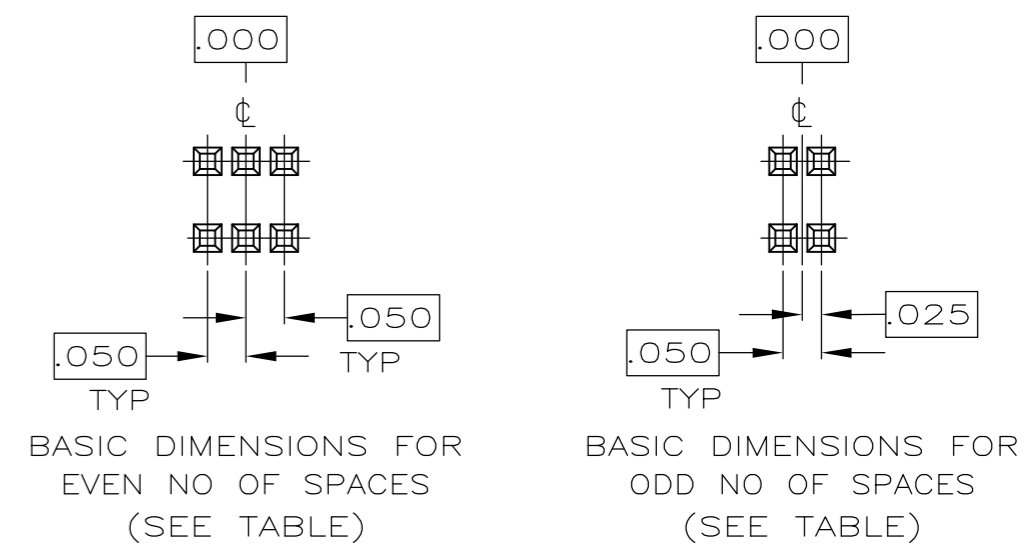


THIS DRAWING IS UNPUBLISHED. RELEASED FOR PUBLICATION
 © COPYRIGHT - By - ALL RIGHTS RESERVED.

LOC	DIST	REVISIONS					
		P	LTR	DESCRIPTION	DATE	DWN	APVD
AD	39	L2		REVISED PER ECO-11-004820	11MAR11	RK	HMR



- 1 CONTACT AREA PLATED WITH .000030 GOLD; SOLDER CLIPS AND LEADS PLATED WITH .000150 TIN-LEAD; ALL OVER .000050 NICKEL
- 2 POINT OF MEASUREMENT FOR GOLD THICKNESS IS .030 FROM MATING END OF CONTACT
- 3 HOUSING: THERMOPLASTIC, COLOR-BLACK. CONTACT: COPPER ALLOY. SOLDER CLIP: PHOSPHOR BRONZE
- 4 CONTACT AREA PLATED WITH .000030 GOLD; SOLDER CLIPS AND LEADS PLATED WITH .000150 TIN ALL OVER .000050 NICKEL
- 5 PRELIMINARY - NOT FOR PRODUCTION
- 6 ROHS 2002/95/EC COMPLIANT
- 7 OBSOLETE PARTS: OBSOLETE CIS STREAMLINING PER D.RENAUD/D.SINISI



FINISH	F	E	D	C	B	A	NO OF POSN	PART NUMBER
	1.175	.050	.450	.550	11	.644	24	5-103911-9
-.925	.050	.600	.700	14	.794	30	5-103911-8	
-.675	.050	.850	.950	19	1.044	40	5-103911-7	
-.437	.050	1.100	1.200	24	1.294	50	5-103911-6	
-.294	.050	1.350	1.450	29	1.544	60	5-103911-5	
-.150	.050	.350	.450	9	.544	20	5-103911-4	
-.100	.100	-.200	.200	4	.294	10	5-103911-3	
1.175	.050	.450	.550	11	.644	24	103911-9	
-.925	.050	.600	.700	14	.794	30	103911-8	
-.675	.050	.850	.950	19	1.044	40	103911-7	
-.437	.050	1.100	1.200	24	1.294	50	103911-6	
-.294	.050	1.350	1.450	29	1.544	60	103911-5	
-.150	.050	.350	.450	9	.544	20	103911-4	
-.100	.100	-.200	.200	4	.294	10	103911-3	

THIS DRAWING IS A CONTROLLED DOCUMENT.

DWN D CLOUSER 3-20-86
 CHK J S STARON 3-20-86
 APVD J S STARON 3-20-86

DIMENSIONS: INCHES
 TOLERANCES UNLESS OTHERWISE SPECIFIED:
 0 PLC ± -
 1 PLC ± -
 2 PLC ± -
 3 PLC ± -
 4 PLC ± -
 ANGLES ± -
 FINISH SEE TABLE

PRODUCT SPEC 108-1093
 APPLICATION SPEC 114-25031
 WEIGHT -

NAME RECEPTACLE ASSEMBLY, RIGHT ANGLE, AMPMODU System 50
 SIZE A2 CAGE CODE 00779 DRAWING NO C-103911 RESTRICTED TO -
 SCALE 4:1 SHEET 1 OF 1 REV L2

TE Connectivity