



Chipsmall Limited consists of a professional team with an average of over 10 year of expertise in the distribution of electronic components. Based in Hongkong, we have already established firm and mutual-benefit business relationships with customers from,Europe,America and south Asia,supplying obsolete and hard-to-find components to meet their specific needs.

With the principle of “Quality Parts,Customers Priority,Honest Operation,and Considerate Service”,our business mainly focus on the distribution of electronic components. Line cards we deal with include Microchip,ALPS,ROHM,Xilinx,Pulse,ON,Everlight and Freescale. Main products comprise IC,Modules,Potentiometer,IC Socket,Relay,Connector.Our parts cover such applications as commercial,industrial, and automotives areas.

We are looking forward to setting up business relationship with you and hope to provide you with the best service and solution. Let us make a better world for our industry!



## Contact us

Tel: +86-755-8981 8866 Fax: +86-755-8427 6832

Email & Skype: info@chipsmall.com Web: www.chipsmall.com

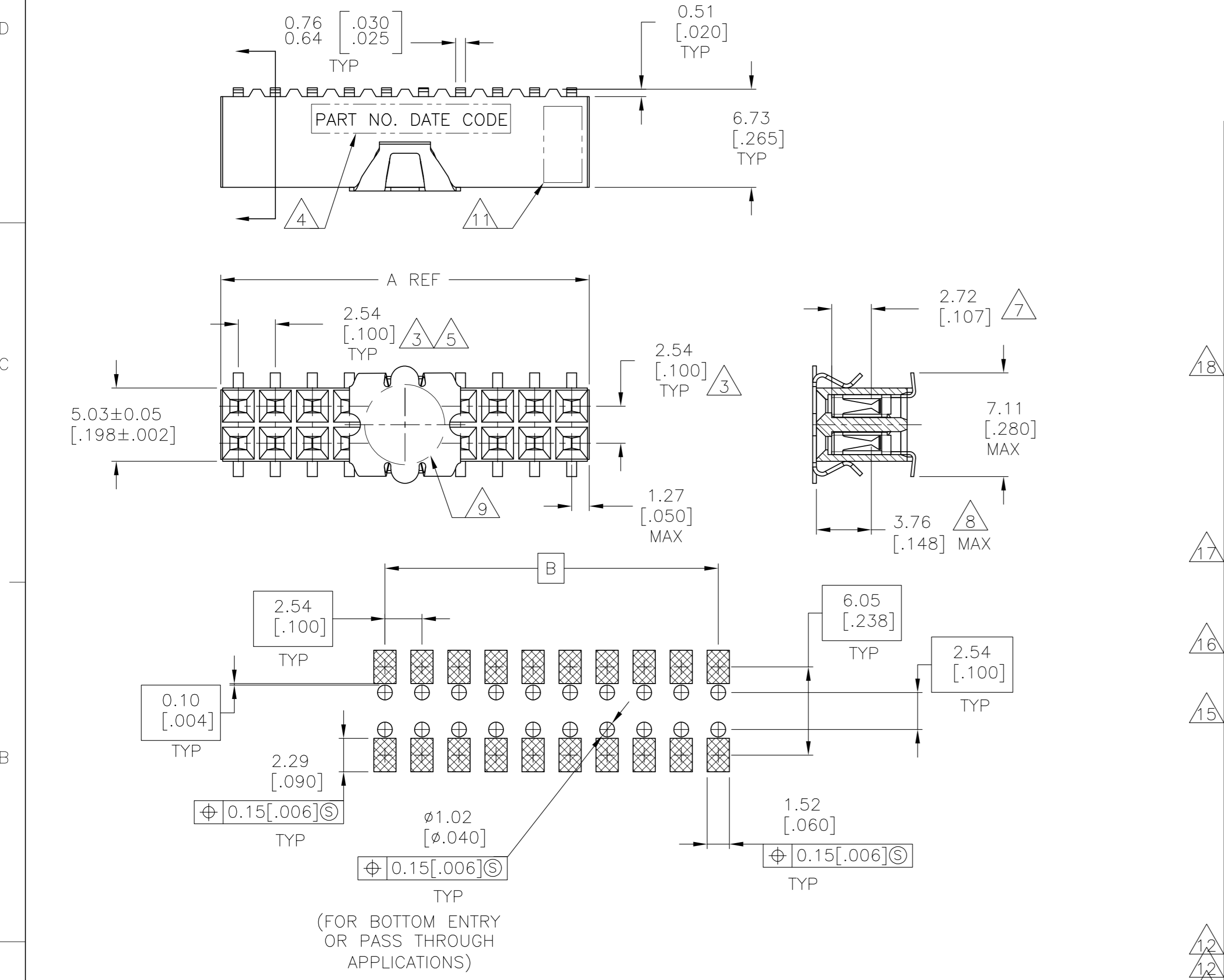
Address: A1208, Overseas Decoration Building, #122 Zhenhua RD., Futian, Shenzhen, China



THIS DRAWING IS UNPUBLISHED. RELEASED FOR PUBLICATION  
 © COPYRIGHT - By - ALL RIGHTS RESERVED.

LOC		DIST		REVISIONS					
P	LTR	DESCRIPTION			DATE	DWN	APVD		
AD	00	J9		REVISED PER ECO-13-005565			01APR13	KH	JO

FOR PART NUMBERS 5-147105-1 THRU 9-147105-0  
 SEE SHEET 2



RECOMMENDED PC BOARD LAYOUT  
 0.20[.008] THICK STENCIL

FINISH	EIA TAPE WIDTH	B	A	NO. OF POSN.	PART NUMBER
1	B	A	B	120mm	99.06 [3.900] 101.60 [4.000] 80 4-147105-0
				96.52 [3.800] 99.06 [3.900] 78 3-147105-9	
				93.98 [3.700] 96.52 [3.800] 76 3-147105-8	
				91.44 [3.600] 93.98 [3.700] 74 3-147105-7	
				88.90 [3.500] 91.44 [3.600] 72 3-147105-6	
				86.36 [3.400] 88.90 [3.500] 70 3-147105-5	
				83.82 [3.300] 86.36 [3.400] 68 3-147105-4	
				81.28 [3.200] 83.82 [3.300] 66 3-147105-3	
				78.74 [3.100] 81.28 [3.200] 64 3-147105-2	
				76.20 [3.000] 78.74 [3.100] 62 3-147105-1	
				73.66 [2.900] 76.20 [3.000] 60 3-147105-0	
				71.12 [2.800] 73.66 [2.900] 58 2-147105-9	
				68.58 [2.700] 71.12 [2.800] 56 2-147105-8	
				66.04 [2.600] 68.58 [2.700] 54 2-147105-7	
				63.50 [2.500] 66.04 [2.600] 52 2-147105-6	
				60.96 [2.400] 63.50 [2.500] 50 2-147105-5	
				58.42 [2.300] 60.96 [2.400] 48 2-147105-4	
				55.88 [2.200] 58.42 [2.300] 46 2-147105-3	
				53.34 [2.100] 55.88 [2.200] 44 2-147105-2	
				50.80 [2.000] 53.34 [2.100] 42 2-147105-1	
				48.26 [1.900] 50.80 [2.000] 40 2-147105-0	
				45.72 [1.800] 48.26 [1.900] 38 1-147105-9	
				43.18 [1.700] 45.72 [1.800] 36 1-147105-8	
				40.64 [1.600] 43.18 [1.700] 34 1-147105-7	
38.10 [1.500] 40.64 [1.600] 32 1-147105-6					
35.56 [1.400] 38.10 [1.500] 30 1-147105-5					
33.02 [1.300] 35.56 [1.400] 28 1-147105-4					
30.48 [1.200] 33.02 [1.300] 26 1-147105-3					
27.94 [1.100] 30.48 [1.200] 24 1-147105-2					
25.40 [1.000] 27.94 [1.100] 22 1-147105-1					
22.86 [.900] 25.40 [1.000] 20 1-147105-0					
20.32 [.800] 22.86 [.900] 18 147105-9					
17.78 [.700] 20.32 [.800] 16 147105-8					
15.24 [.600] 17.78 [.700] 14 147105-7					
12.70 [.500] 15.24 [.600] 12 147105-6					
10.16 [.400] 12.70 [.500] 10 147105-5					
7.62 [.300] 10.16 [.400] 8 147105-4					
5.08 [.200] 7.62 [.300] 6 147105-3					
2.54 [.100] 5.08 [.200] 4 147105-2					
24mm	-	2.54 [.100]	2	147105-1	

THIS DRAWING IS A CONTROLLED DOCUMENT.

DIMENSIONS: mm [INCHES]

TOLERANCES UNLESS OTHERWISE SPECIFIED:

0 PLC	± -
1 PLC	± -
2 PLC	± .005[0.13]
3 PLC	± -
4 PLC	± -
ANGLES	± -

MATERIAL: 1

FINISH: SEE TABLE

APPROVALS:

DWN	M.BINNER	06NOV02
CHK	J.OLSON	06NOV02
APVD	J.OLSON	06NOV02

PRODUCT SPEC: 108-25022

APPLICATION SPEC: 114-25018

WEIGHT: 114-25018

CUSTOMER DRAWING

TE Connectivity

RECEPTACLE ASSEMBLY, MOD IV, DOUBLE ROW, DUAL ENTRY, .100X.100CL, SURFACE MOUNT, AMPMODU

SIZE: A2 CAGE CODE: 00779 DRAWING NO: 147105 RESTRICTED TO: -

SCALE: 4:1 SHEET: 1 of 2 REV: J9


THIS DRAWING IS UNPUBLISHED. RELEASED FOR PUBLICATION  
 © COPYRIGHT - By - ALL RIGHTS RESERVED.

LOC		DIST		REVISIONS			
P	LTR	DESCRIPTION		DATE	DWN	APVD	
-	-	SEE SHEET 1		-	-	-	

- 1 HOUSING: FLAME RETARDANT, GLASS FILLED, POLYESTER, COLOR: BLACK.  
CONTACT: PHOSPHOR BRONZE  
VACUUM COVER: STAINLESS STEEL
- 2 CONTACT: DUPLEX PLATED 0.76µm[.000030] GOLD IN CONTACT AREA, 3.81-7.62µm[.000150-.000300] BRIGHT TIN-LEAD ON, LEADS, ALL OVER 1.27µm[.000050] MINIMUM NICKEL
- 3 THESE DIMENSIONS PERTAIN TO CAVITY CENTERLINES ONLY NOT TO CONTACT LOCATIONS
- 4 MARK PART NUMBER AND DATE CODE, IN APPROXIMATE LOCATION SHOWN, EITHER SIDE.
- 5 TOLERANCE IS NON-CUMULATIVE.
- 6 2 POSITION DATE CODE IS MARKED OPPOSITE SIDE OF TE CONNECTIVITY LOGO.
- 7 POINT OF MEASUREMENT DIMENSION FOR PLATING THICKNESS (INSIDE CONTACT BEAM).
- 8 POINT-OF-CONTACT DIMENSION.
- 9 ø5.51[.217] MIN TARGET AREA FOR VACUUM PICK UP. COVER TO BE REMOVED AFTER SOLDERING.
- 10 PACKAGED IN TAPE & REEL PER EIA 481 SPECIFICATION.
- 11 TE CONNECTIVITY TRADEMARK AND CSA LOGO ARE MOLDED INTO HOUSING.
- 12 NO PART NUMBER REQUIRED ON THIS PART.
- 13 CONTACT: DUPLEX PLATE CONNECTIVITYD 0.76µm[.000030] GOLD IN CONTACT AREA, 3.81-7.62µm[.000150-.000300] MATTE TIN ON LEADS, ALL OVER 1.27µm[.000050] MINIMUM NICKEL.
- 14 ROHS 2002/95/EC COMPLIANT.
- 15 SUPERRSEDED BY 6-147105-5
- 16 SUPERRSEDED BY 6-147105-8
- 17 SUPERRSEDED BY 7-147105-2
- 18 SUPERRSEDED BY 8-147105-0

120mm	99.06[3.900]	101.60[4.000]	80	9-147105-0	
	96.52[3.800]	99.06[3.900]	78	8-147105-9	
	93.98[3.700]	96.52[3.800]	76	8-147105-8	
	91.44[3.600]	93.98[3.700]	74	8-147105-7	
	88.90[3.500]	91.44[3.600]	72	8-147105-6	
	86.36[3.400]	88.90[3.500]	70	8-147105-5	
	83.82[3.300]	86.36[3.400]	68	8-147105-4	
	81.28[3.200]	83.82[3.300]	66	8-147105-3	
	78.74[3.100]	81.28[3.200]	64	8-147105-2	
	76.20[3.000]	78.74[3.100]	62	8-147105-1	
	73.66[2.900]	76.20[3.000]	60	8-147105-0	
	71.12[2.800]	73.66[2.900]	58	7-147105-9	
	68.58[2.700]	71.12[2.800]	56	7-147105-8	
	88mm	66.04[2.600]	68.58[2.700]	54	7-147105-7
63.50[2.500]		66.04[2.600]	52	7-147105-6	
60.96[2.400]		63.50[2.500]	50	7-147105-5	
58.42[2.300]		60.96[2.400]	48	7-147105-4	
55.88[2.200]		58.42[2.300]	46	7-147105-3	
53.34[2.100]		55.88[2.200]	44	7-147105-2	
72mm	50.80[2.000]	53.34[2.100]	42	7-147105-1	
	48.26[1.900]	50.80[2.000]	40	7-147105-0	
	45.72[1.800]	48.26[1.900]	38	6-147105-9	
	43.18[1.700]	45.72[1.800]	36	6-147105-8	
	40.64[1.600]	43.18[1.700]	34	6-147105-7	
	38.10[1.500]	40.64[1.600]	32	6-147105-6	
	35.56[1.400]	38.10[1.500]	30	6-147105-5	
	33.02[1.300]	35.56[1.400]	28	6-147105-4	
	30.48[1.200]	33.02[1.300]	26	6-147105-3	
	27.94[1.100]	30.48[1.200]	24	6-147105-2	
44mm	25.40[1.000]	27.94[1.100]	22	6-147105-1	
	22.86[.900]	25.40[1.000]	20	6-147105-0	
	20.32[.800]	22.86[.900]	18	5-147105-9	
	17.78[.700]	20.32[.800]	16	5-147105-8	
	15.24[.600]	17.78[.700]	14	5-147105-7	
	12.70[.500]	15.24[.600]	12	5-147105-6	
	10.16[.400]	12.70[.500]	10	5-147105-5	
	7.62[.300]	10.16[.400]	8	5-147105-4	
	5.08[.200]	7.62[.300]	6	5-147105-3	
	2.54[.100]	5.08[.200]	4	5-147105-2	
OBSOLETE	-	2.54[.100]	2	5-147105-1	
FINISH	EIA TAPE WIDTH	B	A	NO.OF POSN.	PART NUMBER

- 12
- 12
- 12
- 12

THIS DRAWING IS A CONTROLLED DOCUMENT.		DWN M.BINNER 06NOV02	 TE Connectivity			
DIMENSIONS: mm [INCHES]		CHK J.OLSON 06NOV02				
TOLERANCES UNLESS OTHERWISE SPECIFIED:		APVD J.OLSON 06NOV02				
0 PLC ± - 1 PLC ± - 2 PLC ± .005[0.13] 3 PLC ± - 4 PLC ± - ANGLES ± -		NAME				
MATERIAL		PRODUCT SPEC	RECEPTACLE ASSEMBLY, MOD IV, DOUBLE ROW, DUAL ENTRY, .100X.100CL, SURFACE MOUNT, AMPMODU			
FINISH		APPLICATION SPEC	SIZE	CAGE CODE	DRAWING NO	RESTRICTED TO
SEE TABLE		108-25022	A2	00779	C=147105	-
		WEIGHT 114-25018	SCALE 1:1	SHEET 2 OF 2	REV J9	
		CUSTOMER DRAWING				