



Chipsmall Limited consists of a professional team with an average of over 10 year of expertise in the distribution of electronic components. Based in Hongkong, we have already established firm and mutual-benefit business relationships with customers from,Europe,America and south Asia,supplying obsolete and hard-to-find components to meet their specific needs.

With the principle of “Quality Parts,Customers Priority,Honest Operation,and Considerate Service”,our business mainly focus on the distribution of electronic components. Line cards we deal with include Microchip,ALPS,ROHM,Xilinx,Pulse,ON,Everlight and Freescale. Main products comprise IC,Modules,Potentiometer,IC Socket,Relay,Connector.Our parts cover such applications as commercial,industrial, and automotives areas.

We are looking forward to setting up business relationship with you and hope to provide you with the best service and solution. Let us make a better world for our industry!



Contact us

Tel: +86-755-8981 8866 Fax: +86-755-8427 6832

Email & Skype: info@chipsmall.com Web: www.chipsmall.com

Address: A1208, Overseas Decoration Building, #122 Zhenhua RD., Futian, Shenzhen, China



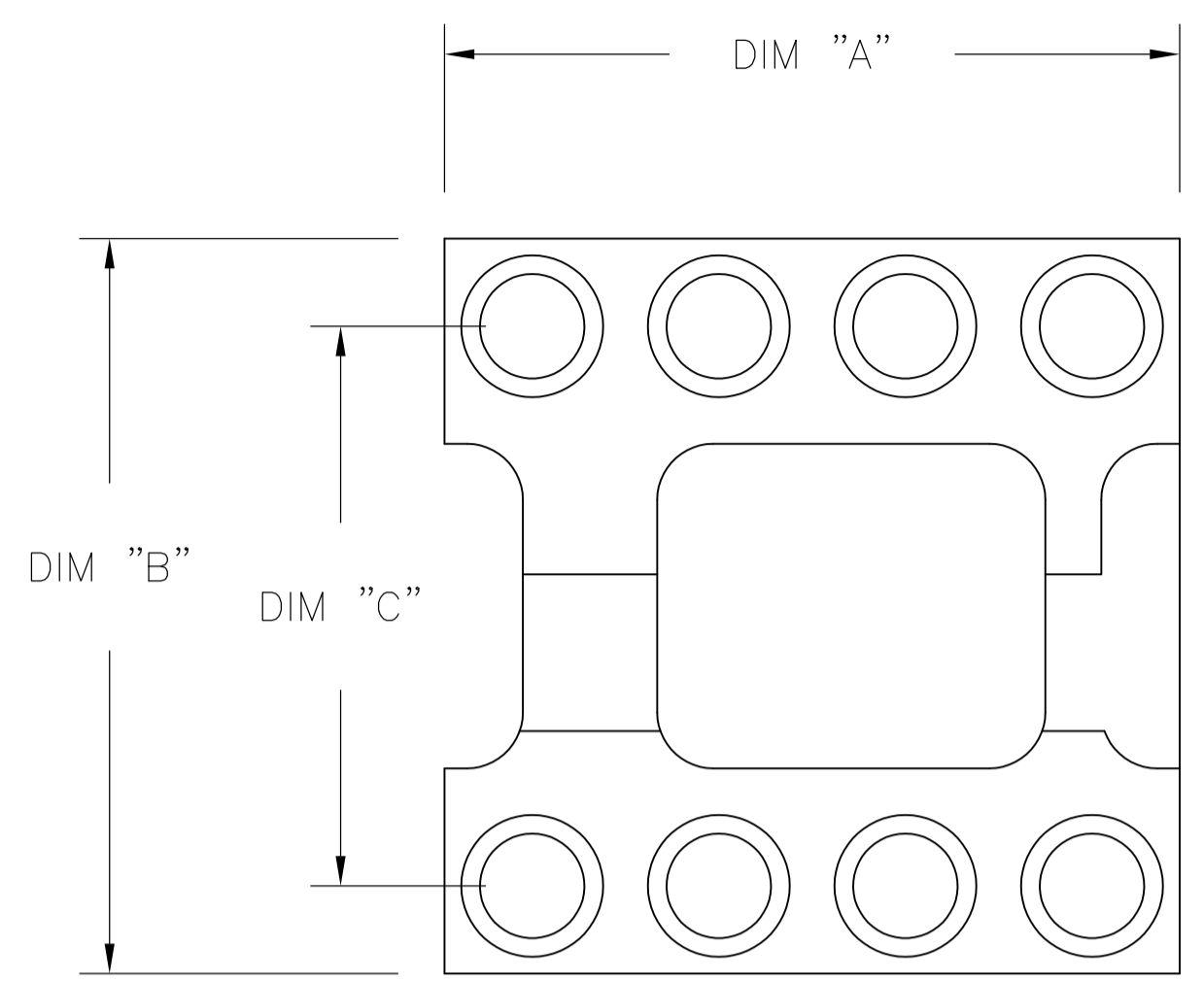


FIG. 1

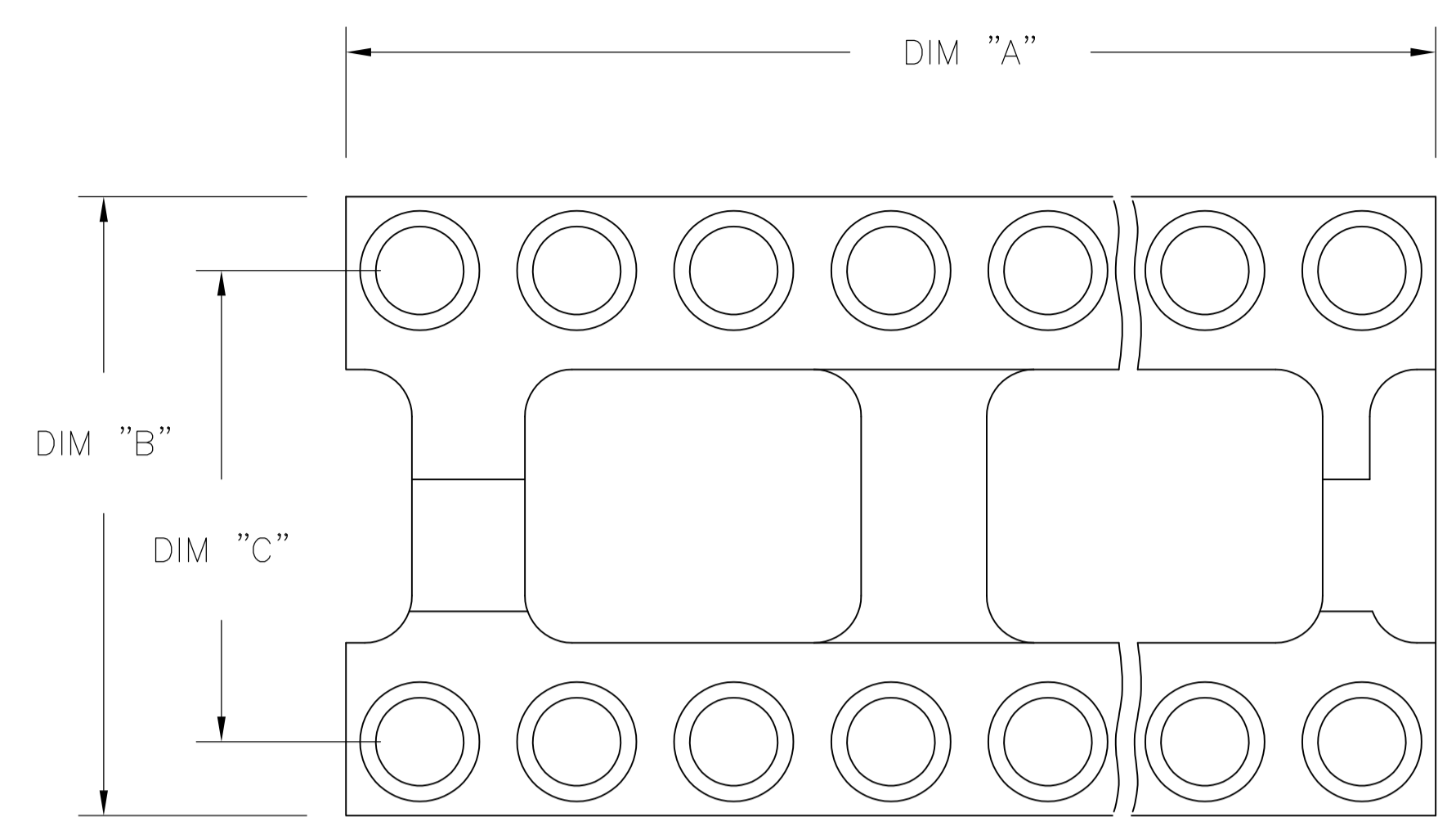


FIG. 2

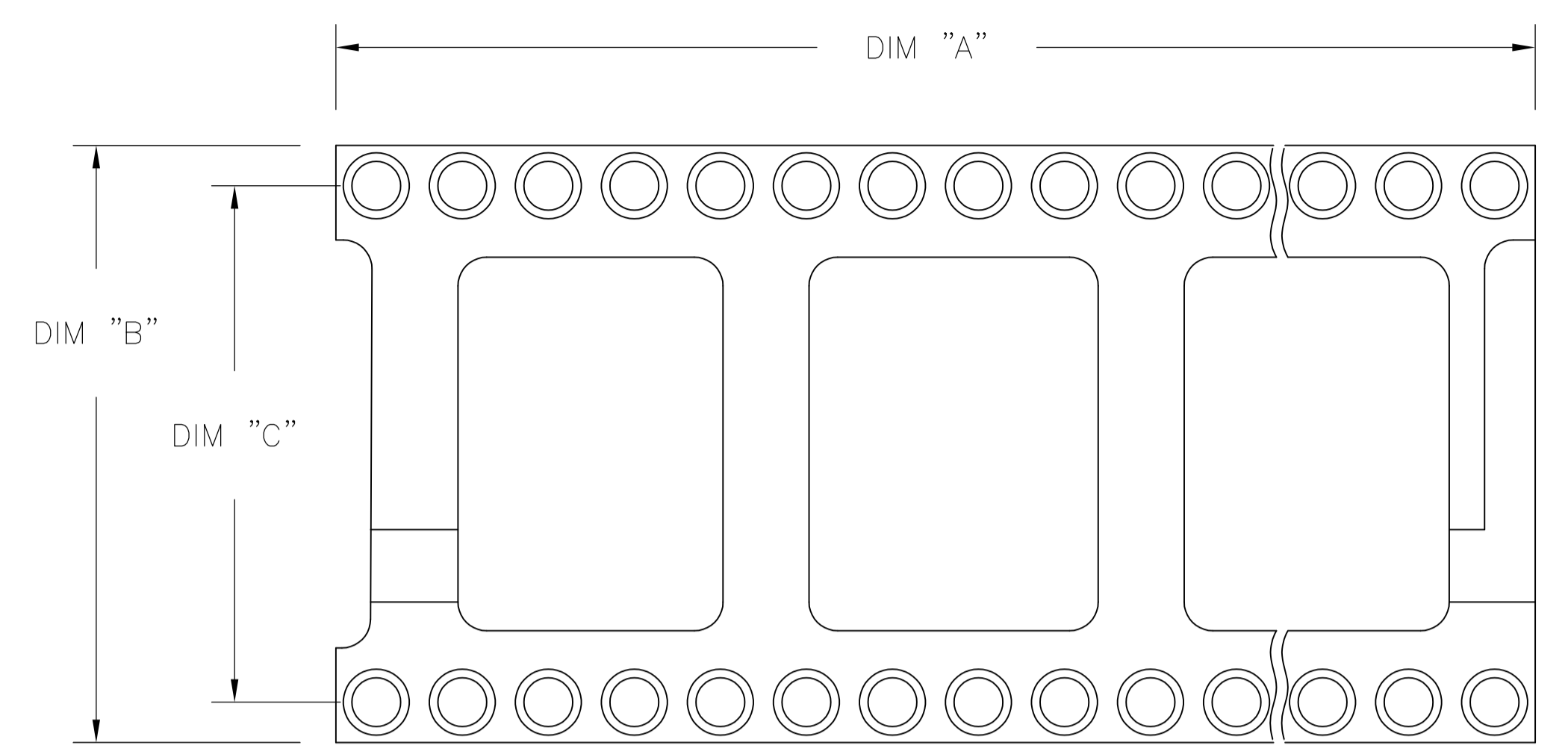
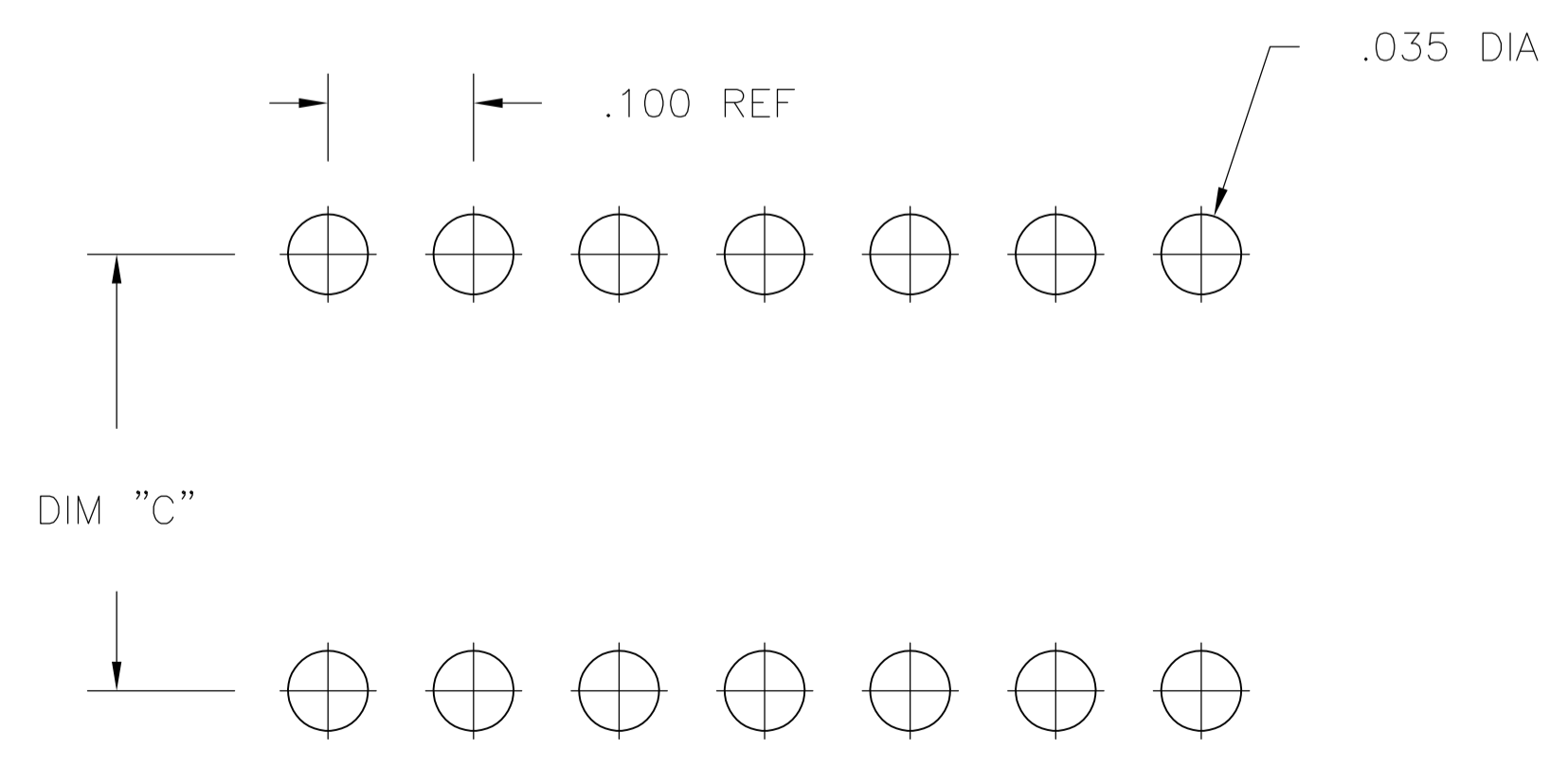
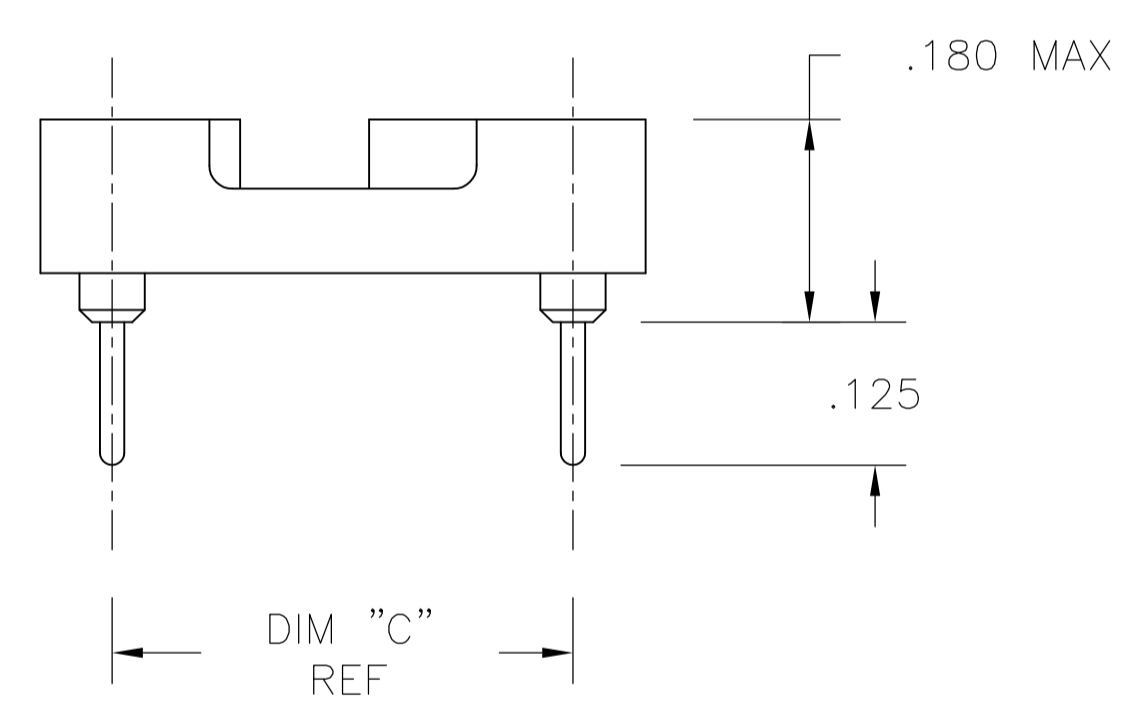
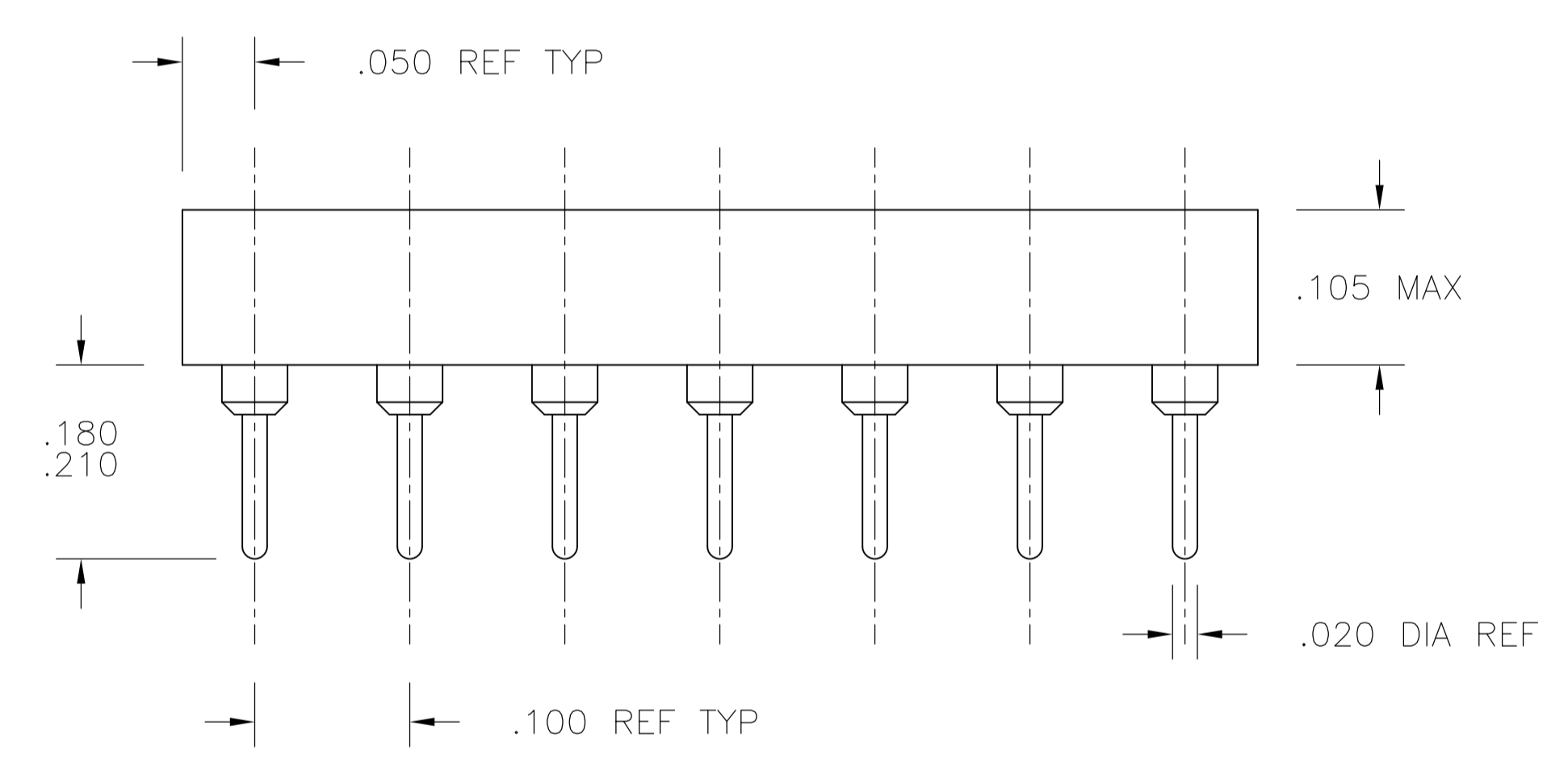


FIG. 3



P.C.B. HOLE LAYOUT
TOLERANCE ±.003

1. INSULATOR MATERIAL - THERMOPLASTIC POLYESTER, PCT, BLACK, UL94 V-0
2. STAMPED CONTACT - BECU, PLATED WITH 80-200μ" TIN (LEAD FREE) OVER 75-100μ" COPPER.
3. SLEEVE - COPPER, PLATED WITH 180-340μ" THK TIN (LEAD FREE) OVER 75-125μ" MIN NICKEL.
5. STAMPED CONTACT-BECU, PLATED WITH GOLD FLASH OVER 50-100μ" NICKEL
6. STAMPED CONTACT-BECU, PLATED WITH 20μ" MIN GOLD OVER 30-100μ" NICKEL.
7. ELECTRICAL:
CONTACT RESISTANCE: 10 MILLIOHMS MAX
CONTACT RATING: 3 AMPS
CAPACITANCE: 1.0 pF PER MIL-STD-202, METHOD 305
INSULATION RESISTANCE: 5000 OHMS MIN @ 500 VDC PER MIL-STD-1344, METHOD 3003.1
DIELECTRIC WITHSTANDING VOLTAGE: 1000 VOLTS (RMS) PER MIL-STD-1344, METHOD 3001.1
8. MECHANICAL:
INSERTION FORCE: 179 GRAMS AVG
WITHDRAWAL FORCE: 63 GRAMS AVG
"ACCEPTS IC PIN - .009"X.015" THROUGH .011"X.020", OR .016" TO .021" DIAMETER, .150/.105 LONG"
9. ENVIRONMENTAL:
OPERATING TEMPERATURE: -55°C TO +105°C
10. OBSOLETE PARTS: OBSOLETE CIS STREAMLINING PER D.RENAUD/D.SINISI

THIS DRAWING IS A CONTROLLED DOCUMENT.		DIN: BSV	27JUL04	TE Connectivity	
DIMENSIONS: INCHES		TOLERANCES UNLESS OTHERWISE SPECIFIED:			
		0. PLC ± -	1. PLC ± -	APVD: K. WRIGHT	
MATERIAL: SEE NOTES		2. PLC ± -	3. PLC ± .005	NAME: OPEN FRAME DIP, ECONOMY (STAMPED CONTACT) (REF AUGAT 800 SERIES)	
FINISH: SEE NOTES		4. PLC ANGLES ± -	5. PLC ± -	APPLICATION SPEC: -	
		WEIGHT: -		SIZE: A1	CAGE CODE: 00779
		CUSTOMER DRAWING		DRAWING NO: 1571552	RESTRICTED TO: -
		SCALE: 4:1		SHEET: 1 OF 2	REV: E4

$\triangle_{3/6/10}$	OBSOLETE	GOLD / TIN	.400±.005	.500	1.200	2	24	5-1571552-7
$\triangle_{3/6}$	GOLD / TIN	.300±.005	.400	1.200	2	24	5-1571552-6	
$\triangle_{3/6}$	GOLD / TIN	.900±.005	1.000	3.200	3	64	5-1571552-5	
$\triangle_{3/6}$	GOLD / TIN	.600±.005	.700	2.400	3	48	5-1571552-4	
$\triangle_{3/6}$	GOLD / TIN	.600±.005	.700	2.100	3	42	5-1571552-3	
$\triangle_{3/6}$	GOLD / TIN	.600±.005	.700	2.000	3	40	5-1571552-2	
$\triangle_{3/6}$	GOLD / TIN	.600±.005	.700	1.800	3	36	5-1571552-1	
$\triangle_{3/6}$	GOLD / TIN	.600±.005	.700	1.600	3	32	5-1571552-0	
$\triangle_{3/6}$	GOLD / TIN	.600±.005	.700	1.400	2	28	4-1571552-9	
$\triangle_{3/6}$	GOLD / TIN	.600±.005	.700	1.200	2	24	4-1571552-8	
$\triangle_{3/6}$	GOLD / TIN	.400±.005	.500	1.100	2	22	4-1571552-7	
$\triangle_{3/6}$	GOLD / TIN	.300±.005	.400	1.000	2	20	4-1571552-6	
$\triangle_{3/6}$	GOLD / TIN	.300±.005	.400	.900	2	18	4-1571552-5	
$\triangle_{3/6}$	GOLD / TIN	.300±.005	.400	.800	2	16	4-1571552-4	
$\triangle_{3/6}$	GOLD / TIN	.300±.005	.400	.400	1	8	4-1571552-3	
$\triangle_{3/6}$	GOLD / TIN	.300±.005	.400	.700	2	14	4-1571552-2	
$\triangle_{3/5/10}$	OBSOLETE	G F / TIN	.400±.005	.500	1.200	2	24	3-1571552-7
$\triangle_{3/5}$	G F / TIN	.300±.005	.400	1.200	2	24	3-1571552-6	
$\triangle_{3/5}$	G F / TIN	.900±.005	1.000	3.200	3	64	3-1571552-5	
$\triangle_{3/5}$	G F / TIN	.600±.005	.700	2.400	3	48	3-1571552-4	
$\triangle_{3/5}$	G F / TIN	.600±.005	.700	2.100	3	42	3-1571552-3	
$\triangle_{3/5}$	G F / TIN	.600±.005	.700	2.000	3	40	3-1571552-2	
$\triangle_{3/5}$	G F / TIN	.600±.005	.700	1.800	3	36	3-1571552-1	
$\triangle_{3/5}$	G F / TIN	.600±.005	.700	1.600	3	32	3-1571552-0	
$\triangle_{3/5}$	G F / TIN	.600±.005	.700	1.400	2	28	2-1571552-9	
$\triangle_{3/5}$	G F / TIN	.600±.005	.700	1.200	2	24	2-1571552-8	
$\triangle_{3/5}$	G F / TIN	.400±.005	.500	1.100	2	22	2-1571552-7	
$\triangle_{3/5}$	G F / TIN	.300±.005	.400	1.000	2	20	2-1571552-6	
$\triangle_{3/5}$	G F / TIN	.300±.005	.400	.900	2	18	2-1571552-5	
$\triangle_{3/5}$	G F / TIN	.300±.005	.400	.800	2	16	2-1571552-4	
$\triangle_{3/5}$	G F / TIN	.300±.005	.400	.700	2	14	2-1571552-3	
$\triangle_{3/5}$	G F / TIN	.300±.005	.400	.400	1	8	2-1571552-2	
$\triangle_{3/2}$	TIN / TIN	.400±.005	.500	1.200	2	24	1-1571552-7	
$\triangle_{3/2}$	TIN / TIN	.300±.005	.400	1.200	2	24	1-1571552-6	
$\triangle_{3/2/10}$	OBSOLETE	TIN / TIN	.900±.005	1.000	3.200	3	64	1-1571552-5
$\triangle_{3/2/10}$	OBSOLETE	TIN / TIN	.600±.005	.700	2.400	3	48	1-1571552-4
$\triangle_{3/2/10}$	OBSOLETE	TIN / TIN	.600±.005	.700	2.100	3	42	1-1571552-3
$\triangle_{3/2}$	TIN / TIN	.600±.005	.700	2.000	3	40	1-1571552-2	
$\triangle_{3/2/10}$	OBSOLETE	TIN / TIN	.600±.005	.700	1.800	3	36	1-1571552-1
$\triangle_{3/2}$	TIN / TIN	.600±.005	.700	1.600	3	32	1-1571552-0	
$\triangle_{3/2}$	TIN / TIN	.600±.005	.700	1.400	2	28	1571552-9	
$\triangle_{3/2}$	TIN / TIN	.600±.005	.700	1.200	2	24	1571552-8	
$\triangle_{3/2/10}$	OBSOLETE	TIN / TIN	.400±.005	.500	1.100	2	22	1571552-7
$\triangle_{3/2}$	TIN / TIN	.300±.005	.400	1.000	2	20	1571552-6	
$\triangle_{3/2}$	TIN / TIN	.300±.005	.400	.900	2	18	1571552-5	
$\triangle_{3/2}$	TIN / TIN	.300±.005	.400	.800	2	16	1571552-4	
$\triangle_{3/2}$	TIN / TIN	.300±.005	.400	.700	2	14	1571552-3	
$\triangle_{3/2}$	TIN / TIN	.300±.005	.400	.400	1	8	1571552-2	

FINISH CONTACT/ SLEEVE	"C" MAX	"B" MAX	"A" MAX	FIG	NO. OF POSN	PART NO.
---------------------------	------------	------------	------------	-----	-------------------	----------

THIS DRAWING IS A CONTROLLED DOCUMENT. DWN: BSV 27JUL04
 CHK: -

TE TE Connectivity

DIMENSIONS: INCHES TOLERANCES UNLESS OTHERWISE SPECIFIED:
 0. PLC ± -
 1. PLC ± -
 2. PLC ± -
 3. PLC ± .005
 4. PLC ± -
 ANGLES ± -

MATERIAL: SEE SHEET 1 FINISH: SEE SHEET 1

NAME: OPEN FRAME DIP, ECONOMY (STAMPED CONTACT) (REF AUGAT 800 SERIES)
 PRODUCT SPEC: -
 APPLICATION SPEC: -

SIZE: A1 CAGE CODE: 00779 DRAWING NO: 1571552
 WEIGHT: -

CUSTOMER DRAWING SCALE: 1:1 SHEET: 2 OF 2 REV: E4