



Chipsmall Limited consists of a professional team with an average of over 10 year of expertise in the distribution of electronic components. Based in Hongkong, we have already established firm and mutual-benefit business relationships with customers from,Europe,America and south Asia,supplying obsolete and hard-to-find components to meet their specific needs.

With the principle of "Quality Parts,Customers Priority,Honest Operation,and Considerate Service",our business mainly focus on the distribution of electronic components. Line cards we deal with include Microchip,ALPS,ROHM,Xilinx,Pulse,ON,Everlight and Freescale. Main products comprise IC,Modules,Potentiometer,IC Socket,Relay,Connector.Our parts cover such applications as commercial,industrial, and automotives areas.

We are looking forward to setting up business relationship with you and hope to provide you with the best service and solution. Let us make a better world for our industry!



## Contact us

Tel: +86-755-8981 8866 Fax: +86-755-8427 6832

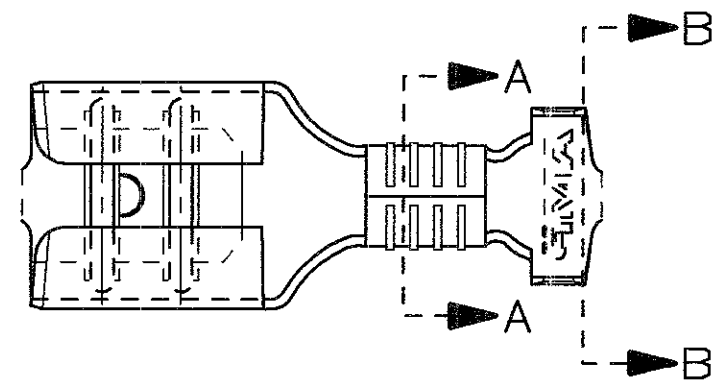
Email & Skype: info@chipsmall.com Web: www.chipsmall.com

Address: A1208, Overseas Decoration Building, #122 Zhenhua RD., Futian, Shenzhen, China

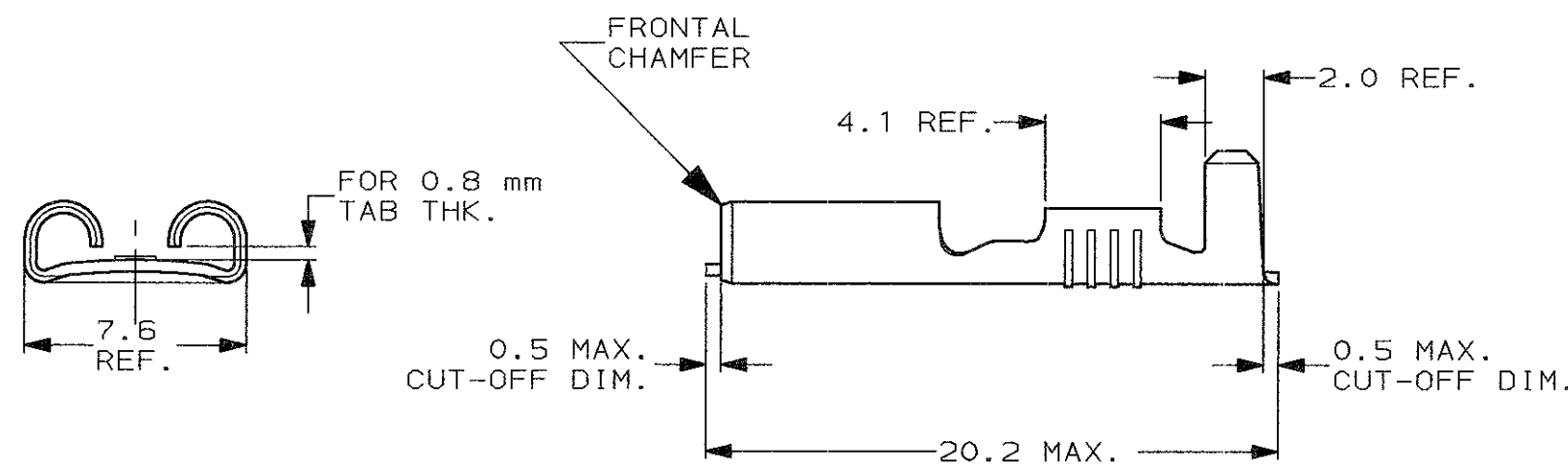


SCALA NON IMPEGNATIVA  
(DO NOT SCALE)  
DIMENSIONI IN mm  
(DIMENSIONS IN)

**METRIC**



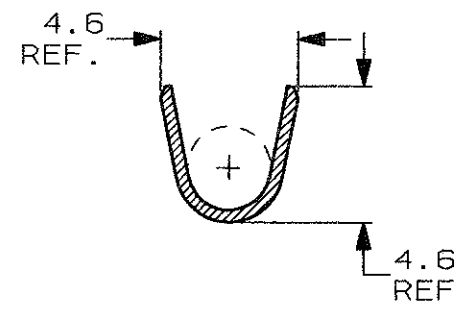
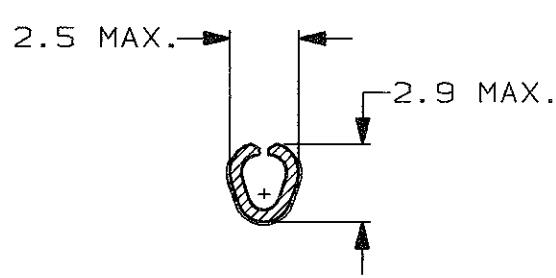
- 1) PER LE VERSIONI IN NASTRO  
VEDERE DISEGNO 160432.  
(FOR STRIP VERSION SEE DWG. 160432).
- 2) CONFEZIONATO IN ACCORDO ALLA  
SPECIFICA AMP 107-20201.  
(PACKAGED ACCORDING TO AMP SPEC. 107-20201).



**SEZIONE A-A**  
(SECTION A-A)

**SEZIONE B-B**  
(SECTION B-B)

INSULATION BARREL  
NO PREFORMING REQUIRED



STAGNATO (TIN PLATED)	BRONZO FOS. (PHOS. BRONZE)	5-160506-8	J
NUDO (UNPLATED)	BRONZO FOS. (PHOS. BRONZE)	5-160506-7	J
ARGENTATO (SILVER PLATED)	OTTONE (BRASS)	5-160506-5	J
PRE NICHELATO (PRE-NICKEL PL.)	ACCIAIO (STEEL)	5-160506-3	J
STAGNATO (TIN PLATED)	OTTONE (BRASS)	5-160506-2	J
NUDO (UNPLATED)	OTTONE (BRASS)	5-160506-1	J
FINITURA / COLORE (FINISH / COLOUR)	MATERIALE (MATERIAL)	NUMERO (PART NUMBER)	REV

**CUSTOMER DWG. FOR REFERENCE ONLY**      **DISEGNO PER CLIENTE SOLO PER RIFERIMENTO**

~~THIS DRAWING IS UNPUBLISHED~~      RELEASE FOR PUBLICATION

TOLLERANZE, SE NON DIVERSAMENTE SPECIFICATO (TOLERANCES, UNLESS OTHERWISE SPECIFIED)	DIAM. ISOLANTE (INS. DIA. RANGE)	RANGO FILO (WIRE RANGE)	SCALA (SCALE)
± 0.3	2.3-3.3	0.5-1.5	4:1
ANGOLI (ANGLES)	TE Connectivity		

DIS. H. YAALI (DR.) 17 OCT 2000  
CONT. C. TARTARI (CHK) 17 OCT 2000

REV. (REV.)	REVISIONI (REVISION RECORD)	RK (DR)	DATA (DATE)	APP. (APP.)	LOC. (LOC.)	SIZE (SIZE)	NUMERO (DWG NO)	REV. (REV.)	FOLIO (SHEET)
J1	REVISED PER ECO-11-005294	RK	09APR 11		I	A3	C-160506	J1	1 OF 1

DISTRIBUZIONE (PRINT/DIST.)