



Chipsmall Limited consists of a professional team with an average of over 10 year of expertise in the distribution of electronic components. Based in Hongkong, we have already established firm and mutual-benefit business relationships with customers from,Europe,America and south Asia,supplying obsolete and hard-to-find components to meet their specific needs.

With the principle of "Quality Parts,Customers Priority,Honest Operation,and Considerate Service",our business mainly focus on the distribution of electronic components. Line cards we deal with include Microchip,ALPS,ROHM,Xilinx,Pulse,ON,Everlight and Freescale. Main products comprise IC,Modules,Potentiometer,IC Socket,Relay,Connector.Our parts cover such applications as commercial,industrial, and automotives areas.

We are looking forward to setting up business relationship with you and hope to provide you with the best service and solution. Let us make a better world for our industry!



Contact us

Tel: +86-755-8981 8866 Fax: +86-755-8427 6832

Email & Skype: info@chipsmall.com Web: www.chipsmall.com

Address: A1208, Overseas Decoration Building, #122 Zhenhua RD., Futian, Shenzhen, China

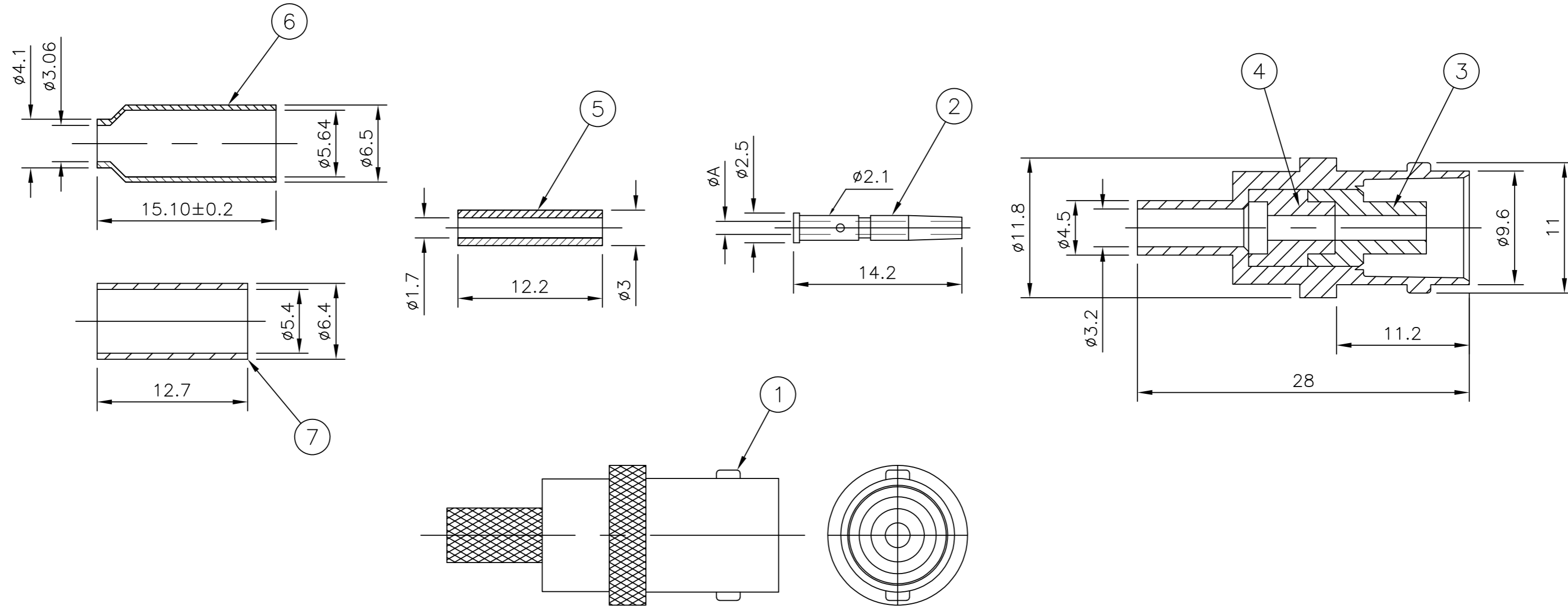


THIS DRAWING IS UNPUBLISHED. RELEASED FOR PUBLICATION JUNE , 2004.
 © COPYRIGHT 2004 By - ALL RIGHTS RESERVED.

LOC	DIST	REVISIONS					
E	B	P	LTR	DESCRIPTION	DATE	DWN	APVD
		C1		ECO-09-023525	20 OCT 09	RITA	BOB
		D		ECO-12-014680	20Aug2012	TITAN	MARTIN

- NOTES**
- 1 IP PACK: 1PC/ONE BAG, 100PCS/INNER BOX, 1000PCS/OUTER BOX
 - 2 BULK PACK: 100PCS/ONE BAG, 100PCS/INNER BOX, 1000PCS/OUTER BOX
 - 3 Au PLATING OVER Ni PLATING OVER Cu PLATING
 - 4 Ni PLATING OVER Cu PLATING
 5. HAND TOOL: 9-1478240-0
 6. DIE SET: SEE TABLE
 7. FOR TECHNICAL DATA REFER TO YOUR LOCAL TYCO ELECTRONICS SALES OFFICE
 8. ALL DIMENSIONS ARE NOMINAL FOR REFERENCE ONLY UNLESS OTHERWISE STATED

				1.1	9-1478242-0	RG58C/U, 141A/U, URM43, 76, BELDEN 9907, KX 15			5-1634511-3
				1.1	9-1478242-0	RG58C/U, 141A/U, URM43, 76, BELDEN 9907, KX 15			5-1634511-2
				0.57	9-1478242-0	RG174A/U, 188A/U, 316/U, URM95, KX 3B, KX 22A			5-1634511-1
				0.57	9-1478242-0	RG174A/U, 188A/U, 316/U, URM95, KX 3B, KX 22A			5-1634511-0
				A	DIE SET	CABLE GROUPS			PART NO.
DIMENSIONS									



QTY	UNIT	DESCRIPTION	ITEM
1	1	BRASS	7
-	-	BRASS	6
-	-	NYLON	5
1	1	POLYMETHYLPENTENE	4
1	1	POLYMETHYLPENTENE	3
1	1	PHOSPHOR BRONZE	2
1	1	ZINC ALLOY	1
5	35	MATERIAL	DESCRIPTION

THIS DRAWING IS A CONTROLLED DOCUMENT.

DWN: RITA ZUO 24 Feb 09
 CHK: ANSON MA 24 Feb 09
 APVD: BOB ZHAO 24 Feb 09

TE Connectivity
BNC STRAIGHT JACK CRIMP
 50 OHM

108-112000
 SEE SHEET 2

SIZE: A2 CAGE CODE: 00779 DRAWING NO: 1634511
 WEIGHT: -

CUSTOMER DRAWING SCALE: NTS SHEET: 1 OF 2 REV: D

THIS DRAWING IS UNPUBLISHED. RELEASED FOR PUBLICATION JUNE ,2004.
 © COPYRIGHT 2004 By - ALL RIGHTS RESERVED.

LOC		DIST		REVISIONS			
P	LTR	DESCRIPTION		DATE	DWN	APVD	
-	-	SEE SHEET 1		-	-	-	

COMPONENTS

MAIN BODY (ITEM 1,3, & 4)	CONTACT (ITEM 2)	PUSHER SLEEVE (ITEM 5)	CRIMP FERRULES (ITEM 6 & 7)

ASSEMBLY INSTRUCTION

CABLES: RG58C/U, 141A/U, URM43, 76, BELDEN 9907, KX 15	CABLES: RG174A/U, 188A/U, 316/U, URM95, KX 3B, KX 22A
<p>STEP 1</p> <p>1. SLIDE METAL CRIMP FERRULE OVER CABLE</p>	<p>STEP 1</p> <p>1. SLIDE METAL CRIMP FERRULE OVER CABLE</p>
<p>STEP 2</p> <p>1. STRIP CABLE TO DIMENSIONS AS SHOWN</p>	<p>STEP 2</p> <p>1. STRIP CABLE TO DIMENSIONS AS SHOWN</p>
<p>STEP 3</p> <p>1. FIT CONTACT OVER CENTRE CONDUCTOR TO BUTT AGAINST DIELECTRIC. 2. CRIMP USING TOOL AS NOTES ON PAGE 1.</p> <p>RECOMMENDED CENTRE CONTACT A/F HEX</p>	<p>STEP 3</p> <p>1. SLIDE ITEM 10 PUSHER SLEEVE OVER DIELECTRIC BEFORE FITTING THE CONTACT. 2. FIT CONTACT OVER CENTRE CONDUCTOR TO BUTT AGAINST DIELECTRIC. 3. CRIMP USING TOOL AS NOTES ON PAGE 1.</p> <p>RECOMMENDED CENTRE CONTACT A/F HEX</p>
<p>STEP 4</p> <p>1. PRESS SUB-ASSEMBLY INTO BODY, UNTIL CONTACT IS FULLY LOCATED BY AN AUDIBLE CLICK. 2. ENSURE THAT KNURLED HOUSING INSERTS BETWEEN THE DIELECTRIC AND CABLE BRAID.</p>	<p>STEP 4</p> <p>1. PRESS SUB-ASSEMBLY INTO BODY, UNTIL CONTACT IS FULLY LOCATED BY AN AUDIBLE CLICK. 2. ENSURE THAT KNURLED HOUSING INSERTS BETWEEN THE PUSHER SLEEVE AND CABLE BRAID.</p>
<p>STEP 5</p> <p>1. SLIDE CRIMP FERRULE ALONG THE CABLE UNTIL IT BUTTS AGAINST THE HOUSING BODY. 2. CRIMP USING TOOL AS NOTED ON PAGE 1. 3. CRIMP DIMENSION AS SHOWN.</p> <p>RECOMMENDED CRIMP SLEEVE A/F HEX</p>	<p>STEP 5</p> <p>1. SLIDE CRIMP FERRULE ALONG THE CABLE UNTIL IT BUTTS AGAINST THE BODY HOUSING. 2. CRIMP USING TOOL AS NOTED ON PAGE 1. 3. CRIMP DIMENSION AS SHOWN.</p> <p>RECOMMENDED CRIMP SLEEVE A/F HEX</p>

THIS DRAWING IS A CONTROLLED DOCUMENT.		DWN RITA ZUO 24 Feb 09	TE Connectivity	
DIMENSIONS: MM		CHK ANSON MA 24 Feb 09		
TOLERANCES UNLESS OTHERWISE SPECIFIED:		APVD BOB ZHAO 24 Feb 09	NAME	
0 PLC ± 0.5		PRODUCT SPEC	BNC STRAIGHT JACK CRIMP	
1 PLC ± 0.3		APPLICATION SPEC	50 OHM	
2 PLC ± 0.2		SHEET 2	SIZE	DRAWING NO
3 PLC ± -		WEIGHT -	A2	00779
4 PLC ± -		CUSTOMER DRAWING	CAGE CODE	C=1634511
ANGLES ± -		SCALE NTS	SHEET	2 of 2
FINISH		RESTRICTED TO	REV D	
SEE TABLE				

1634511

A