



Chipsmall Limited consists of a professional team with an average of over 10 year of expertise in the distribution of electronic components. Based in Hongkong, we have already established firm and mutual-benefit business relationships with customers from,Europe,America and south Asia,supplying obsolete and hard-to-find components to meet their specific needs.

With the principle of “Quality Parts,Customers Priority,Honest Operation,and Considerate Service”,our business mainly focus on the distribution of electronic components. Line cards we deal with include Microchip,ALPS,ROHM,Xilinx,Pulse,ON,Everlight and Freescale. Main products comprise IC,Modules,Potentiometer,IC Socket,Relay,Connector.Our parts cover such applications as commercial,industrial, and automotives areas.

We are looking forward to setting up business relationship with you and hope to provide you with the best service and solution. Let us make a better world for our industry!



Contact us

Tel: +86-755-8981 8866 Fax: +86-755-8427 6832

Email & Skype: info@chipsmall.com Web: www.chipsmall.com

Address: A1208, Overseas Decoration Building, #122 Zhenhua RD., Futian, Shenzhen, China



4

3

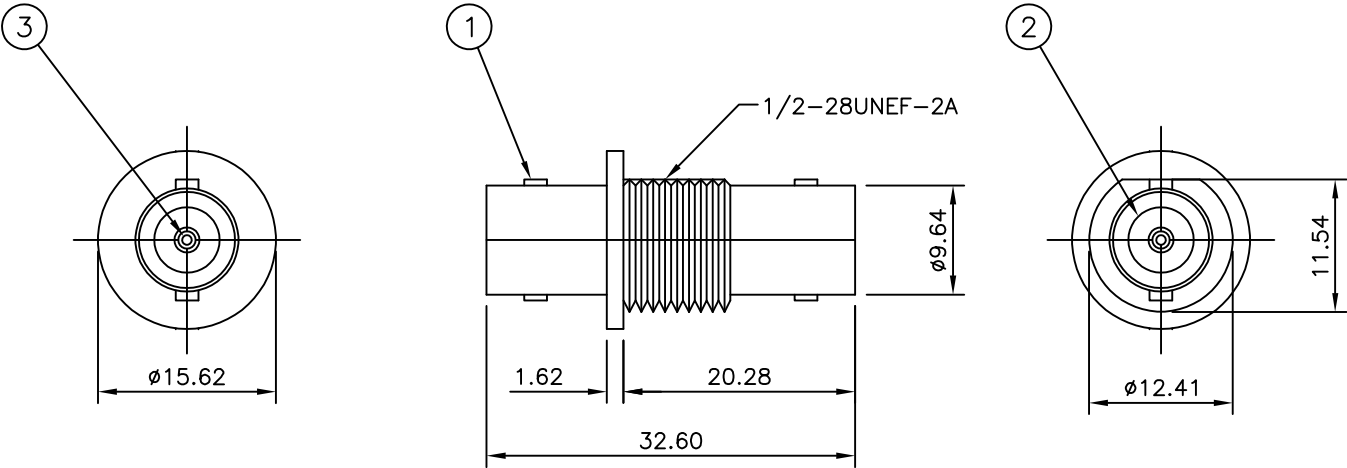
2

1

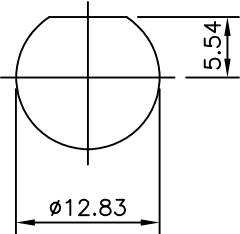
LOC E	DIST B	REVISIONS					
		P	LTR	DESCRIPTION	DATE	DWN	APVD
			C1	REVISED PER ECO-11-005033	01APR11	RK	HMR
			D	REVISED PER ECO-12-010042	29MAY2012	TITAN	MARTIN

NOTES


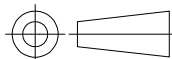
- 1 100 TRAY PACK IN ACCORDANCE WITH AMP SPEC 107-3275
- 2 SINGLE PACK IN ACCORDANCE WITH AMP SPEC 107-3275
- 3 GOLD PLATING
- 4 NICKEL PLATING
5. RECOMMENDED MOUNT NUT 1-1634816-0
6. RECOMMENDED LOCKWASHER 1-1634817-0
7. FOR TECHNICAL DATA REFER TO YOUR LOCAL TE CONNECTIVITY SALES OFFICE
8. ALL DIMENSIONS ARE NOMINAL FOR REFERENCE ONLY UNLESS OTHERWISE STATED



RECOMMENDED
PANEL CUTOUT
DIMENSIONS



								Obsolete					
						1	1		PHOS BRONZE	△3	CONTACT	3	
							1		1	POLYMETHYLPENTENE		INSULATOR	2
							1		1	ZINC ALLOY	△4	BODY	1
						5--1	5--0		MATERIAL		DESCRIPTION	ITEM	
						△2	△1						
QUANTITY PER ASSY								PARTS LIST					

THIS DRAWING IS A CONTROLLED DOCUMENT.		DWN Rita Zuo 14 Feb 09		<div>TE Connectivity</div>			
		CHK Anson Ma 14 Feb 09					
DIMENSIONS: mm		TOLERANCES UNLESS OTHERWISE SPECIFIED:		APVD Bob Zhao 14 Feb 09		NAME	
		0 PLC ± 0.5		BNC BULKHEAD ADAPTOR JACK – JACK — —			
		1 PLC ± 0.3					
		2 PLC ± 0.2					
		3 PLC ± —		PRODUCT SPEC 108–112000			
		4 PLC ± —					
		ANGLES ± —		APPLICATION SPEC			
				—		SIZE	
MATERIAL		FINISH		WEIGHT —		CAGE CODE	
SEE TABLE		—				DRAWING NO	
				A3		00779	
				CUSTOMER DRAWING		C–1634530	
						RESTRICTED TO	
						—	
						SCALE	
						NTS	
						SHEET	
						1 OF 1	
						REV	
						D	