



Chipsmall Limited consists of a professional team with an average of over 10 year of expertise in the distribution of electronic components. Based in Hongkong, we have already established firm and mutual-benefit business relationships with customers from,Europe,America and south Asia,supplying obsolete and hard-to-find components to meet their specific needs.

With the principle of “Quality Parts,Customers Priority,Honest Operation,and Considerate Service”,our business mainly focus on the distribution of electronic components. Line cards we deal with include Microchip,ALPS,ROHM,Xilinx,Pulse,ON,Everlight and Freescale. Main products comprise IC,Modules,Potentiometer,IC Socket,Relay,Connector.Our parts cover such applications as commercial,industrial, and automotives areas.

We are looking forward to setting up business relationship with you and hope to provide you with the best service and solution. Let us make a better world for our industry!



## Contact us

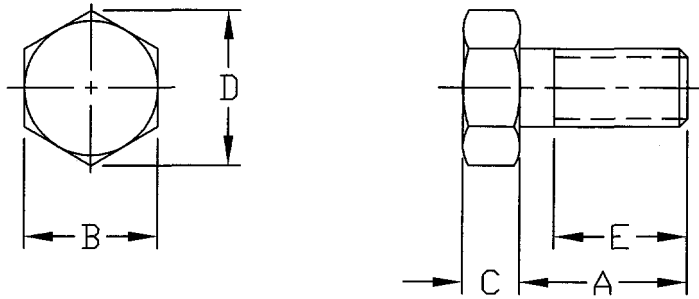
Tel: +86-755-8981 8866 Fax: +86-755-8427 6832

Email & Skype: info@chipsmall.com Web: www.chipsmall.com

Address: A1208, Overseas Decoration Building, #122 Zhenhua RD., Futian, Shenzhen, China



1. PART NUMBER AND CHARACTERISTICS



TE Part No	Rev	Thread	A	B	C	D	E
18022-1	B	M5	8	8	3.5	8.79	8
18022-2	B	M5	10	8	3.5	8.79	10
18022-3	B	M5	12	8	3.5	8.79	12
18022-4	B	M5	16	8	3.5	8.79	16
18022-5	B	M5	20	8	3.5	8.79	16
18022-6	B	M5	25	8	3.5	8.79	16
18022-7	B	M5	30	8	3.5	8.79	16
18022-8	B	M5	40	8	3.5	8.79	16
18022-9	B	M5	50	8	3.5	8.79	16
1-18022-0	B	M6	10	10	4	11.05	10
1-18022-1	B	M6	12	10	4	11.05	12
1-18022-2	B	M6	16	10	4	11.05	16
1-18022-3	A	M6	20	10	4	11.05	18
1-18022-4	A	M6	25	10	4	11.05	18
1-18022-5	A	M6	30	10	4	11.05	18
1-18022-6	A	M6	40	10	4	11.05	18
1-18022-7	A	M6	50	10	4	11.05	18
1-18022-8	A	M6	60	10	4	11.05	18
1-18022-9	A	M6	70	10	4	11.05	18
2-18022-0	B	M8	16	13	5.3	14.38	16
2-18022-1	B	M8	20	13	5.3	14.38	20
2-18022-2	B	M8	25	13	5.3	14.38	22
2-18022-3	B	M8	30	13	5.3	14.38	22
2-18022-4	B	M8	40	13	5.3	14.38	22
2-18022-5	B	M8	50	13	5.3	14.38	22

<b>COMMERCIAL ITEM SPECIFICATION</b>		MATERIAL					
		See Note 1.2.					
© 2010 Tyco Electronics Corporation, Berwyn, PA All Rights Reserved		FINISH		<b>18022</b>			
		Black Oxide					
REV G    LOC B    DIST 31				DIMENSIONS IN mm		NO	
		SHEET 1 OF 2		TITLE <b>SCREW, CAP, HEX HEAD, METRIC SERIES</b>			
G	Add -55	JNB	11NOV10				
REV	ENGINEERING CHANGE	CHK	DATE				

1. PART NUMBER AND CHARACTERISTICS (Continued)

TE Part No	Rev	Thread	A	B	C	D	E
2-18022-6	B	M8	60	13	5.3	14.38	22
2-18022-7	B	M8	70	13	5.3	14.38	22
2-18022-8	B	M8	80	13	5.3	14.38	22
2-18022-9	B	M8	90	13	5.3	14.38	22
3-18022-0	B	M10	16	16	6.4	17.77	16
3-18022-1	B	M10	20	16	6.4	17.77	20
3-18022-2	B	M10	25	16	6.4	17.77	25
3-18022-3	B	M10	30	16	6.4	17.77	26
3-18022-4	B	M10	40	16	6.4	17.77	26
3-18022-5	B	M10	50	16	6.4	17.77	26
3-18022-6	B	M10	60	16	6.4	17.77	26
3-18022-7	B	M10	70	16	6.4	17.77	26
3-18022-8	B	M10	80	16	6.4	17.77	26
3-18022-9	B	M10	90	16	6.4	17.77	26
4-18022-0	B	M10	100	16	6.4	17.77	26
4-18022-1	B	M12	20	18	7.5	20.03	20
4-18022-2	B	M12	25	18	7.5	20.03	25
4-18022-3	B	M12	30	18	7.5	20.03	30
4-18022-4	B	M12	40	18	7.5	20.03	30
4-18022-5	B	M12	50	18	7.5	20.03	30
4-18022-6	B	M12	60	18	7.5	20.03	30
4-18022-7	B	M12	70	18	7.5	20.03	30
4-18022-8	B	M12	80	18	7.5	20.03	30
4-18022-9	B	M12	90	18	7.5	20.03	30
5-18022-0	B	M12	100	18	7.5	20.03	30
5-18022-1	B	M3	16	5.5	2	6.01	12
5-18022-2	C	M4	8	7	2.8	7.66	8
5-18022-3	D	M4	12	7	2.8	7.66	12
5-18022-4	F	M3	6	5.5	2	6.01	6
5-18022-5	G	M4	6	7	2.8	7.66	6

- 1.1. Shall comply with DIN 931/933 and ISO 4014/4017
- 1.2. Material shall be carbon steel that meets or exceeds ISO Standard 898/1, Class 8.8
- 2. MANUFACTURER  
None



Tyco Electronics  
Corporation  
Berwyn, PA

SHEET  
2 OF 2

NO

**18022**

REV  
**G**

LOC  
**B**

DIST  
**31**