



Chipsmall Limited consists of a professional team with an average of over 10 year of expertise in the distribution of electronic components. Based in Hongkong, we have already established firm and mutual-benefit business relationships with customers from,Europe,America and south Asia,supplying obsolete and hard-to-find components to meet their specific needs.

With the principle of “Quality Parts,Customers Priority,Honest Operation,and Considerate Service”,our business mainly focus on the distribution of electronic components. Line cards we deal with include Microchip,ALPS,ROHM,Xilinx,Pulse,ON,Everlight and Freescale. Main products comprise IC,Modules,Potentiometer,IC Socket,Relay,Connector.Our parts cover such applications as commercial,industrial, and automotives areas.

We are looking forward to setting up business relationship with you and hope to provide you with the best service and solution. Let us make a better world for our industry!



Contact us

Tel: +86-755-8981 8866 Fax: +86-755-8427 6832

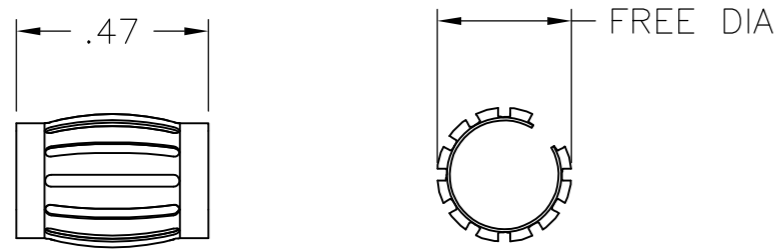
Email & Skype: info@chipsmall.com Web: www.chipsmall.com

Address: A1208, Overseas Decoration Building, #122 Zhenhua RD., Futian, Shenzhen, China

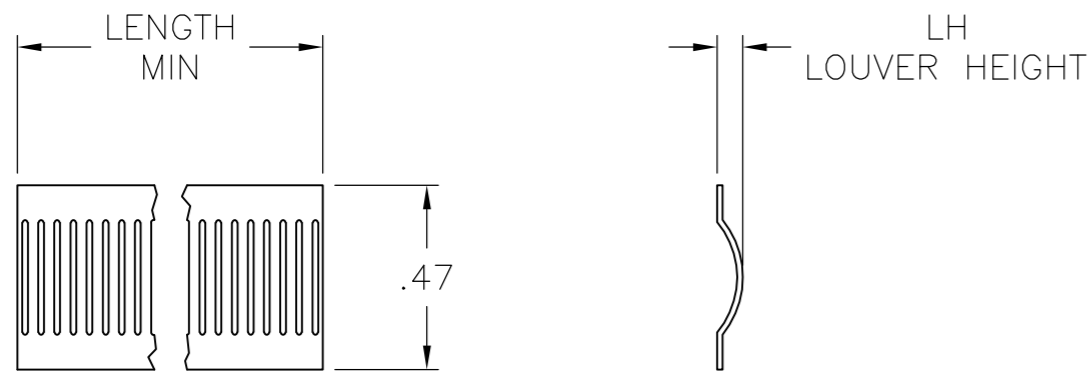


THIS DRAWING IS UNPUBLISHED. RELEASED FOR PUBLICATION
 © COPYRIGHT BY TYCO ELECTRONICS CORPORATION. ALL RIGHTS RESERVED.

LOC	DIST	REVISIONS					
		P	LTR	DESCRIPTION	DATE	DWN	APVD
FT	0		K	REVISED PER 0G3B-0891-03	11/20/03	SS	GS
			K1	REVISED PER ECO-09-020935	08SEP09	KK	AEG



STYLE B
(MALE)



STYLE C
(STRIP)

NOTES:

1. FINISH: SILVER PLATE 200 uIN MIN THICK.
2. FINISH: NICKEL PLATE 40 u IN MIN THICK.
3. FINISH: GOLD PLATE 10 uIN MIN THICK.
4. FINISH: NICKEL PLATE 50 uIN MIN THICK.
5. FINISH: NICKEL PLATE 100 uIN MIN THICK.
6. NOT USED.
7. NOT USED.
8. NOT USED.
9. NOT USED.
10. NOT USED.
11. PLATING NOTES ARE TO BE INTERPRETED AS FOLLOWS, 6-8 AS 6 OVER 8.
12. MATERIAL: CDA172, BeCu.
13. MATERIAL: STAINLESS STEEL.

- 14 PRODUCT IS SOLD BY THE FOOT.
- 15 FINISH: PREPLATED SILVER 200 uIN MIN, OVER NICKEL .040 uIN MIN.
- 16 REELED PRODUCT.
- 17 PRELIMINARY PART NUMBER.
- 18 OBSOLETE PART NUMBER.
- 19 OBSOLETEPARTS: OBSOLETE CIS STREAMLINING PER D.RENAUD/D.SINISI

18	19	STYLE	LH	FREE DIA	MAT'L (NOTE)	MATING DIA REF	PLATING	NUM LOUV	MAT'L THK	REF	PART NUMBER			
18											03088 4-192039-5			
18											03087 4-192039-4			
18											03051 4-192039-3			
18											03050 4-192039-2			
	19	B		[.036]	[.58]	12	16.51	[.650]	UNPL	43	0.20	[.008]	03119 4-192039-1	
	19	B		[.032]	[.58]	12	14.22	[.560]	1-2	43	0.15	[.006]	03124 4-192039-0	
	18												3-192039-9	
	19	B		[.038]	[.46]	12	12.7	[.500]		34	0.20	[.008]	03122 3-192039-8	
	19	B		[.038]	[.46]	12	12.7	[.500]	1-2	34	0.20	[.008]	03121 3-192039-7	
	19	B		[.038]	[.46]	12	12.7	[.500]	UNPL	34	0.20	[.008]	03048 3-192039-6	
	19	B		[.032]	[.46]	12	12.7	[.500]	1-2		0.15	[.006]	03129 3-192039-5	
	19	B		[.032]	[.46]	12	12.7	[.500]	UNPL	34	0.15	[.006]	03110 3-192039-4	
	19	B		[.034]	[.33]	12	9.52	[.375]	1-2	24	0.20	[.008]	03148 3-192039-3	
	19												03042 3-192039-2	
	18	SUPERSEDED BY 2-192039-7										03041 3-192039-1		
		B		[.036]	[.31]	12	7.9	[.311]	3-2	21	0.20	[.008]	03082 3-192039-0	
		B		[.036]	[.31]	12	7.9	[.311]	1-2	21	0.20	[.008]	03036 2-192039-9	
	19												03035 2-192039-8	
	19	B		[.036]	[.31]	12	7.9	[.311]	UNPL	21	0.20	[.008]	03066 2-192039-7	
	19	B		[.036]	[.30]	12	7.37	[.291]	UNPL	20	0.20	[.008]	03120 2-192039-6	
	18												03034 2-192039-5	
	18												03030 2-192039-4	
		B		[.036]	[.30]	12	6.3	[.248]	1-2	17	0.20	[.008]	03027 2-192039-3	
		B		[.036]	[.30]	12	6.3	[.248]	UNPL	17	0.20	[.008]	03026 2-192039-2	
		B		[.033]	[.27]	12	6.3	[.248]	1-2	16	0.20	[.008]	03140 2-192039-1	
	19	B		[.033]	[.27]	12	6.3	[.248]	UNPL	16	0.20	[.008]	03139 2-192039-0	
	19	B		[.036]	[.25]	12	6.0	[.236]	3-2	15	0.20	[.008]	03024 1-192039-9	
	19	B		[.034]	[.20]	12	4.0	[.157]	4	9	0.20	[.008]	03017 1-192039-8	
		B		[.034]	[.20]	12	4.0	[.157]	3-2	9	0.20	[.008]	03016 1-192039-7	
		B		[.034]	[.20]	12	4.0	[.157]	UNPL	9	0.20	[.008]	03071 1-192039-6	
													03015 1-192039-5	
	19	B		[.032]	[.20]	12	4.0	[.157]	3-2	9	0.15	[.006]	03014 1-192039-4	
		B		[.032]	[.20]	12	4.0	[.157]	4	9	0.15	[.006]	03128 1-192039-3	
		B		[.032]	[.20]	12	4.0	[.157]	UNPL	9	0.15	[.006]	03073 1-192039-2	
	19	B		[.020]	[.20]	13	4.0	[.157]	UNPL	9	0.12	[.005]	03091 1-192039-1	
	14	C		[.038]		12							03115 1-192039-0	
	18					12							192039-9	
	19	14	C	[.038]		12				1-2		0.20	[.008]	03116 192039-8
	19	14	C	[.038]		12				UNPL		0.20	[.008]	03078 192039-7
	19	14	C	[.034]		12				3-2		0.15	[.006]	03003 192039-6
		14	C	[.034]		12				1-2		0.15	[.006]	03094 192039-5
		14	C	[.034]		12				UNPL		0.15	[.006]	03057 192039-4
	19	14	C	[.020]		13				UNPL		0.12	[.005]	03138 192039-3
	19												03079 192039-2	
	18												03067 192039-1	

THIS DRAWING IS A CONTROLLED DOCUMENT. DWN 09-12-91 RA JAYNE
 CHK 09-12-91 RA JAYNE
 APVD -
 PRODUCT SPEC -
 APPLICATION SPEC -
 WEIGHT -
 CUSTOMER DRAWING

TOLERANCES UNLESS OTHERWISE SPECIFIED:
 0 PLC ± -
 1 PLC ± -
 2 PLC ± .02
 3 PLC ± .010
 4 PLC ± -
 ANGLES ± -
 FINISH -

MATERIAL SEE TABLE

Tyco Electronics Corporation
 Harrisburg, PA 17105
 CONTACT BAND, LAIIS, MALE
 SIZE A2 CAGE CODE 00779 DRAWING NO 192039 RESTRICTED TO -
 SCALE NTS SHEET 1 OF 2 REV K1

LOC	DIST	REVISIONS					
FT	0	P	LTR	DESCRIPTION	DATE	DWN	APVD
		K		SEE SHEET 1	-	-	-

STYLE	LH	FREE DIA	MATL (NOTE)	MATING φ	REF	PLATING	NUM LOUV	MAT'L THK	REF	PART NO.
Δ 19	OBSOLETE	B	[.038]	[.46]	12	12.7[.500]	3-2	34	0.20[.008]	-- 5-192039-9
Δ 16	Δ 17	C	[.034]	--	12	--	15	--	.006	-- 5-192039-8
		B	[.036]	[.25]	12	6.0[.236]	UNPL	15	.008	-- 5-192039-7
		B	[.036]	[.33]	12	9.52[.375]	UNPL	24	.008	-- 5-192039-6
		B	[.032]	[.58]	12	14.22[.560]	UNPL	43	.006	-- 5-192039-5
		B	[.033]	[.20]	12	4.0[.157]	5	9	0.20[.008]	-- 5-192039-4
		B	[.033]	[.20]	12	6.0[.236]	5	16	0.20[.008]	-- 5-192039-3
SUPERSEDED BY 2-192039-0										
		B	[.036]	[1.71]	12	44.78[1.763]	3-2	130	0.15[.006]	-- 5-192039-1
Δ 19	OBSOLETE	B	[.034]	[3.50]	12	98.55[3.880]	UNPL	92	0.15[.006]	03126 5-192039-0
Δ 18	NOT AVAILABLE				--	--	--	--	03084	4-192039-9
Δ 19		B	[.036]	[1.91]	12	50.8[2.000]	UNPL	145	0.20[.008]	03096 4-192039-8
		B	[.036]	[1.71]	12	44.78[1.763]	1-2	130	0.15[.006]	03125 4-192039-7
OBSOLETE		B	[.036]	[1.71]	12	44.78[1.763]	UNPL	130	0.15[.006]	03145 4-192039-6

THIS DRAWING IS A CONTROLLED DOCUMENT.

TOLERANCES UNLESS OTHERWISE SPECIFIED:

DIMENSIONS INCHES	0 PLC ± -	DWN 11-04-91 RA JAYNE	Tyco Electronics Corporation Harrisburg, PA 17105
	1 PLC ± -	CHK 11-04-91 RA JAYNE	CONTACT BAND, LAIIS, MALE
	2 PLC ± .02	APVD -	SIZE CAGE CODE DRAWING NO RESTRICTED TO
	3 PLC ± .010	PRODUCT SPEC	A2 00779 C=192039 -
	4 PLC ± -	APPLICATION SPEC	SCALE SHEET OF REV
ANGLES ± -		WEIGHT -	NTS 2 2 K1
MATERIAL FINISH	SEE TABLE	CUSTOMER DRAWING	