



Chipsmall Limited consists of a professional team with an average of over 10 year of expertise in the distribution of electronic components. Based in Hongkong, we have already established firm and mutual-benefit business relationships with customers from,Europe,America and south Asia,supplying obsolete and hard-to-find components to meet their specific needs.

With the principle of "Quality Parts,Customers Priority,Honest Operation,and Considerate Service",our business mainly focus on the distribution of electronic components. Line cards we deal with include Microchip,ALPS,ROHM,Xilinx,Pulse,ON,Everlight and Freescale. Main products comprise IC,Modules,Potentiometer,IC Socket,Relay,Connector.Our parts cover such applications as commercial,industrial, and automotives areas.

We are looking forward to setting up business relationship with you and hope to provide you with the best service and solution. Let us make a better world for our industry!



Contact us

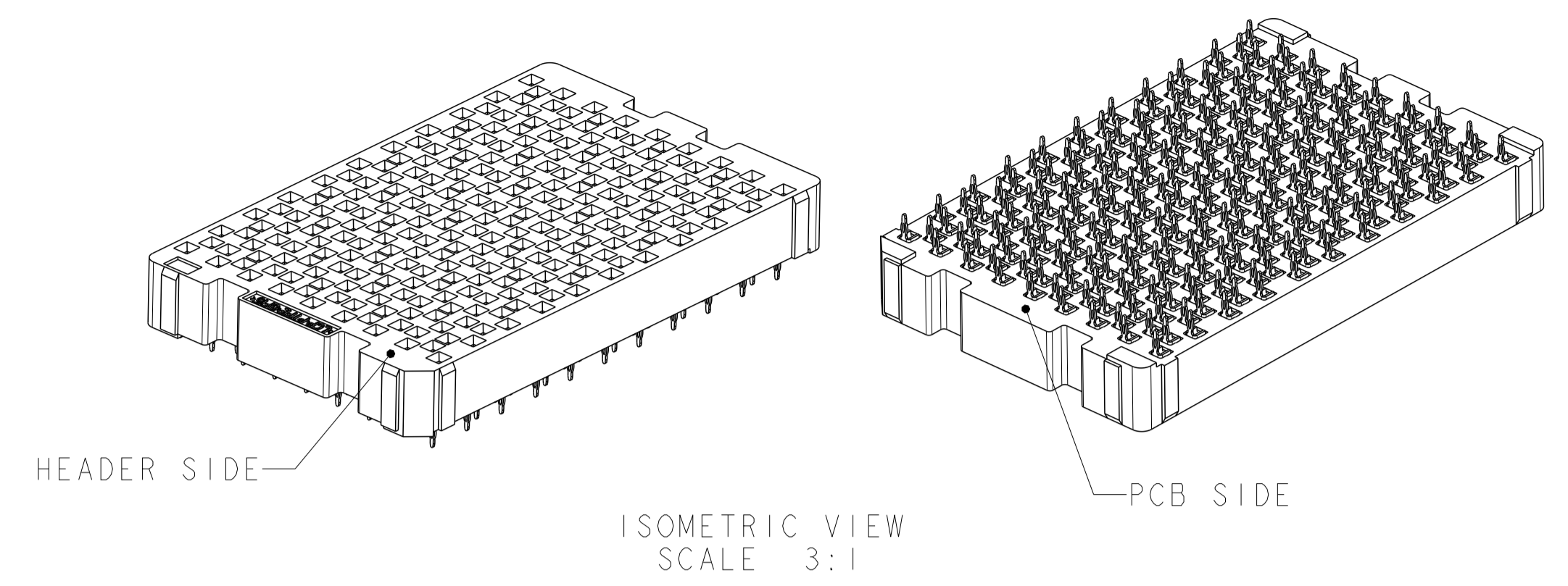
Tel: +86-755-8981 8866 Fax: +86-755-8427 6832

Email & Skype: info@chipsmall.com Web: www.chipsmall.com

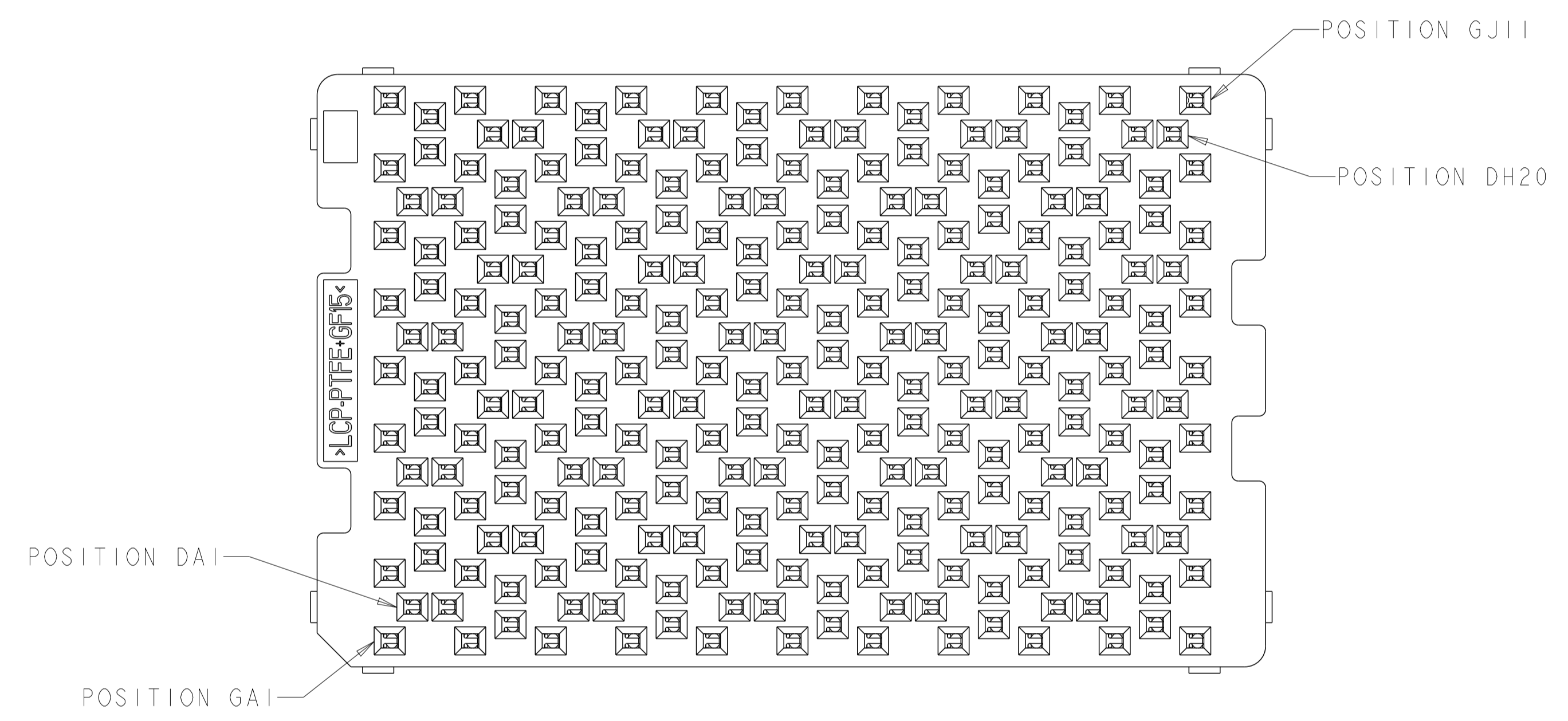
Address: A1208, Overseas Decoration Building, #122 Zhenhua RD., Futian, Shenzhen, China



LOC	DIST	REVISIONS			
GP	00	REV	DATE	BY	APPV
		A	REVISED PER ECO-12-018201	17OCT2012	KH MH

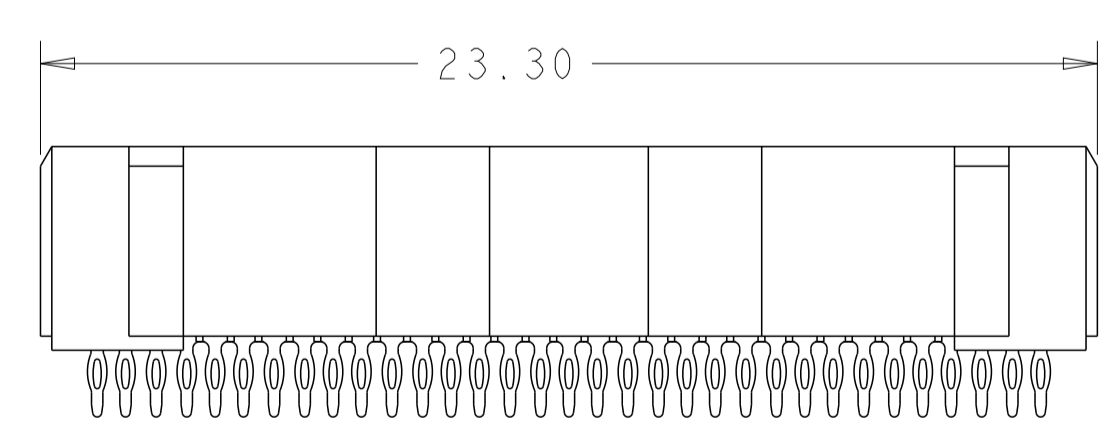
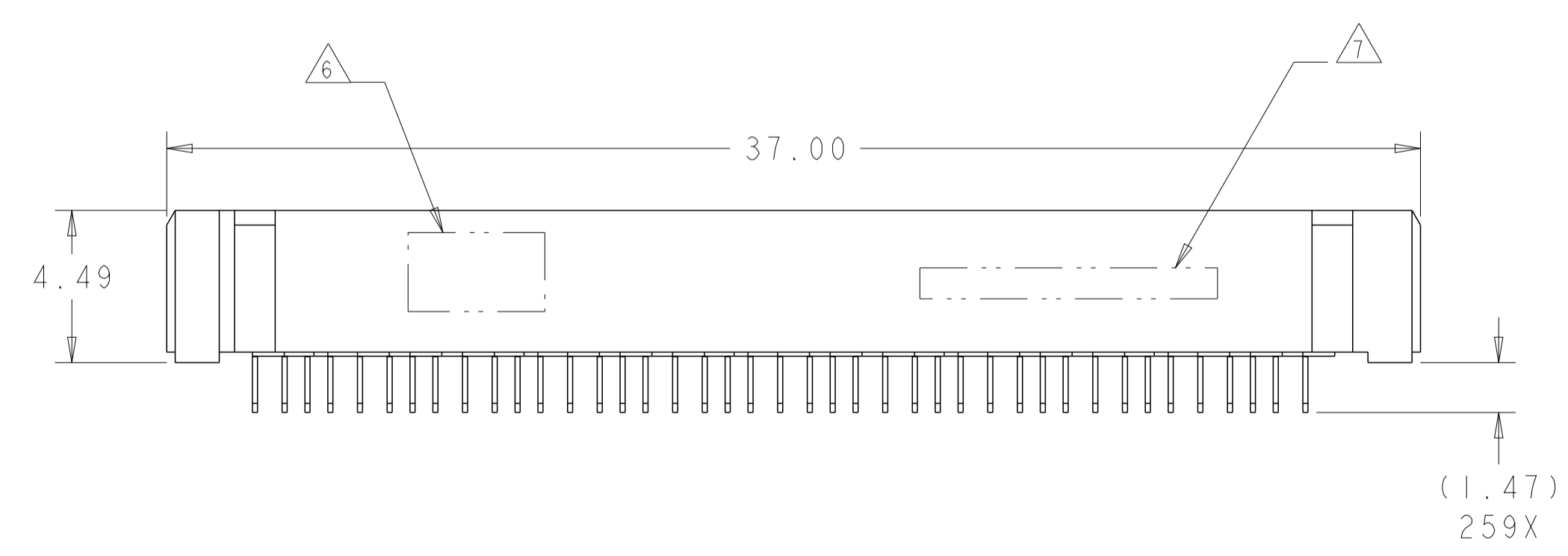


- 1 MATERIAL:
HOUSING: THERMOPLASTIC, FLAMMABILITY RATING UL94-VO
CONTACT: COPPER ALLOY
- 2 CONTACT PLATING: 0.076µm MIN GOLD OVER 0.69µm MIN PALLADIUM NICKEL, OVER 2.54-5.08µm NICKEL ON MATING AREA. 0.50-2.54µm 93/7 TIN-LEAD, OVER 1.27-5.08µm NICKEL ON TAIL AREA. PORE BLOCKER APPLIED TO MATING AREA.
- 3 CONTACT PLATING: 0.076µm MIN GOLD OVER 0.69µm MIN PALLADIUM NICKEL, OVER 2.54-5.08µm NICKEL ON MATING AREA. 0.50-2.54µm MATTE TIN, OVER 1.27-5.08µm NICKEL ON TAIL AREA. PORE BLOCKER APPLIED TO MATING AREA.
- 4 ROWS GA THRU GJ (SHOWN DARKENED) ARE TYPICALLY USED AS GROUNDS.
- 5 SPECIFIED POSITIONAL TOLERANCE DEFINES HOLE TO HOLE LOCATION WITHIN HOLE PATTERN. POSITIONAL TOLERANCE OF HOLE PATTERN TO FIDUCIAL MARKS OR PCB DATUMS SHALL BE DEFINED BY CUSTOMER.
- 6 AREA RESERVED FOR TE CONNECTIVITY LOGO.
- 7 AREA RESERVED FOR PART NUMBER (X-XXXXXXX-X) AND DATE CODE (YYWW).
- 8 USE CENTERLINES INDICATED ON PCB HOLE PATTERN TO ESTABLISH ALIGNMENT BETWEEN HEADER AND RECEPTACLE BOARDS.
- 9 PLATED THROUGH HOLE REQUIREMENTS:
HOLE SIZE PRIOR TO PLATING = $\varnothing 0.420 \pm 0.013$
COPPER PLATING THICKNESS = 0.038 ± 0.013
CALCULATED FINISHED HOLE SIZE = $\varnothing 0.344 \pm 0.039$
THESE DIMENSIONS APPLY TO THE TOP 1.25mm OF THE PCB THICKNESS FROM THE CONNECTOR MOUNTING SIDE.



SIZE 2 HOUSING *
80 DIFFERENTIAL PAIRS
259 TOTAL SIGNAL CONTACTS

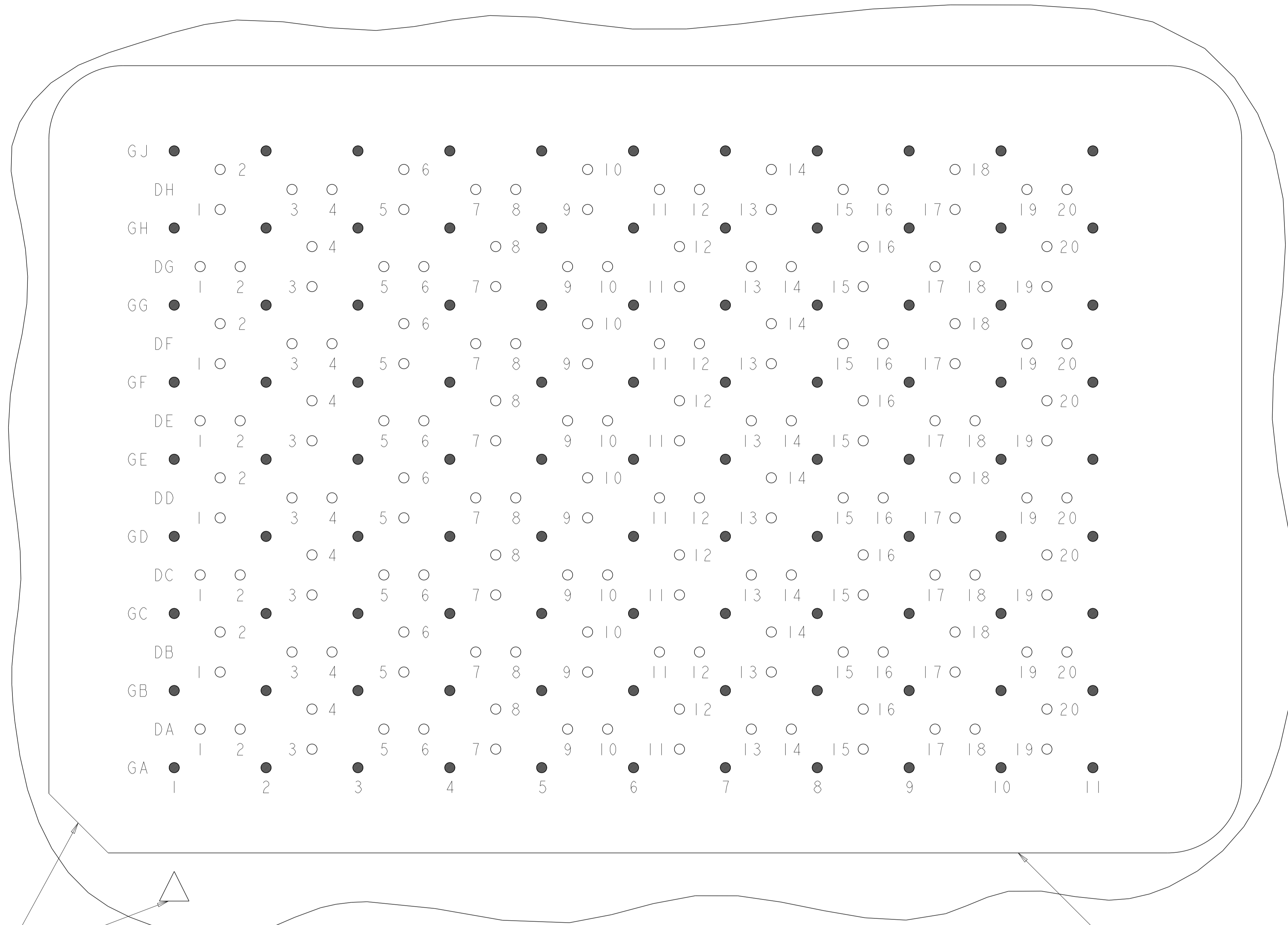
* SIZE 1 AND SIZE 3 ARE ALSO AVAILABLE



3	YES	MATTE Sn	5-2057361-1
2		Sn/Pb	2057361-1
FINISH	TOOLED	CONTACT TAIL PLATING	PART NUMBER

THIS DRAWING IS A CONTROLLED DOCUMENT.		DWN D. RINGLER 03SEP2008	TE Connectivity	
DIMENSIONS:		CHK D. TROUT 03SEP2008	NAME	
TOLERANCES UNLESS OTHERWISE SPECIFIED:		APPV J. FEDDER 03SEP2008	RECEPTACLE ASSEMBLY	
mm	0 PLC ±	PRODUCT SPEC	80/259 SIGNAL	
	1 PLC ±0.13	APPLICATION SPEC	STRADA MESA MEZZANINE CONNECTOR	
	2 PLC ±0.013	SIZE CAGE CODE DRAWING NO	RESTRICTED TO	
	3 PLC ±	108-2375	A100779C=2057361	
	4 PLC ±	114-13249	SCALE 6:1 SHEET 1 OF 3 REV A	
	ANGLES ±	WEIGHT		
	FINISH	Customer Drawing		


LOC	DIST	REVISIONS			
P	LYN	DESCRIPTION	DATE	OWN	APVD
-	-	SEE SHEET 1	-	-	-



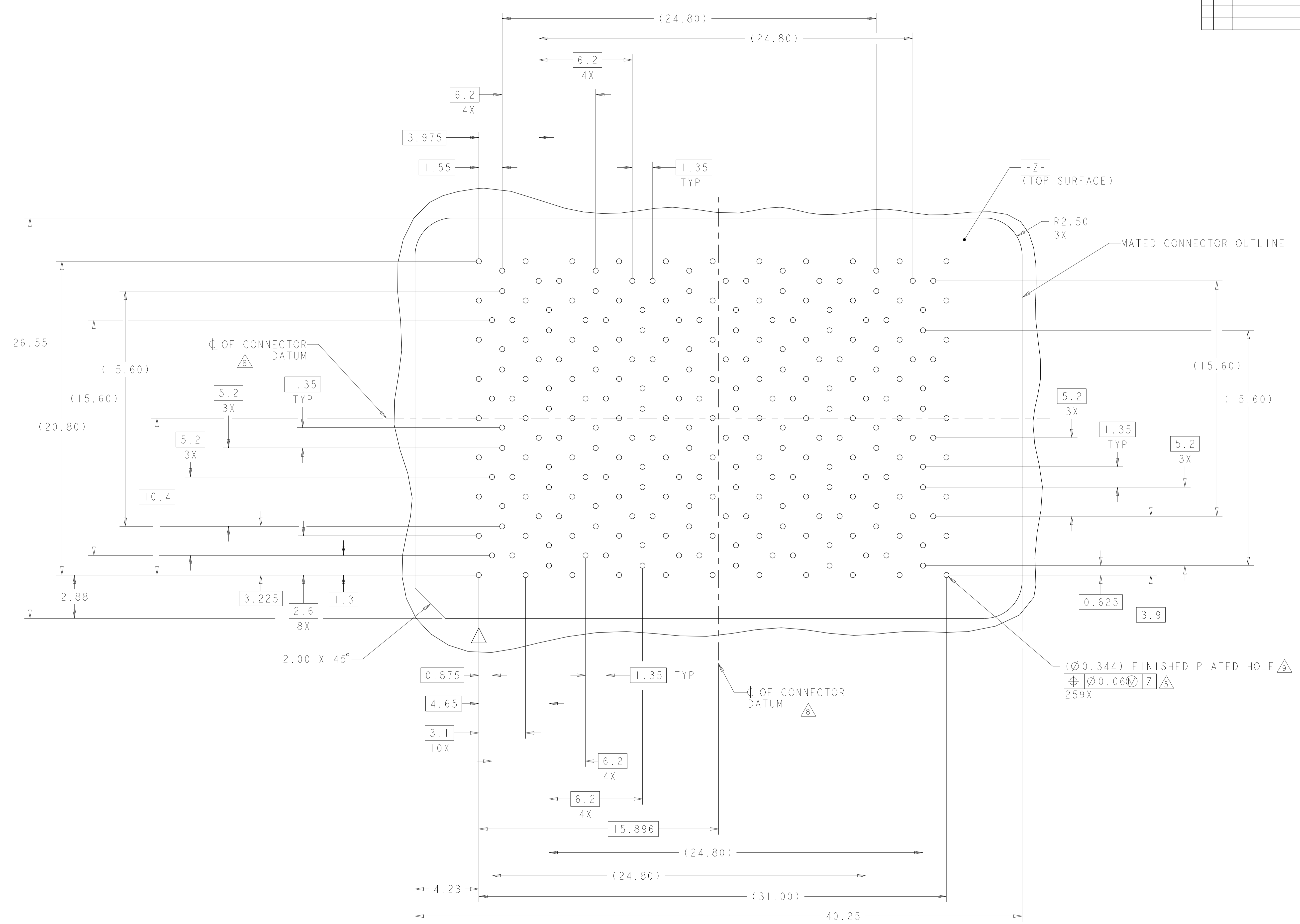
A1 CORNER INDICATORS.

MATED CONNECTOR OUTLINE SEE SHEET 3 FOR LOCATION TO HOLES

PCB LAYOUT AND PIN IDENTIFICATION 
 SHOWN FROM CONNECTOR SIDE
 SCALE 12:1

THIS DRAWING IS A CONTROLLED DOCUMENT.		DWN D. RINGLER 03SEP2008	 TE Connectivity
DIMENSIONS:		CHK D. TROUT 03SEP2008	
mm	TOLERANCES UNLESS OTHERWISE SPECIFIED:	APVD J. FEEDER 03SEP2008	NAME RECEPTACLE ASSEMBLY
0 PLC ±	1 PLC ±	PRODUCT SPEC	80/259 SIGNAL
2 PLC ±0.13	3 PLC ±0.013	APPLICATION SPEC	STRADA MESA MEZZANINE CONNECTOR
4 PLC ±	ANGLES ±1	SIZE CAGE CODE DRAWING NO	RESTRICTED TO
MATERIAL	FINISH	WEIGHT	A100779C=2057361
Customer Drawing		SCALE 6:1	SHEET 2 OF 3 REV A

LOC		DIST		REVISIONS			
GP	00	P	LYR	DESCRIPTION	DATE	OWN	APVD
		-		SEE SHEET 1			



PCB HOLE PATTERN
 SHOWN FROM CONNECTOR SIDE
 SCALE 8:1

THIS DRAWING IS A CONTROLLED DOCUMENT.		OWN D. RINGLER 03SEP2008	TE Connectivity
DIMENSIONS:		CHK D. TROUT 03SEP2008	
mm	TOLERANCES UNLESS OTHERWISE SPECIFIED:	APVD J. FEDDER 03SEP2008	NAME RECEPTACLE ASSEMBLY
	0 PLC ± 2 PLC ±0.13 3 PLC ±0.013 4 PLC ± ANGLES ±1	PRODUCT SPEC 108-2375	80/259 SIGNAL
MATERIAL	FINISH	APPLICATION SPEC 114-13249	STRADA MESA MEZZANINE CONNECTOR
		WEIGHT	SIZE A100779C=2057361
		Customer Drawing	RESTRICTED TO
		SCALE 6:1	SHEET 3 OF 3
			REV A