



Chipsmall Limited consists of a professional team with an average of over 10 year of expertise in the distribution of electronic components. Based in Hongkong, we have already established firm and mutual-benefit business relationships with customers from,Europe,America and south Asia,supplying obsolete and hard-to-find components to meet their specific needs.

With the principle of “Quality Parts,Customers Priority,Honest Operation,and Considerate Service”,our business mainly focus on the distribution of electronic components. Line cards we deal with include Microchip,ALPS,ROHM,Xilinx,Pulse,ON,Everlight and Freescale. Main products comprise IC,Modules,Potentiometer,IC Socket,Relay,Connector.Our parts cover such applications as commercial,industrial, and automotives areas.

We are looking forward to setting up business relationship with you and hope to provide you with the best service and solution. Let us make a better world for our industry!



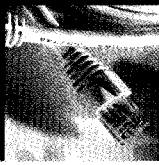
Contact us

Tel: +86-755-8981 8866 Fax: +86-755-8427 6832

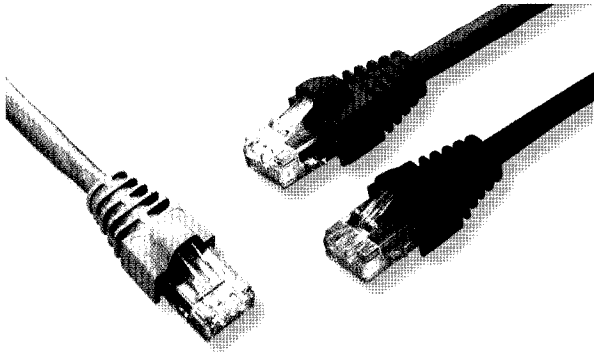
Email & Skype: info@chipsmall.com Web: www.chipsmall.com

Address: A1208, Overseas Decoration Building, #122 Zhenhua RD., Futian, Shenzhen, China





Category 6 Patch Cable Assemblies



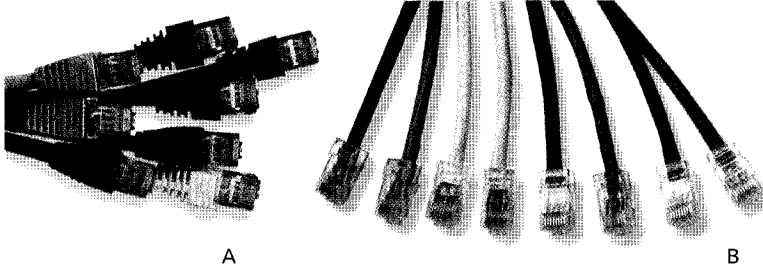
Product Facts

- :: Meet or exceed Category 6 performance standards
- :: 4-Pair stranded Unshielded or Shielded, 24 AWG conductors
- :: Non-plenum (CMR rated)
- :: Shielded cable Assembly is available in white only
- :: Color-matched snagless boots
- :: Universal wiring (T568A/T568B)

Description	Part Number									
	Black	Gray	Blue	Green	Red	White	Yellow	Orange	Violet	
Standard Unshielded	219884-X	219885-X	219886-X	219887-X	219888-X	219889-X	219890-X	219891-X	1499023-X	
Standard Shielded	-	-	-	-	-	1499480-X	-	-	-	

X denotes length in feet: -2 = 2, -3 = 3, -4 = 4, -5 = 5, -6 = 6, -7 = 7, -8 = 8, -9 = 9, 1-0 = 10, 1-2 = 12, 1-4 = 14, 1-5 = 15, 1-6 = 16, 2-0 = 20, 2-5 = 25, 3-0 = 30, 4-0 = 40, 5-0 = 50

Category 5e Patch Cable Assemblies



Product Facts

- :: Meet or exceed Category 5e performance standards
- :: 4-Pair stranded unshielded, 24 AWG conductors
- :: Non-Plenum (CMR rated)
- :: Booted cable assemblies include color-matched snagless boots
- :: Universal wiring (T568A/T568B)

Description	Figure	Part Number									
		Black	Gray	Blue	Green	Red	White	Yellow	Orange	Violet	
Booted	A	406483-X	219241-X	219242-X	219243-X	219244-X	219245-X	219246-X	219184-X	1499094-X	
Bootless	B	1499110-X	1499111-X	1499112-X	1499113-X	1499114-X	1499115-X	1499116-X	1499117-X	1499118-X	

X denotes length in feet: -2 = 2, -3 = 3, -4 = 4, -5 = 5, -6 = 6, -7 = 7, -8 = 8, -9 = 9, 1-0 = 10, 1-2 = 12, 1-4 = 14, 1-5 = 15, 1-6 = 16, 2-0 = 20, 2-5 = 25, 3-0 = 30, 4-0 = 40, 5-0 = 50