



Chipsmall Limited consists of a professional team with an average of over 10 year of expertise in the distribution of electronic components. Based in Hongkong, we have already established firm and mutual-benefit business relationships with customers from,Europe,America and south Asia,supplying obsolete and hard-to-find components to meet their specific needs.

With the principle of "Quality Parts,Customers Priority,Honest Operation,and Considerate Service",our business mainly focus on the distribution of electronic components. Line cards we deal with include Microchip,ALPS,ROHM,Xilinx,Pulse,ON,Everlight and Freescale. Main products comprise IC,Modules,Potentiometer,IC Socket,Relay,Connector.Our parts cover such applications as commercial,industrial, and automotives areas.

We are looking forward to setting up business relationship with you and hope to provide you with the best service and solution. Let us make a better world for our industry!



## Contact us

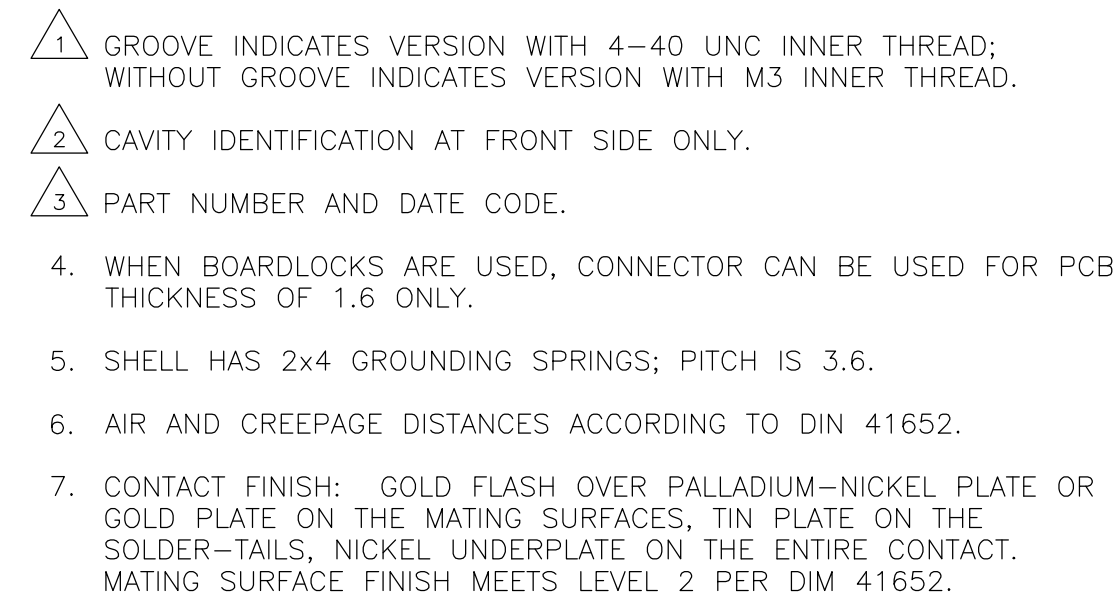
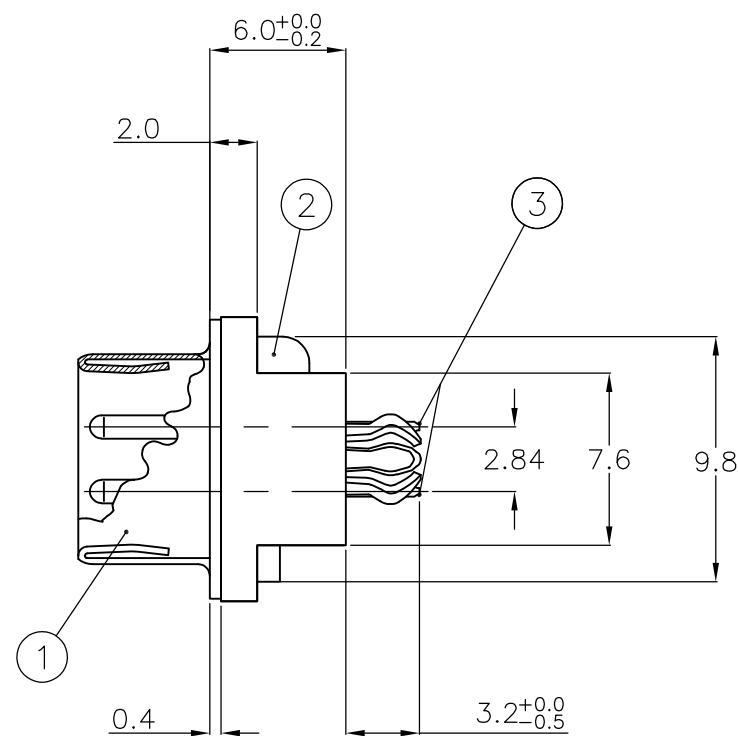
Tel: +86-755-8981 8866 Fax: +86-755-8427 6832

Email & Skype: [info@chipsmall.com](mailto:info@chipsmall.com) Web: [www.chipsmall.com](http://www.chipsmall.com)

Address: A1208, Overseas Decoration Building, #122 Zhenhua RD., Futian, Shenzhen, China

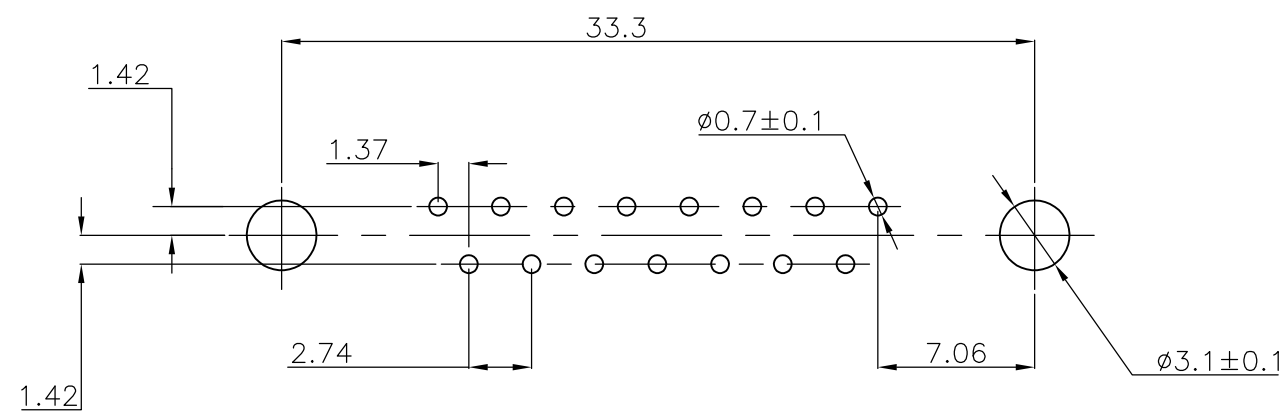




LOC	DIST	REVISIONS					
GP	00	P	LTR	DESCRIPTION	DATE	DWN	APVD
			G	REVISED PER ECO-12-009966	31MAY2012	CJV	SLB

[illegible]

	—
	1-338310-2
	2-338310-2
	3-338310-2
	4-338310-2
	5-338310-2
	6-338310-2
	7-338310-2
	8-338310-2
	9-338310-2
OBSOLETE	
OBSOLETE	

ITEM NO./MATERIAL:	
① SHELL	: BRIGHT TIN PLATED STEEL
② HOUSING	: GLASS FILLED POLYESTER, COLOR : BLACK
③ CONTACTS	: PHOSPHOR BRONZE (PLATING : SEE NOTES)
④ FEMALE SCREWLOCK	: TIN PLATED STEEL (INNER THREAD 4-40 UNC OR M3)
⑤ BUSHING	: TIN PLATED STEEL (INNER THREAD 4-40 UNC OR M3 OR $\phi 3.1$ THROUGH HOLE)
⑥ BOARDLOCK	: TIN PLATED PHOSPHOR BRONZE
⑦ STAND-OFF	: GLASS FILLED NYLON COLOR : BLACK



THIS DRAWING IS A CONTROLLED DOCUMENT. DIMENSIONING AND TOLERANCING PER ASME Y14.5M-2009		DWN J.V. LIEMPT 03JUL97 CHK C. SOUSA 09SEP97 APVD W. SOOMERS 09SEP97		 TE Connectivity	
DIMENSIONS: mm 		TOLERANCES UNLESS OTHERWISE SPECIFIED: 0 PLC ± - 1 PLC ± 0.3 2 PLC ± 0.15 3 PLC ± - 4 PLC ± - ANGLES ± -		NAME HDP-20 SIZE 2 VERTICAL+ PLUG HEADER; WITH SOLDER CONTACTS	
MATERIAL -		FINISH -			
		WEIGHT -		SIZE A2	CAGE CODE 00779
		CUSTOMER DRAWING		DRAWING NO G-338310	RESTRICTED TO -
		SCALE NTS		SHEET 1 of 1	REV G