



Chipsmall Limited consists of a professional team with an average of over 10 year of expertise in the distribution of electronic components. Based in Hongkong, we have already established firm and mutual-benefit business relationships with customers from,Europe,America and south Asia,supplying obsolete and hard-to-find components to meet their specific needs.

With the principle of “Quality Parts,Customers Priority,Honest Operation,and Considerate Service”,our business mainly focus on the distribution of electronic components. Line cards we deal with include Microchip,ALPS,ROHM,Xilinx,Pulse,ON,Everlight and Freescale. Main products comprise IC,Modules,Potentiometer,IC Socket,Relay,Connector.Our parts cover such applications as commercial,industrial, and automotives areas.

We are looking forward to setting up business relationship with you and hope to provide you with the best service and solution. Let us make a better world for our industry!



## Contact us

Tel: +86-755-8981 8866 Fax: +86-755-8427 6832

Email & Skype: info@chipsmall.com Web: www.chipsmall.com

Address: A1208, Overseas Decoration Building, #122 Zhenhua RD., Futian, Shenzhen, China





## General data

Signal lamps with lamp socket. The standard illumination is by a filament lamp; illumination with LED is available on request. The mm specification in the product name indicates the appropriate mounting hole diameter of the signal lamps.

For further signal lamps, refer to the "8 mm" and "LUMOTAST" pushbutton ranges as well as the signal indicators of the "RAFIX" control component ranges.

## Content

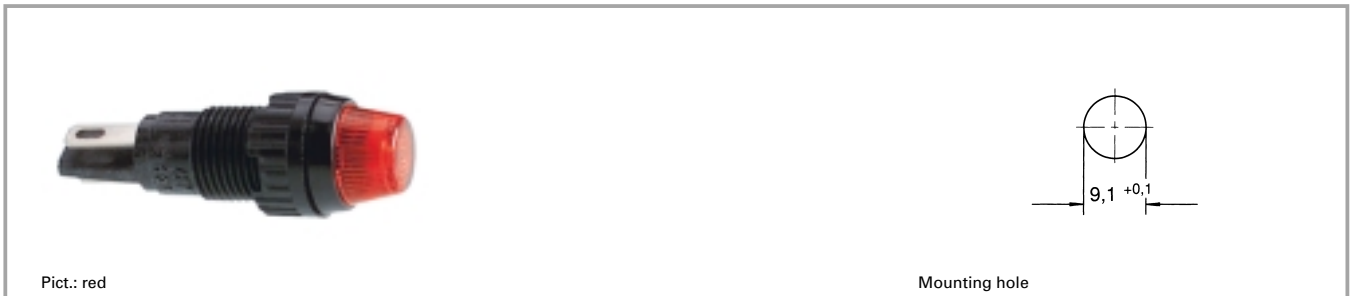
<b>Signal lamps with lamp socket W 2 x 4.6d, 9.1 mm</b>	<b>3 - 36</b>
Signal lamps with lamp socket W 2 x 4.6d, 9.1 mm, round lens	3 - 37
<b>Signal lamps with lamp socket T 4.6, 9.1 mm</b>	<b>3 - 38</b>
Signal lamps with lamp socket T 4.6, 9.1 mm, round lens	3 - 39
Signal lamps with lamp socket T 4.6, 9.1 mm, round lens	3 - 39
<b>Signal lamps with lamp socket T 5.5, 11.1 mm</b>	<b>3 - 40</b>
Signal lamps with lamp socket T 5.5, 11.1 mm, round lens	3 - 41
<b>Signal lamps with lamp socket BA 9s (MBC/MCC), 16.2 mm</b>	<b>3 - 42</b>
Signal lamps with lamp socket BA 9s (MBC/MCC), 16.2 mm, round lens	3 - 43
Signal lamps with lamp socket BA 9s (MBC/MCC), 16.2 mm, round lens	3 - 43
<b>Signal lamps with lamp socket E 10 (MES), 16.2 mm</b>	<b>3 - 44</b>
Signal lamps with lamp socket E 10 (MES), 16.2 mm, round lens	3 - 45
Signal lamps with lamp socket E 10 (MES), 16.2 mm, round lens	3 - 45
Signal lamps with lamp socket E 10 (MES), 16.2 mm, round lens	3 - 46
<b>Signal lamps with lamp socket BA 9s (MBC/MCC), 18.2 mm</b>	<b>3 - 48</b>
Signal lamps with lamp socket BA 9s (MBC/MCC), 18.2 mm, round lens	3 - 49
<b>Signal lamps with lamp socket E 14, 22.3 mm</b>	<b>3 - 50</b>
Signal lamps with lamp socket E 14, IP40, 22.3 mm	3 - 51
Signal lamps with lamp socket E 14, 22.3 mm, screw-on lens, IP40	3 - 51
<b>Signal lamps with lamp socket E 14, 30.5 mm</b>	<b>3 - 52</b>
Signal lamps with lamp socket E 14, IP40, 30.5 mm	3 - 53
Signal lamps with lamp socket E 14, IP40, 30.5 mm	3 - 53
Signal lamps with lamp socket E 14, IP40, 30.5 mm	3 - 54
<b>Signal lamps with lamp socket BA 15d, 30.5 mm</b>	<b>3 - 56</b>
Signal lamps with lamp socket BA 15d, IP40, 30.5 mm	3 - 57
Signal lamps with lamp socket BA 15d, IP40, 30.5 mm	3 - 58
Signal lamps with lamp socket BA 15d, IP40, 30.5 mm	3 - 58

Signal lamps

Stock items are marked by **bold printed** order numbers.

3 - 35

### Signal lamps with lamp socket W 2 x 4.6d, 9.1 mm



Pict.: red

Mounting hole

### Technical data

#### General information

Form of lens round  
 Colour of lens see order block  
 Diameter of collar 11 mm

#### Dimensions

Overall height 7 mm  
 Mounting depth 25.5 mm  
 Mounting hole 9.1 mm

#### Mechanical design

Mounting ring nut  
 Terminals quick connector  
 A 2.8 x 0.5 tin-plated  
 Lamp socket W 2 x 4.6d  
 Lamp filament lamp

#### Electrical characteristics

Voltage limit max. 42 V  
 Power limit max. 1.2 W

#### Other specifications

Degree of protection from front side IP40  
 Weight 1 g

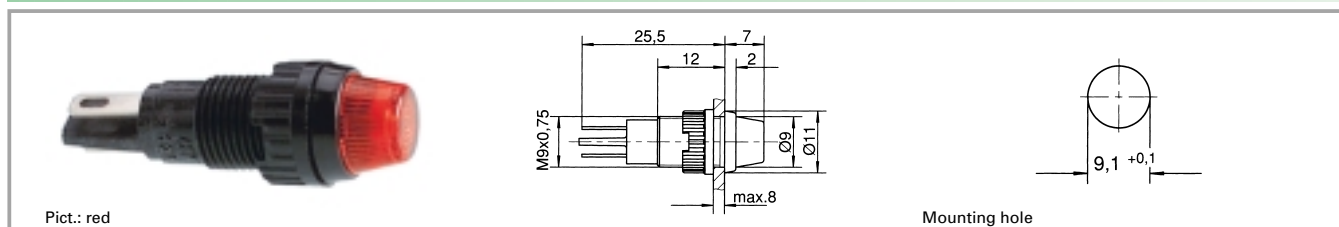
3

### Accessories Signal lamps with lamp socket W 2 x 4.6d, 9.1 mm

With Socket	Description	Photo	Order no.	Page
	Filament lamp, W 2 x 4.6d base, 24 - 30 V		<b>1.90.120.005/0000</b>	5 - 4
	Filament lamp, W 2 x 4.6d base, 60 V		<b>1.90.120.009/0000</b>	5 - 4
	Filament lamp, W 2 x 4.6d base, 48 V		<b>1.90.120.010/0000</b>	5 - 4
	Filament lamp, W 2 x 4.6d base, 24 V		<b>1.90.120.011/0000</b>	5 - 4
	Filament lamp, W 2 x 4.6d base, 12 V		<b>1.90.120.012/0000</b>	5 - 4
	Filament lamp, W 2 x 4.6d base, 6 V		<b>1.90.120.013/0000</b>	5 - 4
	Protective sleeve made of Buna N (NBR), 7 x 30		5.52.011.022/0100	
	Fixing spanner M 9, M 10		<b>5.58.002.025/0105</b>	5 - 25

## Signal lamps with lamp socket

### Signal lamps with lamp socket W 2 x 4.6d, 9.1 mm, round lens



Voltage limit max.	Power limit max.	Lamp	Colour of lens	Order no. complete	Order no. single parts	
					Housing	Lens
42 V	1.2 W	filament lamp	transparent colourless	1.66.001.011/1002	<b>1.66.001.026/0000</b>	<b>5.49.255.002/1002</b>
42 V	1.2 W	filament lamp	transparent red	1.66.001.011/1301	<b>1.66.001.026/0000</b>	<b>5.49.255.002/1301</b>
42 V	1.2 W	filament lamp	transparent yellow	1.66.001.011/1402	<b>1.66.001.026/0000</b>	<b>5.49.255.002/1402</b>
42 V	1.2 W	filament lamp	transparent green	1.66.001.011/1502	<b>1.66.001.026/0000</b>	<b>5.49.255.002/1502</b>
42 V	1.2 W	filament lamp	transparent blue	1.66.001.011/1601	<b>1.66.001.026/0000</b>	<b>5.49.255.002/1601</b>

Technical data see page 3 - 36

Please order luminous elements separately.

3

With Socket

### Signal lamps with lamp socket T 4.6, 9.1 mm



### Technical data

#### General information

Form of lens see order block  
 Colour of lens see order block  
 Diameter of collar 11 mm

#### Dimensions

Overall height see order block  
 Mounting depth 30.5 mm  
 Mounting hole 9.1 mm

#### Mechanical design

Mounting ring nut  
 Terminals solder terminals  
 Lamp socket T 4.6  
 Lamp filament lamp

#### Electrical characteristics

Voltage limit max. 42 V  
 Power limit max. 1 W

#### Other specifications

Degree of protection from front side IP40  
 Weight 1 g

3

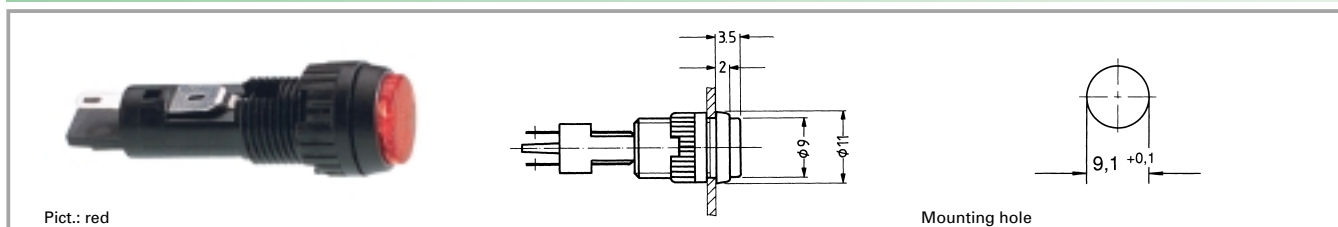
### Accessories Signal lamps with lamp socket T 4.6, 9.1 mm

Description	Photo	Order no.	Page
Filament lamp, T 4.6 base, 12 V		<b>1.90.100.012/0000</b>	5 - 6
Filament lamp, T 4.6 base, 24 V		<b>1.90.100.013/0000</b>	5 - 6
Fixing spanner M 9, M 10		<b>5.58.002.025/0105</b>	5 - 25

With Socket

## Signal lamps with lamp socket

### Signal lamps with lamp socket T 4.6, 9.1 mm, round lens

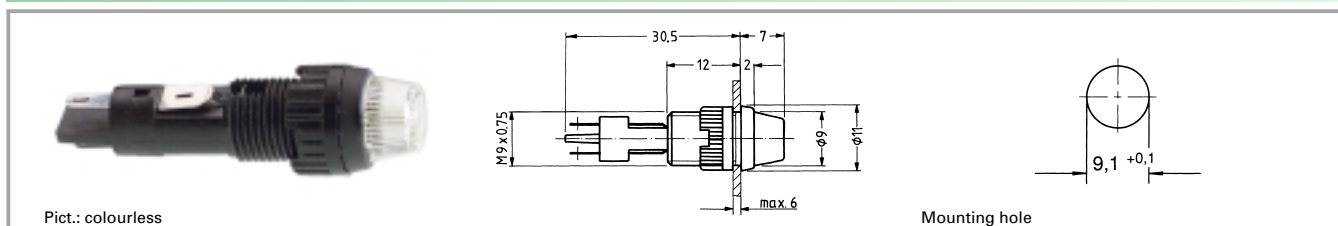


Voltage limit max.	Lamp socket	Lamp	Colour of lens	Order no. complete	Order no. single parts	
					Housing	Lens
42 V	T 4.6	filament lamp	transparent colourless	1.02.157.001/1002	<b>1.02.157.021/0000</b>	<b>5.49.255.001/1002</b>
42 V	T 4.6	filament lamp	transparent red	1.02.157.001/1307	<b>1.02.157.021/0000</b>	<b>5.49.255.001/1307</b>
42 V	T 4.6	filament lamp	transparent yellow	1.02.157.001/1403	<b>1.02.157.021/0000</b>	<b>5.49.255.001/1403</b>
42 V	T 4.6	filament lamp	transparent green	1.02.157.001/1510	<b>1.02.157.021/0000</b>	<b>5.49.255.001/1510</b>

Technical data see page 3 - 38

Please order luminous elements separately.

### Signal lamps with lamp socket T 4.6, 9.1 mm, round lens



Voltage limit max.	Lamp socket	Lamp	Colour of lens	Order no. complete	Order no. single parts	
					Housing	Lens
42 V	T 4.6	filament lamp	transparent colourless	1.02.157.011/1002	<b>1.02.157.021/0000</b>	<b>5.49.255.002/1002</b>
42 V	T 4.6	filament lamp	transparent red	1.02.157.011/1301	<b>1.02.157.021/0000</b>	<b>5.49.255.002/1301</b>
42 V	T 4.6	filament lamp	transparent yellow	1.02.157.011/1402	<b>1.02.157.021/0000</b>	<b>5.49.255.002/1402</b>
42 V	T 4.6	filament lamp	transparent green	1.02.157.011/1502	<b>1.02.157.021/0000</b>	<b>5.49.255.002/1502</b>

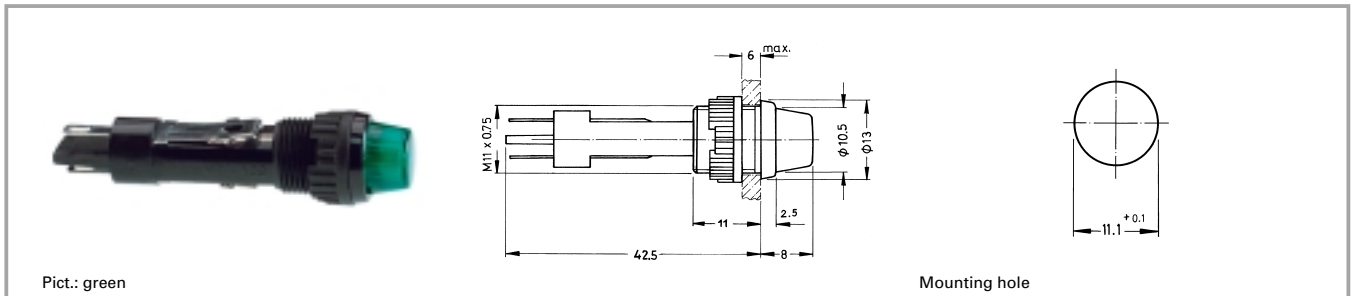
Technical data see page 3 - 38

Please order luminous elements separately.

3

With Socket

### Signal lamps with lamp socket T 5.5, 11.1 mm



### Technical data

#### General information

Form of lens round protruding  
 Colour of lens see order block  
 Diameter of collar 13 mm

#### Dimensions

Overall height 8 mm  
 Mounting depth 42.5 mm  
 Mounting hole 11.1 mm

#### Mechanical design

Mounting ring nut  
 Terminals solder terminals  
 Lamp socket T 5.5 DIN 49 604  
 Lamp filament lamp

#### Electrical characteristics

Voltage limit max. 42 V  
 Power limit max. 1.2 W

#### Other specifications

Degree of protection from front side IP40  
 Weight 2.5 g

3

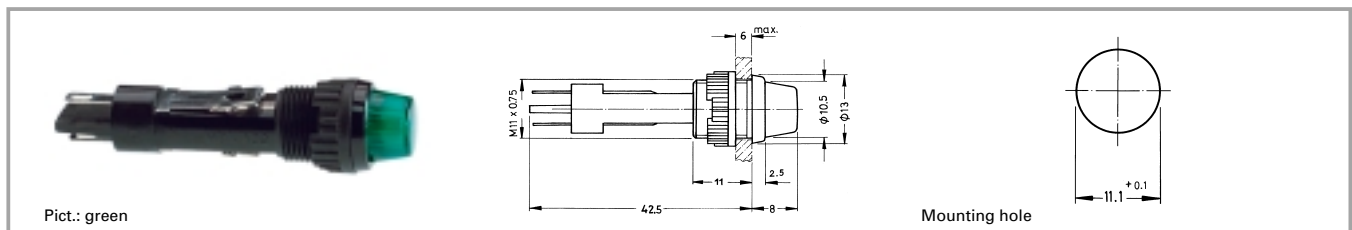
### Accessories Signal lamps with lamp socket T 5.5, 11.1 mm

Description	Photo	Order no.	Page
Filament lamp, T 5.5 base, 24 V		<b>1.90.101.054/0000</b>	5 - 7
Protective sleeve made of Buna N (NBR), 8 x 30		5.52.011.023/0100	
Fixing spanner M 11, M 13		<b>5.58.002.026/0105</b>	5 - 25

With Socket

## Signal lamps with lamp socket

### Signal lamps with lamp socket T 5.5, 11.1 mm, round lens



Voltage limit max.	Power limit max.	Lamp	Colour of lens	Order no. complete	Order no. single parts	
					Housing	Lens
42 V	1.2 W	filament lamp	transparent colourless	1.65.104.041/1002	<b>1.65.104.001/0000</b>	<b>5.49.255.003/1002</b>
42 V	1.2 W	filament lamp	transparent red	1.65.104.041/1301	<b>1.65.104.001/0000</b>	<b>5.49.255.003/1301</b>
42 V	1.2 W	filament lamp	transparent yellow	1.65.104.041/1402	<b>1.65.104.001/0000</b>	<b>5.49.255.003/1402</b>
42 V	1.2 W	filament lamp	transparent green	1.65.104.041/1502	<b>1.65.104.001/0000</b>	<b>5.49.255.003/1502</b>

Technical data see page 3 - 40

Please order luminous elements separately.

3

With  
Socket



### Signal lamps with lamp socket BA 9s (MBC/MCC), 16.2 mm



Pict.: colourless

yellow

Panel cut-out

### Technical data

#### General information

Form of lens	see order block
Colour of lens	see order block
Diameter of collar	see order block

#### Dimensions

Overall height	see order block
Mounting depth	45.8 mm
Mounting hole	16.2 mm

#### Mechanical design

Mounting	ring nut
Terminals	quick-connect terminals for 2x 2.8x0.8 mm tin-plated
Lamp socket	BA 9 s
Lamp	filament lamp

#### Electrical characteristics

Voltage limit max.	250 V
Power limit max.	2 W

#### Other specifications

Degree of protection from front side	see order block
Weight	10 g
Approvals	SEV at 2 W

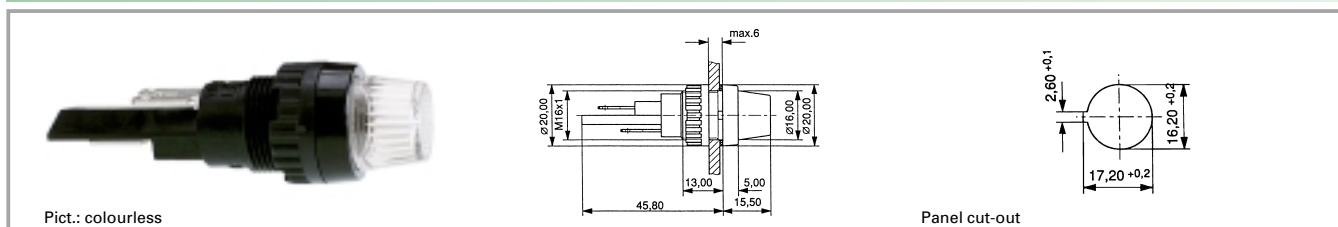
3

### Accessories Signal lamps with lamp socket BA 9s (MBC/MCC), 16.2 mm

With Socket	Description	Photo	Order no.	Page
	Protective sleeve for terminals made of Buna N (NBR)		5.52.011.027/0100	
	Fixing spanner M 15, M 16		5.58.002.019/0105	5 - 25

## Signal lamps with lamp socket

### Signal lamps with lamp socket BA 9s (MBC/MCC), 16.2 mm, round lens



Voltage limit max.	Power limit max.	Degree of protection from front side	Colour of lens	Order no. complete	Order no. single parts	
					Housing	Lens
250 V	2 W	IP40	transparent colourless	1.63.004.001/1002	<b>1.63.004.091/0000</b>	<b>5.49.205.013/1002</b>
250 V	2 W	IP40	transparent red	1.63.004.001/1301	<b>1.63.004.091/0000</b>	<b>5.49.205.013/1301</b>
250 V	2 W	IP40	transparent yellow	1.63.004.001/1402	<b>1.63.004.091/0000</b>	<b>5.49.205.013/1402</b>
250 V	2 W	IP40	transparent green	1.63.004.001/1502	<b>1.63.004.091/0000</b>	<b>5.49.205.013/1502</b>

Technical data see page 3 - 42

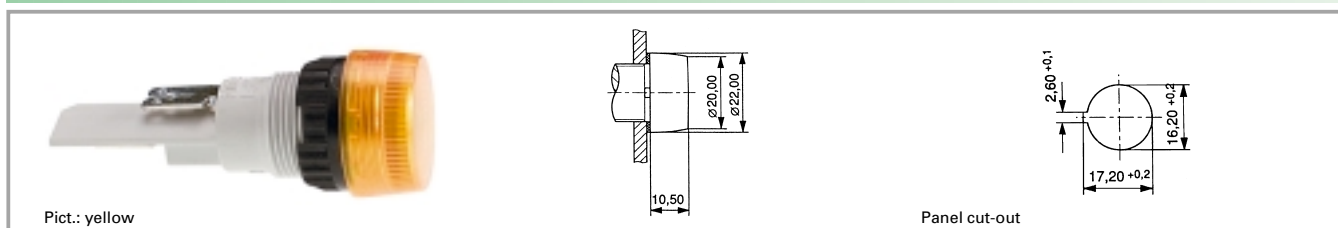
#### Accessories:

Filament lamp, BA 9s base (MBC/MCC), 12 - 15 V: **1.90.060.132/0000**

Filament lamp, BA 9s base (MBC/MCC), 24 - 30 V: **1.90.060.133/0000**

Filament lamp, BA 9s base (MBC/MCC), 110 - 130 V: **1.90.060.137/0000**

### Signal lamps with lamp socket BA 9s (MBC/MCC), 16.2 mm, round lens



Voltage limit max.	Power limit max.	Degree of protection from front side	Colour of lens	Order no. complete	Order no. single parts	
					Housing	Lens
250 V	2 W	IP65	transparent colourless	1.63.004.010/1002	<b>1.63.004.100/0000</b>	<b>5.49.227.007/1002</b>
250 V	2 W	IP65	transparent red	1.63.004.010/1301	<b>1.63.004.100/0000</b>	<b>5.49.227.007/1301</b>
250 V	2 W	IP65	transparent yellow	1.63.004.010/1402	<b>1.63.004.100/0000</b>	<b>5.49.227.007/1402</b>
250 V	2 W	IP65	transparent green	1.63.004.010/1502	<b>1.63.004.100/0000</b>	<b>5.49.227.007/1502</b>

Technical data see page 3 - 42

#### Accessories:

Filament lamp, BA 9s base (MBC/MCC), 12 - 15 V: **1.90.060.003/0000**

Filament lamp, BA 9s base (MBC/MCC), 24 - 30 V: **1.90.060.014/0000**

### Signal lamps with lamp socket E 10 (MES), 16.2 mm



### Technical data

#### General information

Form of lens                      round  
 Colour of lens                      see order block  
 Diameter of collar                      20 mm

#### Dimensions

Overall height                      see order block  
 Mounting depth                      see order block  
 Mounting hole                      16.2 mm

#### Mechanical design

Mounting                      ring nut  
 Terminals                      see order block  
 Lamp socket                      E 10  
 Lamp                      filament lamp

#### Electrical characteristics

Voltage limit max.                      250 V  
 Power limit max.                      2 W

#### Other specifications

Degree of protection  
 from front side                      IP40  
 Weight                      11 g  
 Approvals at 2W  
 (T=°C)                      VDE

3

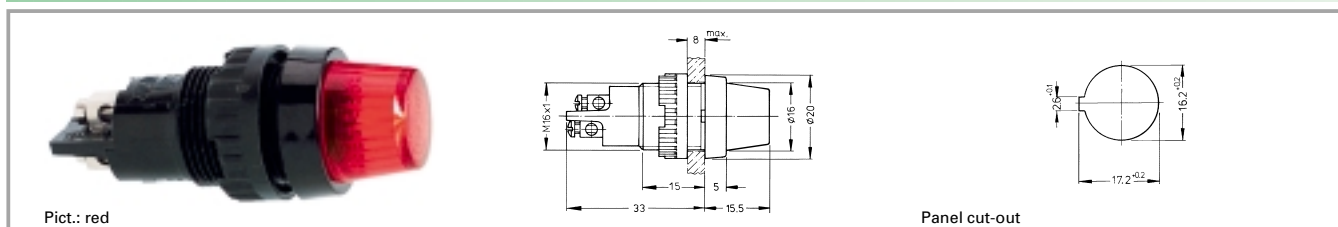
### Accessories Signal lamps with lamp socket E 10 (MES), 16.2 mm

Description	Photo	Order no.	Page
Filament lamp, E 10 (MES) base, 24 - 30 V		<b>1.90.010.033/0000</b>	5 - 11
Filament lamp, E 10 (MES) base, 110 - 130 V		<b>1.90.010.037/0000</b>	5 - 11
Protective sleeve for terminals		5.52.011.026/0100	
Fixing spanner M 15, M 16		<b>5.58.002.019/0105</b>	5 - 25

With Socket

## Signal lamps with lamp socket

### Signal lamps with lamp socket E 10 (MES), 16.2 mm, round lens



Voltage limit max.	Power limit max.	Terminals	Colour of lens	Order no. complete	Order no. single parts	
					Housing	Lens
250 V	2 W	screw terminals nickel-plated	transparent colourless	<b>1.60.502.102/1002</b>	1.60.502.091/0000	<b>5.49.205.013/1002</b>
250 V	2 W	screw terminals nickel-plated	transparent red	<b>1.60.502.102/1301</b>	1.60.502.091/0000	<b>5.49.205.013/1301</b>
250 V	2 W	screw terminals nickel-plated	transparent yellow	<b>1.60.502.102/1402</b>	1.60.502.091/0000	<b>5.49.205.013/1402</b>
250 V	2 W	screw terminals nickel-plated	transparent green	<b>1.60.502.102/1502</b>	1.60.502.091/0000	<b>5.49.205.013/1502</b>
250 V	2 W	screw terminals nickel-plated	transparent blue	<b>1.60.502.102/1601</b>	1.60.502.091/0000	<b>5.49.205.013/1601</b>

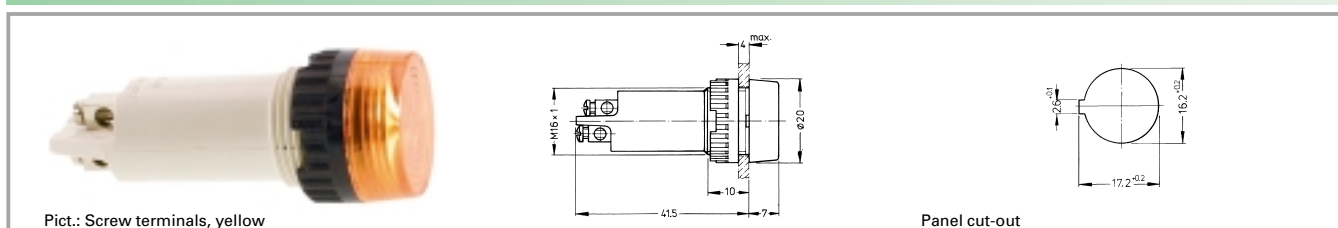
Technical data see page 3 - 44

Approval: VDE, SEV T70°C.

Versions with 2.8 x 0.8 quick-connect terminals available on request.

3

### Signal lamps with lamp socket E 10 (MES), 16.2 mm, round lens



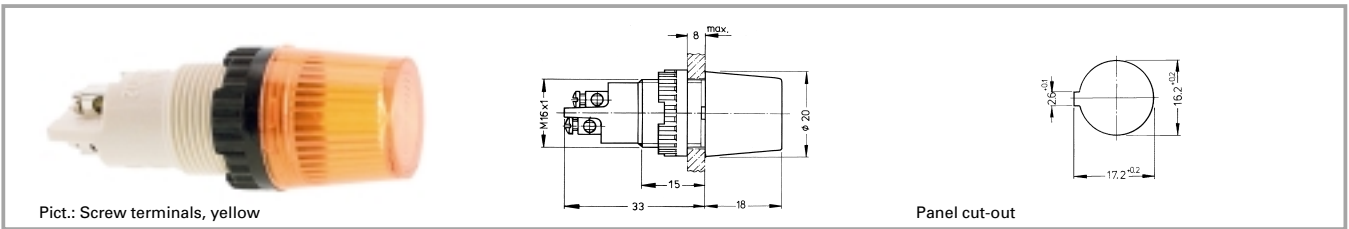
Voltage limit max.	Power limit max.	Terminals	Colour of lens	Order no. complete	Order no. single parts	
					Housing	Lens
250 V	2 W	screw terminals nickel-plated	transparent colourless	1.60.502.002/1002	<b>1.60.502.098/0000</b>	<b>5.49.227.005/1002</b>
250 V	2 W	screw terminals nickel-plated	transparent red	1.60.502.002/1301	<b>1.60.502.098/0000</b>	<b>5.49.227.005/1301</b>
250 V	2 W	screw terminals nickel-plated	transparent yellow	1.60.502.002/1402	<b>1.60.502.098/0000</b>	<b>5.49.227.005/1402</b>
250 V	2 W	screw terminals nickel-plated	transparent green	1.60.502.002/1502	<b>1.60.502.098/0000</b>	<b>5.49.227.005/1502</b>
250 V	2 W	screw terminals nickel-plated	transparent blue	1.60.502.002/1601	<b>1.60.502.098/0000</b>	<b>5.49.227.005/1601</b>

Technical data see page 3 - 44

Approval: VDE, SEV T70°C.

With Socket

### Signal lamps with lamp socket E 10 (MES), 16.2 mm, round lens



Voltage limit max.	Power limit max.	Terminals	Colour of lens	Order no. complete	Order no. single parts	
					Housing	Lens
250 V	2 W	screw terminals nickel-plated	transparent colourless	1.60.502.001/1002	<b>1.60.502.099/0000</b>	<b>5.49.227.004/1002</b>
250 V	2 W	screw terminals nickel-plated	transparent red	1.60.502.001/1301	<b>1.60.502.099/0000</b>	<b>5.49.227.004/1301</b>
250 V	2 W	screw terminals nickel-plated	transparent yellow	1.60.502.001/1402	<b>1.60.502.099/0000</b>	<b>5.49.227.004/1402</b>
250 V	2 W	screw terminals nickel-plated	transparent green	1.60.502.001/1502	<b>1.60.502.099/0000</b>	<b>5.49.227.004/1502</b>
250 V	2 W	screw terminals nickel-plated	transparent blue	1.60.502.001/1601	<b>1.60.502.099/0000</b>	<b>5.49.227.004/1601</b>

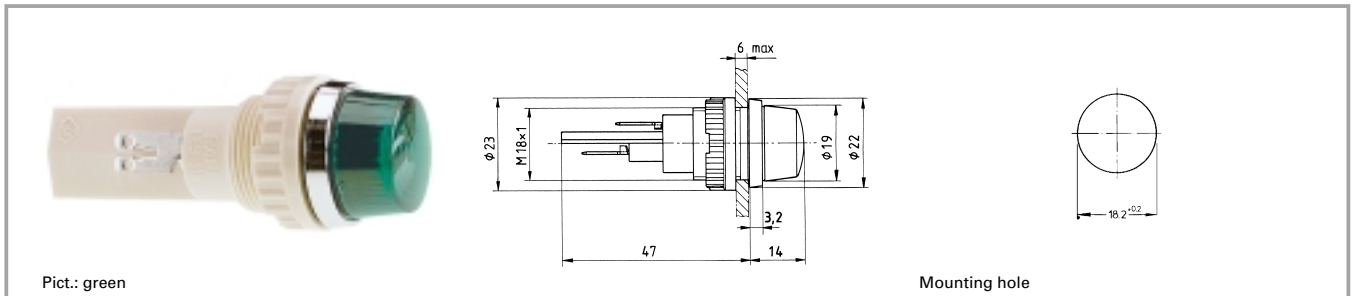
Technical data see page 3 - 44

Approval: VDE, SEV T70°C.

3

With Socket

### Signal lamps with lamp socket BA 9s (MBC/MCC), 18.2 mm



### Technical data

#### General information

Form of lens round  
 Colour of lens see order block  
 Diameter of collar 22 mm

#### Electrical characteristics

Voltage limit max. 250 V  
 Power limit max. 2 W

#### Dimensions

Overall height 14 mm  
 Mounting depth 47 mm  
 Mounting hole 18.2 mm

#### Other specifications

Degree of protection from front side IP65  
 Weight 22 g  
 Approvals VDE T120°C bei 2 W

#### Mechanical design

Mounting ring nut  
 Terminals quick-connect terminals for 2x 2.8x0.8 mm tin-plated  
 Lamp socket BA 9 s  
 Lamp filament lamp

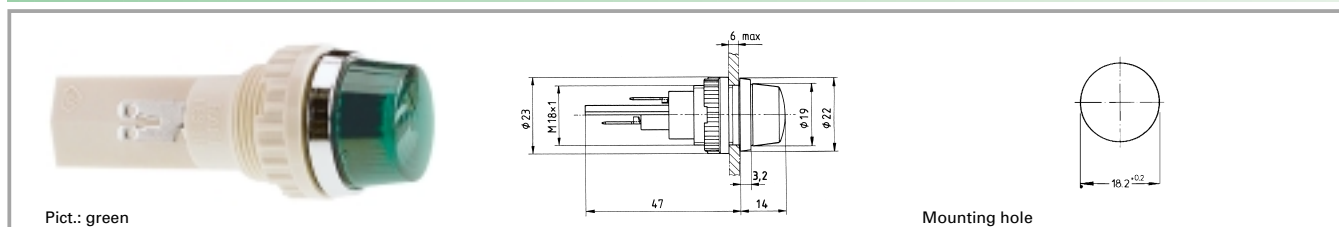
### Accessories Signal lamps with lamp socket BA 9s (MBC/MCC), 18.2 mm

With Socket

Description	Photo	Order no.	Page
Filament lamp, BA 9s base (MBC/MCC), 12 - 15 V		<b>1.90.060.132/0000</b>	5 - 8
Filament lamp, BA 9s base (MBC/MCC), 24 - 30 V		<b>1.90.060.133/0000</b>	5 - 8
Filament lamp, BA 9s base (MBC/MCC), 110 - 130 V		<b>1.90.060.137/0000</b>	5 - 8
Protective sleeve for terminals made of Buna N (NBR)		5.52.011.027/0100	

## Signal lamps with lamp socket

### Signal lamps with lamp socket BA 9s (MBC/MCC), 18.2 mm, round lens



Voltage limit max.	Power limit max.	Lamp	Colour of lens	Order no. complete	Order no. single parts	
					Housing	Lens
250 V	2 W	filament lamp	transparent colourless	<b>1.63.018.001/1002</b>	1.63.018.091/0000	5.49.205.018/1002
250 V	2 W	filament lamp	transparent red	<b>1.63.018.001/1301</b>	1.63.018.091/0000	5.49.205.018/1301
250 V	2 W	filament lamp	transparent yellow	<b>1.63.018.001/1402</b>	1.63.018.091/0000	5.49.205.018/1402
250 V	2 W	filament lamp	transparent green	<b>1.63.018.001/1502</b>	1.63.018.091/0000	5.49.205.018/1502

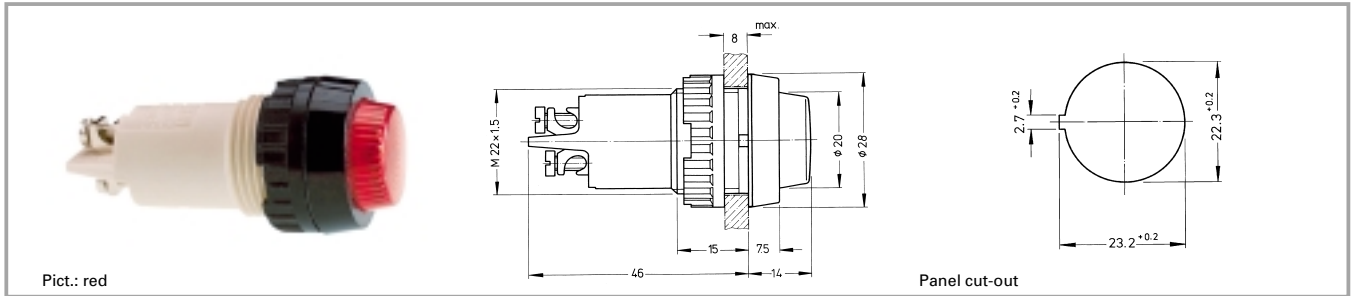
Technical data see page 3 - 48

Please order luminous elements separately. When ordering as single parts, please add 1 x sealing ring 5.30.120.009/0100 for each signal lamp to your order.

3

With Socket

### Signal lamps with lamp socket E 14, 22.3 mm



### Technical data

#### General information

Form of lens	round
Colour of lens	see order block
Diameter of collar	28 mm

#### Dimensions

Overall height	14 mm
Mounting depth	46 mm
Mounting hole	22.3 mm

#### Mechanical design

Mounting	ring nut
Terminals	see order block
Lamp socket	E 14
Lamp	filament lamp

#### Electrical characteristics

Voltage limit max.	250 V
Power limit max.	2 W

#### Other specifications

Degree of protection from front side	see order block
Weight	21 g
Approvals 1W (T100°C)	VDE
Approvals 2W (T85°C)	VDE, DEMKO, NEMKO

### Accessories Signal lamps with lamp socket E 14, 22.3 mm

Description	Photo	Order no.	Page
Filament lamp, E 14 base, 24 - 30 V		<b>1.90.020.033/0000</b>	5 - 12
Sealing ring for IP65		5.30.075.010/0100	5 - 31
Protection against contact to VBG 4		5.50.240.063/0209	5 - 32
Protective sleeve for terminals made of Buna N (NBR)		5.52.011.029/0100	
Fixing spanner M 20, M 22, for ring nut		<b>5.58.002.018/0105</b>	5 - 25

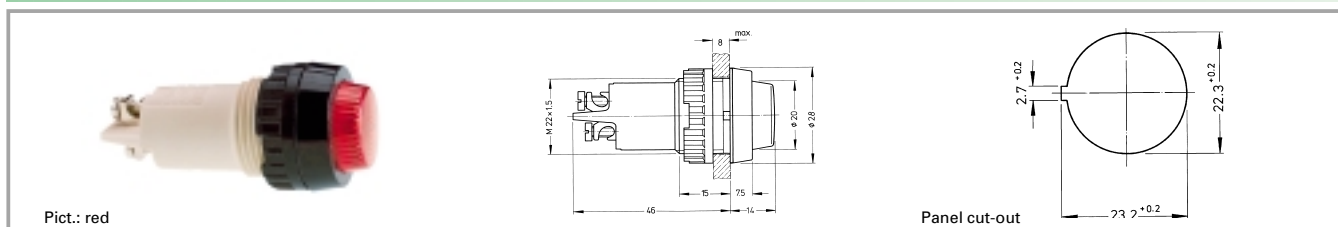
3

With  
Socket



## Signal lamps with lamp socket

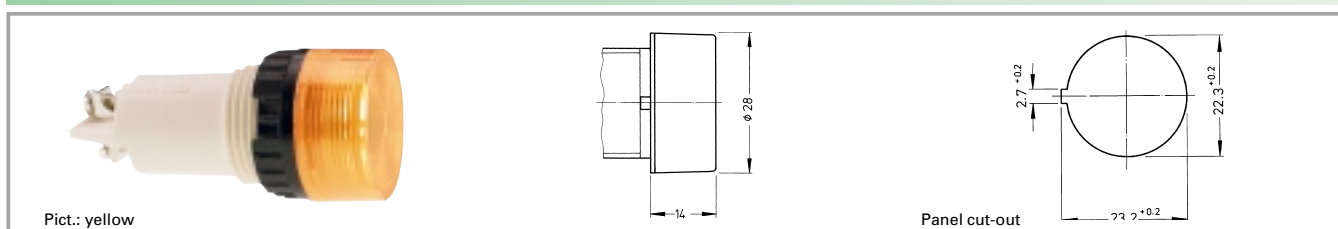
### Signal lamps with lamp socket E 14, IP40, 22.3 mm



Voltage limit max.	Degree of protection from front	Terminals	Colour of lens	Order no. complete	Order no. single parts	
					Housing	Lens
250 V	IP40	screw terminals brass nickel-plated	transparent colourless	1.61.012.011/1002	<b>1.61.012.099/0000</b>	5.00.350.726/1002
250 V	IP40	screw terminals brass nickel-plated	transparent red	1.61.012.011/1301	<b>1.61.012.099/0000</b>	5.00.350.726/1301
250 V	IP40	screw terminals brass nickel-plated	transparent yellow	1.61.012.011/1402	<b>1.61.012.099/0000</b>	5.00.350.726/1402
250 V	IP40	screw terminals brass nickel-plated	transparent green	1.61.012.011/1502	<b>1.61.012.099/0000</b>	5.00.350.726/1502

Technical data see page 3 - 50

### Signal lamps with lamp socket E 14, 22.3 mm, screw-on lens, IP40



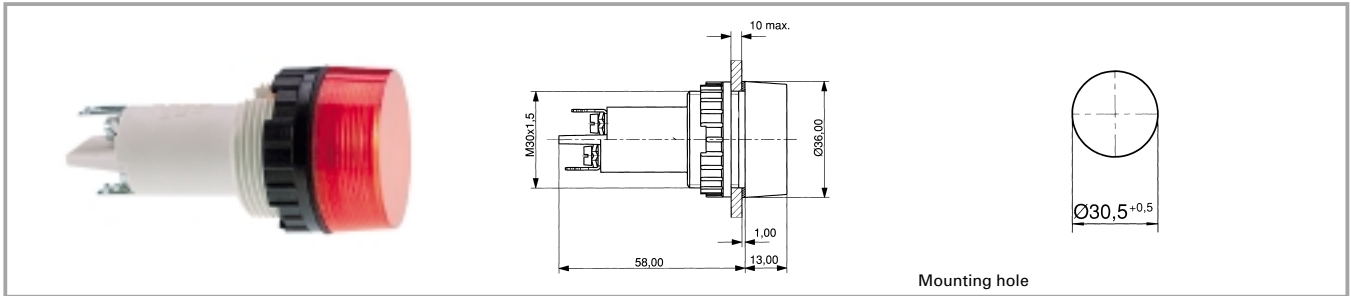
Voltage limit max.	Degree of protection from front	Terminals	Colour of lens	Order no. complete	Order no. single parts	
					Housing	Lens
250 V	IP40	screw terminals brass nickel-plated	transparent colourless	1.61.012.061/1002	<b>1.61.012.099/0000</b>	<b>5.49.229.006/1002</b>
250 V	IP40	screw terminals brass nickel-plated	transparent red	1.61.012.061/1301	<b>1.61.012.099/0000</b>	<b>5.49.229.006/1301</b>
250 V	IP40	screw terminals brass nickel-plated	transparent yellow	1.61.012.061/1402	<b>1.61.012.099/0000</b>	<b>5.49.229.006/1402</b>
250 V	IP40	screw terminals brass nickel-plated	transparent green	1.61.012.061/1502	<b>1.61.012.099/0000</b>	<b>5.49.229.006/1502</b>

Technical data see page 3 - 50

3

With Socket

### Signal lamps with lamp socket E 14, 30.5 mm



### Technical data

#### General information

Form of lens	round
Colour of lens	see order block
Diameter of collar	36 mm

#### Electrical characteristics

Voltage limit max.	250 V
Power limit max.	5 W

#### Dimensions

Overall height	see order block
Mounting depth	58 mm
Mounting hole	30.5 mm

#### Other specifications

Degree of protection from front side	see order block
Weight	40 g

#### Mechanical design

Mounting	ring nut
Terminals	screw-terminals and quick-connect terminals for 2 x 2.8 x 0.8 mm
Lamp socket	E 14
Lamp	filament lamp

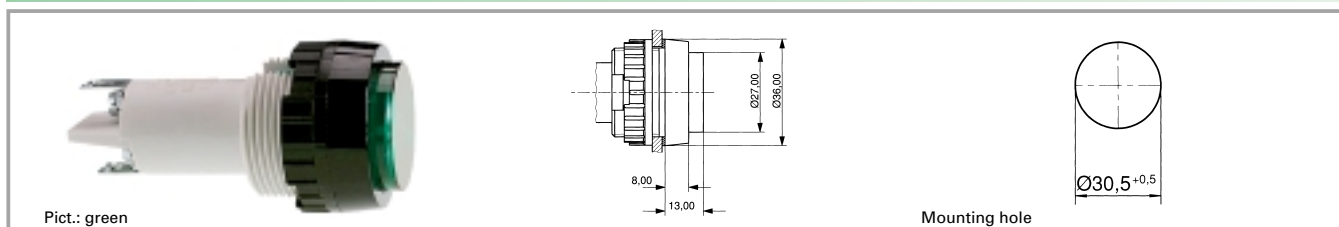
### Accessories Signal lamps with lamp socket E 14, 30.5 mm

With Socket

Description	Photo	Order no.	Page
Protection against contact to VBG 5		5.50.240.065/0200	5 - 32
Protective sleeve for terminals		5.52.011.031/0100	
Fixing spanner M 25, M 30		5.58.002.020/0105	5 - 25

## Signal lamps with lamp socket

### Signal lamps with lamp socket E 14, IP40, 30.5 mm



Voltage limit max.	Power limit max.	Degree of protection from front side	Colour of lens	Order no. complete	Order no. single parts	
					Housing	Lens
250 V	5 W	IP40	transparent colourless	1.61.021.004/1002	<b>1.61.021.099/0000</b>	<b>5.00.350.013/1002</b>
250 V	5 W	IP40	transparent red	1.61.021.004/1301	<b>1.61.021.099/0000</b>	<b>5.00.350.013/1301</b>
250 V	5 W	IP40	transparent yellow	1.61.021.004/1402	<b>1.61.021.099/0000</b>	<b>5.00.350.013/1402</b>
250 V	5 W	IP40	transparent green	1.61.021.004/1502	<b>1.61.021.099/0000</b>	<b>5.00.350.013/1502</b>

Technical data see page 3 - 52

#### Accessories:

Filament lamp, E 14 base, 24 - 30 V: **1.90.020.033/0000**

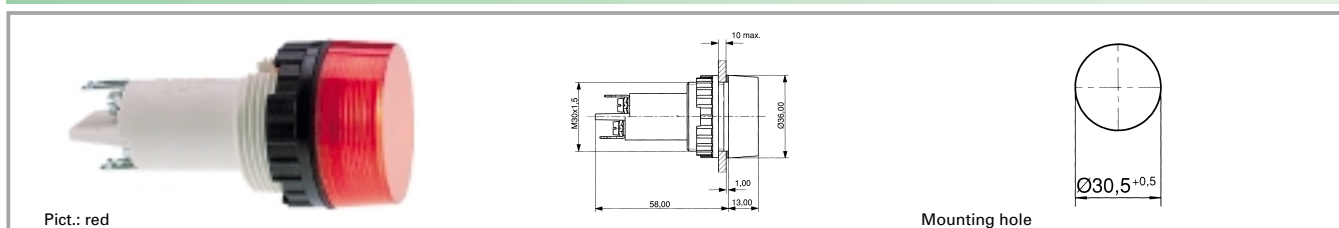
Filament lamp, E 14 base, 24 V: **1.90.020.053/0000**

Filament lamp, E 14 base, 220 - 260 V: **1.90.020.061/0000**

Single-wire screw terminal with clamp: 2 x 0.75 to 2.5 mm<sup>2</sup>, stranded core with wire end sleeve: 2 x 0.75 to 1.5 mm<sup>2</sup>, quick-connect terminal suitable for 2 x 2.8 x 0.8 tin-plated for soldering.

3

### Signal lamps with lamp socket E 14, IP40, 30.5 mm



Voltage limit max.	Power limit max.	Degree of protection from front side	Colour of lens	Order no. complete	Order no. single parts	
					Housing	Lens
250 V	5 W	IP40	transparent colourless	1.61.021.001/1002	<b>1.61.021.099/0000</b>	<b>5.49.233.005/1002</b>
250 V	5 W	IP40	transparent red	1.61.021.001/1301	<b>1.61.021.099/0000</b>	<b>5.49.233.005/1301</b>
250 V	5 W	IP40	transparent yellow	1.61.021.001/1402	<b>1.61.021.099/0000</b>	<b>5.49.233.005/1402</b>
250 V	5 W	IP40	transparent green	1.61.021.001/1502	<b>1.61.021.099/0000</b>	<b>5.49.233.005/1502</b>

Technical data see page 3 - 52

#### Accessories:

Filament lamp, E 14 base, 24 - 30 V: **1.90.020.033/0000**

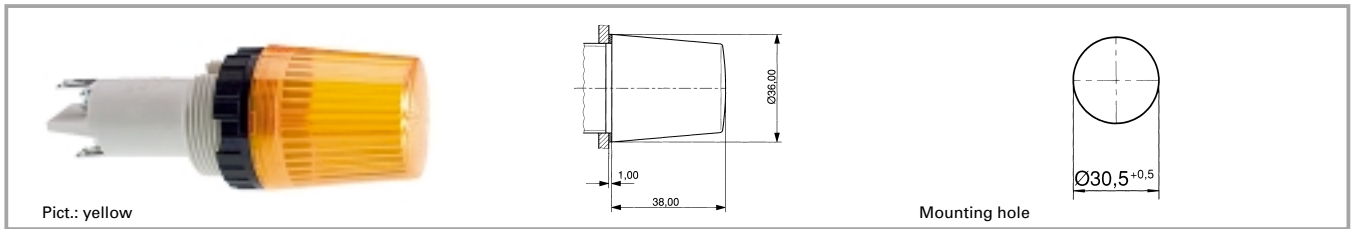
Filament lamp, E 14 base, 24 V: **1.90.020.053/0000**

Filament lamp, E 14 base, 220 - 260 V: **1.90.020.061/0000**

Single-wire screw terminal with clamp: 2 x 0.75 to 2.5 mm<sup>2</sup>, stranded core with wire end sleeve: 2 x 0.75 to 1.5 mm<sup>2</sup>, quick-connect terminal suitable for 2 x 2.8 x 0.8 tin-plated for soldering.

With Socket

### Signal lamps with lamp socket E 14, IP40, 30.5 mm



Voltage limit max.	Power limit max.	Degree of protection from front side	Colour of lens	Order no. complete	Order no. single parts	
					Housing	Lens
250 V	5 W	IP40	transparent colourless	1.61.021.011/1002	<b>1.61.021.099/0000</b>	<b>5.49.233.008/1002</b>
250 V	5 W	IP40	transparent red	1.61.021.011/1301	<b>1.61.021.099/0000</b>	<b>5.49.233.008/1301</b>
250 V	5 W	IP40	transparent yellow	1.61.021.011/1402	<b>1.61.021.099/0000</b>	<b>5.49.233.008/1402</b>
250 V	5 W	IP40	transparent green	1.61.021.011/1502	<b>1.61.021.099/0000</b>	<b>5.49.233.008/1502</b>

Technical data see page 3 - 52

#### Accessories:

Filament lamp, E 14 base, 24 - 30 V: **1.90.020.105/0000**

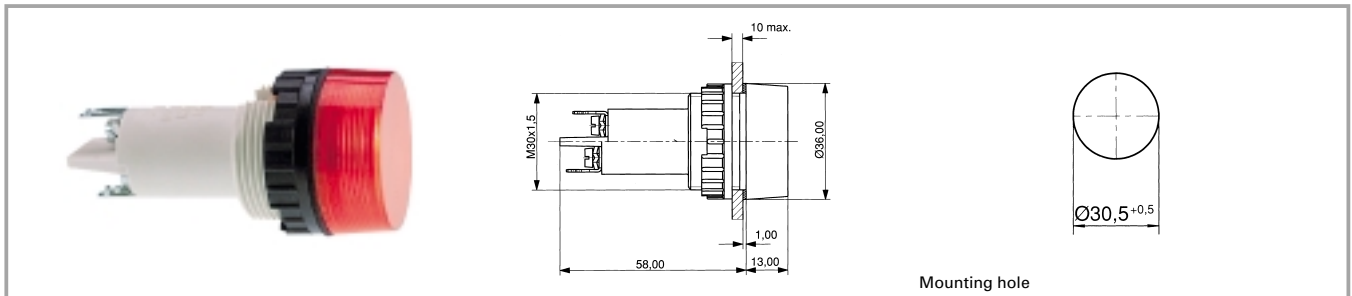
Filament lamp, E 14 base, 220 - 260 V: **1.90.020.115/0000**

Single-wire screw terminal with clamp: 2 x 0.75 to 2.5 mm<sup>2</sup>, stranded core with wire end sleeve: 2 x 0.75 to 1.5 mm<sup>2</sup>, quick-connect terminal suitable for 2 x 2.8 x 0.8 tin-plated for soldering.

3

With  
Socket

### Signal lamps with lamp socket BA 15d, 30.5 mm



### Technical data

#### General information

Form of lens round  
 Colour of lens see order block  
 Diameter of collar 36 mm

#### Electrical characteristics

Voltage limit max. 250 V  
 Power limit max. 5 W

#### Dimensions

Overall height see order block  
 Mounting depth 58 mm  
 Mounting hole 30.5 mm

#### Other specifications

Degree of protection from front side see order block  
 Weight 40 g

#### Mechanical design

Mounting ring nut  
 Terminals screw-terminals and quick-connect terminals for 2 x 2.8 x 0.8 mm  
 Lamp socket BA 15 d  
 Lamp filament lamp

3

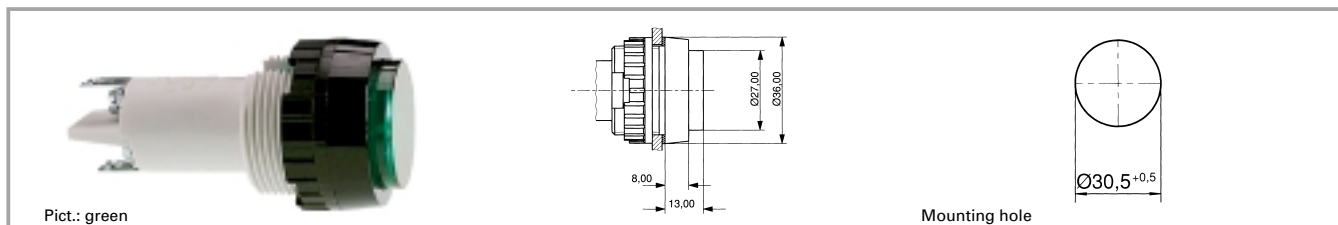
### Accessories Signal lamps with lamp socket BA 15d, 30.5 mm

With Socket

Description	Photo	Order no.	Page
Protection against contact to VBG 5		5.50.240.065/0200	5 - 32
Protective sleeve		5.52.011.031/0100	
Fixing spanner M 25, M 30		5.58.002.020/0105	5 - 25

## Signal lamps with lamp socket

### Signal lamps with lamp socket BA 15d, IP40, 30.5 mm



Voltage limit max.	Power limit max.	Degree of protection from front side	Colour of lens	Order no. complete	Order no. single parts	
					Housing	Lens
250 V	5 W	IP40	transparent colourless	1.63.521.004/1002	<b>1.63.521.099/0000</b>	<b>5.00.350.013/1002</b>
250 V	5 W	IP40	transparent red	1.63.521.004/1301	<b>1.63.521.099/0000</b>	<b>5.00.350.013/1301</b>
250 V	5 W	IP40	transparent yellow	1.63.521.004/1402	<b>1.63.521.099/0000</b>	<b>5.00.350.013/1402</b>
250 V	5 W	IP40	transparent green	1.63.521.004/1502	<b>1.63.521.099/0000</b>	<b>5.00.350.013/1502</b>

Technical data see page 3 - 56

#### Accessories:

Filament lamp, BA 15d base, 12 - 15 V: **1.90.070.003/0000**

Filament lamp, BA 15d base, 24 - 30 V: **1.90.070.004/0000**

Filament lamp, BA 15d base, 24 V: **1.90.070.053/0000**

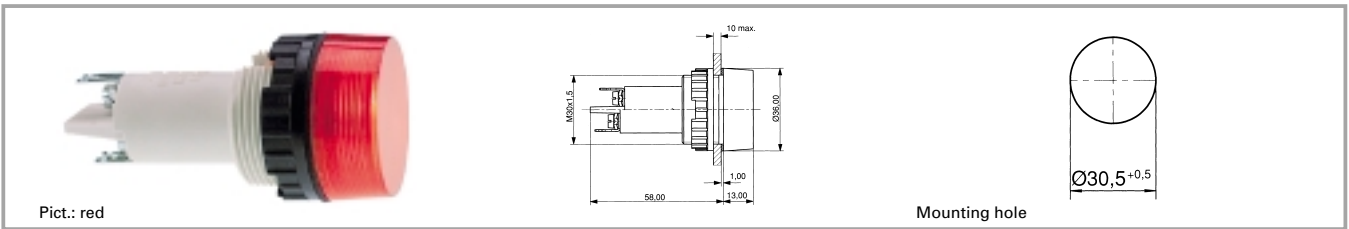
Filament lamp, BA 15d base, 220 - 260 V: **1.90.070.061/0000**

Single-wire screw terminal with clamp: 2 x 0.75 to 2.5 mm<sup>2</sup>, stranded core with wire end sleeve: 2 x 0.75 to 1.5 mm<sup>2</sup>, quick-connect terminal suitable for 2 x 2.8 x 0.8 tin-plated for soldering.

3

With Socket

### Signal lamps with lamp socket BA 15d, IP40, 30.5 mm



Voltage limit max.	Power limit max.	Degree of protection from front side	Colour of lens	Order no. complete	Order no. single parts	
					Housing	Lens
250 V	5 W	IP40	transparent colourless	1.63.521.001/1002	<b>1.63.521.099/0000</b>	<b>5.49.233.005/1002</b>
250 V	5 W	IP40	transparent red	1.63.521.001/1301	<b>1.63.521.099/0000</b>	<b>5.49.233.005/1301</b>
250 V	5 W	IP40	transparent yellow	1.63.521.001/1402	<b>1.63.521.099/0000</b>	<b>5.49.233.005/1402</b>
250 V	5 W	IP40	transparent green	1.63.521.001/1502	<b>1.63.521.099/0000</b>	<b>5.49.233.005/1502</b>

Technical data see page 3 - 56

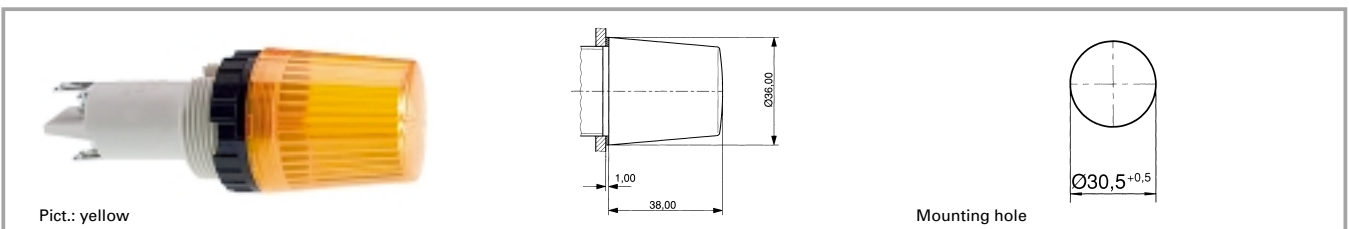
#### Accessories:

- Filament lamp, BA 15d base, 12 - 15 V: **1.90.070.003/0000**
- Filament lamp, BA 15d base, 24 - 30 V: **1.90.070.004/0000**
- Filament lamp, BA 15d base, 24 V: **1.90.070.053/0000**
- Filament lamp, BA 15d base, 220 - 260 V: **1.90.070.061/0000**

Single-wire screw terminal with clamp: 2 x 0.75 to 2.5 mm<sup>2</sup>, stranded core with wire end sleeve: 2 x 0.75 to 1.5 mm<sup>2</sup>, quick-connect terminal suitable for 2 x 2.8 x 0.8 tin-plated for soldering.

3

### Signal lamps with lamp socket BA 15d, IP40, 30.5 mm



Voltage limit max.	Power limit max.	Degree of protection from front side	Colour of lens	Order no. complete	Order no. single parts	
					Housing	Lens
250 V	5 W	IP40	transparent colourless	1.63.521.011/1002	<b>1.63.521.099/0000</b>	<b>5.49.233.008/1002</b>
250 V	5 W	IP40	transparent red	1.63.521.011/1301	<b>1.63.521.099/0000</b>	<b>5.49.233.008/1301</b>
250 V	5 W	IP40	transparent yellow	1.63.521.011/1402	<b>1.63.521.099/0000</b>	<b>5.49.233.008/1402</b>
250 V	5 W	IP40	transparent green	1.63.521.011/1502	<b>1.63.521.099/0000</b>	<b>5.49.233.008/1502</b>

Technical data see page 3 - 56

#### Accessories:

- Filament lamp, BA 15d base, 24 - 30 V: **1.90.070.105/0000**
- Filament lamp, BA 15d base, 220 - 260 V: **1.90.070.109/0000**

Single-wire screw terminal with clamp: 2 x 0.75 to 2.5 mm<sup>2</sup>, stranded core with wire end sleeve: 2 x 0.75 to 1.5 mm<sup>2</sup>, quick-connect terminal suitable for 2 x 2.8 x 0.8 tin-plated for soldering.

With Socket