



Chipsmall Limited consists of a professional team with an average of over 10 year of expertise in the distribution of electronic components. Based in Hongkong, we have already established firm and mutual-benefit business relationships with customers from,Europe,America and south Asia,supplying obsolete and hard-to-find components to meet their specific needs.

With the principle of “Quality Parts,Customers Priority,Honest Operation,and Considerate Service”,our business mainly focus on the distribution of electronic components. Line cards we deal with include Microchip,ALPS,ROHM,Xilinx,Pulse,ON,Everlight and Freescale. Main products comprise IC,Modules,Potentiometer,IC Socket,Relay,Connector.Our parts cover such applications as commercial,industrial, and automotives areas.

We are looking forward to setting up business relationship with you and hope to provide you with the best service and solution. Let us make a better world for our industry!



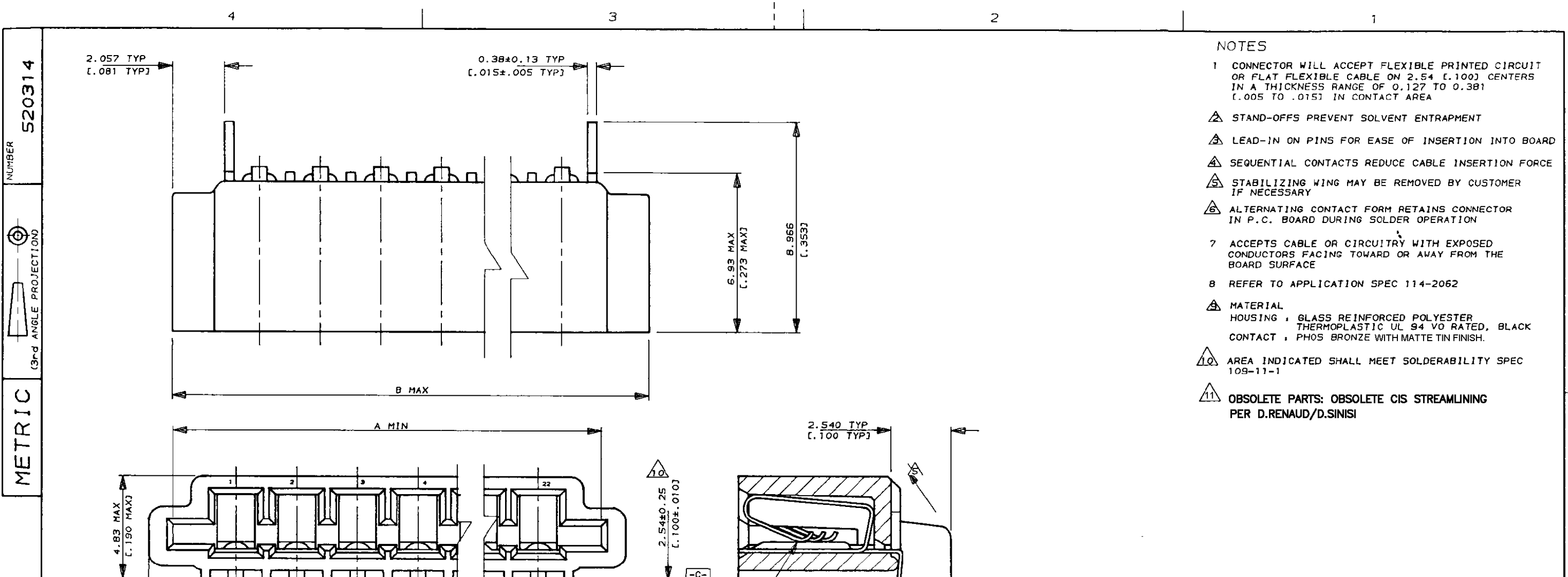
Contact us

Tel: +86-755-8981 8866 Fax: +86-755-8427 6832

Email & Skype: info@chipsmall.com Web: www.chipsmall.com

Address: A1208, Overseas Decoration Building, #122 Zhenhua RD., Futian, Shenzhen, China





- NOTES
- CONNECTOR WILL ACCEPT FLEXIBLE PRINTED CIRCUIT OR FLAT FLEXIBLE CABLE ON 2.54 [0.100] CENTERS IN A THICKNESS RANGE OF 0.127 TO 0.381 [0.005 TO 0.015] IN CONTACT AREA
 - STAND-OFFS PREVENT SOLVENT ENTRAPMENT
 - LEAD-IN ON PINS FOR EASE OF INSERTION INTO BOARD
 - SEQUENTIAL CONTACTS REDUCE CABLE INSERTION FORCE
 - STABILIZING WING MAY BE REMOVED BY CUSTOMER IF NECESSARY
 - ALTERNATING CONTACT FORM RETAINS CONNECTOR IN P.C. BOARD DURING SOLDER OPERATION
 - ACCEPTS CABLE OR CIRCUITRY WITH EXPOSED CONDUCTORS FACING TOWARD OR AWAY FROM THE BOARD SURFACE
 - REFER TO APPLICATION SPEC 114-2062
 - MATERIAL
HOUSING : GLASS REINFORCED POLYESTER
THERMOPLASTIC UL 94 VO RATED, BLACK
CONTACT : PHOS BRONZE WITH MATTE TIN FINISH.
 - AREA INDICATED SHALL MEET SOLDERABILITY SPEC 109-11-1
 - OBsolete PARTS: OBsolete CIS STREAMLINING PER D.RENAUD/D.SINISI

NUMBER 520314
 METRIC
 DIMENSIONS IN MM [INCHES]. DO NOT SCALE PRINT
 PRINT DIST

		LEAD FREE				SUPERSEDED	
OBsolete	Part No	B	A	POS	Part No		
OBsolete	520314-2	60.78 [2.393]	58.62 [2.308]	22	2-520314-2		
OBsolete	520314-1	58.24 [2.293]	56.08 [2.208]	21	2-520314-1		
OBsolete	520314-0	55.70 [2.193]	53.54 [2.108]	20	2-520314-0		
	6-520314-9	53.16 [2.093]	51.00 [2.008]	19	1-520314-9		
OBsolete	520314-8	50.62 [1.993]	48.46 [1.908]	18	1-520314-8		
	6-520314-7	48.08 [1.893]	45.92 [1.808]	17	1-520314-7		
	6-520314-6	45.54 [1.793]	43.38 [1.708]	16	1-520314-6		
	6-520314-5	43.00 [1.693]	40.84 [1.608]	15	1-520314-5		
OBsolete	520314-4	40.46 [1.593]	38.30 [1.508]	14	1-520314-4		
	6-520314-3	37.92 [1.493]	35.76 [1.408]	13	1-520314-3		
	6-520314-2	35.38 [1.393]	33.22 [1.308]	12	1-520314-2		
	6-520314-1	32.84 [1.293]	30.68 [1.208]	11	1-520314-1		
	6-520314-0	30.30 [1.193]	28.14 [1.108]	10	1-520314-0		
	5-520314-9	27.76 [1.093]	25.60 [1.008]	9	520314-9		
	5-520314-8	25.22 [0.993]	23.06 [0.908]	8	520314-8		
	5-520314-7	22.68 [0.893]	20.52 [0.808]	7	520314-7		
	5-520314-6	20.14 [0.793]	17.98 [0.708]	6	520314-6		
	5-520314-5	17.60 [0.693]	15.44 [0.608]	5	520314-5		
	5-520314-4	15.06 [0.593]	12.90 [0.508]	4	520314-4		
OBsolete	520314-3	12.52 [0.493]	10.36 [0.408]	3	520314-3		
	5-520314-2	9.98 [0.393]	7.82 [0.308]	2	520314-2		

S3 ECR-10-022530		KK HMR		07FEB11	Copyright ©1993		Copyright ©1993		TE MFG (S) PTE LTD.		TE Connectivity	
S2 ECO-10-000445		KK AEG		11JAN10	(WIRE RANGE)	(INSULATION DIA.)	(NAME)					
S1 REVISED AS PER ECR-06-04332		PM KS		21FEB06	mm ² (AWG -)	mmØ	TRIOMATE HORIZONTAL CABLE ENTRY					
S REVISED FRO00-0011-04		SD PCH		19FEB04	(MATERIAL)	(FINISH) CONTACTS	FOR 1.57 [0.062] THK P.C. BOARD					
R REVISED DY/EC/0920		LWY SL		13.12.93		MATTE TIN/LEAD PLATED	(GENERAL TOLERANCE)	SIZE	LOC	(No.)		
Q REDRAWN DY/EC/0784		LWY SL		30.7.93	DR. WYLEE 30.7.93	DE. A.SOH	±.38	A3	DY	520314		
LTR (REVISION RECORD)		DR CHK		DATE	CHK. SALLY 30.7.93	APP. PETER de JONG	[±.015]	(SCALE)	REV.	SHEET		
							6:1	S3	1 OF 1			

(CUSTOMER DRAWING)