



Chipsmall Limited consists of a professional team with an average of over 10 year of expertise in the distribution of electronic components. Based in Hongkong, we have already established firm and mutual-benefit business relationships with customers from,Europe,America and south Asia,supplying obsolete and hard-to-find components to meet their specific needs.

With the principle of “Quality Parts,Customers Priority,Honest Operation,and Considerate Service”,our business mainly focus on the distribution of electronic components. Line cards we deal with include Microchip,ALPS,ROHM,Xilinx,Pulse,ON,Everlight and Freescale. Main products comprise IC,Modules,Potentiometer,IC Socket,Relay,Connector.Our parts cover such applications as commercial,industrial, and automotives areas.

We are looking forward to setting up business relationship with you and hope to provide you with the best service and solution. Let us make a better world for our industry!



## Contact us

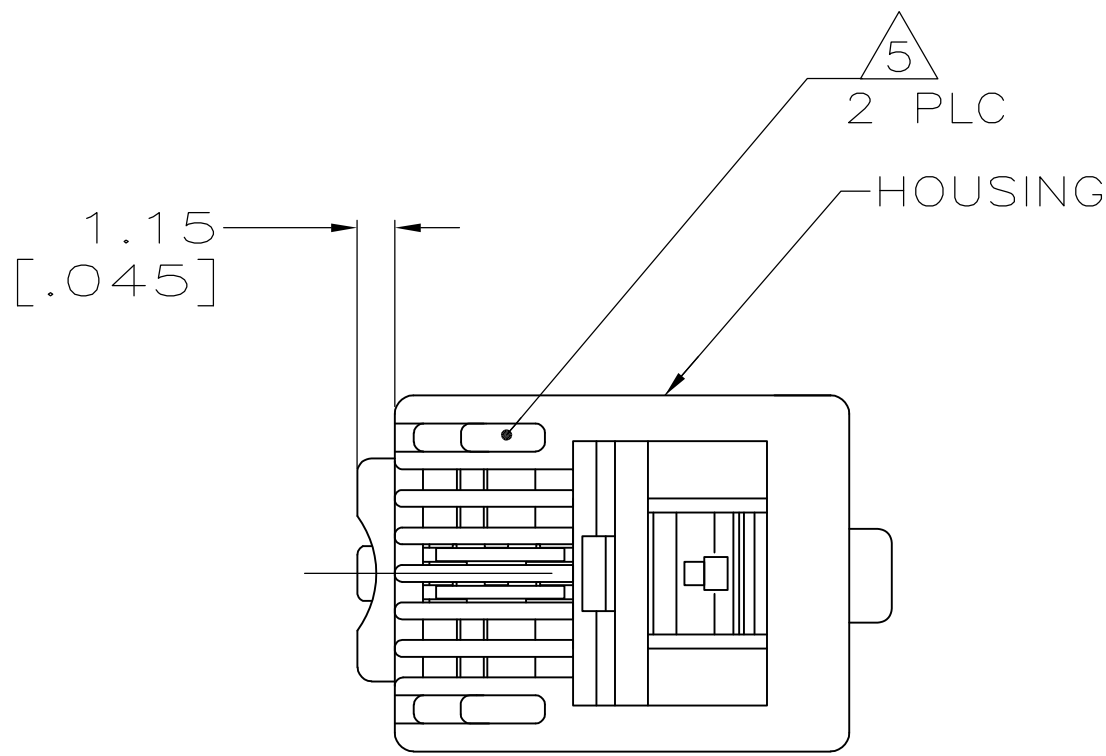
Tel: +86-755-8981 8866 Fax: +86-755-8427 6832

Email & Skype: [info@chipsmall.com](mailto:info@chipsmall.com) Web: [www.chipsmall.com](http://www.chipsmall.com)

Address: A1208, Overseas Decoration Building, #122 Zhenhua RD., Futian, Shenzhen, China

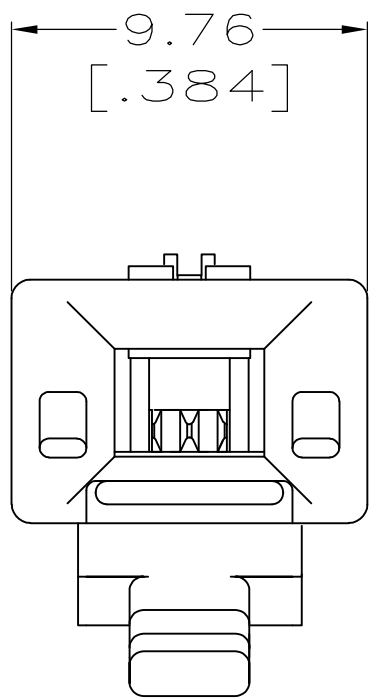
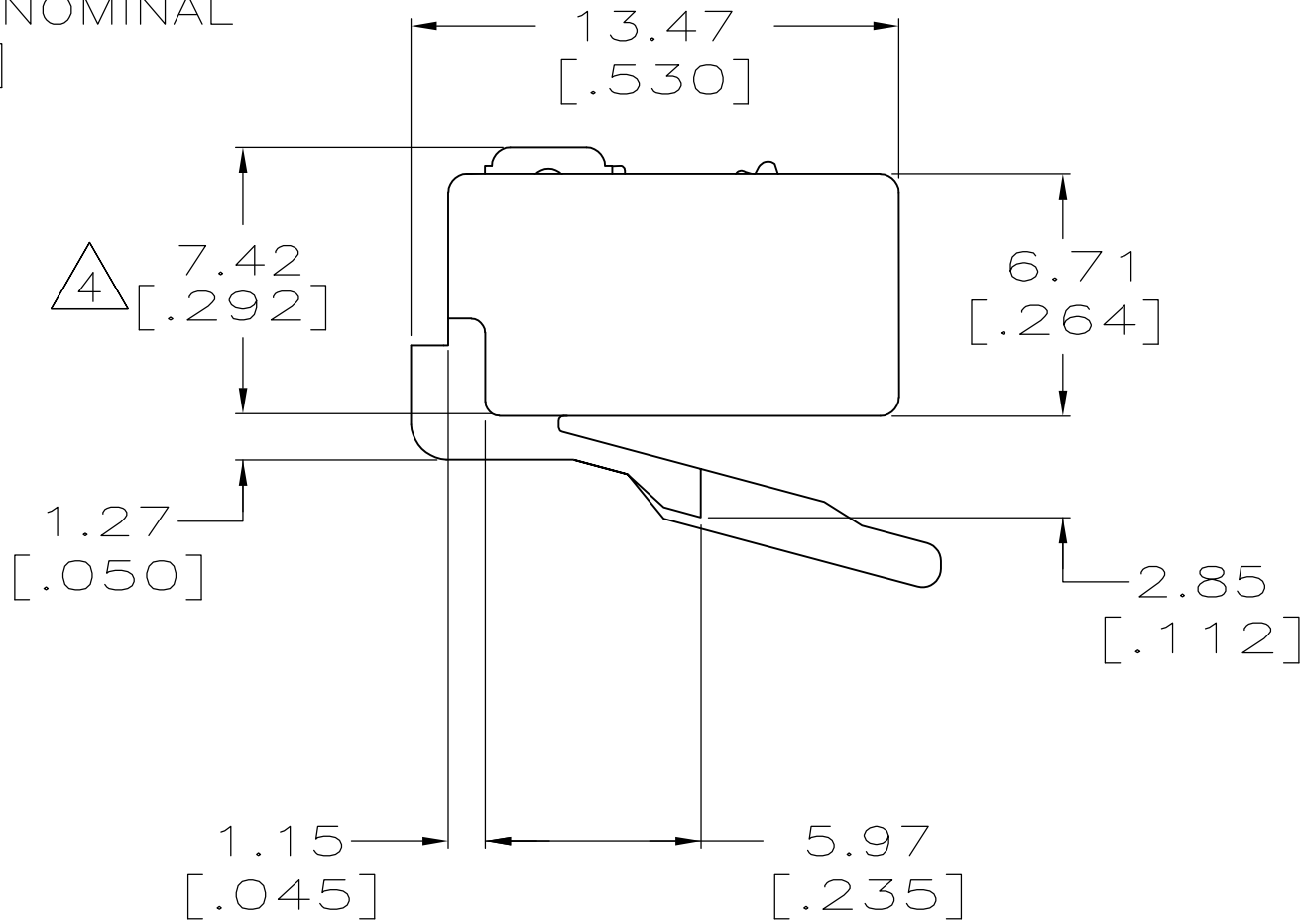
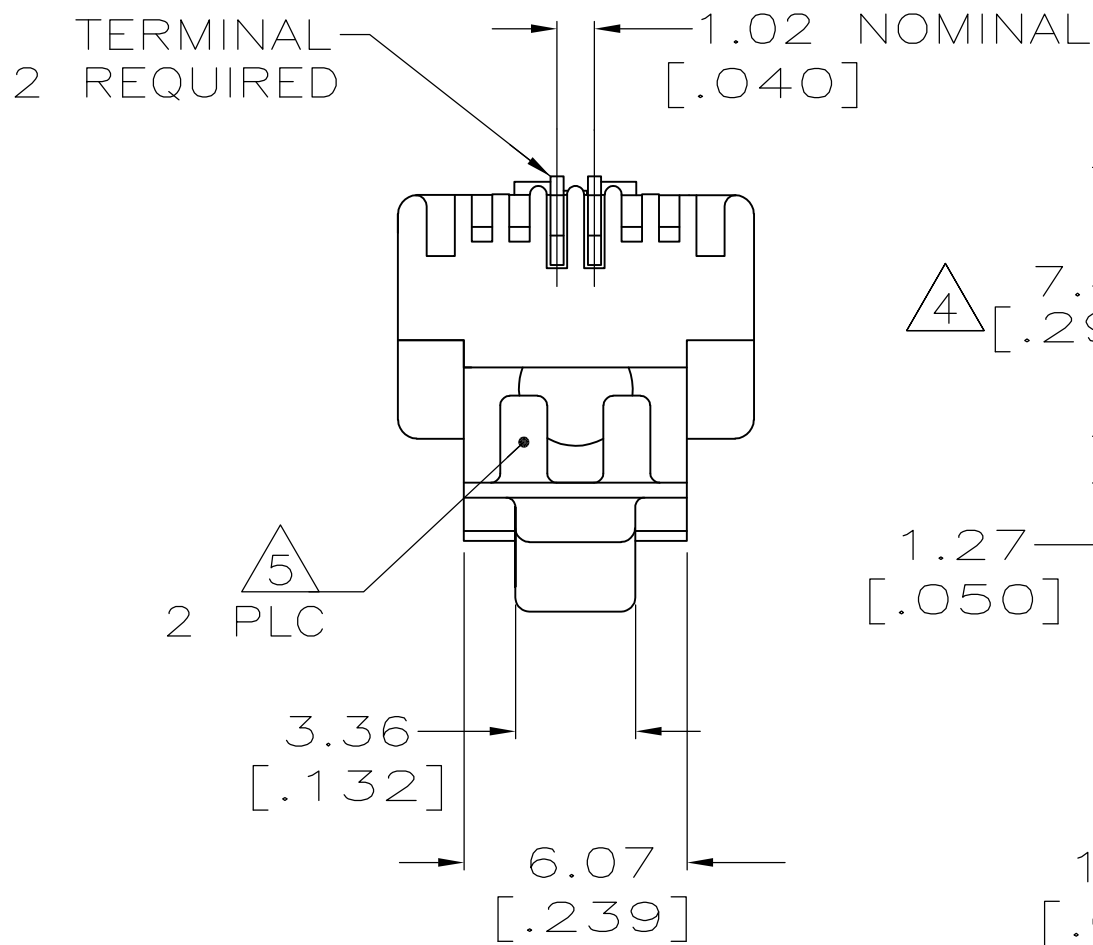


LOC	DIST	REVISIONS			GG EL		
		P	LTR	DESCRIPTION	DATE	DWN	APVD
HM	00		R	REV PER ECO-12-012918	09JUL2012	JM	JG



1. ALL DIMENSIONS SHOWN ARE FOR REFERENCE ONLY UNLESS OTHERWISE SPECIFIED.

2. MATERIAL: HOUSING—POLYCARBONATE CLEAR.  
TERMINAL— 0.36[.014] THICK PHOS BRONZE PLATED WITH 1.27um[.000050] MINIMUM THICK GOLD IN LOCALIZED GOLD PLATE AREA, OVER 2.54um [.000100] MINIMUM THICK NICKEL UNDERPLATE.



3. PLUG WILL EXCEPT 26 OR 28 AWG STRANDED OR TINSEL WIRE HAVING A MAXIMUM INSULATION OF  $\phi 0.99$ [.039] AND A MAXIMUM OVAL CABLE JACKET OF 2.29x4.06 [.090x.160].

4. TERMINATED DIMENSION TO MEET FCC REQUIREMENTS .237±.005.

5. REELED PRODUCT ON STRIP DOES NOT HAVE VOID CORING ILLUSTRATED ON THIS DRAWING.

SUPSD BY 5-641333-2	1000 PER PACKAGE		5-641333-2	
	REELED 5		641333-1	
		DESCRIPTION		PART NO.
THIS DRAWING IS A CONTROLLED DOCUMENT.		DWN L. HALL 20FEB2007	TE Connectivity	
		CHK C. DOOLEY 20FEB2007		
<div>DIMENSIONS: INCHES</div> <div></div>		APVD C. DOOLEY 20FEB2007	NAME MODULAR PLUG ASSEMBLY, 2 POSITION, LINE STRANDED WIRE	
		PRODUCT SPEC 108-1163		
MATERIAL -		APPLICATION SPEC 114-6016	SIZE A2	
		WEIGHT -		
		CAGE CODE 00779		DRAWING NO 641333
		CUSTOMER DRAWING		RESTRICTED TO -
		SCALE 5:1	SHEET 1 of 1	REV R