



Chipsmall Limited consists of a professional team with an average of over 10 year of expertise in the distribution of electronic components. Based in Hongkong, we have already established firm and mutual-benefit business relationships with customers from,Europe,America and south Asia,supplying obsolete and hard-to-find components to meet their specific needs.

With the principle of “Quality Parts,Customers Priority,Honest Operation,and Considerate Service”,our business mainly focus on the distribution of electronic components. Line cards we deal with include Microchip,ALPS,ROHM,Xilinx,Pulse,ON,Everlight and Freescale. Main products comprise IC,Modules,Potentiometer,IC Socket,Relay,Connector.Our parts cover such applications as commercial,industrial, and automotives areas.

We are looking forward to setting up business relationship with you and hope to provide you with the best service and solution. Let us make a better world for our industry!



## Contact us

Tel: +86-755-8981 8866 Fax: +86-755-8427 6832

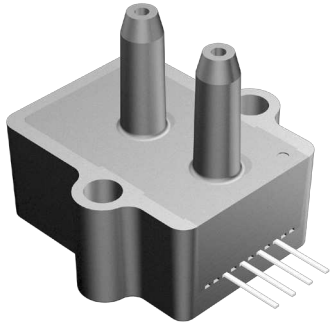
Email & Skype: info@chipsmall.com Web: www.chipsmall.com

Address: A1208, Overseas Decoration Building, #122 Zhenhua RD., Futian, Shenzhen, China



# Amplified Low Pressure Sensors

1 mbar (0.4 In H<sub>2</sub>O) to 60 In H<sub>2</sub>O Pressure Sensors



## Features

- 0 to 1 mbar to 0 to 60 In H<sub>2</sub>O Pressure Ranges
- Ratiometric 4V Output
- Temperature Compensated
- Calibrated Zero and Span

## Applications

- Medical Instrumentation
- Environmental Controls
- HVAC

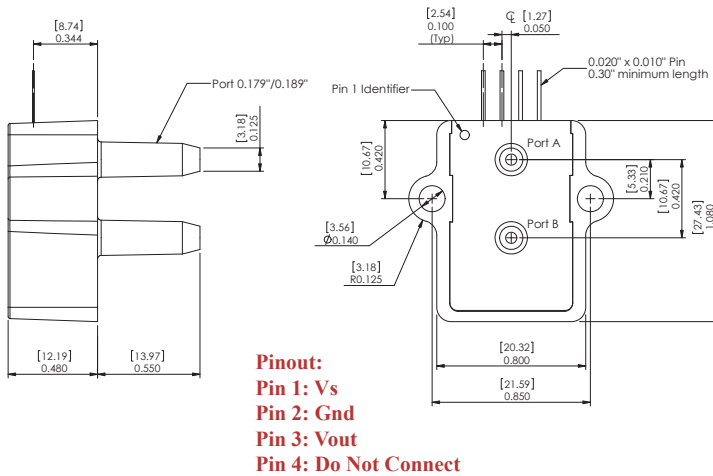
## General Description

The Amplified line of low pressure sensors are based upon a proprietary technology to reduce all output offset or common mode errors. This model provides a ratiometric 4-volt output with superior output offset characteristics. Output offset errors due to change in temperature, stability to warm-up, stability to long time period, and position sensitivity are all significantly reduced when compared to conventional compensation methods. In addition the sensor utilizes a silicon, micromachined, stress concentration enhanced structure to provide a very linear output to measured pressure.

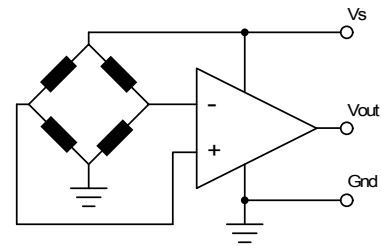
These calibrated and temperature compensated sensors give an accurate and stable output over a wide temperature range. This series is intended for use with non-corrosive, non-ionic working fluids such as air, dry gases and the like.

The output of the device is ratiometric to the supply voltage over a supply voltage range of 4.5 to 5.5 volts.

## Physical Dimensions



## Equivalent Circuit



## Approvals

MKT	DATE	MFG	DATE	ENG	DATE	QA	DATE
<input type="checkbox"/> As Is <input type="checkbox"/> With Change		<input type="checkbox"/> As Is <input type="checkbox"/> With Change		<input type="checkbox"/> As Is <input type="checkbox"/> With Change		<input type="checkbox"/> As Is <input type="checkbox"/> With Change	



## Pressure Sensor Ratings

Supply Voltage VS	+4.5 to +5.5 Vdc
Common-mode pressure	-10 to +10 psig
Lead Temperature, max (soldering 2-4 sec.)	250°C

## Environmental Specifications

Temperature Ranges	
Compensated	5 to 50° C
Operating	-25 to 85° C
Storage	-40 to 125° C
Humidity Limits	0 to 95% RH (non condensing)

## Standard Pressure Ranges

Part Number	Operating Pressure	Nominal Span	Proof Pressure	Burst Pressure
1 MBAR-D-4V	±1 mbar	4 V	100 InH2O	200 InH2O
1 INCH-D-4V	±1 InH2O	4 V	100 InH2O	200 InH2O
1 INCH-G-4V	0 - 1 InH2O	4 V	100 InH2O	200 InH2O
2.5 INCH-D-4V	±2.5 InH2O	4 V	200 InH2O	300 InH2O
2.5 INCH-G-4V	0 - 2.5 InH2O	4V	200 InH2O	300 InH2O
5 INCH-D-4V	± 5 InH2O	4 V	200 InH2O	300 InH2O
5 INCH-G-4V	0 - 5 InH2O	4 V	200 InH2O	300 InH2O
10 INCH-D-4V	±10 InH2O	4 V	200 InH2O	300 InH2O
10 INCH-G-4V	0 - 10 InH2O	4 V	200 InH2O	300 InH2O
20 INCH-D-4V	±20 InH2O	4 V	300 InH2O	500 InH2O
20 INCH-G-4V	0 - 20 InH2O	4 V	300 InH2O	500 InH2O
30 INCH-D-4V	±30 InH2O	4 V	500 InH2O	800 InH2O
30 INCH-G-4V	0 - 30 InH2O	4V	500 InH2O	800 InH2O
40 INCH-G-4V	0 - 40 InH2O	4V	500 InH2O	800 InH2O
60 INCH-G-4V	0 - 60 InH2O	4V	500 InH2O	800 InH2O

## Performance Characteristics for: 1 MBAR-D-4V

Parameter, NOTE 1	Minimum	Nominal	Maximum	Units
Operating Range, differential pressure		±1.0		mbar
Output Span, NOTE 5	±1.80	±2.0	±2.20	V
Offset Voltage @ zero differential pressure	2.00	2.25	2.50	V
Offset Temperature Shift (5°C-50°C), NOTE 2			±120	mV
Offset Warm-up Shift, NOTE 3		±20		mV
Offset Position Sensitivity (±1g)		±40		mV
Offset Long Term Drift (one year)		±20		mV
Linearity, hysteresis error, NOTE 4		0.05	0.25	%FSS
Span Temperature Shift (5°C-50°C), NOTE 2			±4	%FSS

## Performance Characteristics for 1 INCH-D-4V

Parameter, note 1	Minimum	Nominal	Maximum	Units
Operating Range, differential pressure		±1.0		inH2O
Output Span, note 5	±1.90	±2.0	±2.10	V
Offset Voltage @ zero differential pressure	2.15	2.25	2.35	V
Offset Temperature Shift (5°C-50°C), note 2			±60	mV
Offset Warm-up Shift, note 3		±10		mV
Offset Position Sensitivity (±1g)		±5		mV
Offset Long Term Drift (one year)		±10		mV
Linearity, hysteresis error, note 4		0.05	0.25	%FSS
Span Temperature Shift (5°C-50°C), note 2			±2	%FSS

## Performance Characteristics for 1 INCH-G-4V

Parameter, note 1	Minimum	Nominal	Maximum	Units
Operating Range, gage pressure		1.0		inH2O
Output Span, note 5	3.90	4.0	4.10	V
Offset Voltage @ zero pressure	0.15	0.25	0.35	V
Offset Temperature Shift (5°C-50°C), note 2			±60	mV
Offset Warm-up Shift, note 3		±10		mV
Offset Position Sensitivity (±1g)		±15		mV
Offset Long Term Drift (one year)		±10		mV
Linearity, hysteresis error, note 4		0.05	0.25	%FSS
Span Temperature Shift (5°C-50°C), note 2			±2	%FSS

## Performance Characteristics for 2.5 INCH-D-4V

Parameter, note 1	Minimum	Nominal	Maximum	Units
Operating Range, differential pressure		±2.5		inH2O
Output Span, note 5	±1.90	±2.0	±2.10	V
Offset Voltage @ zero differential pressure	2.15	2.25	2.35	V
Offset Temperature Shift (5°C-50°C), note 2			±60	mV
Offset Warm-up Shift, note 3		±5		mV
Offset Position Sensitivity (±1g)		±5		mV
Offset Long Term Drift (one year)		±5		mV
Linearity, hysteresis error, note 4		0.05	0.25	%FSS
Span Temperature Shift (5°C-50°C), note 2			±2	%FSS



## Performance Characteristics for 2.5 INCH-G-4V

Parameter, note 1	Minimum	Nominal	Maximum	Units
Operating Range, gage pressure		2.5		inH2O
Output Span, note 5	3.90	4.0	4.10	V
Offset Voltage @ zero gage pressure	0.15	0.25	0.35	V
Offset Temperature Shift (5°C-50°C), note 2			±60	mV
Offset Warm-up Shift, note 3		±5		mV
Offset Position Sensitivity (±1g)		±5		mV
Offset Long Term Drift (one year)		±5		mV
Linearity, hysteresis error, note 4		0.05	0.25	%FSS
Span Temperature Shift (5°C-50°C), note 2			±2	%FSS

## Performance Characteristics for 5 INCH-D-4V

Parameter, note 1	Minimum	Nominal	Maximum	Units
Operating Range, differential pressure		±5.0		inH2O
Output Span, note 5	±1.90	±2.0	±2.10	V
Offset Voltage @ zero differential pressure	2.15	2.25	2.35	V
Offset Temperature Shift (5°C-50°C), note 2			±40	mV
Offset Warm-up Shift, note 3		±5		mV
Offset Position Sensitivity (±1g)		±5		mV
Offset Long Term Drift (one year)		±5		mV
Linearity, hysteresis error, note 4		0.05	0.25	%FSS
Span Temperature Shift (5°C-50°C), note 2			±1	%FSS

## Performance Characteristics for: 5 INCH-G-4V

Parameter, NOTE 1	Minimum	Nominal	Maximum	Units
Operating Range, gage pressure		5.0		inH2O
Output Span, NOTE 5	3.90	4.0	4.10	V
Offset Voltage @ zero pressure	0.15	0.25	0.35	V
Offset Temperature Shift (5°C-50°C), NOTE 2			±40	mV
Offset Warm-up Shift, NOTE 3		±5		mV
Offset Position Sensitivity (±1g)		±5		mV
Offset Long Term Drift (one year)		±5		mV
Linearity, hysteresis error, NOTE 4		0.05	0.25	%FSS
Span Temperature Shift (5°C-50°C), NOTE 2			±1	%FSS

## Performance Characteristics for: 10 INCH-D-4V

Parameter, NOTE 1	Minimum	Nominal	Maximum	Units
Operating Range, differential pressure		±10.0		inH2O
Output Span, NOTE 5	±1.90	±2.0	±2.10	V
Offset Voltage @ zero differential pressure	2.15	2.25	2.35	V
Offset Temperature Shift (5°C-50°C), NOTE 2			±20	mV
Offset Warm-up Shift, NOTE 3		±5		mV
Offset Position Sensitivity (±1g)		±5		mV
Offset Long Term Drift (one year)		±5		mV
Linearity, hysteresis error, NOTE 4		0.05	0.25	%FSS
Span Temperature Shift (5°C-50°C), NOTE 2			±1	%FSS

## Performance Characteristics for: 10 INCH-G-4V

Parameter, NOTE 1	Minimum	Nominal	Maximum	Units
Operating Range, gage pressure		10.0		inH2O
Output Span, NOTE 5	3.90	4.0	4.10	V
Offset Voltage @ zero pressure	0.15	0.25	0.35	V
Offset Temperature Shift (5°C-50°C), NOTE 2			±20	mV
Offset Warm-up Shift, NOTE 3		±5		mV
Offset Position Sensitivity (±1g)		±5		mV
Offset Long Term Drift (one year)		±5		mV
Linearity, hysteresis error, NOTE 4		0.05	0.25	%FSS
Span Temperature Shift (5°C-50°C), NOTE 2			±1	%FSS

## Performance Characteristics for 20 INCH-D-4V

Parameter, note 1	Minimum	Nominal	Maximum	Units
Operating Range, differential pressure		±20.0		inH2O
Output Span, note 5	±1.90	±2.0	±2.10	V
Offset Voltage @ zero differential pressure	2.15	2.25	2.35	V
Offset Temperature Shift (5°C-50°C), note 2			±20	mV
Offset Warm-up Shift, note 3		±5		mV
Offset Position Sensitivity (±1g)		±5		mV
Offset Long Term Drift (one year)		±5		mV
Linearity, hysteresis error, note 4		0.05	0.25	%FSS
Span Temperature Shift (5°C-50°C), note 2			±1	%FSS



## Performance Characteristics for 20 INCH-G-4V

Parameter, note 1	Minimum	Nominal	Maximum	Units
Operating Range, gage pressure		20.0		inH2O
Output Span, note 5	3.90	4.0	4.1	V
Offset Voltage @ zero pressure	0.15	0.25	0.35	V
Offset Temperature Shift (5°C-50°C), note 2			±20	mV
Offset Warm-up Shift, note 3		±5		mV
Offset Position Sensitivity (±1g)		±5		mV
Offset Long Term Drift (one year)		±5		mV
Linearity, hysteresis error, note 4		0.05	0.25	%FSS
Span Temperature Shift (5°C-50°C), note 2			±1	%FSS

## Performance Characteristics for 30 INCH-D-4V

Parameter, note 1	Minimum	Nominal	Maximum	Units
Operating Range, differential pressure		±30.0		inH2O
Output Span, note 5	±1.90	±2.0	±2.10	V
Offset Voltage @ zero differential pressure	2.15	2.25	2.35	V
Offset Temperature Shift (5°C-50°C), note 2			±20	mV
Offset Warm-up Shift, note 3		±5		mV
Offset Position Sensitivity (±1g)		±5		mV
Offset Long Term Drift (one year)		±5		mV
Linearity, hysteresis error, note 4		0.05	0.25	%FSS
Span Temperature Shift (5°C-50°C), note 2			±1	%FSS

## Performance Characteristics for 30 INCH-G-4V

Parameter, NOTE 1	Minimum	Nominal	Maximum	Units
Operating Range, gage pressure		30.0		inH2O
Output Span, NOTE 5	3.9	4.0	4.1	V
Offset Voltage @ zero pressure	0.15	0.25	0.35	V
Offset Temperature Shift (5°C-50°C), NOTE 2			±20	mV
Offset Warm-up Shift, NOTE 3		±5		mV
Offset Position Sensitivity (±1g)		±5		mV
Offset Long Term Drift (one year)		±5		mV
Linearity, hysteresis error, NOTE 4		0.05	0.25	%FSS
Span Temperature Shift (5°C-50°C), NOTE 2			±1	%FSS

## Performance Characteristics for 40 INCH-G-4V

Parameter, NOTE 1	Minimum	Nominal	Maximum	Units
Operating Range, gage pressure		40.0		inH2O
Output Span, NOTE 5	3.9	4.0	4.1	V
Offset Voltage @ zero pressure	0.15	0.25	0.35	V
Offset Temperature Shift (5°C-50°C), NOTE 2			±20	mV
Offset Warm-up Shift, NOTE 3		±5		mV
Offset Position Sensitivity (±1g)		±5		mV
Offset Long Term Drift (one year)		±5		mV
Linearity, hysteresis error, NOTE 4		0.05	0.25	%FSS
Span Temperature Shift (5°C-50°C), NOTE 2			±1	%FSS

## Performance Characteristics for 60 INCH-G-4V

Parameter, NOTE 1	Minimum	Nominal	Maximum	Units
Operating Range, gage pressure		60.0		inH2O
Output Span, NOTE 5	3.9	4.0	4.1	V
Offset Voltage @ zero pressure	0.15	0.25	0.35	V
Offset Temperature Shift (5°C-50°C), NOTE 2			±20	mV
Offset Warm-up Shift, NOTE 3		±5		mV
Offset Position Sensitivity (±1g)		±5		mV
Offset Long Term Drift (one year)		±5		mV
Linearity, hysteresis error, NOTE 4		0.05	0.25	%FSS
Span Temperature Shift (5°C-50°C), NOTE 2			±1	%FSS

**Pressure Response:** for any pressure applied the response time to get to 90% of pressure applied is typically less than 500 useconds.

### Specification Notes

NOTE 1: ALL PARAMETERS ARE MEASURED AT 5.0 VOLT EXCITATION, FOR THE NOMINAL FULL SCALE PRESSURE AND ROOM TEMPERATURE UNLESS OTHERWISE SPECIFIED. PRESSURE MEASUREMENTS ARE WITH POSITIVE PRESSURE APPLIED TO PORT B.

NOTE 2: SHIFT IS RELATIVE TO 25°C.

NOTE 3: SHIFT IS WITHIN THE FIRST HOUR OF EXCITATION APPLIED TO THE DEVICE.

NOTE 4: MEASURED AT ONE-HALF FULL SCALE RATED PRESSURE USING BEST STRAIGHT LINE CURVE FIT.

NOTE 5: THE SPAN IS THE ALGEBRAIC DIFFERENCE BETWEEN FULL SCALE OUTPUT VOLTAGE AND THE OFFSET VOLTAGE.

All Sensors reserves the right to make changes to any products herein. All Sensors does not assume any liability arising out of the application or use of any product or circuit described herein, neither does it convey any license under its patent rights nor the rights of others.

all sensors

e www.allsensors.com

f 408 225 2079

a 16035 Vineyard Blvd. Morgan Hill, CA 95037

