



Chipsmall Limited consists of a professional team with an average of over 10 year of expertise in the distribution of electronic components. Based in Hongkong, we have already established firm and mutual-benefit business relationships with customers from,Europe,America and south Asia,supplying obsolete and hard-to-find components to meet their specific needs.

With the principle of “Quality Parts,Customers Priority,Honest Operation,and Considerate Service”,our business mainly focus on the distribution of electronic components. Line cards we deal with include Microchip,ALPS,ROHM,Xilinx,Pulse,ON,Everlight and Freescale. Main products comprise IC,Modules,Potentiometer,IC Socket,Relay,Connector.Our parts cover such applications as commercial,industrial, and automotives areas.

We are looking forward to setting up business relationship with you and hope to provide you with the best service and solution. Let us make a better world for our industry!



Contact us

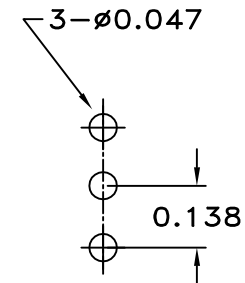
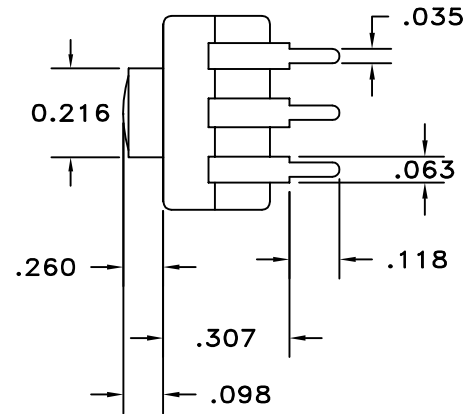
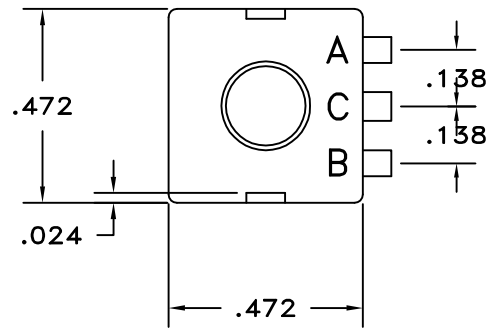
Tel: +86-755-8981 8866 Fax: +86-755-8427 6832

Email & Skype: info@chipsmall.com Web: www.chipsmall.com

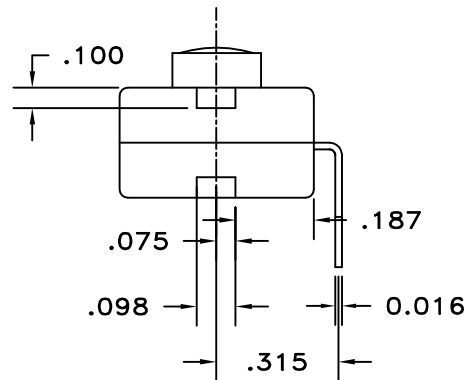
Address: A1208, Overseas Decoration Building, #122 Zhenhua RD., Futian, Shenzhen, China



LTR	EN	DESCRIPTION	APPR	BY	DATE
A	-	INITIAL RELEASE	RB	NH	11-10-03
A1	-	ADDED ELECTRICAL RATING 12VDC, 500mA	MT	DC	08-27-12



RECOMMENDED MOUNTING PATTERN

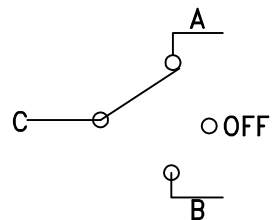


JUDCO INVENTORY NO. 50-0041-00
SWITCH TYPE: SPDT, J 977-5 (ON A- OFF ON B)
ELECTRICAL RATING: 12 VDC, 500mA

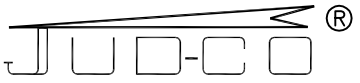
CUSTOMER:
CUSTOMER:

APPROVED BY: _____

DATE: _____



SCHEMATIC

DIMENSIONS IN INCHES DIMENSIONS ARE REFERENCE		 HARBOR CITY CALIFORNIA	
DRAWN: NH 11-10-03		TITLE MINI FLPK,J977-5	
APPR: KJ 08-24-12		ON-OFF-ON, 3 RA TRMS	
ENGG: IS 08-24-12		DWG. NO. 1415-502	
1415U502A1.DWG		SHEET 1 OF 1	