



Chipsmall Limited consists of a professional team with an average of over 10 year of expertise in the distribution of electronic components. Based in Hongkong, we have already established firm and mutual-benefit business relationships with customers from,Europe,America and south Asia,supplying obsolete and hard-to-find components to meet their specific needs.

With the principle of “Quality Parts,Customers Priority,Honest Operation,and Considerate Service”,our business mainly focus on the distribution of electronic components. Line cards we deal with include Microchip,ALPS,ROHM,Xilinx,Pulse,ON,Everlight and Freescale. Main products comprise IC,Modules,Potentiometer,IC Socket,Relay,Connector.Our parts cover such applications as commercial,industrial, and automotives areas.

We are looking forward to setting up business relationship with you and hope to provide you with the best service and solution. Let us make a better world for our industry!



Contact us

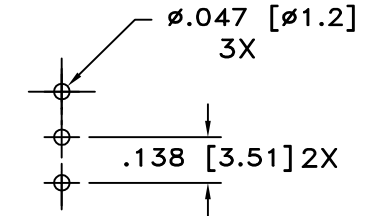
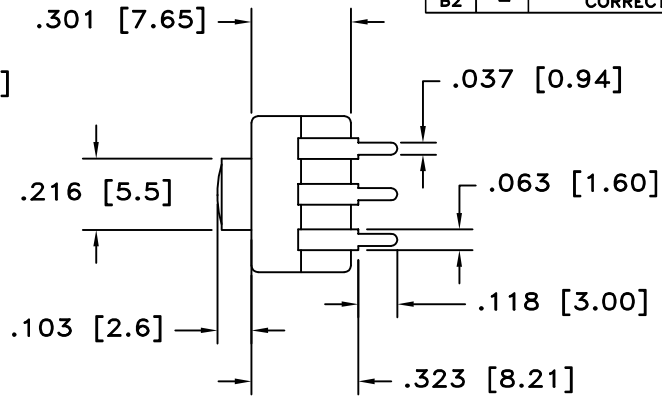
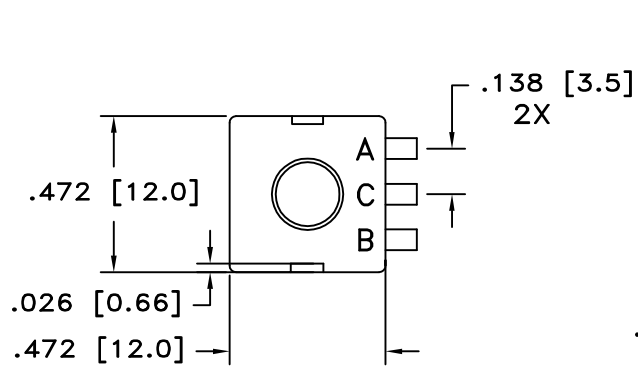
Tel: +86-755-8981 8866 Fax: +86-755-8427 6832

Email & Skype: info@chipsmall.com Web: www.chipsmall.com

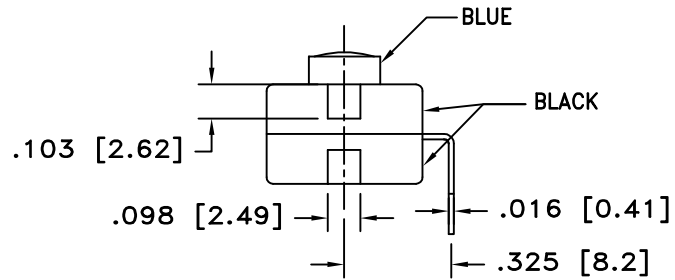
Address: A1208, Overseas Decoration Building, #122 Zhenhua RD., Futian, Shenzhen, China



LTR	EN	DESCRIPTION	APPR	BY	DATE
A	-	INITIAL RELEASE	RB	NH	09-30-05
A1	-	ADDED CUSTOMER PART NUMBER.	RB	DC	12-20-05
A2	-	ADDED COLOR OF ACTUATOR (TEAL)	RB	DC	12-28-05
A3	-	CHANGE SCHEMATIC DIAGRAM TO MATCH SWITCH OPERATION.	RB	DC	02-13-06
B	-	UPDATED DRAWING TO MATCH SAMPLE PARTS. CALL OUT DIMENSIONS BOTH IN INCHES & MM. CHANGE PLUNGER COLOR FROM TEAL TO BLUE.	MT	DC	10-18-07
B1	-	ADDED ELETRICAL RATING 12VDC, 500mA	MT	DC	08-24-12
B2	-	CORRECTED SCHEMATIC DIAGRAM	MT	DC	09-07-12

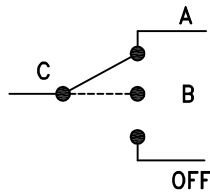


RECOMMENDED MOUNTING PATTERN




JUDCO INVENTORY NO. 50-0088-00
 SWITCH TYPE: SPDT, J 977-8 (ON A- ON B-OFF)
 ELECTRICAL RATING: 12 VDC, 500mA

CUSTOMER:
 CUSTOMER PN:
 APPROVED BY: _____
 DATE: _____



SCHEMATIC

DIMENSIONS IN INCHES DIMENSIONS ARE REFERENCE		 HARBOR CITY CALIFORNIA TITLE MINI FLPK, J977-8 W/BENT TERMINALS
DRAWN: NH	09-30-05	
APPR: KJ	09-07-12	DWG. NO. 1415-862
ENG'G: IS	09-07-12	SHEET 1 OF 1
1415U862B2.DWG		

This document embodies a product, component, and/or design proprietary to JUDCO MANUFACTURING INC., and which is protected either as a trade secret, by U.S. Patent, or by copyright. It may not be used in any way without written express consent of JUDCO MANUFACTURING INC.