



Chipsmall Limited consists of a professional team with an average of over 10 year of expertise in the distribution of electronic components. Based in Hongkong, we have already established firm and mutual-benefit business relationships with customers from,Europe,America and south Asia,supplying obsolete and hard-to-find components to meet their specific needs.

With the principle of “Quality Parts,Customers Priority,Honest Operation,and Considerate Service”,our business mainly focus on the distribution of electronic components. Line cards we deal with include Microchip,ALPS,ROHM,Xilinx,Pulse,ON,Everlight and Freescale. Main products comprise IC,Modules,Potentiometer,IC Socket,Relay,Connector.Our parts cover such applications as commercial,industrial, and automotives areas.

We are looking forward to setting up business relationship with you and hope to provide you with the best service and solution. Let us make a better world for our industry!



## Contact us

Tel: +86-755-8981 8866 Fax: +86-755-8427 6832

Email & Skype: info@chipsmall.com Web: www.chipsmall.com

Address: A1208, Overseas Decoration Building, #122 Zhenhua RD., Futian, Shenzhen, China





# TONER REACTIVE FOILS

## MASTER REFERENCE OF ALL "PULSAR" PRODUCTS:

<b>PCB "Fab-In-A-Box"</b>	<a href="#">182-1027-ND</a>
- TTS Transfer Paper	<a href="#">182-1003-ND</a>
- GreenTRF film	<a href="#">182-1021-ND</a> (Shown Here)
- WhiteTRF film	<a href="#">182-1022-ND</a> (Shown Here)
- PCB (Single Sided)	<a href="#">182-1017-ND</a>
- PCB (Double Sided)	<a href="#">182-1018-ND</a>
<b>DecalPRO®</b>	<a href="#">182-1026-ND</a>
<b>"Combo" (both kits)</b>	<a href="#">182-1028-ND</a>
<b>GBC® Laminator ("TIA")</b>	<a href="#">182-1029-ND</a>

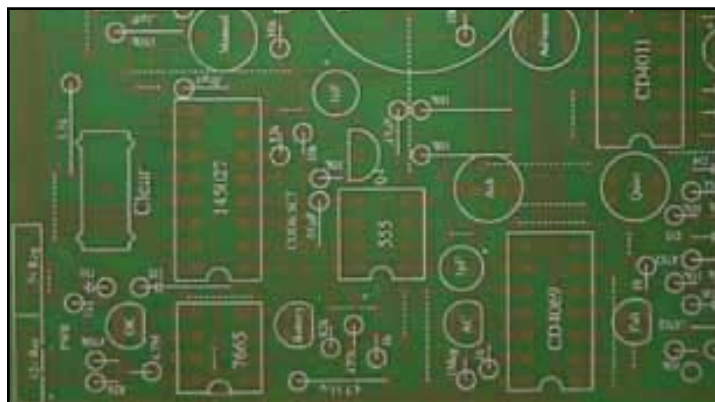
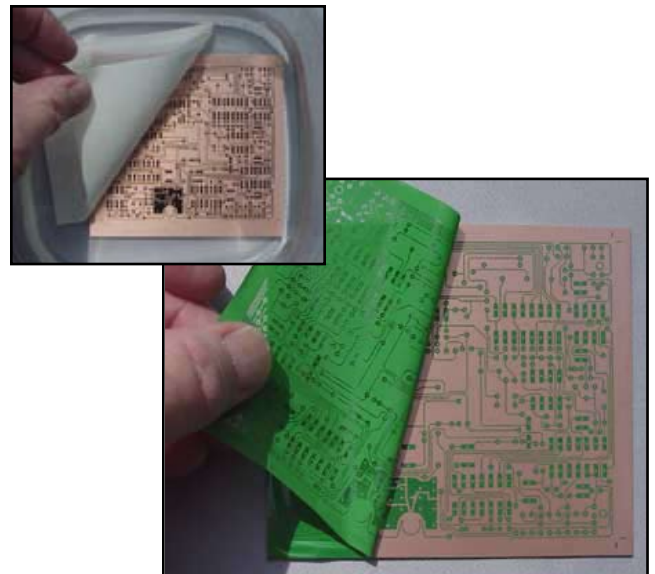
Toner Reactive Foils (or "TRF" for short) are specialized foils that will transfer to a toner image when subjected to high pressure and heat, effectively "colorizing" the black toner to either a green or white color.

The PCB "Fab-In-A-Box" circuit board fabrication system utilizes these two unique foils to achieve both a high degree of circuit trace resolution and to enable silk-screen like markings directly to the finished PCB. Although you can apply these foils using an ordinary household iron, they are best applied using the "TIA" laminator.

Both "flat pack" foils are packaged 8" wide by 15' long wrapped on a 6"x9" cardboard form.

## GreenTRF:

The "GreenTRF" is applied over the toner image that has been first transferred to the raw copper laminate. As you can see, the green film will transfer exactly to the shape of the black toner effectively making it pure green in color. This foil is plastic so it completely seals what would otherwise be considered a porous otherwise porous toner to prevent "pitting" of the copper under the circuit image.



## WhiteTRF:

The "WhiteTRF" is used to convert the optional application of a silk-screen legend layout on top of the board. Here again, not unlike the GreenTRF, the white foil is applied over the black toner and voila! one commercially looking PCB ready for populating and soldering. This stage of making your project is actually fun... no more drudgery of having to make the board. The best part is that an entire double-sided PCB can be made in under 15 minutes!

**Pulsar**  
PROFESSIONAL *fx*

21 Carriage Drive • Crawfordville, FL 32327-2496

For more information about our techniques we invite you to visit our website at: "[www.pcbprofx.com](http://www.pcbprofx.com)" or call us at (850) 926-2009 9am-5pm EST