



Chipsmall Limited consists of a professional team with an average of over 10 year of expertise in the distribution of electronic components. Based in Hongkong, we have already established firm and mutual-benefit business relationships with customers from,Europe,America and south Asia,supplying obsolete and hard-to-find components to meet their specific needs.

With the principle of “Quality Parts,Customers Priority,Honest Operation,and Considerate Service”,our business mainly focus on the distribution of electronic components. Line cards we deal with include Microchip,ALPS,ROHM,Xilinx,Pulse,ON,Everlight and Freescale. Main products comprise IC,Modules,Potentiometer,IC Socket,Relay,Connector.Our parts cover such applications as commercial,industrial, and automotives areas.

We are looking forward to setting up business relationship with you and hope to provide you with the best service and solution. Let us make a better world for our industry!



Contact us

Tel: +86-755-8981 8866 Fax: +86-755-8427 6832

Email & Skype: info@chipsmall.com Web: www.chipsmall.com

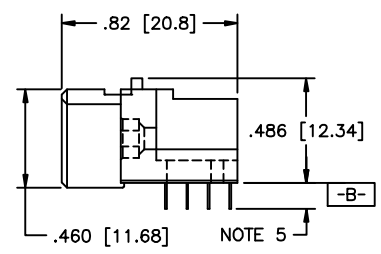
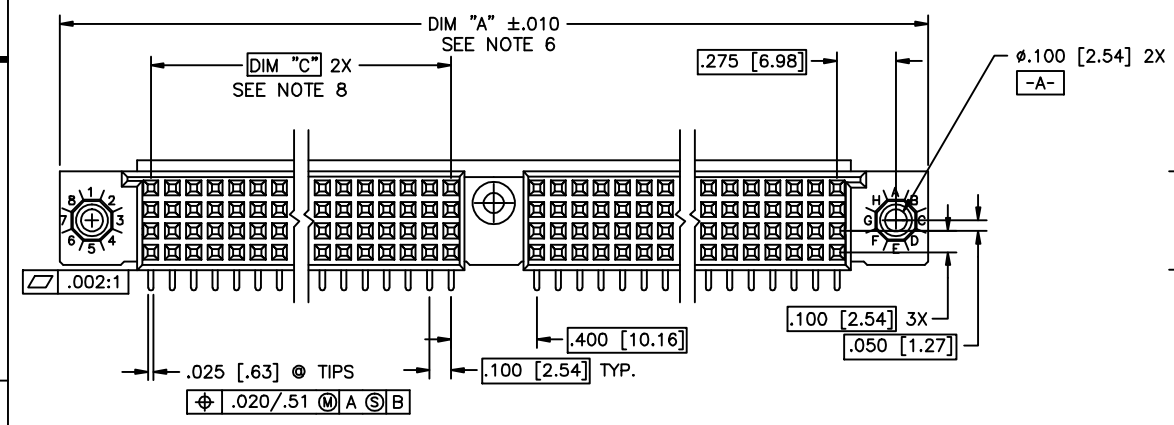
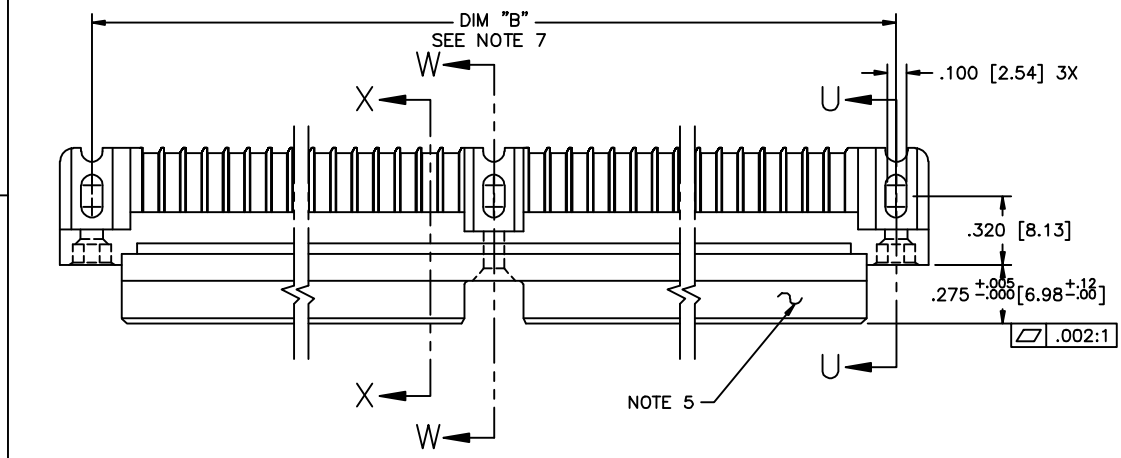
Address: A1208, Overseas Decoration Building, #122 Zhenhua RD., Futian, Shenzhen, China





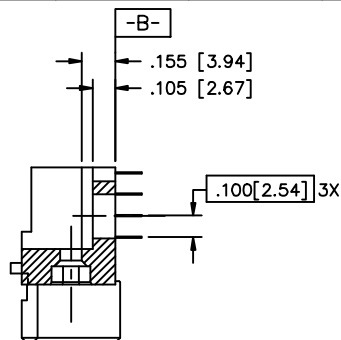
Copyright FCI

PRODUCT NUMBER
SEE NOTE 1

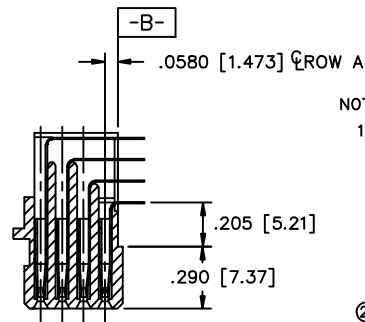


mat'l. code SEE NOTE 3				surface ISO 1902	tolerance ISO 406 ISO 1101	projection INCH/MM	product family HPC
ltr	ecp no	dr	date	tolerances unless otherwise specified		scale 1:1	title 4 ROW R/A RECEPTACLE SOLDER TAIL, 1 GUIDE PIN
F	v41511	GAH	10/13/94	angles	linear		
G	v50266	SAR	9/05/95				dwg no 50004
H	v82251	HTB	12/28/98	0±2'			
J	v00253	JWS	1/12/00	dr	D. SHEAFFER	1/07/90	sheet 1 of 2 size A3
K	v05-0510	LP	7/18/05	engr	S. CLARK	1/07/90	
L	m06-0255	EAE	7/06/06	chr	S. CLARK	1/07/90	type Product Customer Drawing
M	m08-0280	AGS	9/30/08	appd	S. CLARK	1/07/90	
sheet	revision	M	M				
index	sheet	1	2				

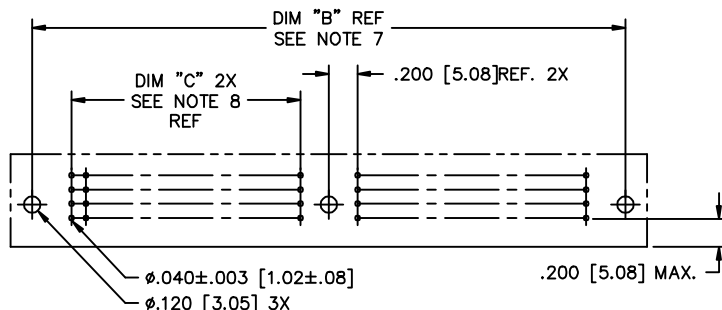
PRODUCT NUMBER SEE NOTE 1	NUMBER OF POSITIONS SEE NOTE 2	"Z" - TAIL LENGTH	SOLDER TAIL PLATING	CONTACT PLATING NOTE 11
50004-1YYYZ	YYY	NOTE 4	TIN LEAD	30u"/.76um Au
50004-3YYYZ	YYY	NOTE 4	TIN LEAD	50u"/1.27um Au
50004-5YYYZ	YYY	NOTE 4	TIN LEAD	30u"/.76um GXT
50004-5YYYZLF	YYY	NOTE 4	TIN	30u"/.76um GXT



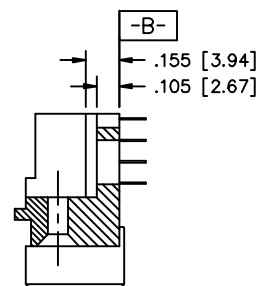
SECTION U-U



SECTION X-X



RECOMMENDED PCB LAYOUT
(ALL HOLES LOCATED ON .100 [2.54] GRID
UNLESS OTHERWISE SPECIFIED)



SECTION W-W

NOTES:

- PRODUCT NUMBERING CODE:
50004 - X YYY Z LF
LEAD FREE (OPTIONAL WITH GTX VERSION)
TAIL LENGTH (NOTE 4)
NO. OF POSITIONS (NOTE 2)
PLATING (SEE TABLE)
BASE NUMBER
- THIS PRODUCT IS CONFIGURED IN SIZES OF 20 THRU 122 COLUMNS IN INCREMENTS OF TWO.
i.e.: 20,22,24,26.....118,120,122.
- HOUSING MATERIAL: GLASS AND MINERAL FILLED THERMOPLASTIC.
CONTACT MATERIAL: BeCu
- "Z" - TAIL LENGTH OPTIONS:
E = .125±.010 / 3.18±.25
F = .145±.010 / 3.68±.25
H = .180±.010 / 4.57±.25
- COMPANY NAME, PART NUMBER AND LOT CODE TO APPEAR ON THIS SURFACE PER BUS-12-108.
- DIMENSION "A" CALCULATION = .100 (2.54) X NO. OF COLUMNS + 1.05 (26.7)
- DIMENSION "B" CALCULATION = .100 (2.54) X NO. OF COLUMNS + .750 (19.05)
- DIMENSION "C" CALCULATION = .100 (2.54) X NO. OF COLUMNS DIVIDED BY 2 - .100 (2.54)
- PRODUCT WITH "LF" SUFFIX MEETS EUROPEAN UNION DIRECTIVES AND OTHER COUNTRY REGULATIONS AS DESCRIBED IN GS-22-008.
- THIS HOUSING WILL WITHSTAND EXPOSURE TO 260 DEGREES C PEAK TEMPERATURE FOR 10 - 30 SECONDS IN A CONVECTION, INFRA-RED OR VAPOR PHASE REFLOW OVEN.
- PLATING OPTION:
MAY BE EITHER GOLD OR GXT PLATED AT MANUFACTURER'S OPTION.

mat'l. code	NOTE 3	surface	ISO 1902	tolerance	ISO 406	projection	product family
ltr	ecp no	dr	date	tolerances unless otherwise specified	linear	INCH/MM	HPC
M				angles	linear	scale 1:1	title
				σ±2'	linear		4 ROW R/A RECEPTACLE SOLDER TAIL, 1 GUIDE PIN
				dr	D. SHEAFFER	1/07/90	dwg no
				engr	S. CLARK	1/07/90	sheet 2 of 2 size
				chr	S. CLARK	1/07/90	A3
				appd	S. CLARK	1/07/90	type
sheet	revision						Product Customer Drawing
index	sheet						