



Chipsmall Limited consists of a professional team with an average of over 10 year of expertise in the distribution of electronic components. Based in Hongkong, we have already established firm and mutual-benefit business relationships with customers from,Europe,America and south Asia,supplying obsolete and hard-to-find components to meet their specific needs.

With the principle of "Quality Parts,Customers Priority,Honest Operation,and Considerate Service",our business mainly focus on the distribution of electronic components. Line cards we deal with include Microchip,ALPS,ROHM,Xilinx,Pulse,ON,Everlight and Freescale. Main products comprise IC,Modules,Potentiometer,IC Socket,Relay,Connector.Our parts cover such applications as commercial,industrial, and automotives areas.

We are looking forward to setting up business relationship with you and hope to provide you with the best service and solution. Let us make a better world for our industry!



Contact us

Tel: +86-755-8981 8866 Fax: +86-755-8427 6832

Email & Skype: info@chipsmall.com Web: www.chipsmall.com

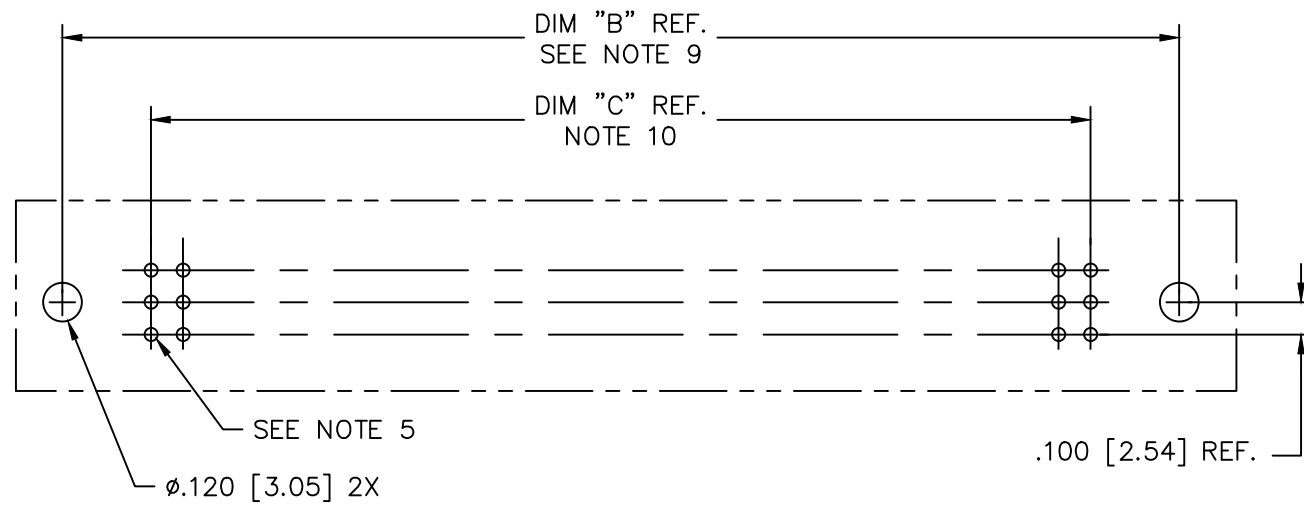
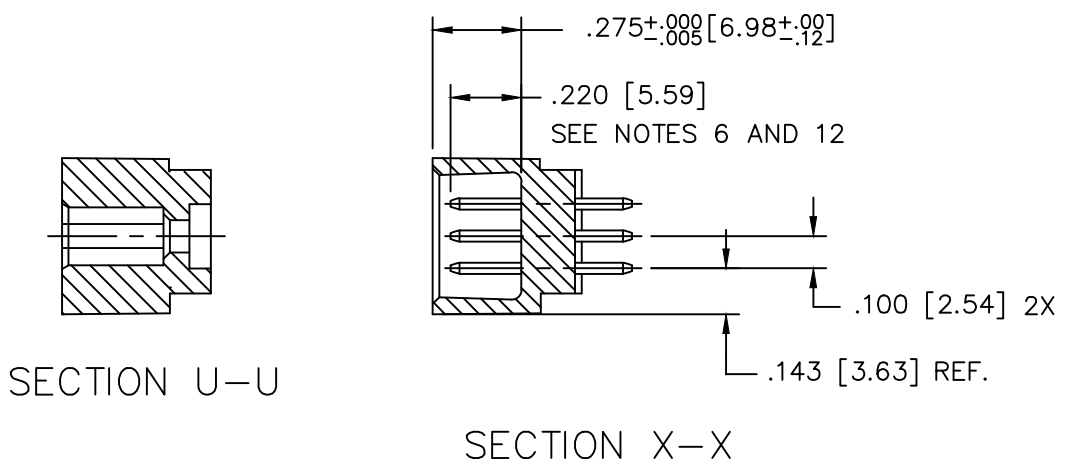
Address: A1208, Overseas Decoration Building, #122 Zhenhua RD., Futian, Shenzhen, China



PRODUCT NUMBER
SEE TABLE

NOTES:

- ① PRODUCT NUMBERING CODE:
50006 - X YYY Z LF
LEAD FREE (OPTIONAL)
TAIL LENGTH SEE TABLE
NO. OF POSITIONS SEE NOTE 2
PLATING SEE TABLE
BASE NUMBER
- ② THIS PRODUCT IS CONFIGURED IN SIZES OF 6 thru 80 COLUMNS IN INCREMENTS OF ONE.
i.e.: 6,7,8,9,.....79,80.
- ③ HOUSING MATERIAL: GLASS AND MINERAL FILLED HIGH TEMP. THERMOPLASTIC. FLAME RETARDANT PER UL94V-0. COLOR: BLACK.
PIN MATERIAL: PHOS BRONZE
- ④ CONTACT PLATING OPTIONS:
SEE PRODUCT NUMBER TABLE
- ⑤ $\phi.0453/1.151$ DRILLED HOLE PLATED WITH $.0003/.007$ MIN. SnPb OVER $.001/.03$ to $.003/.08$ Cu. PLATING TO ACHIEVE A $\phi.040 \pm .003/1.02 \pm .08$ HOLE.
- ⑥ TO ASSURE PROPER INSTALLATION: TOOLING, AS SPECIFIED IN INSTRUCTION MANUAL 155915-001 MUST BE USED. PIN MATING LENGTH WILL BE $\pm .002/.05$ AFTER INSTALLATION.
- ⑦ COMPANY NAME, PART NUMBER AND LOT CODE TO APPEAR ON THIS SURFACE PER BUS-12-108.
- ⑧ DIM "A" CALCULATION = $.100[2.54] \times \text{NO. OF COLUMNS} + .75[19.1]$
- ⑨ DIM "B" CALCULATION = $.100[2.54] \times \text{NO. OF COLUMNS} + .450[11.43]$
- ⑩ DIM "C" CALCULATION = $.100[2.54] \times \text{NO. OF COLUMNS} - .100[2.54]$
- 11. ALL POSITIONS ARE LOADED EXCEPT FOR -XXYYY ASSEMBLIES WHICH HAVE SELECTIVE LOADING.
- ⑫ REFERENCE 50807 FOR F.M.L.B. AVAILABLE OPTIONS AND WORKSHEET.
- 13. THIS PRODUCT (WITH 'LF' SUFFIX) MEETS EUROPEAN UNION DIRECTIVES AND OTHER COUNTRY REGULATIONS AS DESCRIBED IN GS-22-008.
- 14. THIS HOUSING WILL WITHSTAND EXPOSURE TO 260°C PEAK TEMPERATURE FOR 10-30 SECONDS IN A CONVECTION, INFRA-RED OR VAPOR PHASE REFLOW OVEN.



RECOMMENDED PCB LAYOUT
(ALL HOLES LOCATED ON .100/2.54 GRID UNLESS OTHERWISE SPECIFIED)

| | | | | | |
|---------------------------|----------------|---------------------|----------------------------------|---|---|
| mat'l. code SEE NOTE 3 | | surface ISO 1302 | tolerance ISO 406 ISO 1101 | projection | product family HPC |
| ltr | ecn no | dr | date | tolerances unless otherwise specified | title |
| P | | | | angles linear .XX±.01/.3 .XXX±.005/.13 .XXXX±.0020/.051 | 3 ROW VERTICAL HEADER W/PRESS-FIT PINS, 0 G.P. |
| | | | | 0°±2' | INCH/MM |
| | | | | dr D.SHEAFER 1991-03-14 | scale 1:1 |
| | | | | enr S.CLARK 1991-03-14 | FCJ |
| | | | | chr S ALOSIOUS 2011-05-23 | dwg no 50006 sheet 2 of 16 size A3 |
| | | | | appd BIJU K PAUL 2011-05-23 | type Product Customer Drawing |
| sheet index | revision sheet | | | | |

FCJ
FCconnect.com
Copyright FCJ

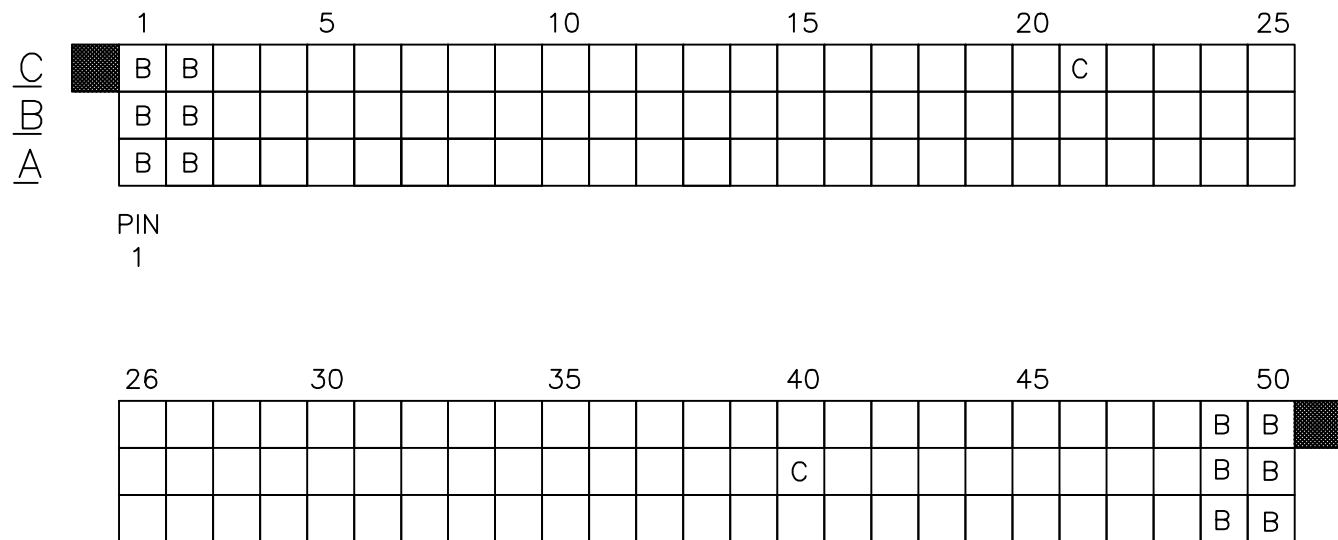
| PRODUCT NO. | NUMBER OF POSITIONS NOTE 2 | TAIL LENGTH ±.015/0.38 | CONTACT PLATING |
|---------------|-------------------------------|---------------------------|--------------------|
| 50006-1YYYA | YYY | .177/4.50 | 30u"/.76u GOLD |
| 50006-1YYC | YYY | .533/13.54 | 30u"/.76u GOLD |
| 50006-1YYD | YYY | .733/18.62 | 30u"/.76u GOLD |
| 50006-1YYG | YYY | .250/6.35 | 30u"/.76u GOLD |
| 50006-1YYL | YYY | .188/4.78 | 30u"/.76u GOLD |
| 50006-1YYP | YYY | .470/11.94 | 30u"/.76u GOLD |
| 50006-3YYA | YYY | .177/4.50 | 50u"/1.27u GOLD |
| 50006-3YYC | YYY | .533/13.54 | 50u"/1.27u GOLD |
| 50006-3YYD | YYY | .733/18.62 | 50u"/1.27u GOLD |
| 50006-3YYG | YYY | .250/6.35 | 50u"/1.27u GOLD |
| 50006-3YYL | YYY | .188/4.78 | 50u"/1.27u GOLD |
| 50006-3YYP | YYY | .470/11.94 | 50u"/1.27u GOLD |
| 50006-5YYA | YYY | .177/4.50 | 30u"/.76u GXT |
| 50006-5YYALF | YYY | .177/4.50 | 30u"/.76u GXT |
| 50006-5YYC | YYY | .533/13.54 | 30u"/.76u GXT |
| 50006-5YYCLF | YYY | .533/13.54 | 30u"/.76u GXT |
| 50006-5YYD | YYY | .733/18.62 | 30u"/.76u GXT |
| 50006-5YYDLF | YYY | .733/18.62 | 30u"/.76u GXT |
| 50006-5YYG | YYY | .250/6.35 | 30u"/.76u GXT |
| 50006-5YYGLF | YYY | .250/6.35 | 30u"/.76u GXT |
| 50006-5YYL | YYY | .188/4.78 | 30u"/.76u GXT |
| 50006-5YYLLF | YYY | .188/4.78 | 30u"/.76u GXT |
| 50006-5YYP | YYY | .470/11.94 | 30u"/.76u GXT |
| 50006-5YYPLF | YYY | .470/11.94 | 30u"/.76u GXT |
| 50006-XX010 | 150 | SEE SHEET 4 | 30u"/.76u GXT |
| 50006-XX010LF | 150 | SEE SHEET 4 | 30u"/.76u GXT |
| 50006-XX025 | 18 | SEE SHEET 5 | 30u"/.76u GXT |
| 50006-XX025LF | 18 | SEE SHEET 5 | 30u"/.76u GXT |
| 50006-XX027 | 96 | SEE SHEET 6 | 30u"/.76u GOLD |
| 50006-XX027LF | 96 | SEE SHEET 6 | 30u"/.76u GXT |
| 50006-XX028 | 30 | SEE SHEET 7 | 30u"/.76u GOLD |
| 50006-XX028LF | 30 | SEE SHEET 7 | 30u"/.76u GXT |
| 50006-XX045 | 180 | SEE SHEET 8 | 30u"/.76u GXT |
| 50006-XX045LF | 180 | SEE SHEET 8 | 30u"/.76u GXT |
| 50006-XX049 | 96 | SEE SHEET 9 | 30u"/.76u GOLD |
| 50006-XX049LF | 96 | SEE SHEET 9 | 30u"/.76u GXT |
| 50006-XX053 | 150 | SEE SHEET 10 | 30u"/.76u GXT |
| 50006-XX053LF | 150 | SEE SHEET 10 | 30u"/.76u GXT |
| 50006-XX054 | 150 | SEE SHEET 11 | 30u"/.76u GOLD |
| 50006-XX054LF | 150 | SEE SHEET 11 | 30u"/.76u GXT |
| 50006-XX055 | 30 | SEE SHEET 12 | 30u"/.76u GOLD |
| 50006-XX055LF | 30 | SEE SHEET 12 | 30u"/.76u GXT |
| 50006-XX056 | 150 | SEE SHEET 13 | 30u"/.76u GOLD |
| 50006-XX056LF | 150 | SEE SHEET 13 | 30u"/.76u GXT |
| 50006-XX057 | 150 | SEE SHEET 14 | 30u"/.76u GOLD |
| 50006-XX057LF | 150 | SEE SHEET 14 | 30u"/.76u GXT |
| 50006-XX058 | 240 | SEE SHEET 15 | 50u"/1.27u GOLD |
| 50006-XX058LF | 240 | SEE SHEET 15 | 50u"/1.27u GXT |
| 50006-XX059 | 240 | SEE SHEET 16 | 50u"/1.27u GOLD |
| 50006-XX059LF | 240 | SEE SHEET 16 | 50u"/1.27u GXT |

| | | | | | |
|---------------------------|----------------|-----------------------|----------------------------------|---------------------------------------|-------------------------------|
| mat'l. code SEE NOTE 3 | | surface ISO 1302 ✓ | tolerance ISO 406 ISO 1101 | projection | product family HPC |
| ltr | ecn no | dr | date | tolerances unless otherwise specified | title |
| P | | | | angles linear .XX±.01/.3 | 3 ROW VERTICAL HEADER |
| | | | | 0°±2' | W/PRESS-FIT PINS, 0 G.P. |
| | | | | dr D.SHEAFER 1991-03-14 | dwg no sheet 3 of 16 size |
| | | | | enr S.CLARK 1991-03-14 | 50006 A3 |
| | | | | chr S ALOSIOUS 2011-05-23 | type Product Customer Drawing |
| | | | | appd BIJU K PAUL 2011-05-23 | |
| sheet index | revision sheet | | | | |

FCJ
 FClconnect.com
 Copyright FCJ

| |
|----------------|
| PRODUCT NUMBER |
| 50006-XX010 |
| 50006-XX010LF |

FOR PRODUCT NUMBERS 50006-XX010 AND 50006-XX010LF ONLY



PIN
1

NOTES FOR 50006-XX010 AND 50006-XX010LF ONLY:

- ALL POSITIONS ARE LOADED WITH "A" EXCEPT AS SHOWN.
- COLUMN 1, ROW A IS DESIGNATED AS SIGNAL PIN 1, AS VIEWED FROM THE MATING FACE.
- SIGNAL DATA FOR 50006-XX010 AND 50006-XX010LF:
SIZE 3 x 50
TOTAL NO. OF POSITIONS - 150
NO. OF POSITIONS LOADED - 150

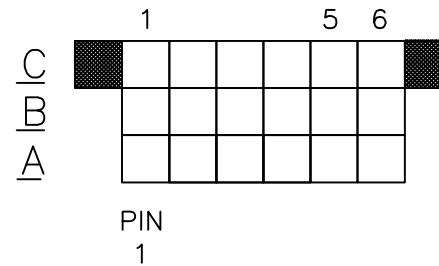
| ITEM KEY | QTY. | MATING LENGTH | TAIL LENGTH |
|----------|------|---------------|--------------|
| A | 136 | .200 / 5.08 | .177 / 4.50 |
| B | 12 | .200 / 5.08 | .533 / 13.54 |
| C | 2 | .240 / 6.10 | .177 / 4.50 |

| | | | | | | | | | |
|-------------|----------------|-----------------------|-------------|---------------------------------------|--------|------------------|--|--|--|
| mat'l. code | | surface ISO 1302 ✓ | | tolerance ISO 406 ISO 1101 | | projection | | product family HPC | |
| ltr | ecn no | dr | date | tolerances unless otherwise specified | | INCH/MM | | title 3 ROW VERTICAL HEADER W/PRESS-FIT PINS, 0 G.P. | |
| P | | | | angles | linear | .XX±.01/.3 | | dwg no | |
| | | | | 0°±2' | | .XXX±.005/.13 | | sheet 4 of 16 size | |
| | | | | | | .XXXX±.0020/.051 | | 50006 A3 | |
| | | dr | D.SHEAFER | 1991-03-14 | | scale 1:1 | | type Product Customer Drawing | |
| | | enr | S.CLARK | 1991-03-14 | | | | | |
| | | chr | S ALOSIUS | 2011-05-23 | | | | | |
| | | appd | BIJU K PAUL | 2011-05-23 | | | | | |
| sheet index | revision sheet | | | | | | | | |

form: A3

| |
|----------------|
| PRODUCT NUMBER |
| 50006-XX025 |
| 50006-XX025LF |

FOR PRODUCT NUMBERS 50006-XX025 AND 50006-XX025LF ONLY



CUSTOMER NOTE: END GUIDE PINS ARE SUGGESTED IN YOUR APPLICATION TO PREVENT STUBBING OF THE .260/6.60 MATING LENGTH SIGNAL PINS.

NOTES FOR 50006-XX025 AND 50006-XX025LF ONLY:

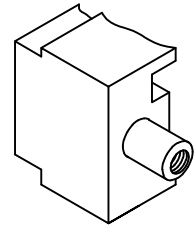
- ALL POSITIONS ARE LOADED WITH "A" .
- COLUMN 1, ROW A IS DESIGNATED AS SIGNAL PIN 1, AS VIEWED FROM THE MATING FACE.
- SIGNAL DATA FOR 50006-XX025 AND 50006-XX025LF:
SIZE 3 x 6
TOTAL NO. OF POSITIONS - 18
NO. OF POSITIONS LOADED - 18

| ITEM KEY | QTY. | MATING LENGTH | TAIL LENGTH |
|----------|------|---------------|--------------|
| A | 18 | .260 / 6.60 | .533 / 13.54 |

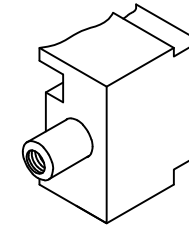
| | | | | | | | | | |
|-------------|----------------|-----------------------|-------------|---------------------------------------|--------|------------------|-----|--------------------------|-------------------------------|
| mat'l. code | | surface ISO 1302 ✓ | | tolerance ISO 406 ISO 1101 | | projection | | product family HPC | |
| ltr | ecn no | dr | date | tolerances unless otherwise specified | | INCH/MM | | title | |
| P | | | | angles | linear | .XX±.01/.3 | | 3 ROW VERTICAL HEADER | |
| | | | | 0°±2° | | .XXX±.005/.13 | | W/PRESS-FIT PINS, 0 G.P. | |
| | | | | | | .XXXX±.0020/.051 | | scale 1:1 | |
| | | dr | D.SHEAFER | 1991-03-14 | | | FCJ | | dwg no |
| | | enr | S.CLARK | 1991-03-14 | | | | | sheet 5 of 16 |
| | | chr | S ALOSIOUS | 2011-05-23 | | | | | 50006 |
| | | appd | BIJU K PAUL | 2011-05-23 | | | | | A3 |
| sheet index | revision sheet | | | | | | | | type Product Customer Drawing |

form: A3

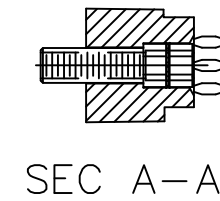
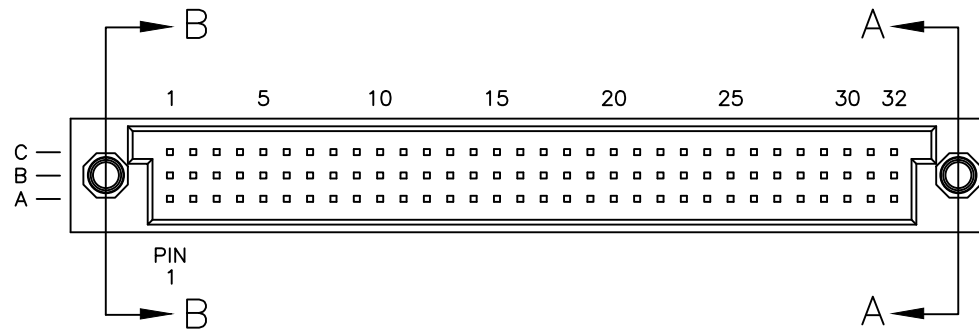
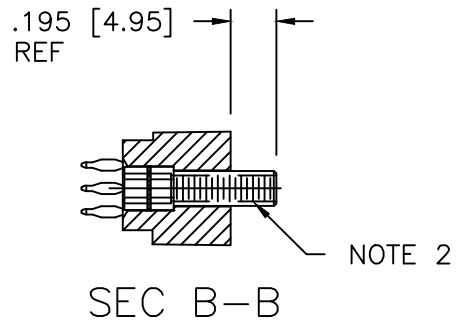
| |
|----------------|
| PRODUCT NUMBER |
| 50006-XX027 |
| 50006-XX027LF |



L.E.



R.E.



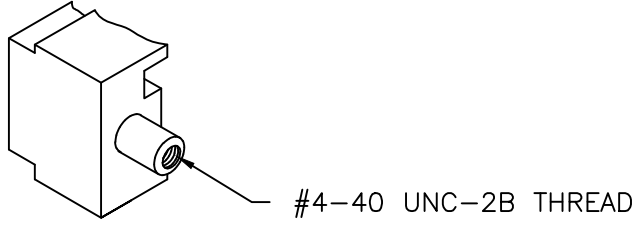
FOR PRODUCT NUMBERS 50006-XX027 AND 50006-XX027LF

NOTES:

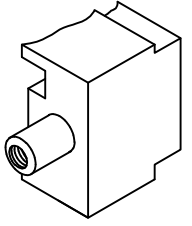
1. IDENTICAL TO P/N 50006-1096A EXCEPT AS SHOWN W/JACK SCREW INSERTS INSTALLED ON BOTH ENDS.
2. HARDWARE P/N 95729-001.

| | | | | | |
|-------------|----------------|---------------------|----------------------------------|--|---|
| mat'l. code | | surface ISO 1302 | tolerance ISO 406 ISO 1101 | projection | product family HPC |
| ltr | ecn no | dr | date | tolerances unless otherwise specified | title |
| P | | | | angles linear .XX±.01/.3 .XXX±.005/.13 .XXXX±.0020/.051 | 3 ROW VERTICAL HEADER W/PRESS-FIT PINS, 0 G.P. |
| | | | | 0°±2° | INCH/MM |
| | | | | dr D.SHEAFER 1991-03-14 | scale 1:1 |
| | | | | enr S.CLARK 1991-03-14 | FCJ |
| | | | | chr S ALOSIOUS 2011-05-23 | dwg no 50006 sheet 6 of 16 size A3 |
| | | | | appd BIJU K PAUL 2011-05-23 | type Product Customer Drawing |
| sheet index | revision sheet | | | | |

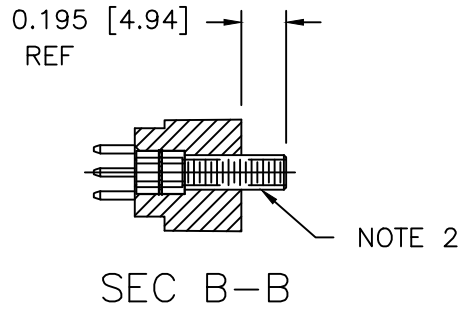
| |
|----------------|
| PRODUCT NUMBER |
| 50006-XX028 |
| 50006-XX028LF |



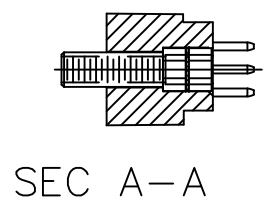
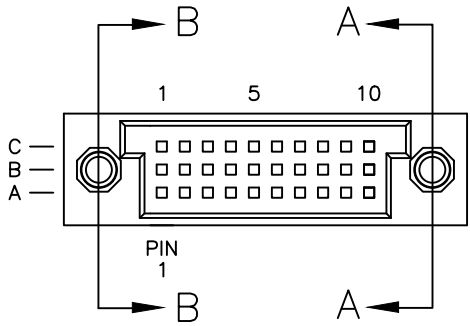
L.E.



R.E.



SEC B-B



SEC A-A

FOR PRODUCT NUMBERS 50006-XX028 AND 50006-XX028LF

NOTES:

1. IDENTICAL TO P/N 50006-1030A EXCEPT AS SHOWN W/JACK SCREW INSERTS INSTALLED ON BOTH ENDS.
2. HARDWARE P/N 95729-001.

FCJ
 FCconnect.com
 Copyright FCJ

| | | | | | | | | | |
|-------------|----------------|---------------------|-------------|---------------------------------------|--------|---|--|--|--|
| mat'l. code | | surface ISO 1302 | | tolerance ISO 406 ISO 1101 | | projection | | product family HPC | |
| ltr | ecn no | dr | date | tolerances unless otherwise specified | | INCH/MM | | title 3 ROW VERTICAL HEADER W/PRESS-FIT PINS, 0 G.P. | |
| P | | | | angles | linear | .XX±.01/.3 .XXX±.005/.13 .XXXX±.0020/.051 | | dwg no 50006 | |
| | | | | 0°±2° | | scale 1:1 | | sheet 7 of 16 size A3 | |
| | | dr | D.SHEAFER | 1991-03-14 | | | | type Product Customer Drawing | |
| | | enr | S.CLARK | 1991-03-14 | | | | | |
| | | chr | S ALOSIOUS | 2011-05-23 | | | | | |
| | | appd | BIJU K PAUL | 2011-05-23 | | | | | |
| sheet index | revision sheet | | | | | | | | |

form: A3

| |
|----------------|
| PRODUCT NUMBER |
| 50006-XX045 |
| 50006-XX045LF |

FOR PRODUCT NUMBERS 50006-XX045 AND 50006-XX045LF ONLY

| | | | | | | | |
|---|---|---|----|----|----|----|----|
| | 1 | 5 | 10 | 15 | 20 | 25 | 30 |
| C | ■ | | | | | | |
| B | | | | | | | |
| A | | | | | | | |

PIN

1

| | | | | | | | | |
|--|----|----|----|----|----|----|----|---|
| | 31 | 35 | 40 | 45 | 50 | 55 | 60 | ■ |
| | | | | | | | | |
| | | | | | | | | |

NOTES FOR 50006-XX045 AND 50006-XX045LF ONLY:

- ALL POSITIONS ARE LOADED WITH "A".
- COLUMN 1, ROW A IS DESIGNATED AS SIGNAL PIN 1, AS VIEWED FROM THE MATING FACE.
- SIGNAL DATA FOR 50006-XX045 AND 50006-XX045LF:
SIZE 3 x 60
TOTAL NO. OF POSITIONS - 180
NO. OF POSITIONS LOADED - 180

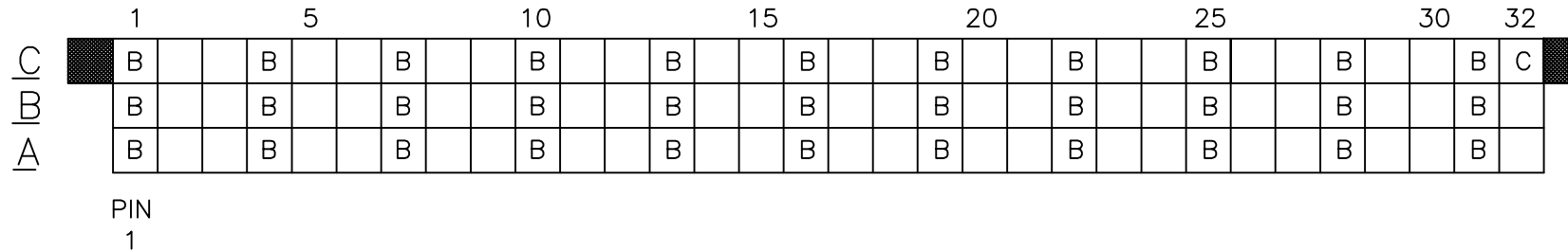
| ITEM KEY | QTY. | MATING LENGTH | TAIL LENGTH |
|----------|------|---------------|--------------|
| A | 180 | .220 - 5.59 | .597 - 15.16 |

| | | | | | |
|-------------|----------------|---------------------|----------------------------------|--|---|
| mat'l. code | | surface ISO 1302 | tolerance ISO 406 ISO 1101 | projection | product family HPC |
| ltr | ecn no | dr | date | tolerances unless otherwise specified | title |
| P | | | | angles linear .XX±.01/.3 .XXX±.005/.13 .XXXX±.0020/.051 | 3 ROW VERTICAL HEADER W/PRESS-FIT PINS, 0 G.P. |
| | | | | 0°±2' | INCH/MM scale 1:1 |
| | | dr | D.SHEAFER | 1991-03-14 | dwg no |
| | | enr | S.CLARK | 1991-03-14 | sheet 8 of 16 |
| | | chr | S ALOSIOUS | 2011-05-23 | 50006 |
| | | appd | BIJU K PAUL | 2011-05-23 | A3 |
| sheet index | revision sheet | | | | type Product Customer Drawing |

form: A3

| |
|----------------|
| PRODUCT NUMBER |
| 50006-XX049 |
| 50006-XX049LF |

FOR PRODUCT NUMBER 50006-XX049 AND 50006-XX049LF ONLY



CUSTOMER NOTE: END GUIDE PINS ARE SUGGESTED IN YOUR APPLICATION TO PREVENT STUBBING OF THE .260/6.60 MATING LENGTH SIGNAL PINS.

NOTES FOR 50006-XX049 AND 50006-XX049LF ONLY:

- ALL POSITIONS ARE LOADED WITH "A" EXCEPT AS SHOWN.
- COLUMN 1, ROW A IS DESIGNATED AS SIGNAL PIN 1, AS VIEWED FROM THE MATING FACE.
- SIGNAL DATA FOR 50006-XX049 AND 50006-XX049LF:
 SIZE 3 x 32
 TOTAL NO. OF POSITIONS - 96
 NO. OF POSITIONS LOADED - 96

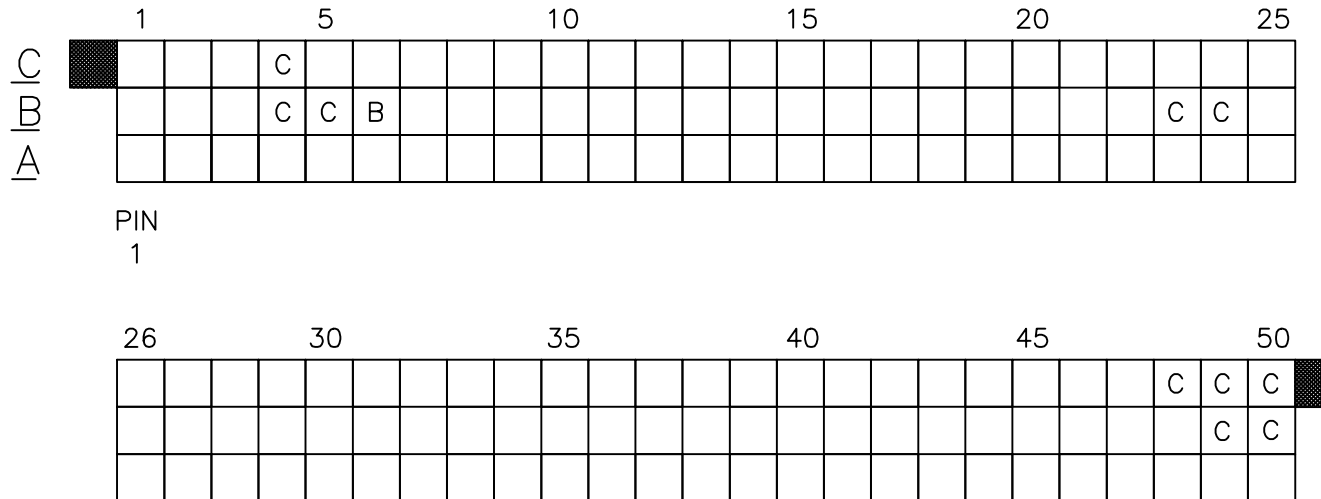
| ITEM KEY | QTY. | MATING LENGTH | TAIL LENGTH |
|----------|------|---------------|-------------|
| A | 62 | .220 / 5.59 | .177 / 4.50 |
| B | 33 | .260 / 6.60 | .177 / 4.50 |
| C | 1 | .180 / 4.57 | .177 / 4.50 |

| | | | | | |
|-------------|----------------|---------------------|----------------------------------|---|---|
| mat'l. code | | surface ISO 1302 | tolerance ISO 406 ISO 1101 | projection | product family HPC |
| ltr | ecn no | dr | date | tolerances unless otherwise specified | title |
| P | | | | angles linear 0°±2' | 3 ROW VERTICAL HEADER W/PRESS-FIT PINS, 0 G.P. |
| | | | | .XX±.01/.3 .XXX±.005/.13 .XXXX±.0020/.051 | INCH/MM scale 1:1 |
| | | dr | D.SHEAFER | 1991-03-14 | dwg no |
| | | enr | S.CLARK | 1991-03-14 | sheet 9 of 16 |
| | | chr | S ALOSIUS | 2011-05-23 | 50006 |
| | | appd | BIJU K PAUL | 2011-05-23 | A3 |
| sheet index | revision sheet | | | | type Product Customer Drawing |

Copyright FCJ
FCJ
FCconnect.com

| |
|----------------|
| PRODUCT NUMBER |
| 50006-XX053 |
| 50006-XX053LF |

FOR PRODUCT NUMBERS 50006-XX053 AND 50006-XX053LF ONLY



CUSTOMER NOTE: END GUIDE PINS ARE SUGGESTED IN YOUR APPLICATION TO PREVENT STUBBING OF THE .260 MATING LENGTH SIGNAL PINS.

- ALL POSITIONS ARE LOADED WITH "A" EXCEPT AS SHOWN.
- COLUMN 1, ROW A IS DESIGNATED AS SIGNAL PIN 1, AS VIEWED FROM THE MATING FACE.
- SIGNAL DATA FOR 50006-XX053 AND 50006-XX053LF:
 SIZE 3 x 50
 TOTAL NO. OF POSITIONS - 150
 NO. OF POSITIONS LOADED - 150

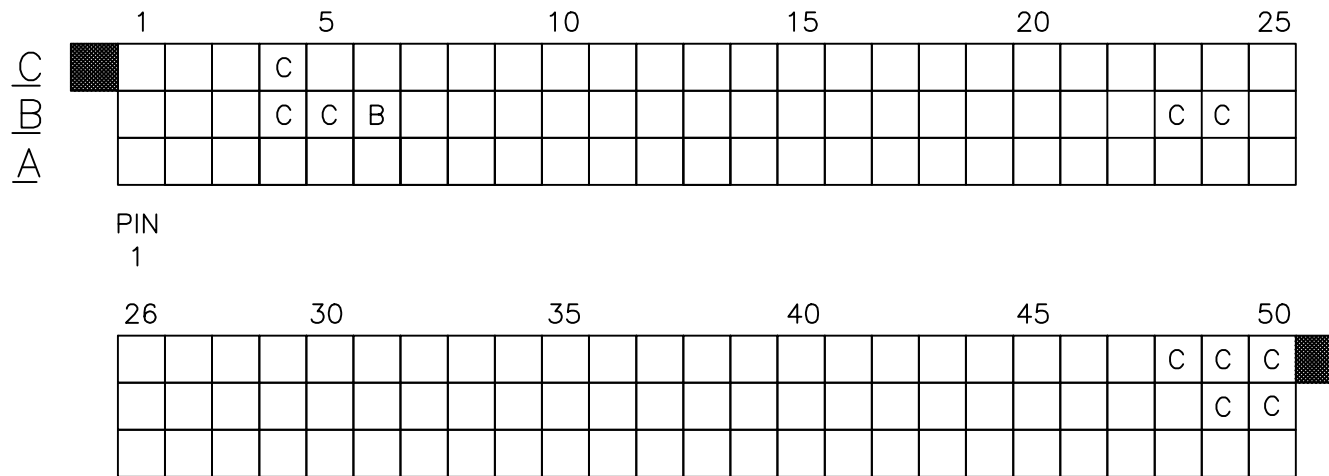
| ITEM KEY | QTY. | MATING LENGTH | TAIL LENGTH |
|----------|------|---------------|-------------|
| A | 139 | .220 / 5.59 | .250 / 6.35 |
| B | 1 | .180 / 4.57 | .250 / 6.35 |
| C | 10 | .260 / 6.60 | .250 / 6.35 |

| | | | | | | | | | |
|-------------|----------------|---------------------|-------------|---------------------------------------|--------|------------------|--|--|--|
| mat'l. code | | surface ISO 1302 | | tolerance ISO 406 ISO 1101 | | projection | | product family HPC | |
| ltr | ecn no | dr | date | tolerances unless otherwise specified | | INCH/MM | | title 3 ROW VERTICAL HEADER W/PRESS-FIT PINS, 0 G.P. | |
| P | | | | angles | linear | .XX±.01/.3 | | dwg no | |
| | | | | 0°±2° | | .XXX±.005/.13 | | sheet 10 of 16 size | |
| | | | | | | .XXXX±.0020/.051 | | 50006 A3 | |
| | | dr | D.SHEAFER | 1991-03-14 | | scale 1:1 | | type Product Customer Drawing | |
| | | enr | S.CLARK | 1991-03-14 | | | | | |
| | | chr | S ALOSIOUS | 2011-05-23 | | | | | |
| | | appd | BIJU K PAUL | 2011-05-23 | | | | | |
| sheet index | revision sheet | | | | | | | | |

form: A3

| |
|----------------|
| PRODUCT NUMBER |
| 50006-XX054 |
| 50006-XX054LF |

FOR PRODUCT NUMBERS 50006-XX054 AND 50006-XX054LF ONLY



CUSTOMER NOTE: END GUIDE PINS ARE SUGGESTED IN YOUR APPLICATION TO PREVENT STUBBING OF THE .260 MATING LENGTH SIGNAL PINS.

NOTES FOR 50006-XX054 AND 50006-XX054LF ONLY:

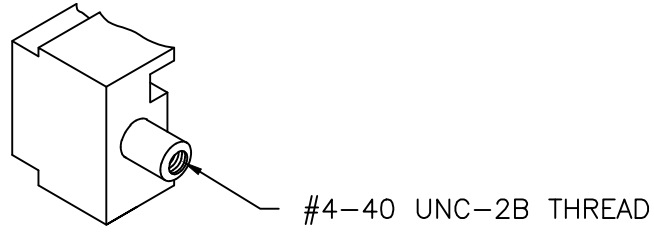
1. ALL POSITIONS ARE LOADED WITH "A" EXCEPT AS SHOWN.
2. COLUMN 1, ROW A IS DESIGNATED AS SIGNAL PIN 1, AS VIEWED FROM THE MATING FACE.
3. SIGNAL DATA FOR 50006-XX054 AND 50006-XX054LF:
 SIZE 3 x 50
 TOTAL NO. OF POSITIONS - 150
 NO. OF POSITIONS LOADED - 150

| ITEM KEY | QTY. | MATING LENGTH | TAIL LENGTH |
|----------|------|---------------|--------------|
| A | 139 | .220 / 5.59 | .561 / 14.25 |
| B | 1 | .180 / 4.57 | .521 / 13.23 |
| C | 10 | .260 / 6.60 | .601 / 15.27 |

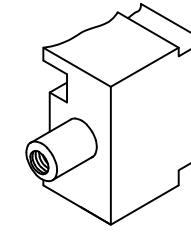
| | | | | | |
|-------------|----------------|---------------------|----------------------------------|---|---|
| mat'l. code | | surface ISO 1302 | tolerance ISO 406 ISO 1101 | projection | product family HPC |
| ltr | ecn no | dr | date | tolerances unless otherwise specified | title |
| P | | | | angles linear 0°±2' | 3 ROW VERTICAL HEADER W/PRESS-FIT PINS, 0 G.P. |
| | | | | .XX±.01/.3 .XXX±.005/.13 .XXXX±.0020/.051 | INCH/MM scale 1:1 |
| | | dr | D.SHEAFER | 1991-03-14 | dwg no |
| | | enr | S.CLARK | 1991-03-14 | sheet 11 of 16 size |
| | | chr | S ALOSIOUS | 2011-05-23 | 50006 A3 |
| | | appd | BIJU K PAUL | 2011-05-23 | type Product Customer Drawing |
| sheet index | revision sheet | | | | |

FCJ
 FCconnect.com
 Copyright FCJ

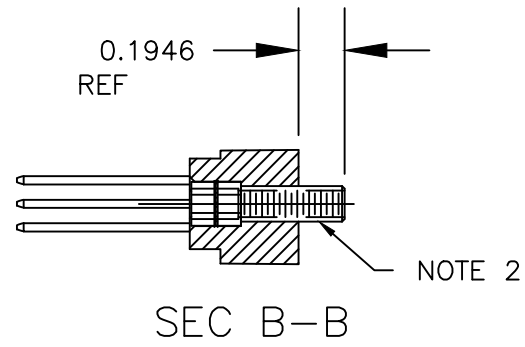
| |
|----------------|
| PRODUCT NUMBER |
| 50006-XX055 |
| 50006-XX055LF |



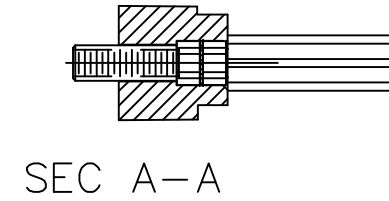
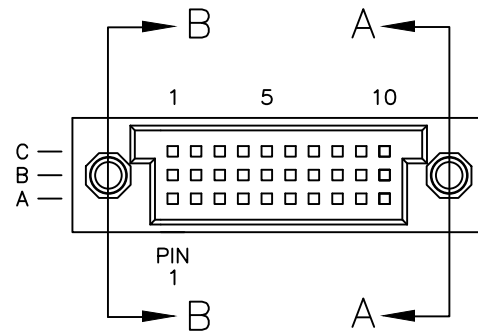
L.E.



R.E.



SEC B-B



SEC A-A

FOR PRODUCT NUMBERS 50006-XX055 AND 50006-XX055LF

NOTES:

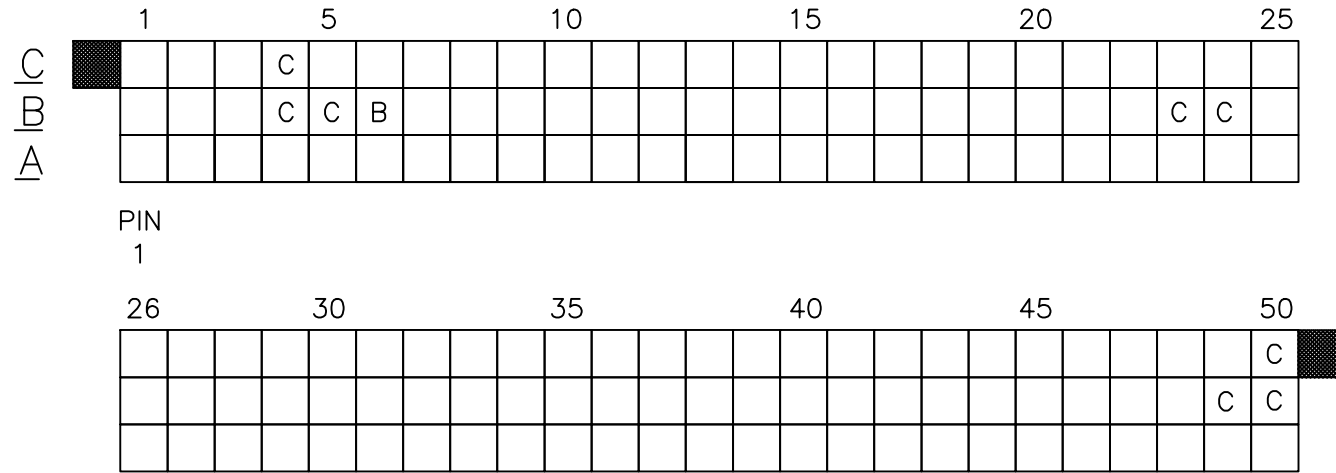
- IDENTICAL TO P/N 50006-1030D EXCEPT AS SHOWN W/JACK SCREW INSERTS INSTALLED ON BOTH ENDS.
- HARDWARE P/N 95729-001.

| | | | | | | | | | |
|-------------|----------------|---------------------|-------------|---------------------------------------|--------|------------------|--|--|--|
| mat'l. code | | surface ISO 1302 | | tolerance ISO 406 ISO 1101 | | projection | | product family HPC | |
| ltr | ecn no | dr | date | tolerances unless otherwise specified | | INCH/MM | | title 3 ROW VERTICAL HEADER W/PRESS-FIT PINS, 0 G.P. | |
| P | | | | angles | linear | .XX±.01/.3 | | dwg no | |
| | | | | 0°±2' | | .XXX±.005/.13 | | sheet 12 of 16 size | |
| | | | | | | .XXXX±.0020/.051 | | 50006 A3 | |
| | | dr | D.SHEAFER | 1991-03-14 | | scale 1:1 | | type Product Customer Drawing | |
| | | enr | S.CLARK | 1991-03-14 | | | | | |
| | | chr | S ALOSIOUS | 2011-05-23 | | | | | |
| | | appd | BIJU K PAUL | 2011-05-23 | | | | | |
| sheet index | revision sheet | | | | | | | | |

form: A3

| |
|----------------|
| PRODUCT NUMBER |
| 50006-XX056 |
| 50006-XX056LF |

FOR PRODUCT NUMBER 50006-XX056 AND 50006-XX056LF ONLY



CUSTOMER NOTE: END GUIDE PINS ARE SUGGESTED IN YOUR APPLICATION TO PREVENT STUBBING OF THE .260 MATING LENGTH SIGNAL PINS.

NOTES FOR 50006-XX056 AND 50006-XX056LF ONLY:

1. ALL POSITIONS ARE LOADED WITH "A" EXCEPT AS SHOWN.
2. COLUMN 1, ROW A IS DESIGNATED AS SIGNAL PIN 1, AS VIEWED FROM THE MATING FACE.
3. SIGNAL DATA FOR 50006-XX056 AND 50006-XX056LF:
 SIZE 3 x 50
 TOTAL NO. OF POSITIONS - 150
 NO. OF POSITIONS LOADED - 150

| ITEM KEY | QTY. | MATING LENGTH | TAIL LENGTH |
|----------|------|---------------|-------------|
| A | 141 | .220 / 5.59 | .177 / 4.50 |
| B | 1 | .180 / 4.57 | .177 / 4.50 |
| C | 8 | .260 / 6.60 | .177 / 4.50 |

| | | | | | |
|-------------|----------------|---------------------|----------------------------------|---|---|
| mat'l. code | | surface ISO 1302 | tolerance ISO 406 ISO 1101 | projection | product family HPC |
| ltr | ecn no | dr | date | tolerances unless otherwise specified | title |
| P | | | | angles linear 0°±2' | 3 ROW VERTICAL HEADER W/PRESS-FIT PINS, 0 G.P. |
| | | | | .XX±.01/.3 .XXX±.005/.13 .XXXX±.0020/.051 | INCH/MM scale 1:1 |
| | | dr | D.SHEAFER | 1991-03-14 | dwg no |
| | | enr | S.CLARK | 1991-03-14 | sheet 13 of 16 size |
| | | chr | S ALOSIOUS | 2011-05-23 | 50006 A3 |
| | | appd | BIJU K PAUL | 2011-05-23 | type Product Customer Drawing |
| sheet index | revision sheet | | | | |

FCJ
 FCconnect.com
 Copyright FCJ

| |
|----------------|
| PRODUCT NUMBER |
| 50006-XX058 |
| 50006-XX058LF |

FOR PRODUCT NUMBER 50006-XX058 AND 50006-XX058LF

| | | | | | | | | | | |
|-----|----|----|----|----|----|----|----|----|----|-----|
| | 1 | 5 | 10 | 15 | 20 | 25 | 30 | 35 | 40 | |
| C | B | B | | | | | | | | |
| B | B | B | | | | | | | | |
| A | B | B | | | | | | | | |
| PIN | | | | | | | | | | |
| 1 | | | | | | | | | | |
| | 41 | 45 | 50 | 55 | 60 | 65 | 70 | 75 | 80 | |
| | | | | | | | | | | B B |
| | | | | | | | | | | B B |
| | | | | | | | | | | B B |

CUSTOMER NOTE: END GUIDE PINS ARE SUGGESTED IN YOUR APPLICATION TO PREVENT STUBBING OF THE .260 MATING LENGTH SIGNAL PINS.

NOTES FOR 50006-XX058 AND 50006-XX058LF ONLY:

- ALL POSITIONS ARE LOADED WITH "A" EXCEPT AS SHOWN.
- COLUMN 1, ROW A IS DESIGNATED AS SIGNAL PIN 1, AS VIEWED FROM THE MATING FACE.
- SIGNAL DATA FOR 50006-XX058 AND 50006-XX058LF:
 SIZE 3 x 80
 TOTAL NO. OF POSITIONS - 240
 NO. OF POSITIONS LOADED - 240

| ITEM KEY | QTY. | MATING LENGTH | TAIL LENGTH |
|----------|------|---------------|--------------|
| A | 228 | .210 / 5.33 | .533 / 13.54 |
| B | 12 | .244 / 6.20 | .533 / 13.54 |

| | | | | | |
|-------------|----------------|------------|--|---|-------------------------------|
| mat'l. code | | surface | tolerance | projection | product family |
| | | ISO 1302 ✓ | ISO 406 ISO 1101 | | HPC |
| ltr | ecn no | dr | date | title | |
| P | | | | 3 ROW VERTICAL HEADER W/PRESS-FIT PINS, 0 G.P. | |
| | | angles | linear | INCH/MM | |
| | | 0°±2' | .XX±.01/.3 .XXX±.005/.13 .XXX±.0020/.051 | scale 1:1 | |
| | | dr | S. ALOSIOUS | 2011-05-23 | dwg no |
| | | engr | S. ALOSIOUS | 2011-05-23 | sheet 15 of 16 size |
| | | chr | S. ALOSIOUS | 2011-05-23 | 50006 A3 |
| | | appd | BIJU K PAUL | 2011-05-23 | type Product Customer Drawing |
| sheet index | revision sheet | | | | |



Copyright FCI

