



Chipsmall Limited consists of a professional team with an average of over 10 year of expertise in the distribution of electronic components. Based in Hongkong, we have already established firm and mutual-benefit business relationships with customers from,Europe,America and south Asia,supplying obsolete and hard-to-find components to meet their specific needs.

With the principle of “Quality Parts,Customers Priority,Honest Operation,and Considerate Service”,our business mainly focus on the distribution of electronic components. Line cards we deal with include Microchip,ALPS,ROHM,Xilinx,Pulse,ON,Everlight and Freescale. Main products comprise IC,Modules,Potentiometer,IC Socket,Relay,Connector.Our parts cover such applications as commercial,industrial, and automotives areas.

We are looking forward to setting up business relationship with you and hope to provide you with the best service and solution. Let us make a better world for our industry!



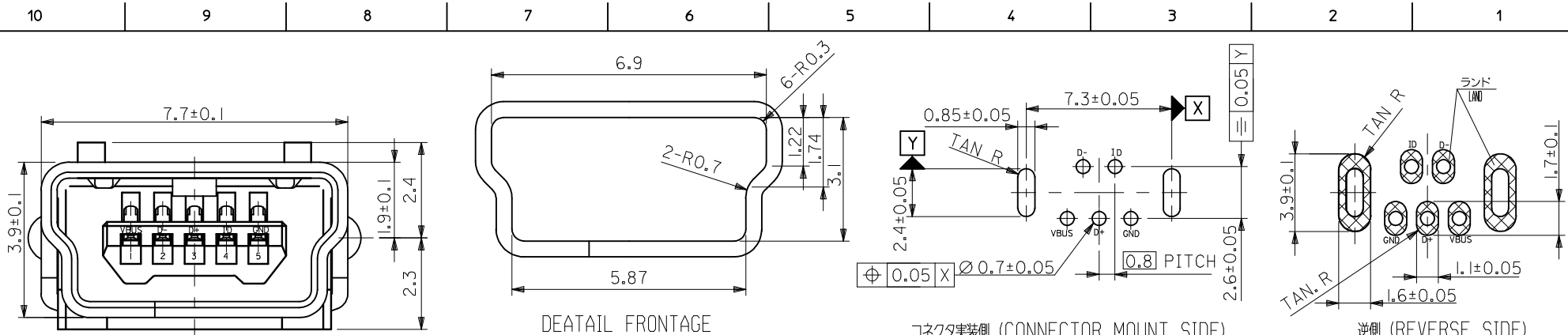
## Contact us

Tel: +86-755-8981 8866 Fax: +86-755-8427 6832

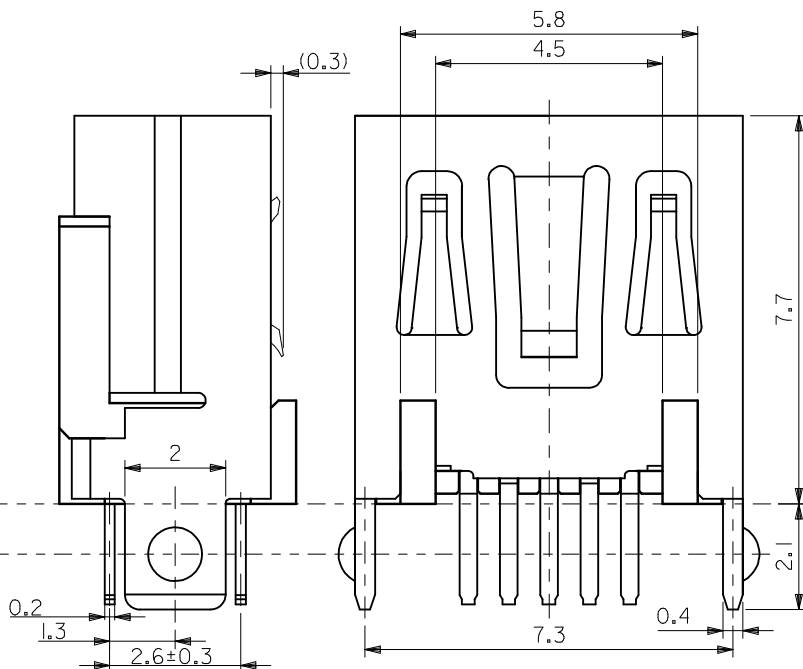
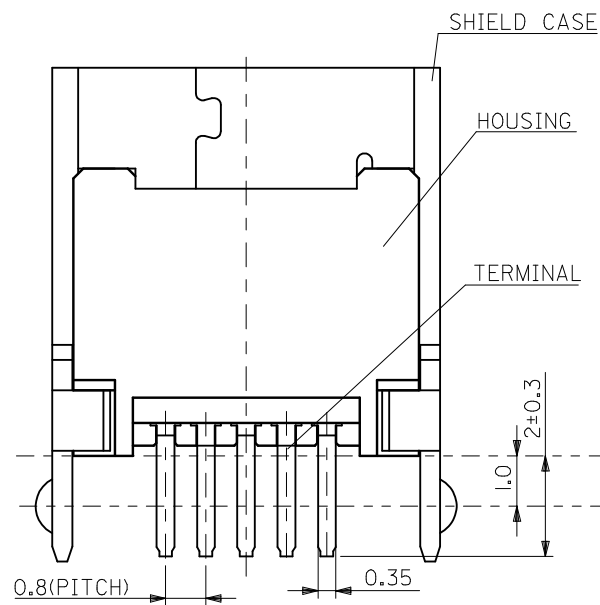
Email & Skype: [info@chipsmall.com](mailto:info@chipsmall.com) Web: [www.chipsmall.com](http://www.chipsmall.com)

Address: A1208, Overseas Decoration Building, #122 Zhenhua RD., Futian, Shenzhen, China





推奨基板寸法  
RECOMMENDED P.C.B. PATTERN LAYOUT



- 注記  
NOTES
- 材質  
MATERIAL  
ハウジング: ポリアミド, 黒色, UL 94V-0  
HOUSING: POLYAMIDE, BLACK, UL 94V-0  
ターミナル: 銅合金 (t=0.2)  
TERMINAL: COPPER ALLOY (t=0.2)  
シールド ケース: 銅合金 (t=0.4)  
SHIELD CASE: COPPER ALLOY (t=0.4)
  - メッキ仕様  
PLATING  
ターミナル  
TERMINAL  
接点部: 金メッキ  
CONTACT AREA: GOLD  
半田付け部: 錫メッキ  
SOLDER TAIL AREA: TIN  
下地部: ニッケルメッキ  
UNDER PLATING: NICKEL  
シールド ケース  
SHIELD CASE  
錫メッキ  
TIN  
下地部: ニッケルメッキ  
UNDER PLATING: NICKEL
  - 本製品は 500075-0519 の鉛フリー品である。  
THIS PRODUCT IS LEAD FREE OF 500075-0519.

500075-0517  
TRAY PACKAGE  
ORDER No.

REVISED EC NO: J2009-1533 DRAWN: SATO CHKD: MATSUMOTO APPR: NUKITA 2009/06/25 2009/06/25 2009/06/25	DESCRIPTION	GENERAL TOLERANCES (UNLESS SPECIFIED)		DIMENSION STYLE		SCALE	DESIGN UNITS	THIRD ANGLE PROJECTION			
				MM ONLY		10:1	METRIC				
		10 UNDER	±0.2	DRAWN BY H. KAWABATA	DATE 2004/03/30	TITLE MINI-B STRAIGHT TYPE 2 REC. ASS'Y -LEAD FREE-					
		10 OVER 30 UNDER	±0.25	CHECKED BY K. TOJO	DATE 2004/03/30						
		30 OVER	±0.3	APPROVED BY M. SASAO	DATE 2004/03/30	MOLEX INCORPORATED					
	ANGULAR ±3 °		MATERIAL NO.		DOCUMENT NO.		SHEET NO.				
	DRAFT WHERE APPLICABLE MUST REMAIN WITHIN DIMENSIONS		SEE TABLE		SD-500075-007		1 OF 1				
A	REV			SIZE A3	THIS DRAWING CONTAINS INFORMATION THAT IS PROPRIETARY TO MOLEX INCORPORATED AND SHOULD NOT BE USED WITHOUT WRITTEN PERMISSION						