



Chipsmall Limited consists of a professional team with an average of over 10 year of expertise in the distribution of electronic components. Based in Hongkong, we have already established firm and mutual-benefit business relationships with customers from,Europe,America and south Asia,supplying obsolete and hard-to-find components to meet their specific needs.

With the principle of “Quality Parts,Customers Priority,Honest Operation,and Considerate Service”,our business mainly focus on the distribution of electronic components. Line cards we deal with include Microchip,ALPS,ROHM,Xilinx,Pulse,ON,Everlight and Freescale. Main products comprise IC,Modules,Potentiometer,IC Socket,Relay,Connector.Our parts cover such applications as commercial,industrial, and automotives areas.

We are looking forward to setting up business relationship with you and hope to provide you with the best service and solution. Let us make a better world for our industry!



Contact us

Tel: +86-755-8981 8866 Fax: +86-755-8427 6832

Email & Skype: info@chipsmall.com Web: www.chipsmall.com

Address: A1208, Overseas Decoration Building, #122 Zhenhua RD., Futian, Shenzhen, China

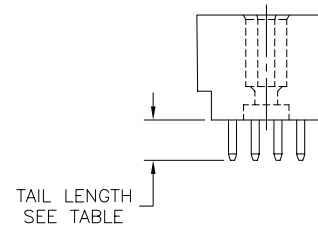
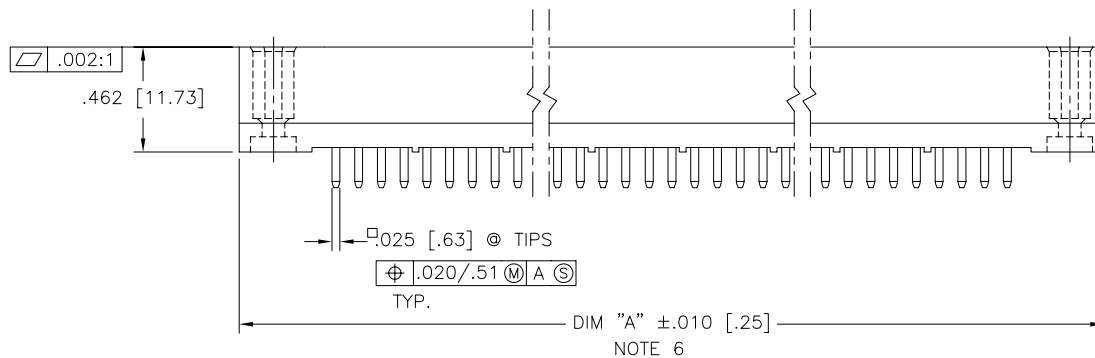
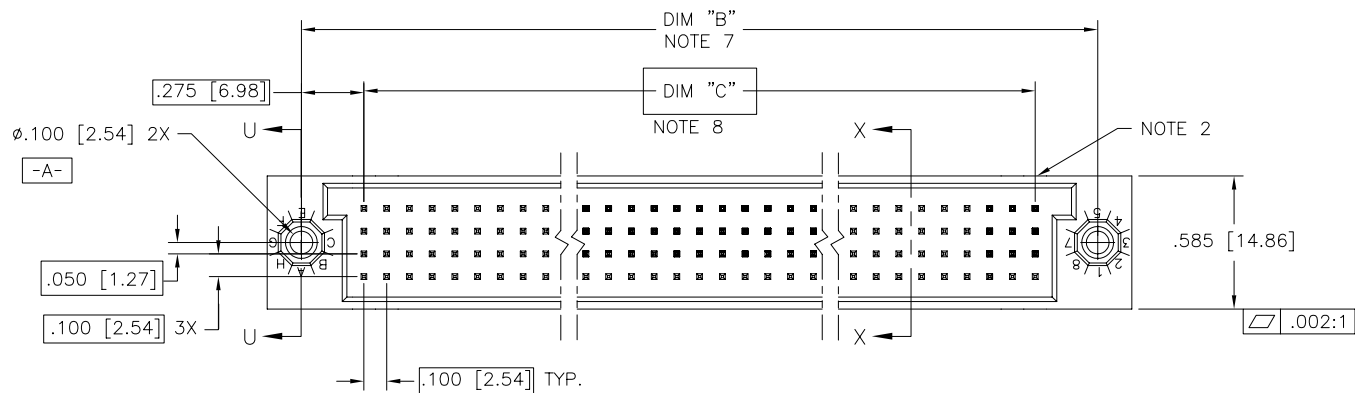




FCIconnect.com

Copyright FCI

PRODUCT NUMBER
SEE TABLE



mat'l. code NOTE 4				surface ISO 1302 ✓	tolerance ISO 406 ISO 1101	projection INCH/MM	product family HPC
ltr	ecp	no	dr	date	tolerances unless otherwise specified		title
K	V40941	PDP		6/1/94	angles	.XX±.01/.3	4 ROW VERTICAL HEADER
L	V90018	HTB		1/8/99	linear	.XXX±.005/.13	W/SOLDER TAIL PINS, 0 G.P.
M	V00272	JWS		2/1/00	0'±2'	.XXXX±.0020/.051	
N	V05-0475	DAI		7/20/05	dr	D.INGRAM 7/20/05	dwg no
P	V05-0723	HTB		7/20/05	enrg	D.HORCHLER 7/20/05	sheet 1 of 4 size
R	V05-1039	DAI		11/11/05	chr	T.BREWBAKER 7/20/05	A3
S	M06-0283	MHT		7/27/06	appd	D.HORCHLER 7/20/05	type
sheet	revision	S	S	S	S		Product Customer Drawing
index	sheet	1	2	3	4		

form: A3

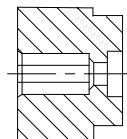


FCIconnect.com

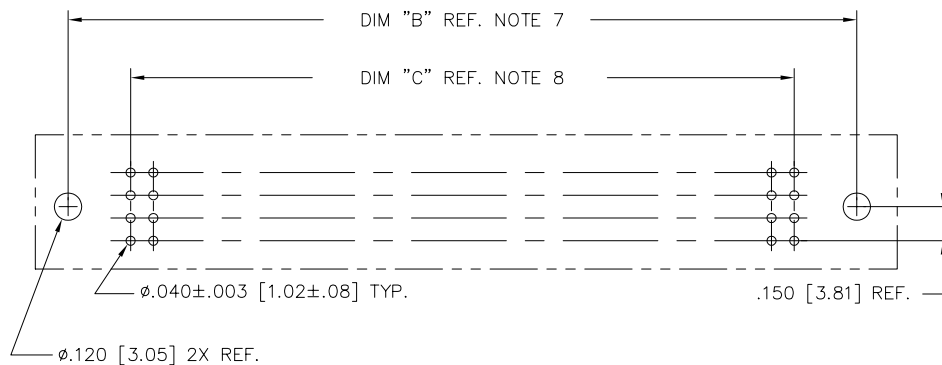
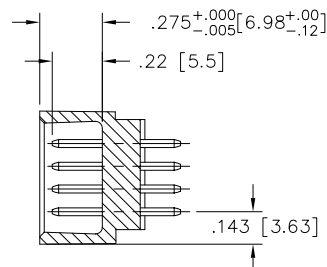
Copyright FCI

PRODUCT NUMBER
SEE TABLE

SECTION U-U



SECTION X-X



RECOMMENDED PCB LAYOUT
(ALL HOLES LOCATED ON .100/2.54 GRID
UNLESS OTHERWISE SPECIFIED)

mat'l. code NOTE 4				surface ISO 1302 <input checked="" type="checkbox"/>	tolerance ISO 406 ISO 1101	projection 	product family HPC
ltr	ecm	no	dr	date	tolerances unless otherwise specified	INCH/MM scale 1:1 	title
S					angles linear .XX \pm .01/.3		4 ROW VERTICAL HEADER
					0' \pm 2' .XXX \pm .005/.13		W/SOLDER TAIL PINS, 0 G.P.
					.XXXX \pm .0020/.051		dwg no sheet 2 of 4 size
				dr	D.INGRAM 7/20/05		50015 A3
				enr	D.HORCHLER 7/20/05		
				chr	T.BREWBAKER 7/20/05		
				app	D.HORCHLER 7/20/05		type Product Customer Drawing
sheet index	revision sheet						

form: A3

	1	5	10	15	20	25	30	32	
<u>D</u>									
<u>C</u>									
<u>B</u>	B	B							
<u>A</u>	B								

1. ALL POSITIONS ARE LOADED WITH "A" EXCEPT WHERE NOTED.
2. COLUMN 1, ROW A IS DESIGNATED AS SIGNAL PIN 1, AS VIEWED FROM THE MATING FACE.
3. SIGNAL DATA FOR 50015-XX022 AND 50015-XX022LF:
SIZE 4 x 32
TOTAL NO. OF POSITIONS - 128
NO. OF POSITIONS LOADED - 128

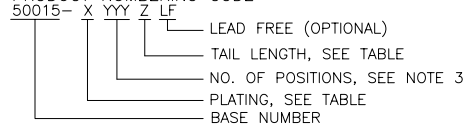
ITEM KEY	QTY.	MATING LENGTH
A	113	.180/4.57
B	11	.260/6.60
C	4	.220/5.59

[illegible]

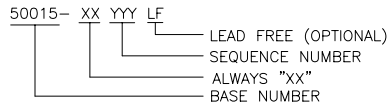
PRODUCT NUMBER	NUMBER OF POSITIONS NOTE 3	TAIL LENGTH ±.015/0.38	CONTACT PLATING
50015-1YYYA	YYY	.177/4.50	30u"/.76u Au
50015-1YYYC	YYY	.533/13.54	30u"/.76u Au
50015-1YYYD	YYY	.733/18.62	30u"/.76u Au
50015-1YYYG	YYY	.250/6.35	30u"/.76u Au
50015-1YYYJ	YYY	.120/3.05	30u"/.76u Au
50015-3YYYA	YYY	.177/4.50	50u"/1.27u Au
50015-3YYYC	YYY	.533/13.54	50u"/1.27u Au
50015-3YYYD	YYY	.733/18.62	50u"/1.27u Au
50015-3YYYG	YYY	.250/6.35	50u"/1.27u Au
50015-3YYYJ	YYY	.120/3.05	50u"/1.27u Au
50015-5YYYA	YYY	.177/4.50	30u"/.76u GXT
50015-5YYVALF	YYY	.177/4.50	30u"/.76u GXT
50015-5YYYC	YYY	.533/13.54	30u"/.76u GXT
50015-5YYYCLF	YYY	.533/13.54	30u"/.76u GXT
50015-5YYYD	YYY	.733/18.62	30u"/.76u GXT
50015-5YYYDLF	YYY	.733/18.62	30u"/.76u GXT
50015-5YYYG	YYY	.250/6.35	30u"/.76u GXT
50015-5YYYGLF	YYY	.250/6.35	30u"/.76u GXT
50015-5YYYJ	YYY	.120/3.05	30u"/.76u GXT
50015-5YYYJLF	YYY	.120/3.05	30u"/.76u GXT
50015-XX022	128	.250/6.35	30u"/.76u Au
50015-XX022LF	128	.250/6.35	30u"/.76u GXT

NOTES:

1. PRODUCT NUMBERING CODE



PRODUCT NUMBERING CODE FOR SELECT LOAD



- MANUFACTURE'S LOGO, PN, AND LOT CODE TO APPEAR ON THIS SURFACE.
- THIS PRODUCT IS CONFIGURED IN SIZES OF 6 THRU 80 COLUMNS IN INCREMENTS OF ONE, i.e. 6, 7, 8, 9,79, 80.
- MATERIAL:
HOUSING - GLASS AND MINERAL FILLED HIGH TEMPERTURE THERMOPLASTIC, FLAME RETARDANT PER UL94V-0. COLOR-BLACK
CONTACT - PHOS BRONZE
- PLATING:
CONTACT AREA - SEE PRODUCT NUMBER TABLE
TAILS-EITHER TIN OR TIN LEAD, SEE PRODUCT NUMBER TABLE
- DIMENSION "A" CALCULATION = .100 (2.54) X NO. OF COLUMNS + .75 (19.1)
- DIMENSION "B" CALCULATION = .100 (2.54) X NO. OF COLUMNS + .450(11.43)
- DIMENSION "C" CALCULATION = .100 (2.54) X NO. OF COLUMNS - .100(2.54)
- ALL POSITIONS ARE LOADED EXCEPT FOR -XXYYY ASSEMBLIES WHICH HAVE SELECTIVE LOADING.
- THIS PRODUCT (WITH "LF" SUFFIX) MEETS EUROPEAN UNION DIRECTIVES AND OTHER COUNTRY REGULATIONS AS DESCRIBED IN GS-22-008.
- THIS HOUSING WILL WITHSTAND EXPOSURE TO 260°C PEAK TEMPERATURE FOR 10-30 SECONDS IN A CONVECTION, INFRA-RED OR VAPOR PHASE REFLOW OVEN.

mat'l. code NOTE 4				surface ISO 1302 ✓	tolerance ISO 406 ISO 1101	projection INCH/MM	product family HPC
ltr	ecr	no	dr	date	tolerances unless otherwise specified		title
S					angles linear .XX±.01/.3 .XXX±.005/.13 .XXXX±.0020/.05	INCH/MM	4 ROW VERTICAL HEADER W/SOLDER TAIL PINS, 0 G.P.
					0'±2'	scale 1:1	dwg no sheet 4 of 4 size
				dr	D.INGRAM 7/20/05	FCI	A3
				enr	D.HORCHLER 7/20/05		
				chr	T.BREWBAKER 7/20/05		
				appd	D.HORCHLER 7/20/05		
sheet index	revision sheet						type Product Customer Drawing

form: A3