



Chipsmall Limited consists of a professional team with an average of over 10 year of expertise in the distribution of electronic components. Based in Hongkong, we have already established firm and mutual-benefit business relationships with customers from,Europe,America and south Asia,supplying obsolete and hard-to-find components to meet their specific needs.

With the principle of “Quality Parts,Customers Priority,Honest Operation,and Considerate Service”,our business mainly focus on the distribution of electronic components. Line cards we deal with include Microchip,ALPS,ROHM,Xilinx,Pulse,ON,Everlight and Freescale. Main products comprise IC,Modules,Potentiometer,IC Socket,Relay,Connector.Our parts cover such applications as commercial,industrial, and automotives areas.

We are looking forward to setting up business relationship with you and hope to provide you with the best service and solution. Let us make a better world for our industry!



Contact us

Tel: +86-755-8981 8866 Fax: +86-755-8427 6832

Email & Skype: info@chipsmall.com Web: www.chipsmall.com

Address: A1208, Overseas Decoration Building, #122 Zhenhua RD., Futian, Shenzhen, China



DWG. NO.
SD-500812-001

8 7 6 5 4 3 2 1

F

D

V

C

B

DO NOT SCALE DRAWING

EC NO.
DRWN:
CHK:
APPR:

EC NO.
DRWN:
CHK:
APPR:

EC NO.
DRWN:
CHK:
APPR:

REVISED '03/10/07
EC NO. J2004-0781
DRWN: S.AKIYAMA
CHK: N.MATSUURA
APPR: YO.ITO

RELEASED '03/07/02
EC NO. J2004-0013
DRWN: S.AKIYAMA
CHK: J.MIYAZAWA
APPR: YO.ITO

REV

MATERIAL
材料 ガラス入り66ナイロン樹脂
UL94V-0 色:自然色(白)
66 NYLON G.F
UL94V-0 COLOR : NATURAL(WHITE)

FINISH
仕上げ #

WIRE RANGE
適用 配線範囲 #

INS. RANGE
被覆 外径 #

GENERAL TOLERANCES:
(UNLESS SPECIFIED)
一般公差

10 UNDER 未満 ±0.2
10 OVER 30 UNDER 未満 ±0.25
30 OVER 以上 ±0.3

ANGLE 角度 ±3°

SCALE
DESIGN UNITS
 mm INCH

DRAWN BY & DATE
S. Akiyama '03/06/25
CHECKED BY & DATE
J. Miyazawa '03/07/02
APPROVED BY & DATE
Y. Ito '03/07/02

CAD FILENAME
SD-500812-001.S01

THIRD ANGLE PROJECTION
DIMENSIONS:
 mm INCH mm ONLY
SHT REV
REVISION ON CAD ONLY

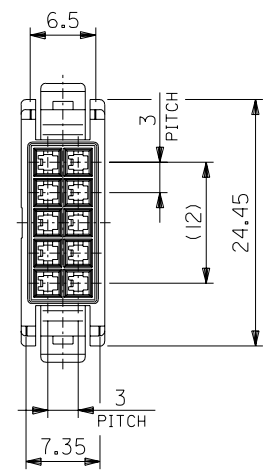
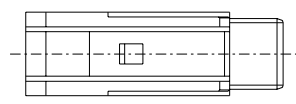
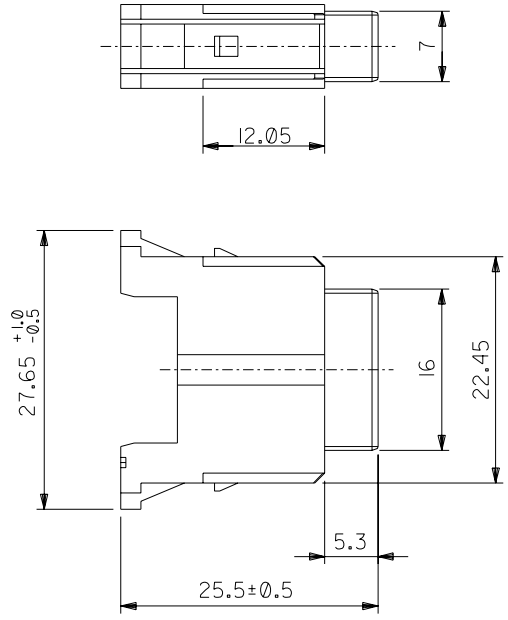
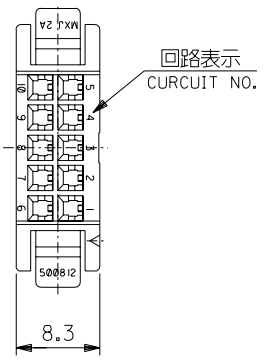
TITLE:
MINI ROBOT CONN. 10P PIN HOUSING

MOLEX INCORPORATED

MATERIAL NO. SEE CHART
DRAWING NO. SD-500812-001
SHEET NO. 1 OF 1

注記:
NOTES.

1. 適用ターミナル : 56118-****/56119-****
APPLICABLE TERMINAL



8 7 6 5 4 3 2 1 EN-02J(097) MXJ-54