



Chipsmall Limited consists of a professional team with an average of over 10 year of expertise in the distribution of electronic components. Based in Hongkong, we have already established firm and mutual-benefit business relationships with customers from,Europe,America and south Asia,supplying obsolete and hard-to-find components to meet their specific needs.

With the principle of “Quality Parts,Customers Priority,Honest Operation,and Considerate Service”,our business mainly focus on the distribution of electronic components. Line cards we deal with include Microchip,ALPS,ROHM,Xilinx,Pulse,ON,Everlight and Freescale. Main products comprise IC,Modules,Potentiometer,IC Socket,Relay,Connector.Our parts cover such applications as commercial,industrial, and automotives areas.

We are looking forward to setting up business relationship with you and hope to provide you with the best service and solution. Let us make a better world for our industry!



## Contact us

Tel: +86-755-8981 8866 Fax: +86-755-8427 6832

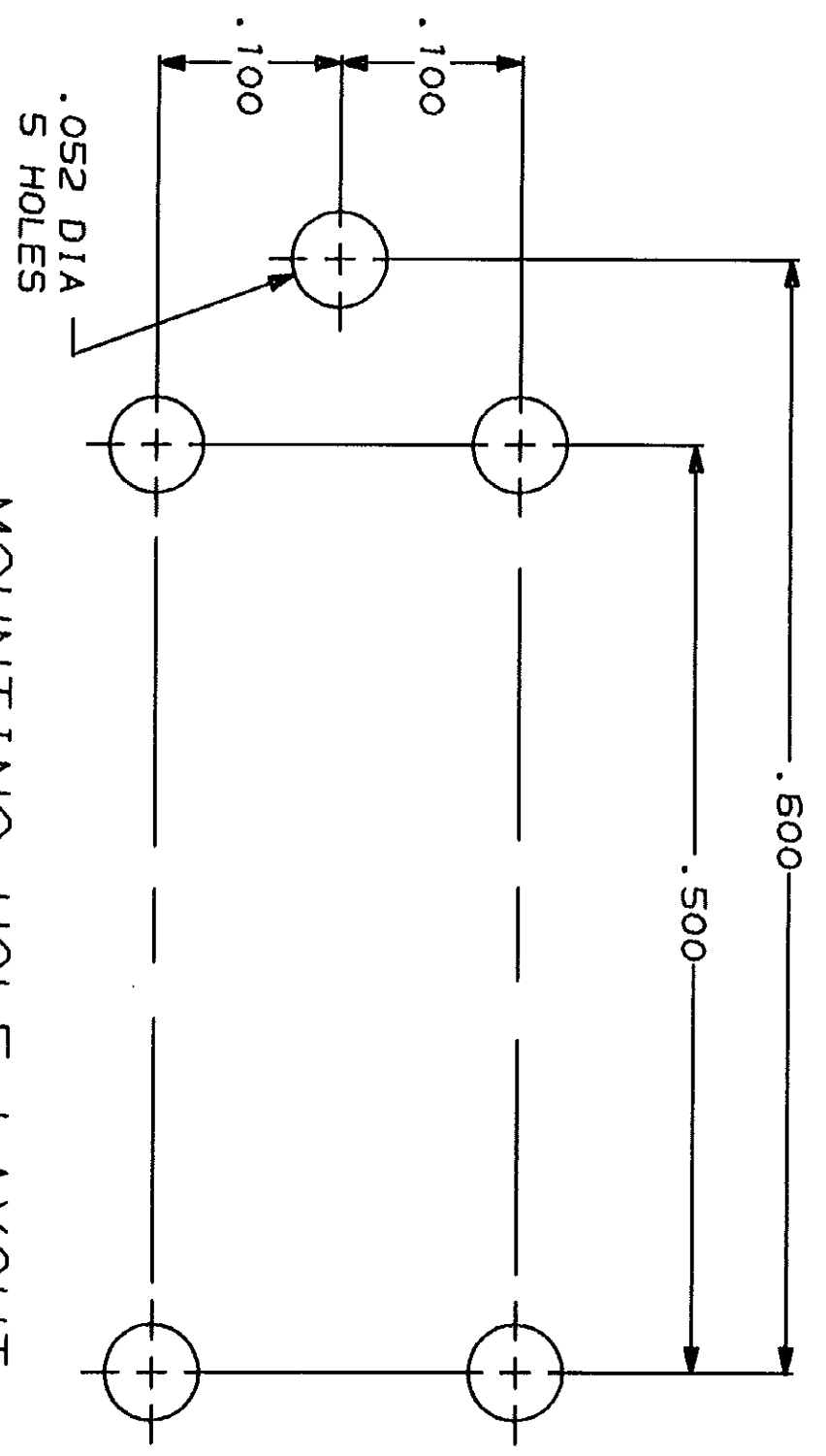
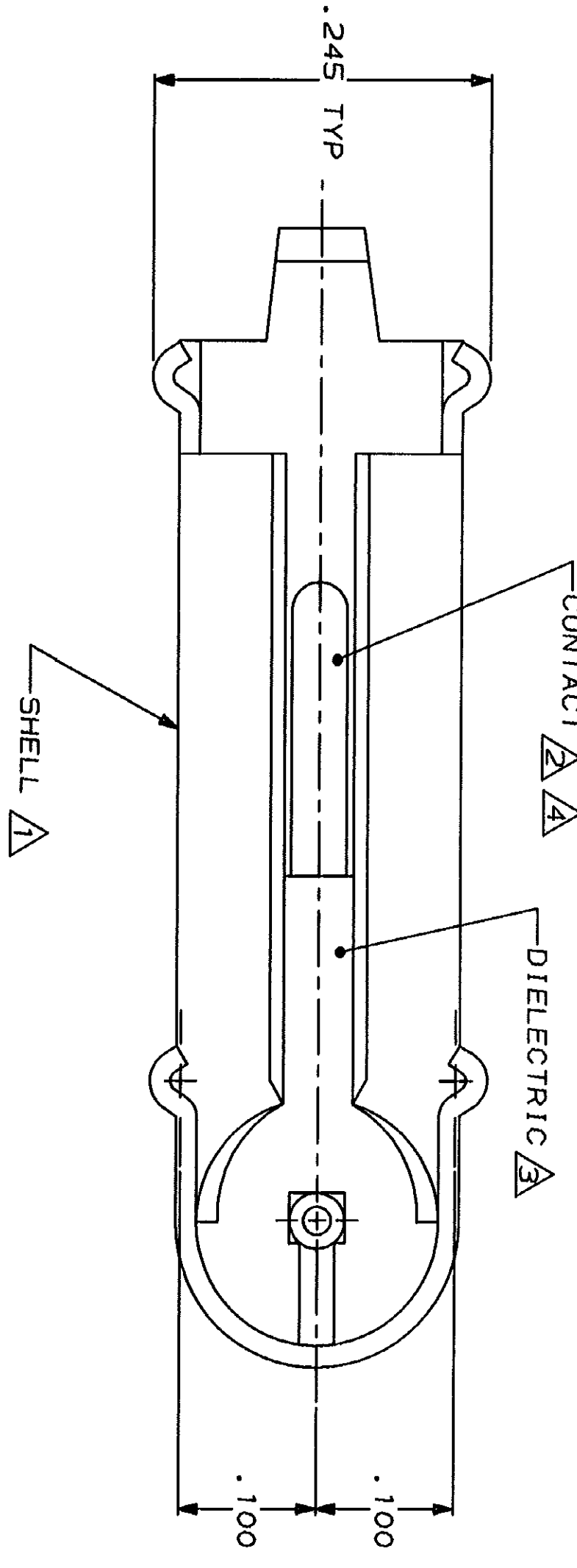
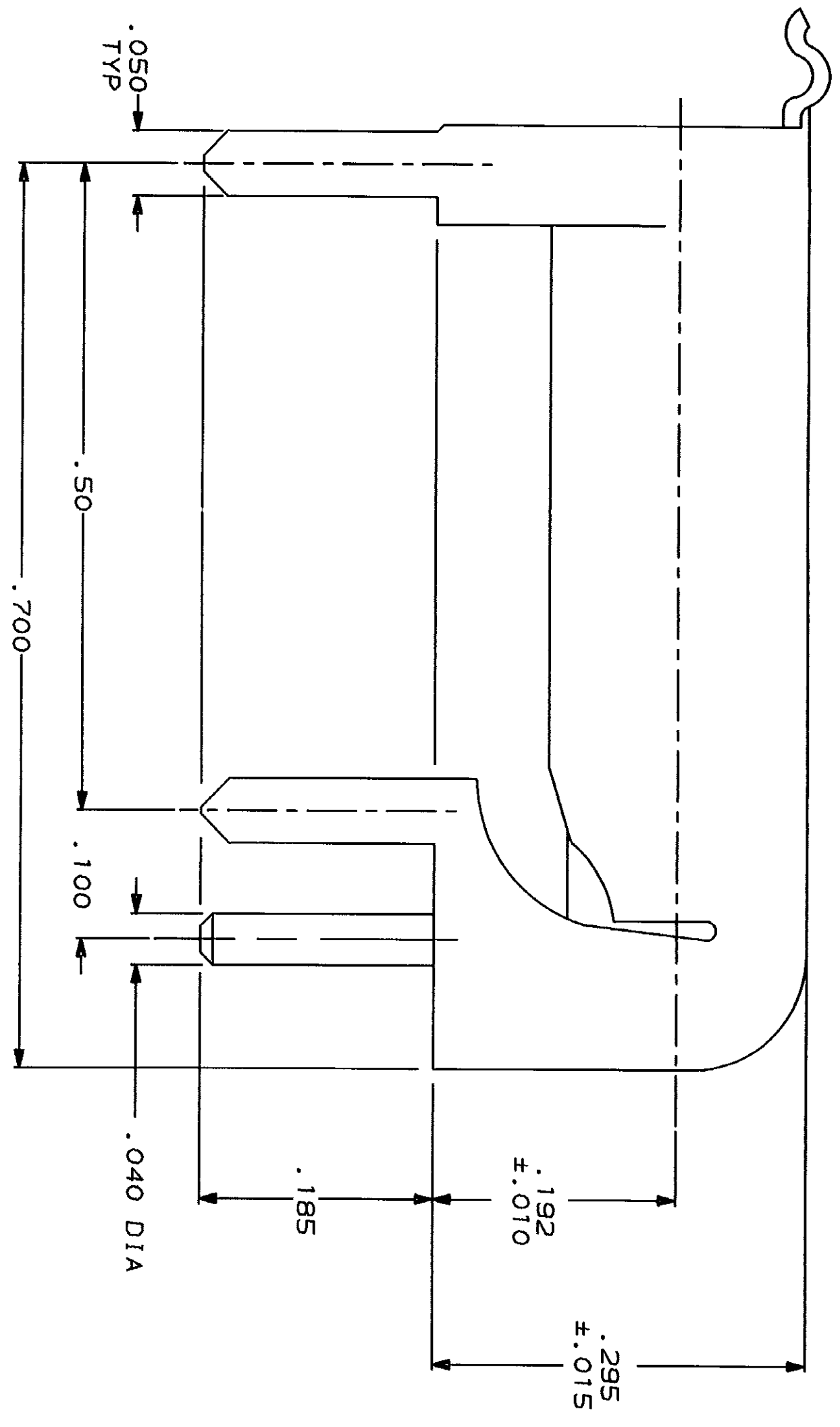
Email & Skype: info@chipsmall.com Web: www.chipsmall.com

Address: A1208, Overseas Decoration Building, #122 Zhenhua RD., Futian, Shenzhen, China



LOC	DIST	ZONE	LTR	DESCRIPTION	DATE	APPD
AJ	16		J	REVISED AND REDRAWN PER AJ-4040	6-29-89	JG
			K	OBS -2 PER AJ-3015	02/02/93	JPD

- 1 BRASS PER MIL-C-50
- 2 BRASS PER QQ-B-626
- 3 POLYPROPYLENE, GENERAL PURPOSE.
- 4 GOLD PLATE PER MIL-G-45204, .000030 MIN THK.
- 5 NICKEL PLATE PER QQ-N-290
6. FOR USE WITH .125 MAX PRINTED CIRCUIT BOARD.
7. SEE I.S. 1204.



MOUNTING HOLE LAYOUT

OBsolete	50105-2
SHELL FINISH	50105-1
PART NUMBER	

DO NOT SCALE PRINT. UNLESS SPECIFIED DIMENSIONS IN INCHES TOLERANCES ON:		DR	6-30-89	AMP INCORPORATED Merrilldale, Pa. 17105
1 PLG DEC ± .01		J.L. GROFT	9-28-89	
2 PLG DEC ± .01		S.J. MAGARO		
3 PLG DEC ± .008		M. SNEED	1-16-90	
MATERIAL		APPD	1-16-90	NAME
SEE NOTES 1 & 2		M. SNEED		
FINISH		PRODUCT SPEC		
SEE TABLE		108-12081		
APPLICATION SPEC				
WEIGHT		SIZE	SCALE	
		C	10:1	
		FSCN NO	DRAWING NO	
		00779	50105	
		SHEET	1 OF 1	

SOCKET, PCB, LOCKING  
 LATCH, MINIATURE