



Chipsmall Limited consists of a professional team with an average of over 10 year of expertise in the distribution of electronic components. Based in Hongkong, we have already established firm and mutual-benefit business relationships with customers from,Europe,America and south Asia,supplying obsolete and hard-to-find components to meet their specific needs.

With the principle of “Quality Parts,Customers Priority,Honest Operation,and Considerate Service”,our business mainly focus on the distribution of electronic components. Line cards we deal with include Microchip,ALPS,ROHM,Xilinx,Pulse,ON,Everlight and Freescale. Main products comprise IC,Modules,Potentiometer,IC Socket,Relay,Connector.Our parts cover such applications as commercial,industrial, and automotives areas.

We are looking forward to setting up business relationship with you and hope to provide you with the best service and solution. Let us make a better world for our industry!



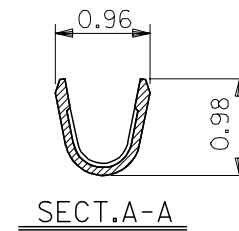
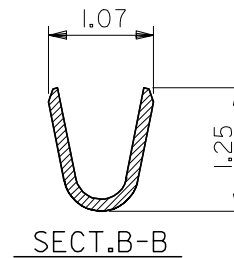
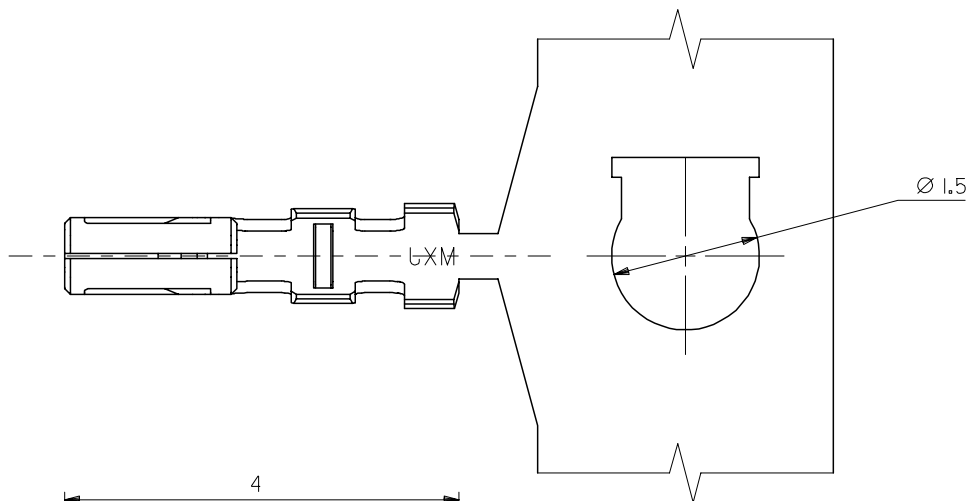
## Contact us

Tel: +86-755-8981 8866 Fax: +86-755-8427 6832

Email & Skype: [info@chipsmall.com](mailto:info@chipsmall.com) Web: [www.chipsmall.com](http://www.chipsmall.com)

Address: A1208, Overseas Decoration Building, #122 Zhenhua RD., Futian, Shenzhen, China

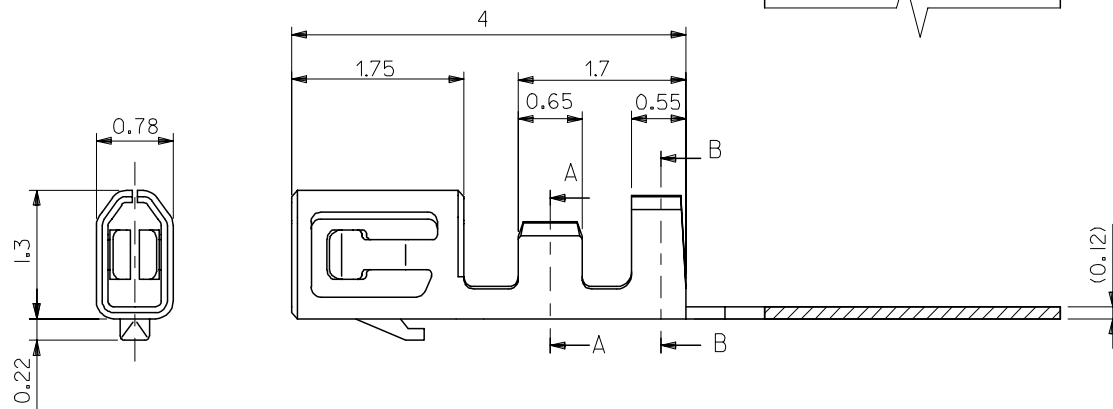




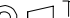
NOTES.

1. 適合ハウジング: 501189-\*\*\*\*  
APPLICABLE HOUSING: 501189-\*\*\*\*

2. メッキ仕様  
PLATING  
金メッキ: 0.1 µm MIN.  
Au PLATING  
ニッケルメッキ (下地): 1.0 µm MIN.  
Ni PLATING (UNDER PLATING)



501193-0100	バラ状 LOOSE
501193-0000	連鎖状 CHAIN
MATERIAL NO.	端子形状 FORM

MATERIAL リン青銅 PHOSPHOR BRONZE ±0.12		REVISED EC NO: J2005-0329 DRAWN: NYOSHIDA 2004/11/02 CHKD: MYAGI 2004/11/02 APPR: ANODA 2004/11/12 A	DESCRIPTION	GENERAL TOLERANCES (UNLESS SPECIFIED)		DIMENSION STYLE MM ONLY		SCALE 20:1	DESIGN UNITS METRIC		THIRD ANGLE PROJECTION
FINISH SEE NOTE				10 UNDER ±0.2		DRAWN BY DATE NYOSHIDA 2004/04/03		TITLE 1.0 WIRE TO BOARD CONN. CRIMP REC TERMINAL			
WIRE RANGE AWG#28-32				10 OVER 30 UNDER ±0.25		CHECKED BY DATE MYAGI 2004/04/03					
INS. RANGE ø 0.4-0.8				30 OVER ±0.3		APPROVED BY DATE MIYAZAWA 2004/04/03		MOLEX MOLEX INCORPORATED			
				ANGULAR ±3 °		MATERIAL NO.					
		DRAFT WHERE APPLICABLE MUST REMAIN WITHIN DIMENSIONS		SEE CHART		SD-501193-001		1 OF 1			
THIS DRAWING CONTAINS INFORMATION THAT IS PROPRIETARY TO MOLEX INCORPORATED AND SHOULD NOT BE USED WITHOUT WRITTEN PERMISSION											