



Chipsmall Limited consists of a professional team with an average of over 10 year of expertise in the distribution of electronic components. Based in Hongkong, we have already established firm and mutual-benefit business relationships with customers from,Europe,America and south Asia,supplying obsolete and hard-to-find components to meet their specific needs.

With the principle of "Quality Parts,Customers Priority,Honest Operation,and Considerate Service",our business mainly focus on the distribution of electronic components. Line cards we deal with include Microchip,ALPS,ROHM,Xilinx,Pulse,ON,Everlight and Freescale. Main products comprise IC,Modules,Potentiometer,IC Socket,Relay,Connector.Our parts cover such applications as commercial,industrial, and automotives areas.

We are looking forward to setting up business relationship with you and hope to provide you with the best service and solution. Let us make a better world for our industry!



Contact us

Tel: +86-755-8981 8866 Fax: +86-755-8427 6832

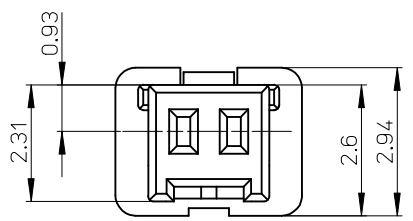
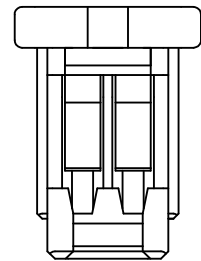
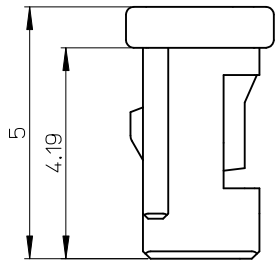
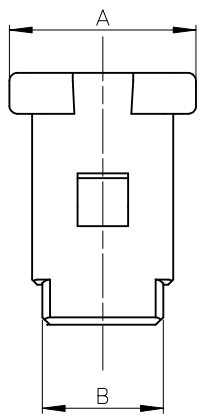
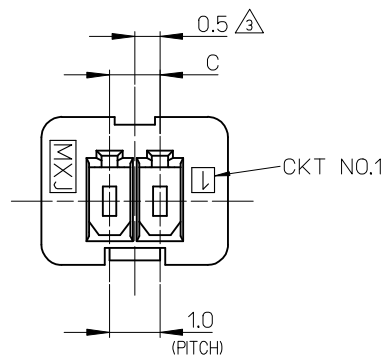
Email & Skype: info@chipsmall.com Web: www.chipsmall.com

Address: A1208, Overseas Decoration Building, #122 Zhenhua RD., Futian, Shenzhen, China



10 9 8 7 6 5 4 3 2 1

- NOTES.
- 適合ターミナル : 501334-****
APPLICABLE TERMINAL : 501334-****
 - 嵌合相手 : 501331-****
MATE WITH : 501331-****
 - 偶数極に適用
APPLY FOR EVEN CIRCUIT SIZE
 - 6~15極は、SD-501330-002を参照下さい。
REFER TO SD-501330-002 ABOUT 6-15CKT.
 - ELV及びRoHS適合品。
ELV AND RoHS COMPLIANT.
 - 材料
MATERIAL
ポリアミド 色:SHEET2参照
POLYAMIDE COLOR: SEE SHEET 2
ガラス無充填
GLASS FILLED : 0%
UL94V-0



※対応可能な極数は、別途お問い合わせ下さい。


4.0	5.4	6.7	501330-05**	5	501330-**00
3.0	4.4	5.7	501330-04**	4	
2.0	3.4	4.7	501330-03**	3	501330-**3*
1.0	2.4	3.7	501330-02**	2	
C	B	A	MATERIAL NO.	CKT.	MODEL NO.

REVISED EC NO: J2014-1523 DRWN:KASHIO 2012/10/11 CHKD:KASAKAWA 2014/04/09 APPR:NUKITA 2014/04/09	DESCRIPTION	GENERAL TOLERANCES (UNLESS SPECIFIED)		DIMENSION STYLE MM ONLY		SCALE 10:1	DESIGN UNITS METRIC	THIRD ANGLE PROJECTION	
		10 UNDER	±0.2	DRAWN BY NYOSHIDA	DATE 2004/07/30	TITLE 1.0 WIRE TO BOARD CONN. 1-ROW RECEPTACLE HOUSING 2-5CKT. molex			
		10 OVER 30 UNDER	±0.25	CHECKED BY MYAGI	DATE 2004/07/30				
		30 OVER	±0.3	APPROVED BY MIYAZAWA	DATE 2004/07/30				
		ANGULAR ±3 °		DRAFT WHERE APPLICABLE MUST REMAIN WITHIN DIMENSIONS		MATERIAL NO. SEE CHART	DOCUMENT NO. SD-501330-001	SHEET NO. 1 OF 2	
SIZE A3		THIS DRAWING CONTAINS INFORMATION THAT IS PROPRIETARY TO MOLEX INCORPORATED AND SHOULD NOT BE USED WITHOUT WRITTEN PERMISSION							

9 8 7 6 5 4 3 2

紫 VIOLET	橙 ORANGE	茶 BROWN	緑 GREEN	青 BLUE	黄 YELLOW	赤 RED	黒 BLACK	色 COLOR	
501330-0539	501330-0538	501330-0537	501330-0536	501330-0534	501330-0533	501330-0532	501330-0531	5	501330-***3*
501330-0439	501330-0438	501330-0437	501330-0436	501330-0434	501330-0433	501330-0432	501330-0431	4	
501330-0339	501330-0338	501330-0337	501330-0336	501330-0334	501330-0333	501330-0332	501330-0331	3	
501330-0239	501330-0238	501330-0237	501330-0236	501330-0234	501330-0233	501330-0232	501330-0231	2	
PLASTIG BAG PACKAGE オーダー番号 ORDER NO.	PLASTIG BAG PACKAGE オーダー番号 ORDER NO.	PLASTIG BAG PACKAGE オーダー番号 ORDER NO.	PLASTIG BAG PACKAGE オーダー番号 ORDER NO.	PLASTIG BAG PACKAGE オーダー番号 ORDER NO.	PLASTIG BAG PACKAGE オーダー番号 ORDER NO.	PLASTIG BAG PACKAGE オーダー番号 ORDER NO.	PLASTIG BAG PACKAGE オーダー番号 ORDER NO.	CKT.	CONNECTOR SERIES NO.

白 WHITE		色 COLOR	
501330-0500	5	501330-***00	
501330-0400	4		
501330-0300	3		
501330-0200	2		
PLASTIG BAG PACKAGE オーダー番号 ORDER NO.	CKT.	CONNECTOR SERIES NO.	

REVISED EC NO: J2014-1523 DRWN: KWASHIO 2012/10/11 CHKD: KASAKAWA 2014/04/09 APPR: NUKITA 2014/04/09	GENERAL TOLERANCES (UNLESS SPECIFIED)		DIMENSION STYLE MM ONLY		SCALE ---	DESIGN UNITS METRIC	THIRD ANGLE PROJECTION
	10 UNDER	±---	DRAWN BY KWASHIO	DATE 2012/10/11	TITLE 1.0 WIRE TO BOARD CONN. 1-ROW RECEPTACLE HOUSING 2-5CKT.		
	10 OVER 30 UNDER	±---	CHECKED BY KASAKAWA	DATE 2012/10/11	 SD-501330-001		
	30 OVER	±---	APPROVED BY NUKITA	DATE 2014/04/09			
ANGULAR ±---°		DRAFT WHERE APPLICABLE MUST REMAIN WITHIN DIMENSIONS		SEE CHART		2 OF 2	
				THIS DRAWING CONTAINS INFORMATION THAT IS PROPRIETARY TO MOLEX INCORPORATED AND SHOULD NOT BE USED WITHOUT WRITTEN PERMISSION			