



Chipsmall Limited consists of a professional team with an average of over 10 year of expertise in the distribution of electronic components. Based in Hongkong, we have already established firm and mutual-benefit business relationships with customers from,Europe,America and south Asia,supplying obsolete and hard-to-find components to meet their specific needs.

With the principle of “Quality Parts,Customers Priority,Honest Operation,and Considerate Service”,our business mainly focus on the distribution of electronic components. Line cards we deal with include Microchip,ALPS,ROHM,Xilinx,Pulse,ON,Everlight and Freescale. Main products comprise IC,Modules,Potentiometer,IC Socket,Relay,Connector.Our parts cover such applications as commercial,industrial, and automotives areas.

We are looking forward to setting up business relationship with you and hope to provide you with the best service and solution. Let us make a better world for our industry!



Contact us

Tel: +86-755-8981 8866 Fax: +86-755-8427 6832

Email & Skype: info@chipsmall.com Web: www.chipsmall.com

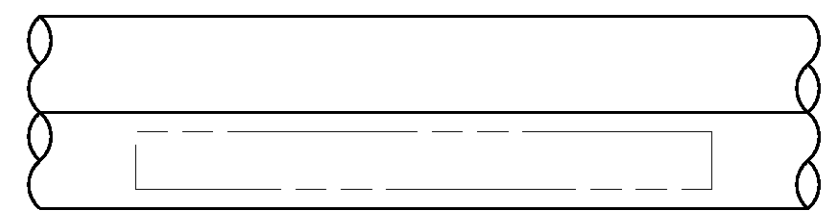
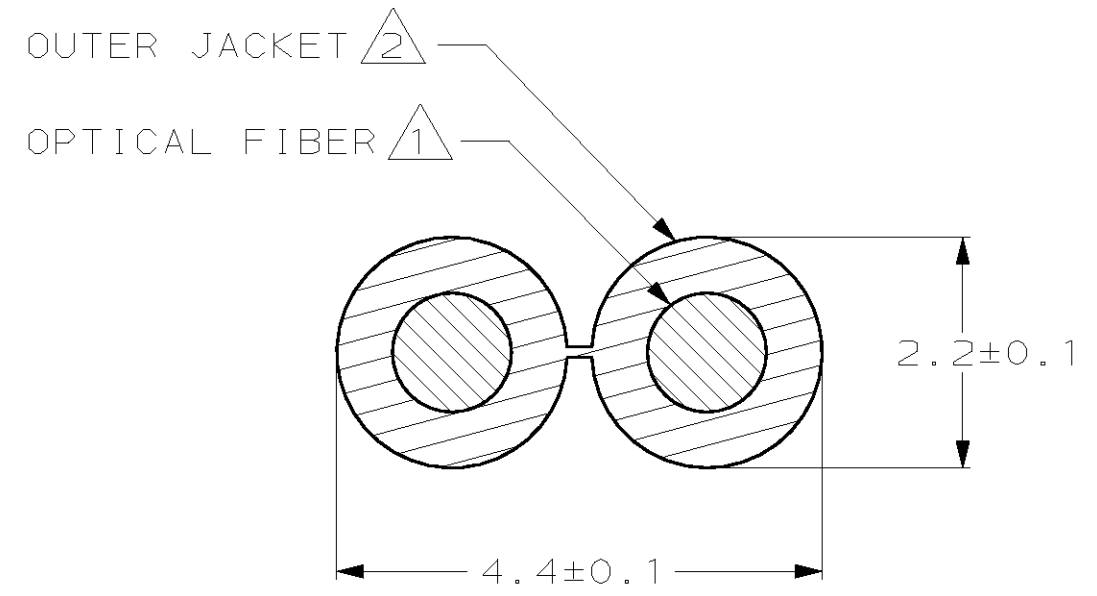
Address: A1208, Overseas Decoration Building, #122 Zhenhua RD., Futian, Shenzhen, China



THIS DRAWING IS UNPUBLISHED. RELEASED FOR PUBLICATION, 19 .
 © COPYRIGHT 19 BY AMP INCORPORATED. ALL RIGHTS RESERVED.

LOC	DIST	REVISIONS			
P	LTR	DESCRIPTION	DATE	DWN	APVD
CE	16	G	REV PER 0A00-0037-02	07FEB02	KG SB

- 1 STEP INDEX PLASTIC OPTICAL FIBER
 - A. CORE REFRACTIVE INDEX: 1.49 TYP.
 - B. CLAD REFRACTIVE INDEX: 1.42 TYP.
 - C. NUMERICAL APERTURE: 0.46 TYP.
 - D. CORE DIAMETER: 980±60um.
 - E. CLAD DIAMETER: 1000±60um.
- 2 JACKET
 - A. MATERIAL: POLYETHYLENE.
 - B. COLOR: BLACK.
- 3. ATTENUATION AT 650nm AND 25°C
 - A. TYPICAL: 140 dB/km.
 - B. MAX: 150 dB/km.
- 4. RATINGS
 - A. OPERATING TEMPERATURE: -40°C TO +85°C.
 - B. STORAGE TEMPERATURE: -40°C TO +85°C.
 - C. MINIMUM BEND RADIUS: 25mm.
 - D. TENSILE STRENGTH: 17 kg.
 - E. CABLE WEIGHT: 7.5 kg/km TYP.



50 ^{+1.0} / _{-0.0}	501336-2
500 ^{+10.0} / _{-0.0}	501336-1
LENGTH (METERS)	PART NUMBER

<small>THIS DRAWING IS A CONTROLLED DOCUMENT FOR AMP INCORPORATED. IT IS SUBJECT TO CHANGE AND THE CONTROLLING ENGINEERING ORGANIZATION SHOULD BE CONTACTED FOR THE LATEST REVISION.</small>		DWN	29MAR96	AMP Incorporated Harrisburg, PA 17105-3608
DIMENSIONS:		CHK	09APR96	
mm		APVD	09APR96	
		PRODUCT SPEC		
TOLERANCES UNLESS OTHERWISE SPECIFIED:		NAME		CABLE, FIBER OPTIC, DUAL 1000um PLASTIC, OPTIMATE®
0 PLC ±- 1 PLC ±- 2 PLC ±- 3 PLC ±- 4 PLC ±- ANGLES ±- FINISH -		APPLICATION SPEC		
MATERIAL		WEIGHT		SIZE
2		-		A3
		CUSTOMER DRAWING		CAGE CODE
				00779
				DRAWING NO
				C=501336
				SCALE
				NT5
				SHEET
				1 OF 1
				REV
				G