



Chipsmall Limited consists of a professional team with an average of over 10 year of expertise in the distribution of electronic components. Based in Hongkong, we have already established firm and mutual-benefit business relationships with customers from,Europe,America and south Asia,supplying obsolete and hard-to-find components to meet their specific needs.

With the principle of “Quality Parts,Customers Priority,Honest Operation,and Considerate Service”,our business mainly focus on the distribution of electronic components. Line cards we deal with include Microchip,ALPS,ROHM,Xilinx,Pulse,ON,Everlight and Freescale. Main products comprise IC,Modules,Potentiometer,IC Socket,Relay,Connector.Our parts cover such applications as commercial,industrial, and automotives areas.

We are looking forward to setting up business relationship with you and hope to provide you with the best service and solution. Let us make a better world for our industry!



## Contact us

Tel: +86-755-8981 8866 Fax: +86-755-8427 6832

Email & Skype: info@chipsmall.com Web: www.chipsmall.com

Address: A1208, Overseas Decoration Building, #122 Zhenhua RD., Futian, Shenzhen, China



10 9 8 7 6 5 4 3 2 1

F

E

D

C

B

A

F

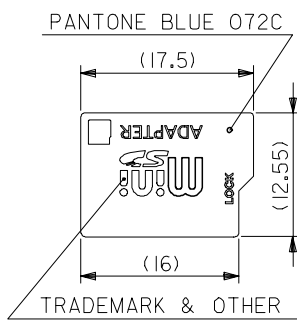
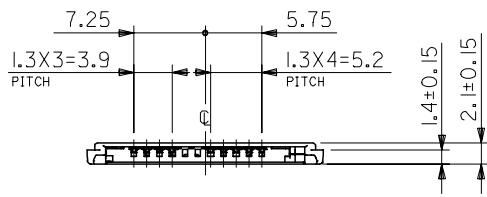
E

D

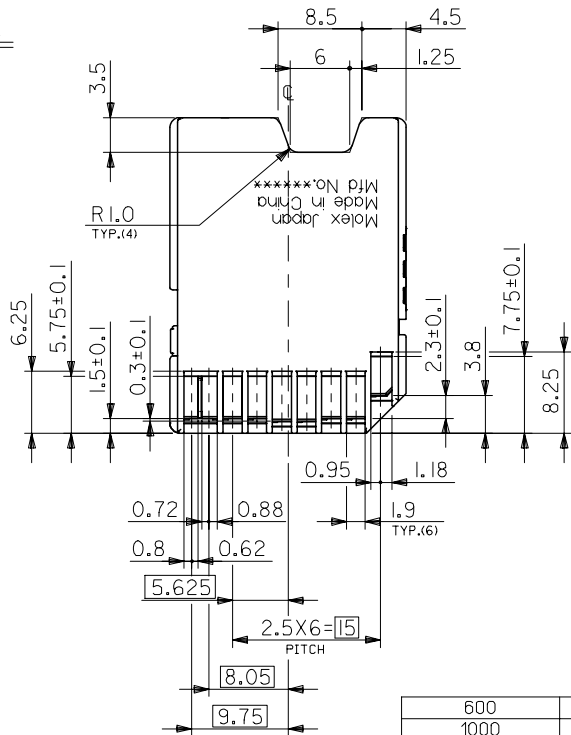
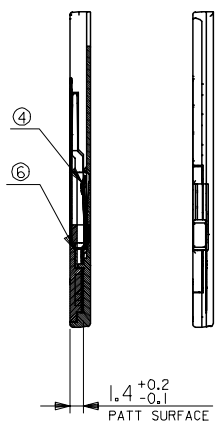
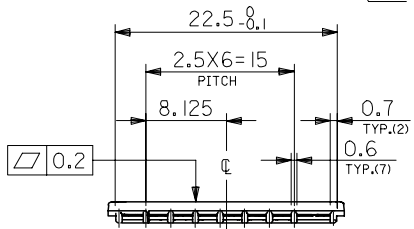
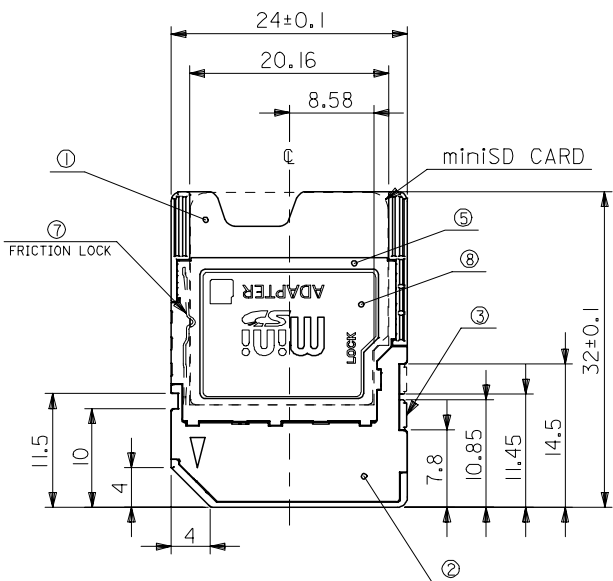
C

B

A



DETAIL OF LOGO MARK



No.	NAME	QTY	MATERIAL
①	BASE HOUSING	1	ABS+PC ALLOY, COLOR : BLACK
②	COVER HOUSING	1	ABS+PC ALLOY, COLOR : BLACK
③	WRITE PROTECT SWITCH	1	PBT, COLOR : GRAY
④	TERMINAL	9	COPPER ALLOY miniSD CARD CONTACT AREA : GOLD PLATING SD CARD CONTACT AREA : GOLD PLATING
⑤	SHELL	1	STAINLESS STEEL
⑥	STIFFNER	1	STAINLESS STEEL
⑦	CARD LOCK	1	STAINLESS STEEL
⑧	LOGO MARK	1	PRINT

GENERAL TOLERANCE ±0.15

600	501471-0901	501471-9**
1000	501471-0900	
QUANTITY PER CARTON	MATERIAL No.	MODEL No.

REVISED EC NO: J2005-2564 DRWN: JHOSOKAWA 2005/03/07 CHKD: KTOYODA 2005/03/03 APPR: NUKITA 2005/03/24	GENERAL TOLERANCES (UNLESS SPECIFIED)		DIMENSION STYLE MM ONLY		SCALE 2:1	DESIGN UNITS METRIC	THIRD ANGLE PROJECTION
	10 UNDER	±0.2	DRAWN BY MNABE1	DATE '04/10/13	TITLE MINISD CARD ADAPTER ASSY		
	10 OVER 30 UNDER	±0.25	CHECKED BY KTOYODA	DATE '04/10/13	-LEAD FREE-		
	30 OVER	±0.3	APPROVED BY NUKITA	DATE '04/10/13	molex MOLEX INCORPORATED		
	ANGULAR	±3 °	MATERIAL NO.	DOCUMENT NO. SD-501471-001	SHEET NO. 1 OF 1		
DRAFT WHERE APPLICABLE MUST REMAIN WITHIN DIMENSIONS		SEE CHART		THIS DRAWING CONTAINS INFORMATION THAT IS PROPRIETARY TO MOLEX INCORPORATED AND SHOULD NOT BE USED WITHOUT WRITTEN PERMISSION			