



Chipsmall Limited consists of a professional team with an average of over 10 year of expertise in the distribution of electronic components. Based in Hongkong, we have already established firm and mutual-benefit business relationships with customers from,Europe,America and south Asia,supplying obsolete and hard-to-find components to meet their specific needs.

With the principle of “Quality Parts,Customers Priority,Honest Operation,and Considerate Service”,our business mainly focus on the distribution of electronic components. Line cards we deal with include Microchip,ALPS,ROHM,Xilinx,Pulse,ON,Everlight and Freescale. Main products comprise IC,Modules,Potentiometer,IC Socket,Relay,Connector.Our parts cover such applications as commercial,industrial, and automotives areas.

We are looking forward to setting up business relationship with you and hope to provide you with the best service and solution. Let us make a better world for our industry!



## Contact us

Tel: +86-755-8981 8866 Fax: +86-755-8427 6832

Email & Skype: [info@chipsmall.com](mailto:info@chipsmall.com) Web: [www.chipsmall.com](http://www.chipsmall.com)

Address: A1208, Overseas Decoration Building, #122 Zhenhua RD., Futian, Shenzhen, China



10 9 8 7 6 5 4 3 2 1

F

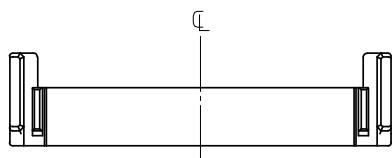
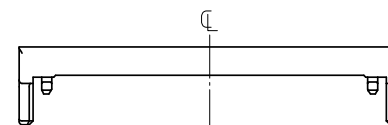
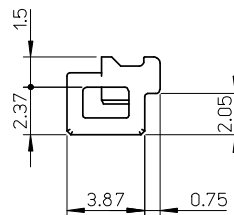
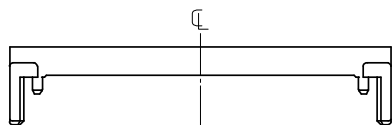
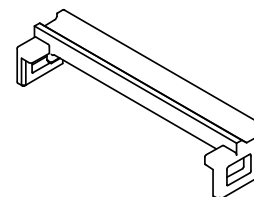
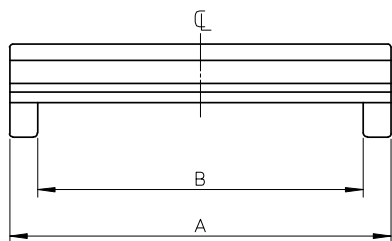
E

D

C

B

A



注 記  
NOTES

- 適合プラグジャケット : 501783-\*\*09  
APPLICABLE PLUG JACKET : 501783-\*\*09
- 材 質  
MATERIAL  
PBT, UL94V-0, 色 : 黒色  
PBT, UL94V-0, COLOR:BLACK
- ELV及びRoHS適合品  
ELV AND RoHS COMPLIANT

RELEASED EC NO: J2008-2552 DRW:KSETO CHKD:KIMIKAWA APPR:KIMIKAWA	DESCRIPTION	GENERAL TOLERANCES (UNLESS SPECIFIED)		DIMENSION STYLE MM ONLY		SCALE 4:1	DESIGN UNITS METRIC	THIRD ANGLE PROJECTION		
		10 UNDER	± 0.2	DRAWN BY H. IJIMA	DATE 07/12/25	TITLE 0.5 FFC TO BOARD CONN PLUG JACKET COVER				
		10 OVER 30 UNDER	± 0.25	CHECKED BY K. MORIKAWA	DATE 07/12/25					
		30 OVER	± 0.3	APPROVED BY H. HIRATA	DATE 07/12/25					
		ANGULAR ±1 °		MATERIAL NO. 501784-**08		DOCUMENT NO. SD-501784-005		SHEET NO. 1 OF 1		
	DRAFT WHERE APPLICABLE MUST REMAIN WITHIN DIMENSIONS		SIZE A3	THIS DRAWING CONTAINS INFORMATION THAT IS PROPRIETARY TO MOLEX INCORPORATED AND SHOULD NOT BE USED WITHOUT WRITTEN PERMISSION						