



Chipsmall Limited consists of a professional team with an average of over 10 year of expertise in the distribution of electronic components. Based in Hongkong, we have already established firm and mutual-benefit business relationships with customers from,Europe,America and south Asia,supplying obsolete and hard-to-find components to meet their specific needs.

With the principle of “Quality Parts,Customers Priority,Honest Operation,and Considerate Service”,our business mainly focus on the distribution of electronic components. Line cards we deal with include Microchip,ALPS,ROHM,Xilinx,Pulse,ON,Everlight and Freescale. Main products comprise IC,Modules,Potentiometer,IC Socket,Relay,Connector.Our parts cover such applications as commercial,industrial, and automotives areas.

We are looking forward to setting up business relationship with you and hope to provide you with the best service and solution. Let us make a better world for our industry!



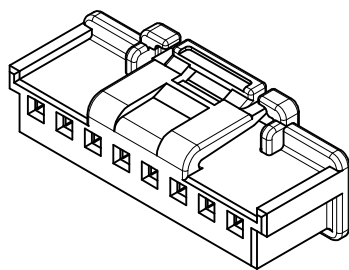
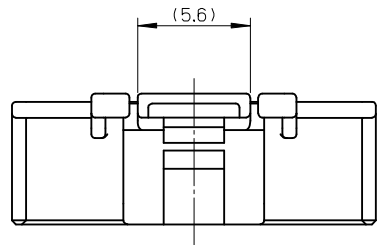
Contact us

Tel: +86-755-8981 8866 Fax: +86-755-8427 6832

Email & Skype: info@chipsmall.com Web: www.chipsmall.com

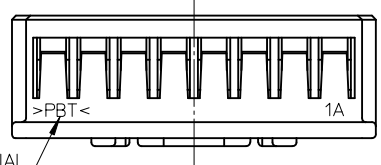
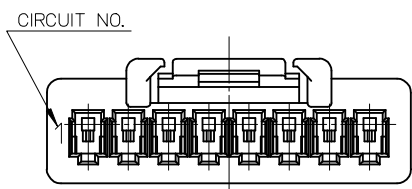
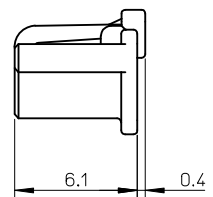
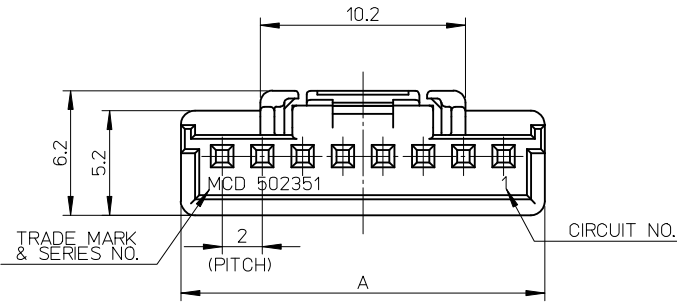
Address: A1208, Overseas Decoration Building, #122 Zhenhua RD., Futian, Shenzhen, China





NOTES

1. 材質: PBT UL94V-0
MATERIAL: PBT UL94V-0
2. 色: 白, 黒
COLOR: WHITE, BLACK
3. 適合端子: 50212, 50372, 56161, 560085シリーズ
APPLICABLE TERMINAL: 50212, 50372, 56161, 560085 SERIES
4. 嵌合相手: 502352, 560020シリーズ
MATES WITH: 502352, 560020 SERIES
5. ELV及びRoHS適合品
ELV AND RoHS COMPLIANT
6. 一般公差
GENERAL TOLERANCES
10 UNDER: 0.2
10 OVER 30 UNDER: 0.25
30 OVER: 0.3
ANGULAR: ±3°

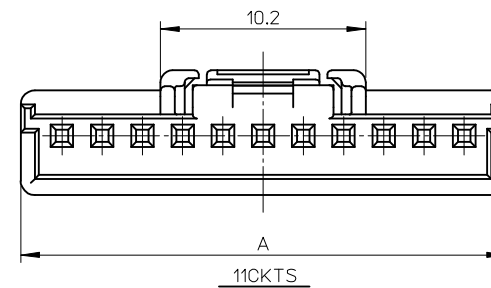
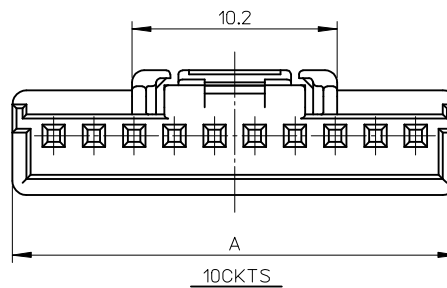
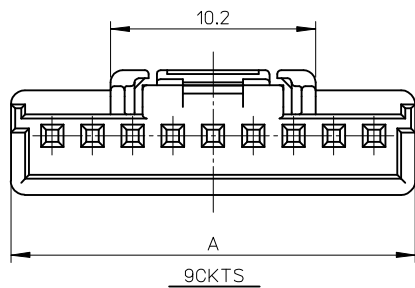
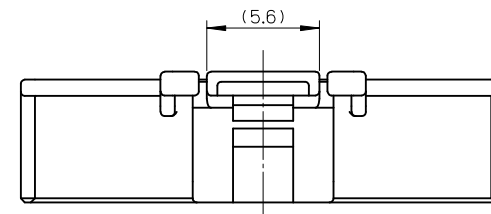
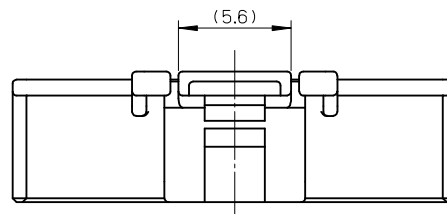
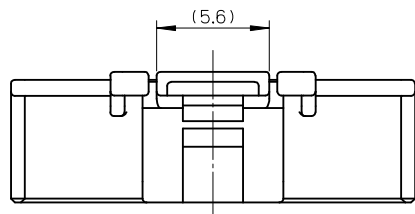
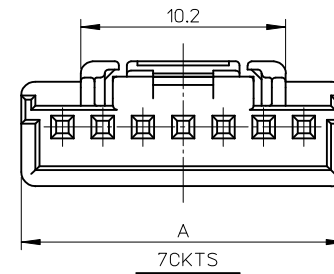
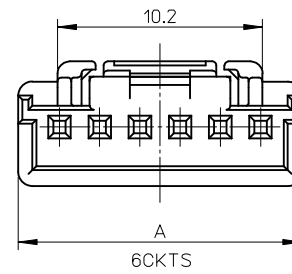
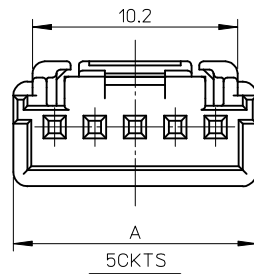
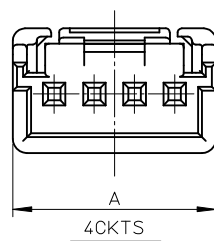
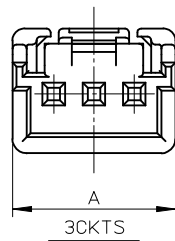
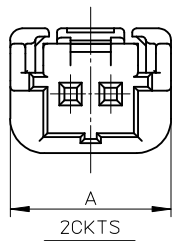
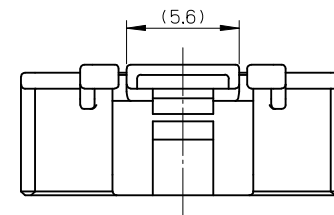
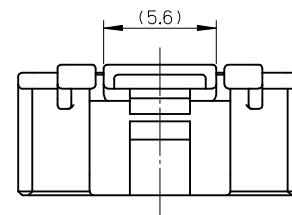
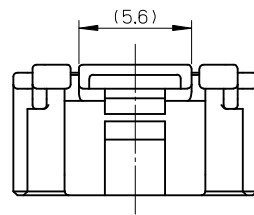
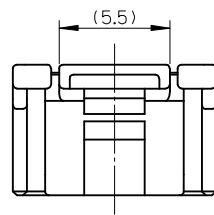
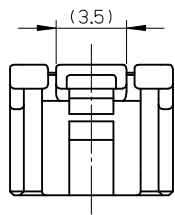
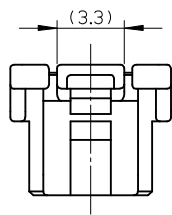


COLOR	A	MATERIAL NO.	CKTS	COLOR	A	MATERIAL NO.	CKTS
BLACK			15	NATURAL	32.1	502351-1500	15
			14		30.1	502351-1400	14
			13		28.1	502351-1300	13
			12		26.1	502351-1200	12
			11		24.1	502351-1100	11
			10		22.1	502351-1000	10
			9		20.1	502351-0900	9
			8		18.1	502351-0800	8
	18.1	502351-0801	8				
	16.1	502351-0701	7				
	14.1	502351-0601	6				
	12.1	502351-0501	5				
	10.1	502351-0401	4				
	8.1	502351-0301	3				
	8.0	502351-0201	2				

8CKTS

REVISED EC NO: JTR2016-0015 DRW:KNAGA102 2016/03/07 CHK:DHKOWATSU 2016/03/07 APPR: MAYAMOTO 2016/03/08	QUALITY SYMBOLS $\nabla = 0$ $\nabla = 0$ $\nabla = 0$	GENERAL TOLERANCES (UNLESS SPECIFIED)		DIMENSION STYLE MM ONLY		SCALE 4:1	DESIGN UNITS METRIC	THIRD ANGLE PROJECTION	
		4 PLACES ± --- ± --- 3 PLACES ± --- ± --- 2 PLACES ± --- ± --- 1 PLACE ± --- ± --- 0 PLACE ± --- ± ---	mm INCH --- --- --- --- --- --- --- --- --- ---	DRAWN BY SHSHIBATA	DATE 2007/12/18	TITLE 2.0MM PITCH WIRE TO BOARD CONN. RECEPTACLE HOUSING			
		ANGULAR ± - °		CHECKED BY HKOMATSU	DATE 2007/12/18	molex			
		DRAFT WHERE APPLICABLE MUST REMAIN WITHIN DIMENSIONS		APPROVED BY MAYAMOTO	DATE 2010/12/02	SEE CHART		DOCUMENT NO. SD-502351-001	SHEET NO. 1 OF 3

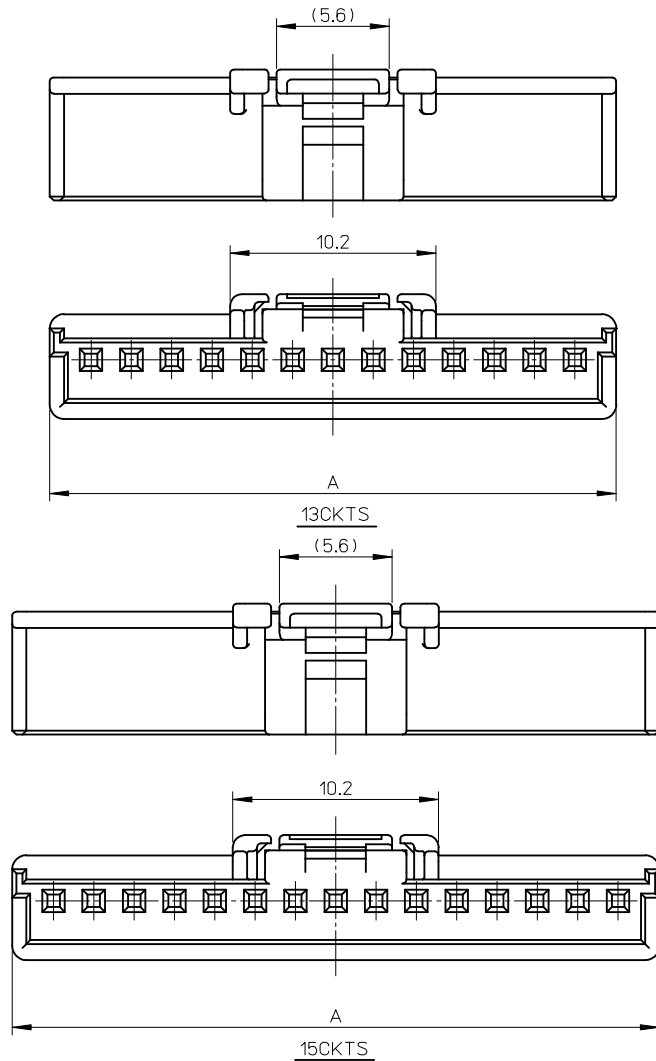
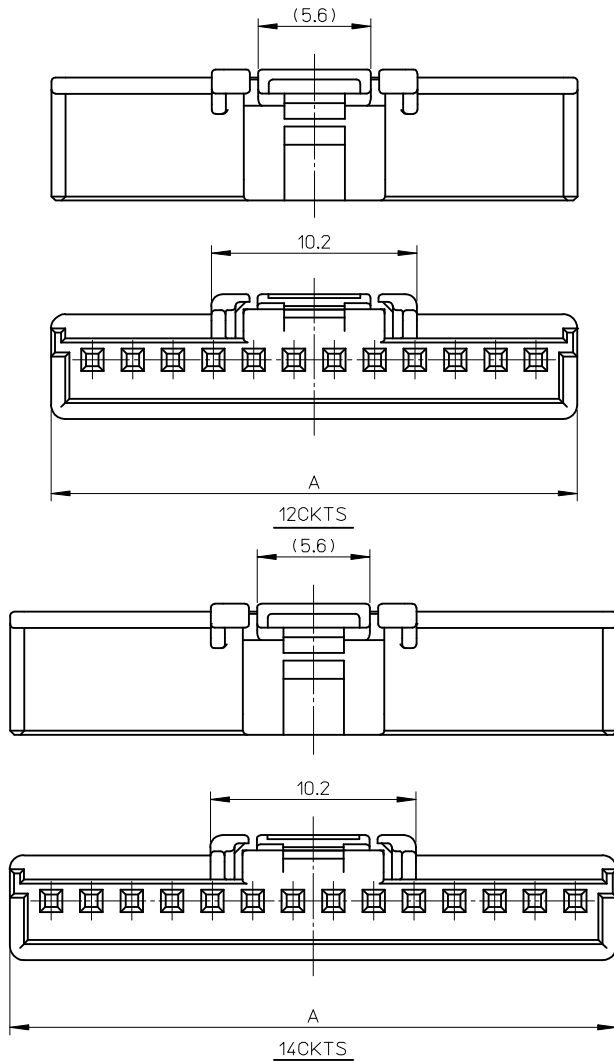
10 9 8 7 6 5 4 3 2 1



9 8 7 6 5 4 3 2 1

REVISED EC NO: JTR2016-0015 DRWN:KAGAI02 2016/03/07 CHKD:HKOMATSU 2016/03/07 APPR: MAYAMAMOTO 2016/03/08	QUALITY SYMBOLS F=0 E=0 G=0	GENERAL TOLERANCES (UNLESS SPECIFIED) <table border="1"> <thead> <tr> <th></th> <th>mm</th> <th>INCH</th> </tr> </thead> <tbody> <tr> <td>4 PLACES</td> <td>± ---</td> <td>± ---</td> </tr> <tr> <td>3 PLACES</td> <td>± ---</td> <td>± ---</td> </tr> <tr> <td>2 PLACES</td> <td>± ---</td> <td>± ---</td> </tr> <tr> <td>1 PLACE</td> <td>± ---</td> <td>± ---</td> </tr> <tr> <td>0 PLACE</td> <td>± ---</td> <td>± ---</td> </tr> </tbody> </table>		mm	INCH	4 PLACES	± ---	± ---	3 PLACES	± ---	± ---	2 PLACES	± ---	± ---	1 PLACE	± ---	± ---	0 PLACE	± ---	± ---	DIMENSION STYLE MM ONLY	SCALE 4:1	DESIGN UNITS METRIC	THIRD ANGLE PROJECTION
		mm	INCH																					
	4 PLACES	± ---	± ---																					
	3 PLACES	± ---	± ---																					
2 PLACES	± ---	± ---																						
1 PLACE	± ---	± ---																						
0 PLACE	± ---	± ---																						
REV DESCRIPTION H	ANGULAR ± - ° DRAFT WHERE APPLICABLE MUST REMAIN WITHIN DIMENSIONS	DRAWN BY DATE SHSHIBATA 2007/12/18 CHECKED BY DATE HKOMATSU 2007/12/18 APPROVED BY DATE MAYAMAMOTO 2010/12/02 MATERIAL NO.	TITLE 2.0MM PITCH WIRE TO BOARD CONN. RECEPTACLE HOUSING	molex																				
		SEE CHART	DOCUMENT NO. SD-502351-001	SHEET NO. 2 OF 3																				
		SIZE A3	THIS DRAWING CONTAINS INFORMATION THAT IS PROPRIETARY TO MOLEX INCORPORATED AND SHOULD NOT BE USED WITHOUT WRITTEN PERMISSION																					

10 9 8 7 6 5 4 3 2 1



REVISED EC NO: JTR2016-0015 DRW:KNAGA102 2016/03/07 CHKD:HKOMATSU 2016/03/07 APPR:MAYAMAMOTO 2016/03/08	QUALITY SYMBOLS $\nabla = 0$ $\nabla \square = 0$ $\nabla \square = 0$	GENERAL TOLERANCES (UNLESS SPECIFIED)		DIMENSION STYLE MM ONLY	SCALE 4:1	DESIGN UNITS METRIC	THIRD ANGLE PROJECTION		
		4 PLACES \pm --- \pm ---	3 PLACES \pm --- \pm ---	2 PLACES \pm --- \pm ---	1 PLACE \pm --- \pm ---	0 PLACE \pm --- \pm ---	DRAWN BY SHSHIBATA	DATE 2007/12/18	TITLE 2.0MM PITCH WIRE TO BOARD CONN. RECEPTACLE HOUSING
		ANGULAR \pm - °		DRAFT WHERE APPLICABLE MUST REMAIN WITHIN DIMENSIONS		CHECKED BY HKOMATSU	DATE 2007/12/18	APPROVED BY MAYAMAMOTO	DATE 2010/12/02
		SEE CHART		MATERIAL NO.	DOCUMENT NO.	SHEET NO.			

9 8 7 6 5 4 3 2 1

THIS DRAWING CONTAINS INFORMATION THAT IS PROPRIETARY TO MOLEX INCORPORATED AND SHOULD NOT BE USED WITHOUT WRITTEN PERMISSION