



Chipsmall Limited consists of a professional team with an average of over 10 year of expertise in the distribution of electronic components. Based in Hongkong, we have already established firm and mutual-benefit business relationships with customers from,Europe,America and south Asia,supplying obsolete and hard-to-find components to meet their specific needs.

With the principle of “Quality Parts,Customers Priority,Honest Operation,and Considerate Service”,our business mainly focus on the distribution of electronic components. Line cards we deal with include Microchip,ALPS,ROHM,Xilinx,Pulse,ON,Everlight and Freescale. Main products comprise IC,Modules,Potentiometer,IC Socket,Relay,Connector.Our parts cover such applications as commercial,industrial, and automotives areas.

We are looking forward to setting up business relationship with you and hope to provide you with the best service and solution. Let us make a better world for our industry!



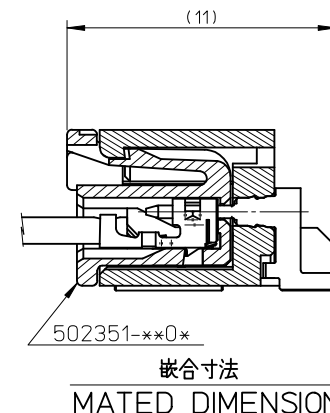
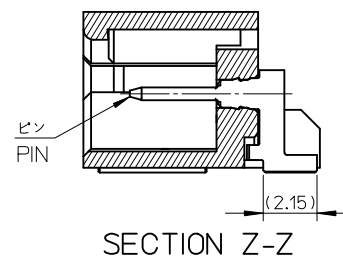
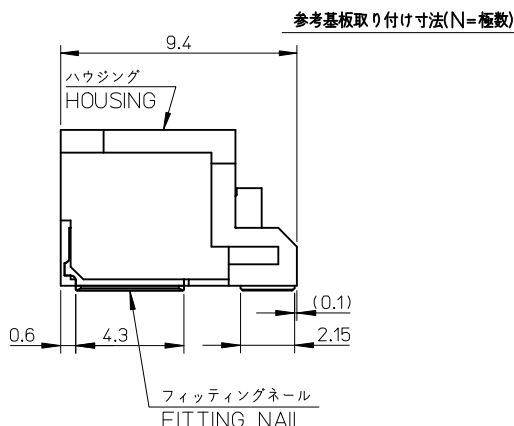
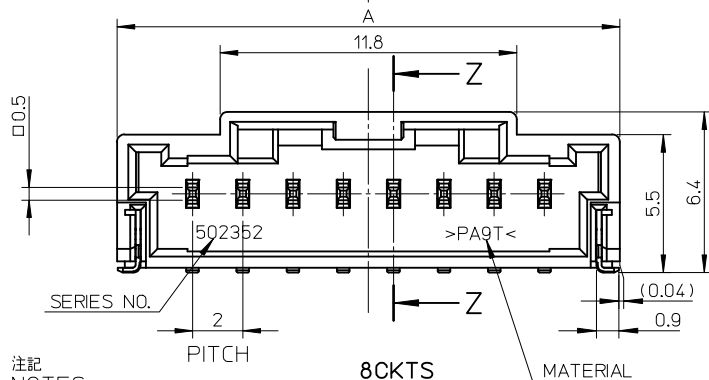
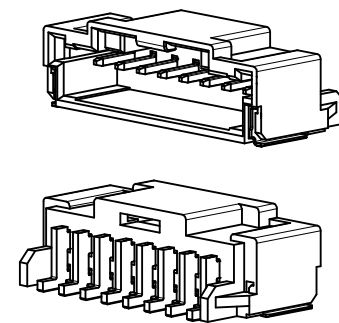
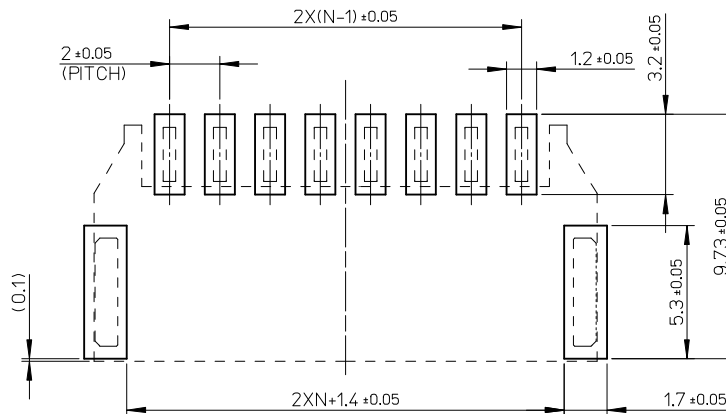
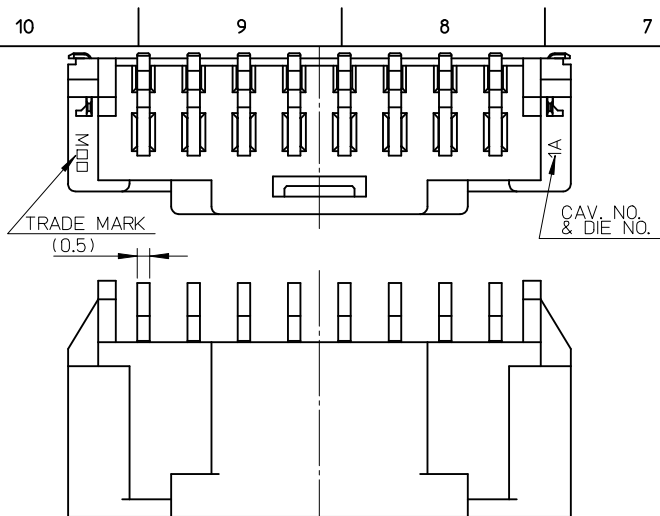
Contact us

Tel: +86-755-8981 8866 Fax: +86-755-8427 6832

Email & Skype: info@chipsmall.com Web: www.chipsmall.com

Address: A1208, Overseas Decoration Building, #122 Zhenhua RD., Futian, Shenzhen, China



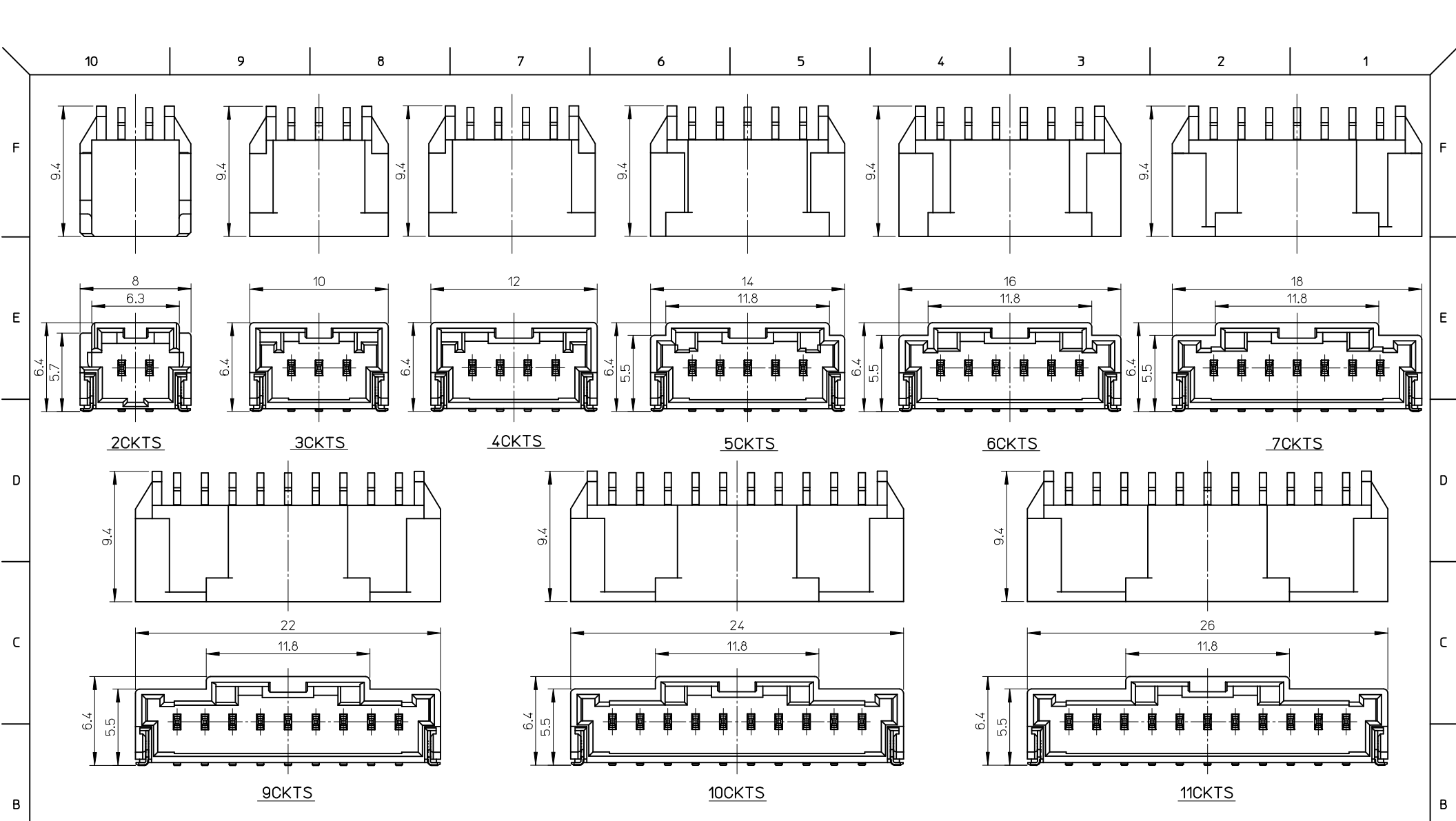


注記 NOTES

- 材質
ハウジング: 耐熱性ナイロン UL94V-0
ピン: 銅合金、ニッケル下地、錫メッキ、金メッキ
フィッティングネール: 銅合金、ニッケル下地、錫メッキ
MATERIAL
HOUSING: POLYAMIDE UL94V-0
PIN: COPPER ALLOY, GOLD OR TIN OVER NICKEL PLATE.
FITTING NAIL: COPPER ALLOY, TIN OVER NICKEL PLATE.
- 色: ナチュラル、黒、赤、青
COLOR: NATURAL, BLACK, RED, BLUE
- 嵌合相手
ハウジング: 502351-**0*
錫メッキ端子: 50212-8*00, 50372-8*00, 560085-0101
金メッキ端子: 56161-8*81
MATES WITH
HOUSING: 502351-**0*
SN PLATING TERMINAL: 50212-8*00, 50372-8*00, 560085-0101
AU PLATING TERMINAL: 56161-8*81
- エンボス梱包品の詳細はSD-502352-002参照
DETAILED TAPING PACKAGE, SEE SD-502352-002.
- ELV及びRoHS適合
ELV AND RoHS COMPLIANT
- 半田付け面のコプラナリティ: 0.1mm MAX.
CO-PLANARITY OF SOLDERING TAILS TO BE 0.1mm MAX.

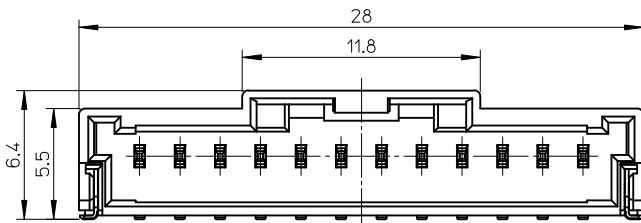
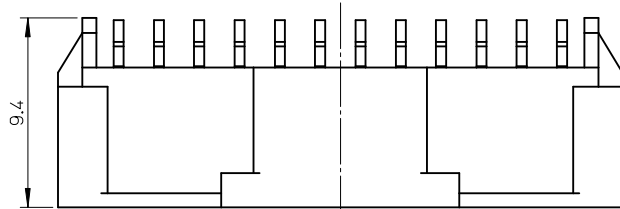
- 一般公差
GENERAL TOLERANCES
10 UNDER: 0.2
10 OVER 30 UNDER: 0.25
30 OVER: 0.3
ANGULAR: ±3°

REVISED EC NO: JTR2016-0015 DR: WNK/MAGAI02 2016/03/04 CHK: D: HKOMATSU 2016/03/04 APPR: MAYAMAMOTO 2016/03/08	QUALITY SYMBOLS △E/A=0 △E/B=0 △E/C=0	GENERAL TOLERANCES (UNLESS SPECIFIED)		DIMENSION STYLE MM ONLY		SCALE 5:1	DESIGN UNITS METRIC	THIRD ANGLE PROJECTION		
		mm	INCH	DRAWN BY SHSHIBATA	DATE 2007/12/18	TITLE 2.0MM PITCH W/B CONN. WAFER ASSY R/A SMT				
		4 PLACES ± --- ± ---	3 PLACES ± --- ± ---	CHECKED BY HKOMATSU	DATE 2007/12/18	DOCUMENT NO. SD-502352-001				
		2 PLACES ± --- ± ---	1 PLACE ± --- ± ---	APPROVED BY AKANESHIGE	DATE 2007/12/18					
0 PLACE ± --- ± ---	ANGULAR ± - °		DRAFT WHERE APPLICABLE MUST REMAIN WITHIN DIMENSIONS		THIS DRAWING CONTAINS INFORMATION THAT IS PROPRIETARY TO MOLEX INCORPORATED AND SHOULD NOT BE USED WITHOUT WRITTEN PERMISSION					

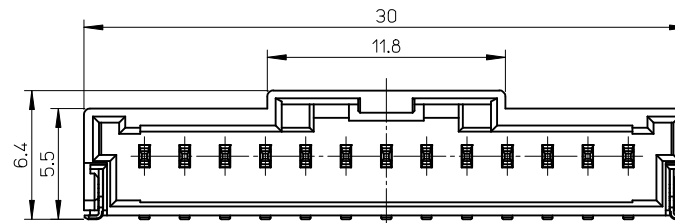
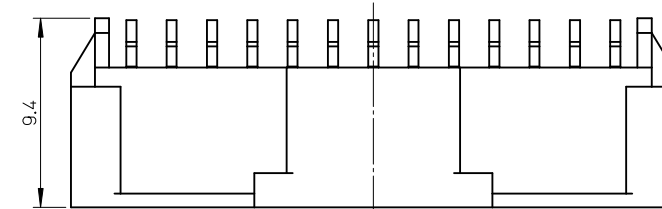


REVISED EC NO: JTR2016-0015 DRWN:KNAGA I02 2016/03/01 CHKD:HKOMATSU 2016/03/04 APPR:MATAMAMOTO 2016/03/08	QUALITY SYMBOLS $\nabla = 0$ $\nabla = 0$ $\nabla = 0$	GENERAL TOLERANCES (UNLESS SPECIFIED)		DIMENSION STYLE MM ONLY	SCALE 4:1	DESIGN UNITS METRIC	THIRD ANGLE PROJECTION
		4 PLACES ± --- ± --- 3 PLACES ± --- ± --- 2 PLACES ± --- ± --- 1 PLACE ± --- ± --- 0 PLACE ± --- ± ---	mm INCH	DRAWN BY DATE SHSHIBATA 2007/12/18	TITLE 2.0MM PITCH W/B CONN. WAFER ASSY R/A SMT		
		ANGULAR ± - ° DRAFT WHERE APPLICABLE MUST REMAIN WITHIN DIMENSIONS	MATERIAL NO.	CHECKED BY DATE HKOMATSU 2007/12/18	molex		
		SEE CHART	APPROVED BY DATE AKANESHIGE 2007/12/18	DOCUMENT NO. SD-502352-001	SHEET NO. 2 OF 4		

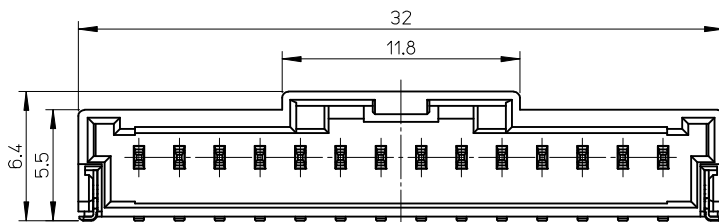
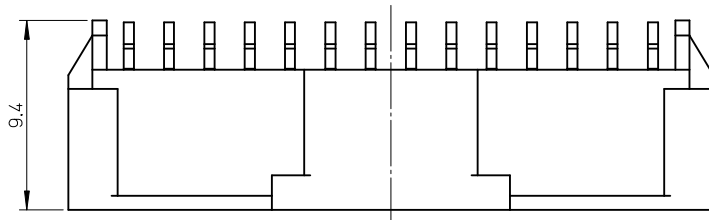
10 9 8 7 6 5 4 3 2 1



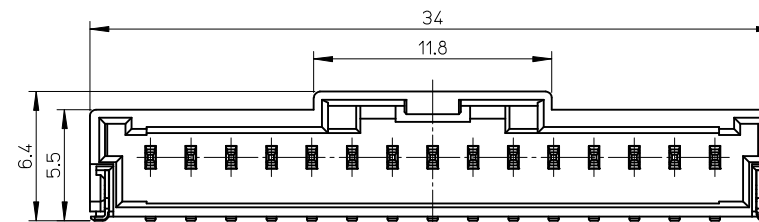
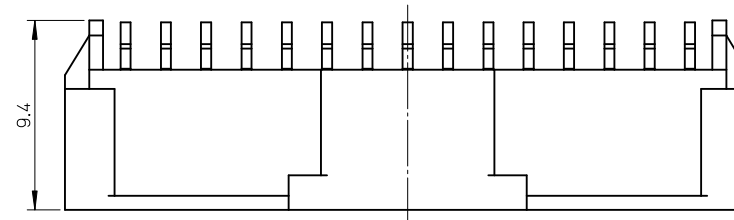
12CKTS



13CKTS



14CKTS



15CKTS

REVISED EC NO: JTR2016-0015 DRW:KNAGA I02 2016/03/01 CHK:D-HKOMATSU 2016/03/04 APPR:MIYAMOTO 2016/03/08	QUALITY SYMBOLS F/S = 0 F/G = 0 F/P = 0	GENERAL TOLERANCES (UNLESS SPECIFIED)		DIMENSION STYLE MM ONLY	SCALE 4:1	DESIGN UNITS METRIC	THIRD ANGLE PROJECTION		
		4 PLACES ± --- ± ---	3 PLACES ± --- ± ---	2 PLACES ± --- ± ---	1 PLACE ± --- ± ---	0 PLACE ± ±	TITLE 2.0MM PITCH W/B CONN. WAFER ASSY R/A SMT		
		ANGULAR ± - °		DRAFT WHERE APPLICABLE MUST REMAIN WITHIN DIMENSIONS		DRAWN BY SHSHIBATA	DATE 2007/12/18	DOCUMENT NO. SD-502352-001	
		SEE CHART		MATERIAL NO. AKANESHIGE 2007/12/18		SHEET NO. 3 OF 4			

9 8 7 6 5 4 3 2 1

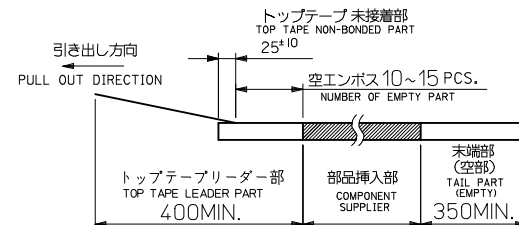
	10	9	8	7	6	5	4	3	2	1						
F	Sn NATURAL	34.0	502352-1500	15	Au NATURAL	34.0	502352-1510	15								
		32.0	502352-1400	14		32.0	502352-1410	14								
		30.0	502352-1300	13		30.0	502352-1310	13								
		28.0	502352-1200	12		28.0	502352-1210	12								
		26.0	502352-1100	11		26.0	502352-1110	11								
		24.0	502352-1000	10		24.0	502352-1010	10								
		22.0	502352-0900	9		22.0	502352-0910	9								
		20.0	502352-0800	8		20.0	502352-0810	8								
		18.0	502352-0700	7		18.0	502352-0710	7								
		16.0	502352-0600	6		16.0	502352-0610	6								
E		14.0	502352-0500	5		14.0	502352-0510	5								
		12.0	502352-0400	4		12.0	502352-0410	4								
		10.0	502352-0300	3		10.0	502352-0310	3								
		8.0	502352-0200	2		8.0	502352-0210	2								
		PLATING COLOR	A	EMBOSSED PACKAGE ORDER NO.		CKTS	PLATING COLOR	A			EMBOSSED PACKAGE ORDER NO.	CKTS				
		CONNECTOR SERIES NO. 502352-**08				CONNECTOR SERIES NO. 502352-**18										

D	Sn BLACK			15	Sn RED			15	Sn BLUE			15						
				14				14				14						
				13				13				13						
				12				12				12						
				11				11				11						
				10				10				10						
				9				9				9						
		20.0	502352-0801	8		20.0	502352-0802	8		20.0	502352-0803	8						
		18.0	502352-0701	7				7				7						
		16.0	502352-0601	6		16.0	502352-0602	6		16.0	502352-0603	6						
C		14.0	502352-0501	5				5										
		12.0	502352-0401	4		12.0	502352-0402	4					12.0	502352-0403	4			
		10.0	502352-0301	3		10.0	502352-0302	3					10.0	502352-0303	3			
		8.0	502352-0201	2		8.0	502352-0202	2					8.0	502352-0203	2			
		PLATING COLOR	A	EMBOSSED PACKAGE ORDER NO.		CKTS	PLATING COLOR	A					EMBOSSED PACKAGE ORDER NO.	CKTS	PLATING COLOR	A	EMBOSSED PACKAGE ORDER NO.	CKTS
		CONNECTOR SERIES NO. 502352-**28				CONNECTOR SERIES NO. 502352-**48							CONNECTOR SERIES NO. 502352-**68					

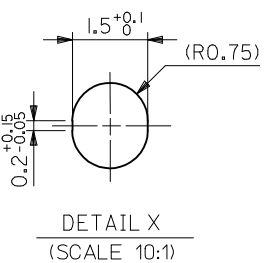
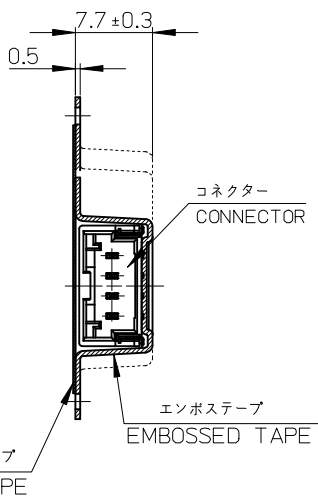
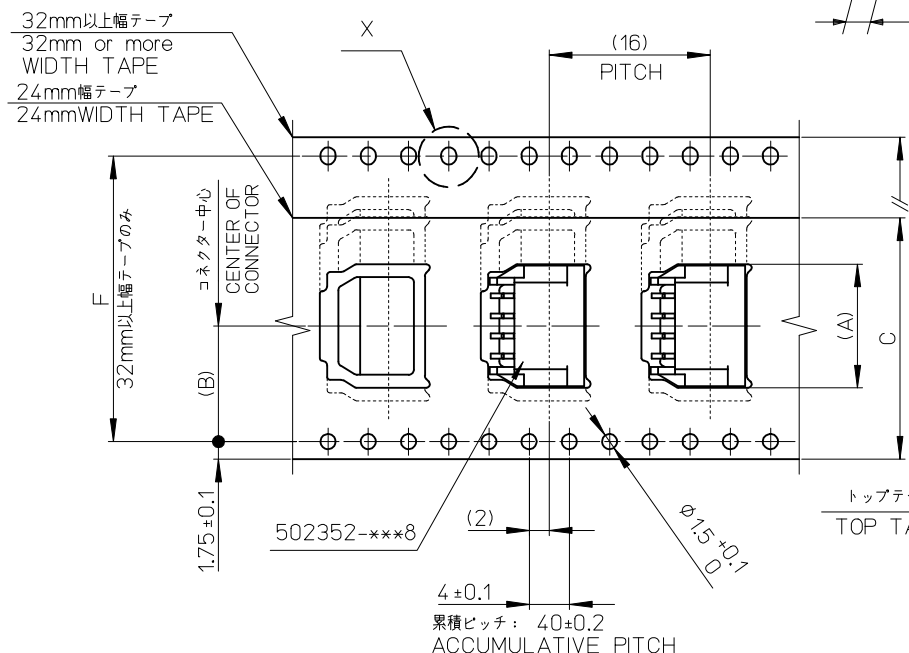
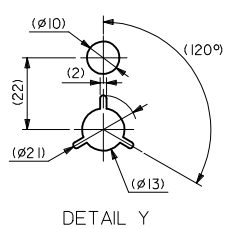
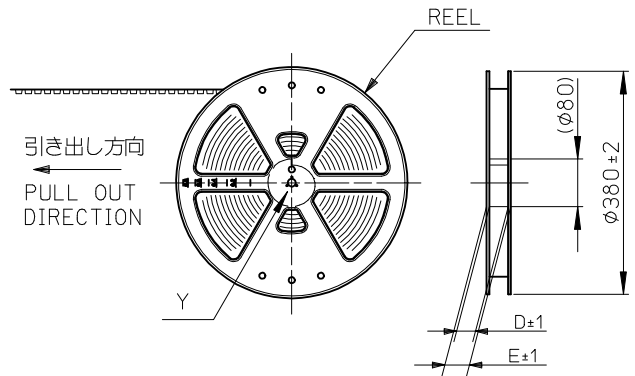
A	REVISED	EC NO: JTR2016-0015	QUALITY SYMBOLS	GENERAL TOLERANCES (UNLESS SPECIFIED)	DIMENSION STYLE MM ONLY	SCALE 5:1	DESIGN UNITS METRIC	THIRD ANGLE PROJECTION	TITLE 2.0MM PITCH W/B CONN. WAFER ASSY R/A SMT	DOCUMENT NO. SD-502352-001	SHEET NO. 4 OF 4			
		DRW:KANAGA 02 2016/03/01										4 PLACES ± --- ± ---	DRAWN BY SHSHIBATA	DATE 2007/12/18
		CHKD:HKOMATSU 2016/03/04										3 PLACES ± --- ± ---	CHECKED BY HKOMATSU	DATE 2007/12/18
		APPR:MIYAMOTO 2016/03/08										2 PLACES ± --- ± ---	APPROVED BY AKANESHIGE	DATE 2007/12/18
			1 PLACE ± --- ± ---	0 PLACE ± ±	ANGULAR ± - °	DRAFT WHERE APPLICABLE MUST REMAIN WITHIN DIMENSIONS		SIZE A3	THIS DRAWING CONTAINS INFORMATION THAT IS PROPRIETARY TO MOLEX INCORPORATED AND SHOULD NOT BE USED WITHOUT WRITTEN PERMISSION					

注記
NOTES

- 製品番号
 ナチュラル・錫めっき: 502352-**00
 ナチュラル・金めっき: 502352-**10
 黒・錫めっき: 502352-**01
 赤・錫めっき: 502352-**02
 青・錫めっき: 502352-**03
 詳細寸法については、製品単体図面を参照下さい。
 PART NO.
 NATURAL Sn Plating: 502352-**00
 NATURAL Au Plating: 502352-**10
 BLACK Sn Plating: 502352-**01
 RED Sn Plating: 502352-**02
 BLUE Sn Plating: 502352-**03
 SEE SALES DRAWING FOR CONNECTOR
- 梱包数量: 700個/リール
 NUMBER OF CONNECTORS 700PCS/REEL
- リードテープ長さ
 LEAD TAPE LENGHT



- 材料
 MATERIAL
 キャリアテープ: ポリスチレン
 CARRIER TAPE: POLYSTYRENE
 トップテープ: PET, PE, PEF
 TOP TAPE: PET, PE, PEF
 リール: ポリスチレン
 REEL: POLYSTYRENE
- 一般降参
 GENERAL TOLERANCES
 10 UNDER: 0.2
 10 OVER 30 UNDER: 0.25
 30 OVER: 0.3
 ANGULAR: ±1°



引き出し方向
PULL OUT DIRECTION

エンボステープ内の製品の向き
DIRECTION OF CONNECTOR
IN EMBOSSED TAPE

REVISED EC NO: JTR2016-0015 DRWN:KNAGAI02 2016/03/01 CHKD:HKOMATSU 2016/03/04 APPR: MAYAMAMOTO 2016/03/08	DESCRIPTION REV	QUALITY SYMBOLS ▽=0 ▽=1 ▽=2		GENERAL TOLERANCES (UNLESS SPECIFIED)		DIMENSION STYLE MM ONLY		SCALE	DESIGN UNITS METRIC	THIRD ANGLE PROJECTION	
		4 PLACES ± --- ± ---	3 PLACES ± --- ± ---	2 PLACES ± --- ± ---	1 PLACE ± --- ± ---	0 PLACE ± --- ± ---	mm	INCH	DRAWN BY SHSHIBATA	DATE 2007/6/6	TITLE 2.0MM PITCH W/B CONN. WAFER ASSY EMBOSSED TAPE PACKAGE
DRAFT WHERE APPLICABLE MUST REMAIN WITHIN DIMENSIONS				ANGULAR ± °		SEE CHART		MATERIAL NO. MAYAMAMOTO 2012/03/14		DOCUMENT NO. SD-502352-002	SHEET NO. 1 OF 2

