



Chipsmall Limited consists of a professional team with an average of over 10 year of expertise in the distribution of electronic components. Based in Hongkong, we have already established firm and mutual-benefit business relationships with customers from,Europe,America and south Asia,supplying obsolete and hard-to-find components to meet their specific needs.

With the principle of "Quality Parts,Customers Priority,Honest Operation,and Considerate Service",our business mainly focus on the distribution of electronic components. Line cards we deal with include Microchip,ALPS,ROHM,Xilinx,Pulse,ON,Everlight and Freescale. Main products comprise IC,Modules,Potentiometer,IC Socket,Relay,Connector.Our parts cover such applications as commercial,industrial, and automotives areas.

We are looking forward to setting up business relationship with you and hope to provide you with the best service and solution. Let us make a better world for our industry!



Contact us

Tel: +86-755-8981 8866 Fax: +86-755-8427 6832

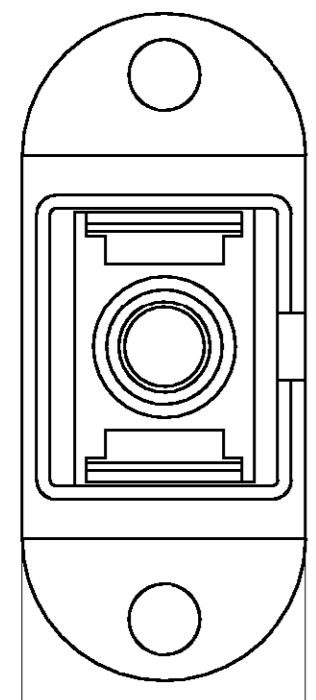
Email & Skype: info@chipsmall.com Web: www.chipsmall.com

Address: A1208, Overseas Decoration Building, #122 Zhenhua RD., Futian, Shenzhen, China

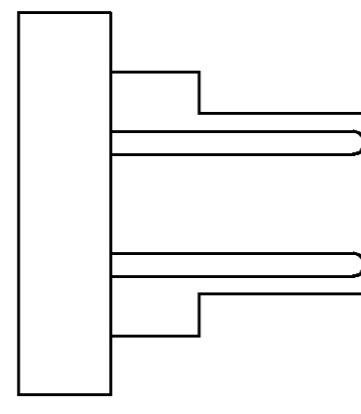


THIS DRAWING IS UNPUBLISHED. RELEASED FOR PUBLICATION .19
 © COPYRIGHT 19 BY AMP INCORPORATED. ALL RIGHTS RESERVED.

LOC	DIST	REVISIONS			
P	LTR	DESCRIPTION	DATE	DWN	APVD
CE	16	H	REVISED PER 00B0-0301-01	22JUN2001	TA 5B

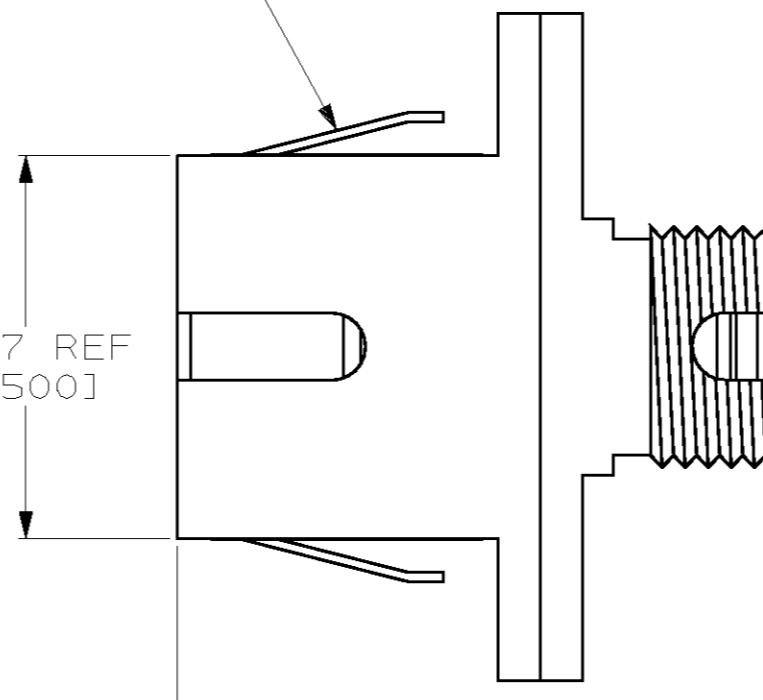


9.3 [.366] REF

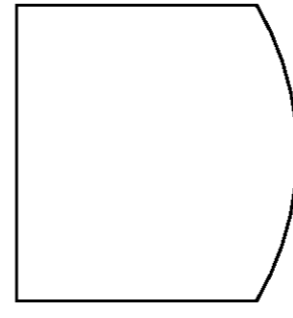


RETENTION CLIP

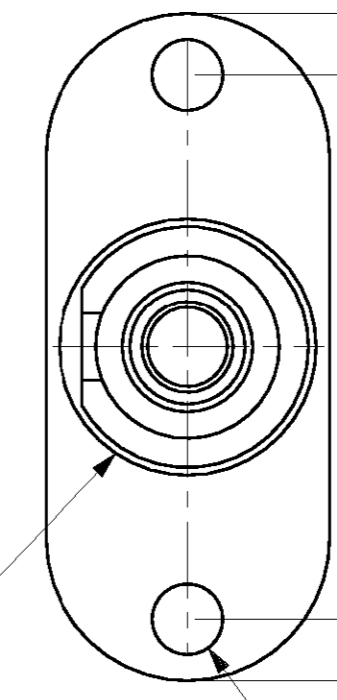
12.7 REF [.500]



21.21 [.835] REF



M8 X 0.75 6g

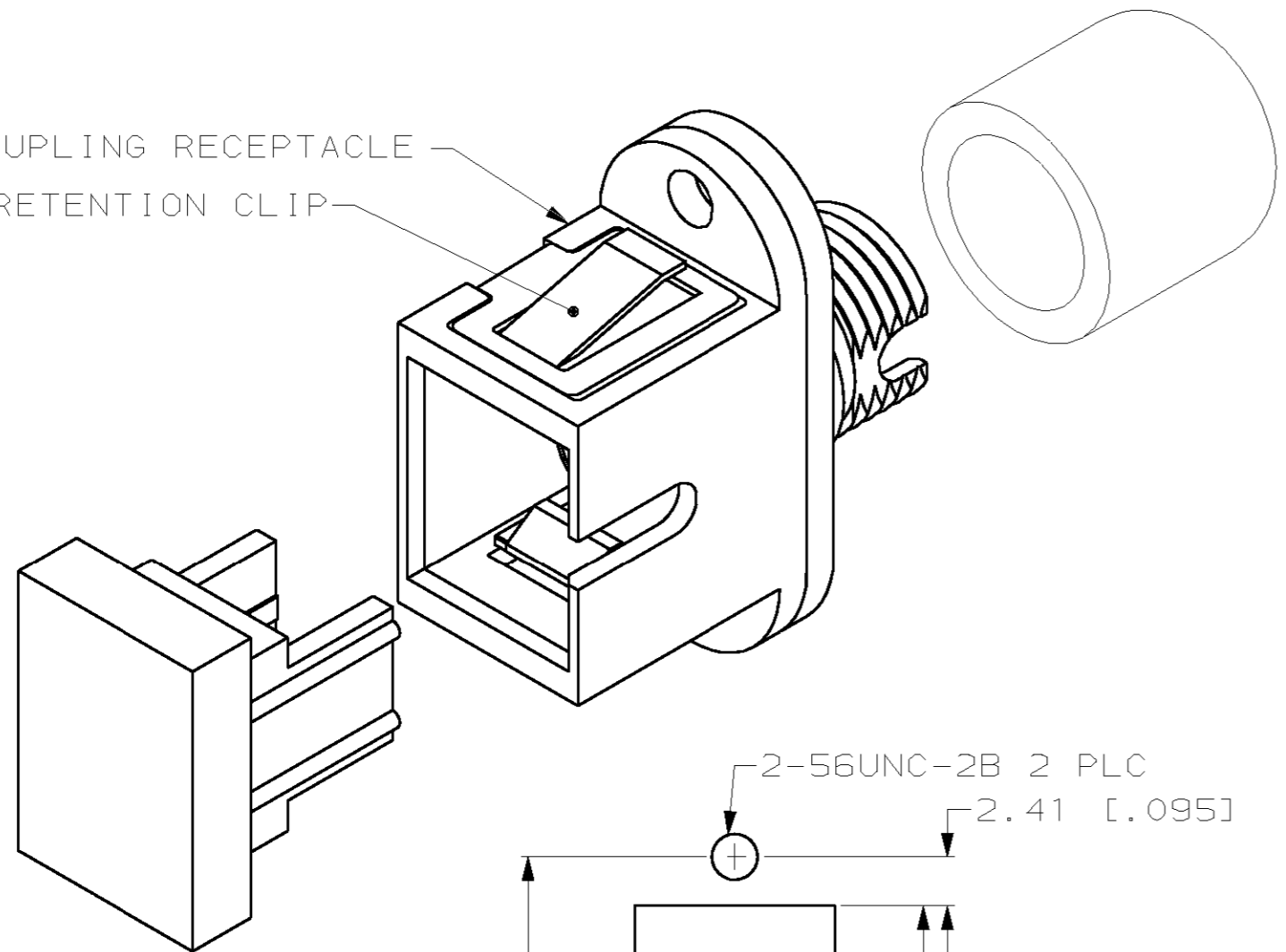


18.03 REF [.710]

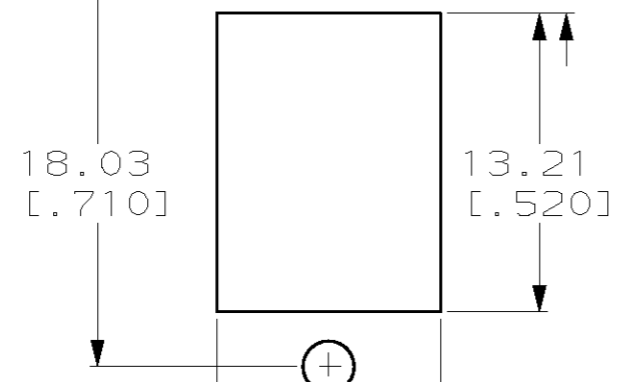
22.1 REF [.870]

ø2.34 [.092] REF 2 PLC

COUPLING RECEPTACLE
RETENTION CLIP



2-56UNC-2B 2 PLC
2.41 [.095]



18.03 [.710]
13.21 [.520]
4.95 [.195]
9.91 [.390]

SUGGESTED PANEL CUTOUT 4

- 1 MATERIAL:
 BODY: THERMOPLASTIC
 RETENTION CLIP: STAINLESS STEEL
 SLEEVE: PHOSPHOR BRONZE
 SLEEVE: ZIRCONIA
 DUST COVER: VINYL
 DUST COVER: THERMOPLASTIC ELASTOMER
- 2. DIMENSIONS IN [] ARE IN INCHES.
- 3 BULK PACKAGE, 50 PIECES.
- 4 RECOMMENDED PANEL THICKNESS 1.60±.10 [.063±.004].

INCLUDED HARDWARE	COLOR	ALIGNMENT SLEEVE	PART NUMBER
NONE	BLACK	CERAMIC	1-502781-4
NONE	BLACK	METAL	1-502781-3
RETENTION CLIP	BEIGE	CERAMIC	1-502781-2
RETENTION CLIP	BLUE	CERAMIC	1-502781-1
RETENTION CLIP	BLACK	CERAMIC	1-502781-0
RETENTION CLIP	BEIGE	METAL	502781-9
RETENTION CLIP	BLUE	METAL	502781-8
RETENTION CLIP	BLACK	METAL	502781-7
RETENTION CLIP	BEIGE	CERAMIC	502781-6
RETENTION CLIP	BLUE	CERAMIC	502781-5
RETENTION CLIP	BLACK	CERAMIC	502781-4
RETENTION CLIP	BEIGE	METAL	502781-3
RETENTION CLIP	BLUE	METAL	502781-2
RETENTION CLIP	BLACK	METAL	502781-1

THIS DRAWING IS A CONTROLLED DOCUMENT.		DWN R.R.SCHAFFER 13JAN98	AMP AMP Incorporated Harrisburg, PA 17105-3608
		CHK D.MULHOLLAND 13JAN98	
DIMENSIONS: mm [INCHES]		APVD J.EBERLE 13JAN98	AMP SC-FC TYPE COUPLING RECEPTACLE, 2.5mm, HYBRID SERIES
TOLERANCES UNLESS OTHERWISE SPECIFIED: 0 PLC ±- 1 PLC ±- 2 PLC ±- 3 PLC ±- 4 PLC ±- ANGLES ±- FINISH -		PRODUCT SPEC - APPLICATION SPEC - WEIGHT -	
MATERIAL 1		SCALE 4:1	RESTRICTED TO -
CUSTOMER DRAWING		SHEET 1 OF 1	REV H

502781

A