



Chipsmall Limited consists of a professional team with an average of over 10 year of expertise in the distribution of electronic components. Based in Hongkong, we have already established firm and mutual-benefit business relationships with customers from,Europe,America and south Asia,supplying obsolete and hard-to-find components to meet their specific needs.

With the principle of “Quality Parts,Customers Priority,Honest Operation,and Considerate Service”,our business mainly focus on the distribution of electronic components. Line cards we deal with include Microchip,ALPS,ROHM,Xilinx,Pulse,ON,Everlight and Freescale. Main products comprise IC,Modules,Potentiometer,IC Socket,Relay,Connector.Our parts cover such applications as commercial,industrial, and automotives areas.

We are looking forward to setting up business relationship with you and hope to provide you with the best service and solution. Let us make a better world for our industry!



Contact us

Tel: +86-755-8981 8866 Fax: +86-755-8427 6832

Email & Skype: info@chipsmall.com Web: www.chipsmall.com

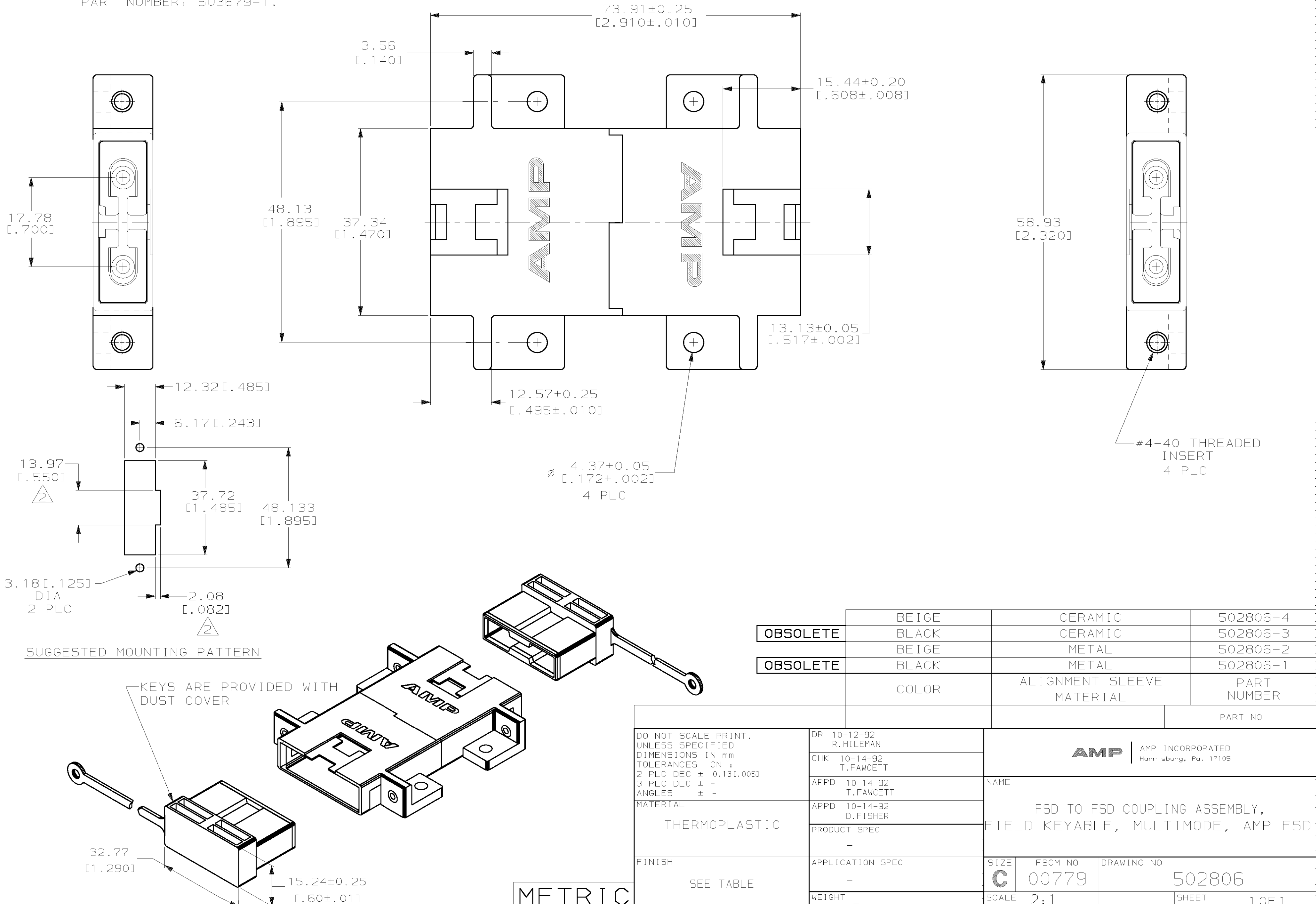
Address: A1208, Overseas Decoration Building, #122 Zhenhua RD., Futian, Shenzhen, China



THIS DRAWING IS UNPUBLISHED. RELEASED FOR PUBLICATION
 © COPYRIGHT 19 BY AMP INCORPORATED. ALL INTERNATIONAL RIGHTS RESERVED.

LOC		DIST		P		F		ZONE		LTR		REVISIONS		
CE		16								C		DESCRIPTION	DATE	APPD
												REVISED PER 0A00-0124-00	22JAN2001	TA/SB

- 1. DIMENSIONS IN [] ARE IN INCHES.
- 2. OPTIONAL CUTOUT FOR FIELD KEY INSERTION AND REMOVAL. KEY EXTRACTION TOOL PART NUMBER: 503679-1.



OBSOLETE	BEIGE	CERAMIC	502806-4
OBSOLETE	BLACK	CERAMIC	502806-3
	BEIGE	METAL	502806-2
	BLACK	METAL	502806-1
	COLOR	ALIGNMENT SLEEVE MATERIAL	PART NUMBER

DO NOT SCALE PRINT. UNLESS SPECIFIED DIMENSIONS IN mm TOLERANCES ON : 2 PLC DEC ± 0.13[.005] 3 PLC DEC ± - ANGLES ± -		DR 10-12-92 R.HILEMAN		AMP AMP INCORPORATED Harrisburg, Pa. 17105	
MATERIAL THERMOPLASTIC		CHK 10-14-92 T.FAWCETT			
FINISH SEE TABLE		APPD 10-14-92 T.FAWCETT		NAME	
		APPD 10-14-92 D.FISHER		FSD TO FSD COUPLING ASSEMBLY, FIELD KEYABLE, MULTIMODE, AMP FSD	
		PRODUCT SPEC -		SIZE C	
		APPLICATION SPEC -		FSCM NO 00779	
		WEIGHT -		DRAWING NO 502806	
				SCALE 2:1	
				SHEET 1 OF 1	