



Chipsmall Limited consists of a professional team with an average of over 10 year of expertise in the distribution of electronic components. Based in Hongkong, we have already established firm and mutual-benefit business relationships with customers from,Europe,America and south Asia,supplying obsolete and hard-to-find components to meet their specific needs.

With the principle of "Quality Parts,Customers Priority,Honest Operation,and Considerate Service",our business mainly focus on the distribution of electronic components. Line cards we deal with include Microchip,ALPS,ROHM,Xilinx,Pulse,ON,Everlight and Freescale. Main products comprise IC,Modules,Potentiometer,IC Socket,Relay,Connector.Our parts cover such applications as commercial,industrial, and automotives areas.

We are looking forward to setting up business relationship with you and hope to provide you with the best service and solution. Let us make a better world for our industry!



## Contact us

Tel: +86-755-8981 8866 Fax: +86-755-8427 6832

Email & Skype: info@chipsmall.com Web: www.chipsmall.com

Address: A1208, Overseas Decoration Building, #122 Zhenhua RD., Futian, Shenzhen, China



4

3

2

1

REVISIONS		
LTR	DESCRIPTION	DATE
G	REVISED PER ECO-10-016894	08/16/2010
G1	REVISED PER ECO-11-017227	08/16/2011

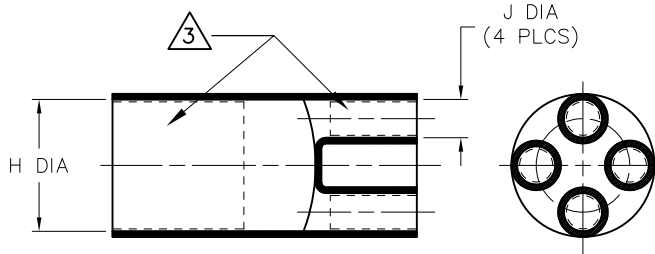
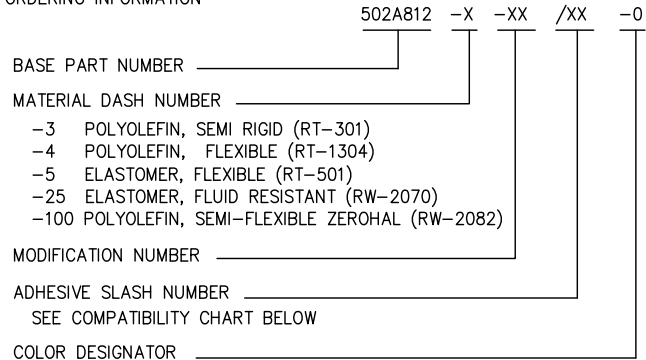
NOTES

- ALL DIMENSIONS ARE IN INCHES  
[MILLIMETERS]
- DIMENSIONS APPEARING IN TABLE ARE AS FOLLOWS:  
a - AS SUPPLIED  
b - AFTER UNRESTRICTED RECOVERY

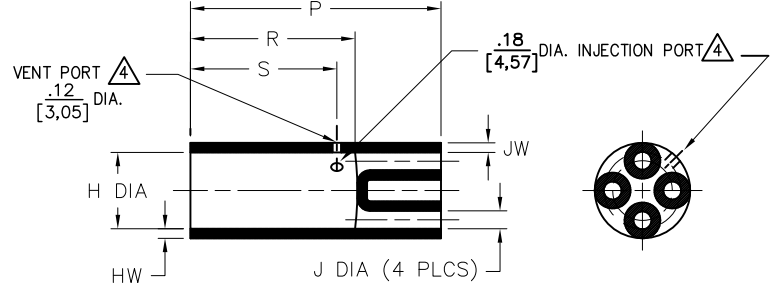
3. COATING (ADHESIVE): IS OPTIONAL. AS SUPPLIED DIMENSIONS APPEARING IN TABLE ARE FOR UNCOATED PARTS. WHEN COATING IS ADDED, ENTRY DIAMETER WILL BE REDUCED BY .06 [1.5] MAX.

4. MOLDING PORTS ARE OPTIONAL. WHEN -00 MODIFICATION NUMBER IS SPECIFIED MOLDING PORTS WILL BE LOCATED AS SHOWN.

ORDERING INFORMATION



AS SUPPLIED



AFTER UNRESTRICTED RECOVERY

TABLE OF DIMENSIONS

PART DESCRIPTION	H		J		P	R	S	HW	JW
	MIN a	MAX b	MIN a	MAX b	±10% b	±10% b	REF b	±20% b	±20% b
502A812	.90 [22,8]	.47 [11,9]	.28 [7,1]	.11 [2,8]	2.75 [69,8]	2.00 [50,8]	1.75 [44,4]	.17 [4,3]	.05 [1,3]
502A823	1.35 [34,3]	.80 [20,3]	.48 [12,2]	.19 [4,8]	3.50 [88,9]	2.50 [63,5]	2.25 [57,1]	.11 [2,8]	.09 [2,3]
502A834	2.05 [52,1]	1.09 [27,7]	.80 [20,3]	.28 [7,1]	4.25 [107,9]	3.00 [76,2]	2.75 [69,8]	.30 [7,6]	.16 [4,1]
502A845	3.30 [83,8]	1.73 [43,9]	1.42 [36,0]	.50 [12,7]	5.00 [127,0]	3.50 [88,9]	3.25 [82,5]	.12 [3,0]	.12 [3,0]

If this document is printed it becomes uncontrolled. Check for the latest revision

Raychem Molded Parts  
CUSTOMER DRAWING

COMPATIBILITY CHART

MATERIAL DASH NO.	ADHESIVE (COATING) SLASH NUMBER	ADHESIVE (COATING) S NUMBER
-3	/42; /86	S-1017; S-1048
-4	/42; /86	S-1017; S-1048
-5	N/A	N/A
-25	/86; /225	S-1048; S-1206
-100	/180	S-1030

UNLESS OTHERWISE SPECIFIED DIMENSIONS ARE INCHES. METRIC DIMENSIONS ARE IN BRACKETS.

DECIMAL TOLERANCES  
.XXX ± 0.005 [0.13 mm]  
.XX ± 0.01 [0.25 mm]  
.X ± 0.1 [0.50 mm]

ANGLE TOLERANCE  
.X ± 1 DEG.

DRAWN  
UNGUYN

APPROVED  
DHURRELL



TE Connectivity

TITLE  
TRANSITION, 1 TO 4



SIZE B CODE IDENT. NO. 06090 DWG. NO. 502A812thru845

4

3

2

1