



Chipsmall Limited consists of a professional team with an average of over 10 year of expertise in the distribution of electronic components. Based in Hongkong, we have already established firm and mutual-benefit business relationships with customers from,Europe,America and south Asia,supplying obsolete and hard-to-find components to meet their specific needs.

With the principle of “Quality Parts,Customers Priority,Honest Operation,and Considerate Service”,our business mainly focus on the distribution of electronic components. Line cards we deal with include Microchip,ALPS,ROHM,Xilinx,Pulse,ON,Everlight and Freescale. Main products comprise IC,Modules,Potentiometer,IC Socket,Relay,Connector.Our parts cover such applications as commercial,industrial, and automotives areas.

We are looking forward to setting up business relationship with you and hope to provide you with the best service and solution. Let us make a better world for our industry!



Contact us

Tel: +86-755-8981 8866 Fax: +86-755-8427 6832

Email & Skype: info@chipsmall.com Web: www.chipsmall.com

Address: A1208, Overseas Decoration Building, #122 Zhenhua RD., Futian, Shenzhen, China



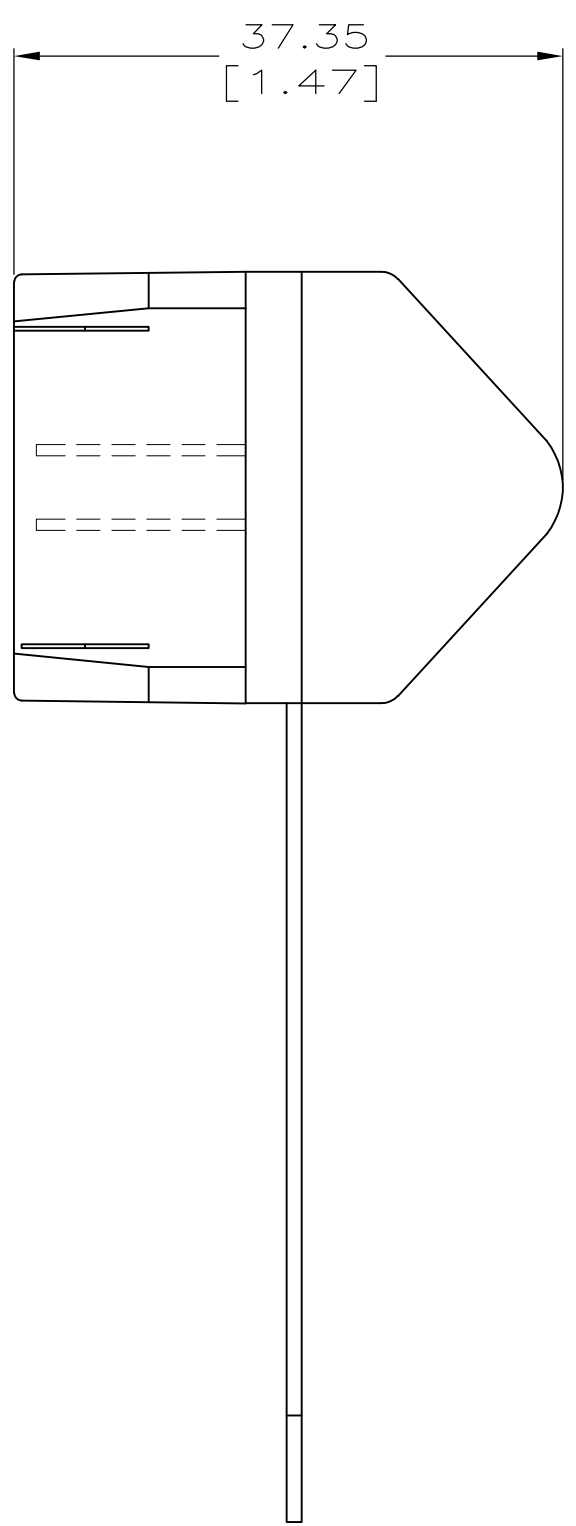
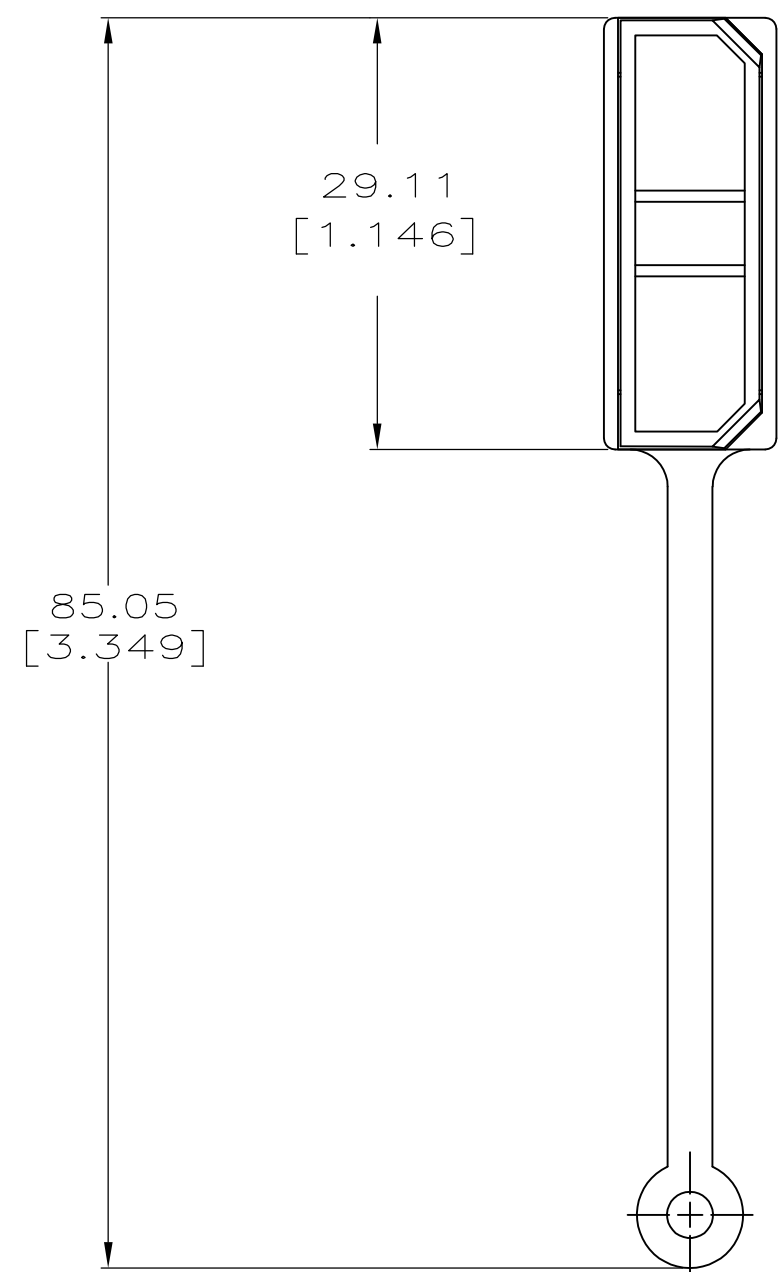
LOC	DIST	P	F	ZONE	LTR	DESCRIPTION	DATE	APPD
CE	16				C	REV PER 0A00-0032-98	19JAN98	JNS/KM
					CI	REVISED PER ECO-09-020932	07SEP09	AEG

D

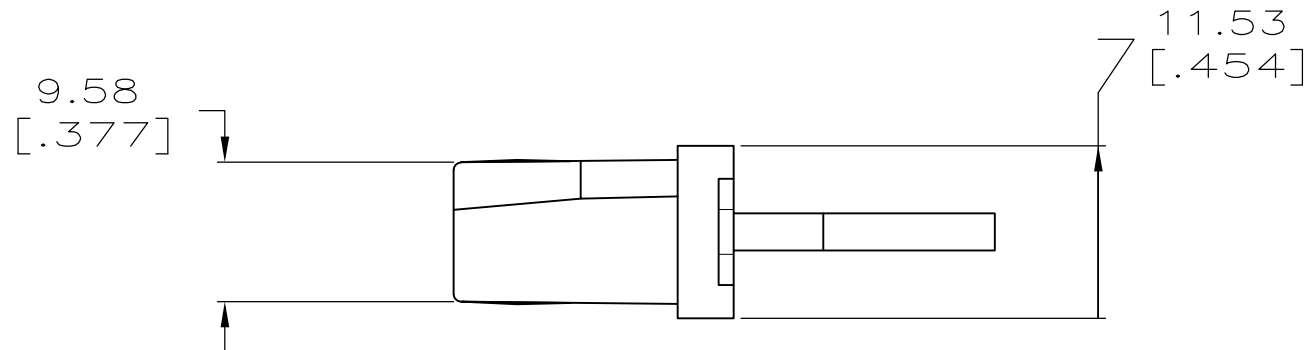
C

B

A



- 1 SEE RESTRICTED CUSTOMER DRAWING 503004-5.
- 2 OBSOLETE PARTS: OBSOLETE CIS STREAMLINING PER D.RENAUD/D.SINISI



OBSOLETE	COLOR	DESCRIPTION	PART NUMBER
1	-	WITH MOUNTING STRAP	503004-5
2	BLACK	WITH MOUNTING STRAP	503004-4
	BLACK	W/O MOUNTING STRAP	503004-3
	BEIGE	WITH MOUNTING STRAP	503004-2
	BEIGE	W/O MOUNTING STRAP	503004-1

DO NOT SCALE PRINT. UNLESS SPECIFIED DIMENSIONS IN mm [INCHES] TOLERANCES ON : 1 PLC DEC ± 0.25 [.01] 2 PLC DEC ± 0.13 [.005] ANGLES ± -		DR 4-9-92 R.HILEMAN		AMP Incorporated Harrisburg, PA 17105-3608	
MATERIAL ARNITEL		CHK 4-9-92 B.BRIGGS			
FINISH -		APPD 4-27-92 W.SAVITSKY		NAME RECEPTACLE DUST COVER, RSD	
		APPD 4-27-92 R.WEBER		PRODUCT SPEC -	
		APPLICATION SPEC -		SIZE C	CAGE CODE 00779
		WEIGHT -		SCALE 2:1	DRAWING NO 503004
					SHEET 1 OF 1

D

C

B

A

503004