



Chipsmall Limited consists of a professional team with an average of over 10 year of expertise in the distribution of electronic components. Based in Hongkong, we have already established firm and mutual-benefit business relationships with customers from,Europe,America and south Asia,supplying obsolete and hard-to-find components to meet their specific needs.

With the principle of “Quality Parts,Customers Priority,Honest Operation,and Considerate Service”,our business mainly focus on the distribution of electronic components. Line cards we deal with include Microchip,ALPS,ROHM,Xilinx,Pulse,ON,Everlight and Freescale. Main products comprise IC,Modules,Potentiometer,IC Socket,Relay,Connector.Our parts cover such applications as commercial,industrial, and automotives areas.

We are looking forward to setting up business relationship with you and hope to provide you with the best service and solution. Let us make a better world for our industry!



Contact us

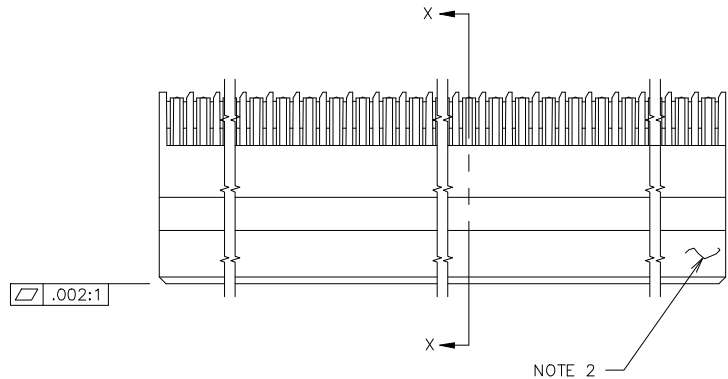
Tel: +86-755-8981 8866 Fax: +86-755-8427 6832

Email & Skype: info@chipsmall.com Web: www.chipsmall.com

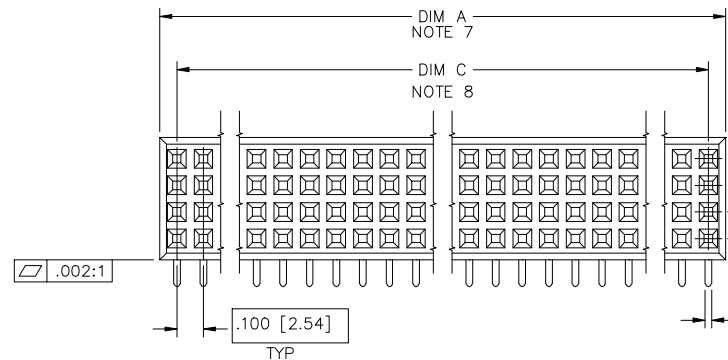
Address: A1208, Overseas Decoration Building, #122 Zhenhua RD., Futian, Shenzhen, China



PRODUCT NUMBER
SEE TABLE



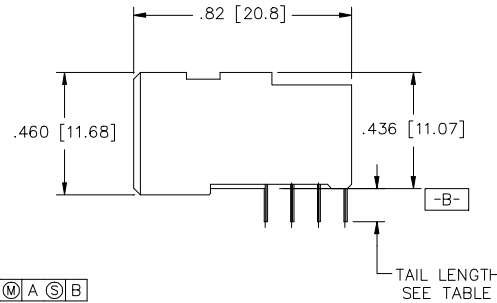
NOTE 2



TYP

.025 [.63]

ϕ .020/.51 $\text{\textcircled{M}}$ A $\text{\textcircled{C}}$ B
AT TIPS



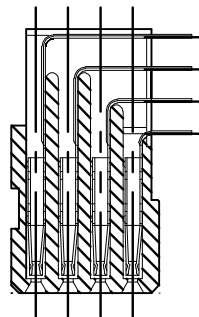
TAIL LENGTH
SEE TABLE

mat'l. code NOTE 4				surface ISO 1302	tolerance ISO 406 ISO 1101	projection ISO 1101	product family HPC
ltr	ecn no	dr	date	tolerances unless otherwise specified		INCH/MM	title 4 ROW R/A RECEPTACLE CARD CONN. STYLE, S.T.B. 0 G.P.
H	V31950	PDP	11/11/95	angles	XX±.01/XX±.03		
J	V90157	HTB	2/19/99	linear	XXX±.006/XX±.013	scale 1:1	dwg no 50351 sheet 1 of 3 size A3
K	V00256	JWS	1/20/00	$\sigma \pm 2'$	XXXX±.0020/XXX±.0051		
L	V02769	LSS	11/21/00	dr	D. INGRAM	7/19/05	type Product Customer Drawing
M	V05-0474	DAI	7/19/05	engr	D. HORCHLER	7/19/05	
N	M06-0255	AEA	7/07/06	chr	T. BREWBKER	7/19/05	
P	M08-0280	AGS	9/30/08	appd	D. HORCHLER	7/19/05	
sheet	revision	P	P	P			
index	sheet	1	2	3			



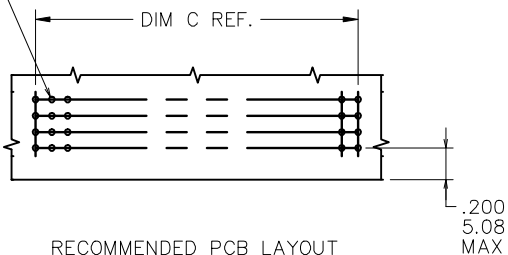
Copyright FCI

PRODUCT NUMBER
SEE TABLE



SECTION X-X

$\varnothing .040 \pm .003 [1.02 \pm .08]$
TYP



RECOMMENDED PCB LAYOUT
ALL HOLES LOCATED ON .100/2.54 GRID
UNLESS OTHERWISE SPECIFIED

NOTES:

1. PRODUCT DESCRIPTION CODE:
50351 - X YYY Z LF
 - 50351: PRODUCT NUMBER
 - X: LEAD FREE (OPTIONAL)
 - YYY: TAIL LENGTH (SEE TABLE)
 - Z: NO OF POSITIONS (NOTE 3)
 - LF: PLATING (SEE TABLE)
2. MANUFACTURE'S NAME, P/N, AND LOT CODE TO APPEAR ON THIS SURFACE PER BUS-12-108.
3. THIS PRODUCT IS CONFIGURED IN SIZES OF 10 THRU 50 COLUMNS IN INCREMENTS OF ONE.
IE: 10,11,12,13,.....49,50.
4. MATERIAL:
HOUSING: GLASS AND MINERAL FILLED
HIGH TEMP. THERMOPLASTIC. FLAME RETARDANT
PER UL94V-0. COLOR: BLACK.
CONTACT: BeCu
5. PLATING:
CONTACT AREA - SEE PRODUCT NUMBER TABLE
TAILS - EITHER TIN OR TIN-LEAD, SEE PRODUCT NUMBER TABLE
6. DIMENSION "A" CALCULATION = $.100(2.54) \times \text{NO. OF COLUMNS} + .030(0.76)$
7. DIMENSION "C" CALCULATION = $.100(2.54) \times \text{NO. OF COLUMNS} - .100(2.54)$
8. ALL POSITIONS ARE LOADED EXCEPT FOR -XXYYY ASSEMBLIES WHICH HAVE SELECTIVE LOADING.
9. THIS PRODUCT (WITH "LF" SUFFIX) MEETS EUROPEAN UNION DIRECTIVES AND OTHER COUNTRY REGULATIONS AS DESCRIBED IN GS-22-008.
10. THIS HOUSING WILL WITHSTAND EXPOSURE TO 260°C PEAK TEMPERATURE FOR 10-30 SECONDS IN A CONVECTION, INFRA-RED OR VAPOR PHASE REFLOW OVEN.
11. PLATING OPTION:
MAY BE EITHER GOLD OR GXT PLATED AT MANUFACTURER'S OPTION.



Copyright FCJ

mat'l. code		surface		tolerance		projection		product family	
NOTE 4		ISO 1302		ISO 406		ISO 1301		HPC	
tr		ecp no		dr		date		title	
P								4 ROW R/A RECEPTACLE	
								CARD CONN. STYLE, S.T.B. 0 G.P.	
								scale 1:1	
								dwg no	
								sheet 2 of 3	
								size	
								A3	
								type	
								Product Customer Drawing	
sheet		revision							
index		sheet							

PRODUCT NUMBER	NUMBER OF POSITIONS NOTE 1	TAIL LENGTH	SOLDER TAIL PLATING	SOLDER TAIL PLATING NOTE 11
50351-1YYYE	YYY	.125±.010/3.18±.25	TIN-LEAD	30u"/.76u GOLD
50351-1YYYF	YYY	.145±.010/3.68±.25	TIN-LEAD	30u"/.76u GOLD
50351-1YYYH	YYY	.180±.010/4.57±.25	TIN-LEAD	30u"/.76u GOLD
50351-5YYYE	YYY	.125±.010/3.18±.25	TIN-LEAD	30u"/.76u GXT
50351-5YYYELF	YYY	.125±.010/3.18±.25	TIN	30u"/.76u GXT
50351-5YYYF	YYY	.145±.010/3.68±.25	TIN-LEAD	30u"/.76u GXT
50351-5YYYFLF	YYY	.145±.010/3.68±.25	TIN	30u"/.76u GXT
50351-5YYYH	YYY	.180±.010/4.57±.25	TIN-LEAD	30u"/.76u GXT
50351-5YYYHLF	YYY	.180±.010/4.57±.25	TIN	30u"/.76u GXT



FCIconnect.com

Copyright FCI

mat'l. code		surface		tolerance		projection		product family		
NOTE 4		ISO 1302		ISO 406		ISO 1501		HPC		
ltr	ecp no	dr	date	tolerances unless otherwise specified						
P				angles	linear	.XX±.01/XX±0.3	INCH/MM		title	
				0±2'		.XXX±.005/XX±0.13	←→		4 ROW R/A RECEPTACLE	
						.XXX±.0020/XXX±0.051	scale 1:1		CARD CONN. STYLE, S.T.B. 0 G.P.	
		dr	D. INGRAM	7/19/05	FCI		dwg no		sheet 3 of 3	
		engr	D. HORCHLER	7/19/05			50351		size	
		chr	T. BREWBKER	7/19/05			A3			
		appd	D. HORCHLER	7/19/05			type		Product Customer Drawing	
sheet	revision									
index	sheet									

form: A3