



Chipsmall Limited consists of a professional team with an average of over 10 year of expertise in the distribution of electronic components. Based in Hongkong, we have already established firm and mutual-benefit business relationships with customers from,Europe,America and south Asia,supplying obsolete and hard-to-find components to meet their specific needs.

With the principle of “Quality Parts,Customers Priority,Honest Operation,and Considerate Service”,our business mainly focus on the distribution of electronic components. Line cards we deal with include Microchip,ALPS,ROHM,Xilinx,Pulse,ON,Everlight and Freescale. Main products comprise IC,Modules,Potentiometer,IC Socket,Relay,Connector.Our parts cover such applications as commercial,industrial, and automotives areas.

We are looking forward to setting up business relationship with you and hope to provide you with the best service and solution. Let us make a better world for our industry!



## Contact us

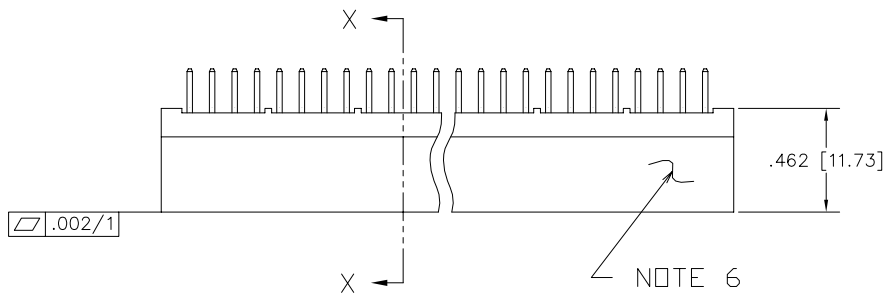
Tel: +86-755-8981 8866 Fax: +86-755-8427 6832

Email & Skype: info@chipsmall.com Web: www.chipsmall.com

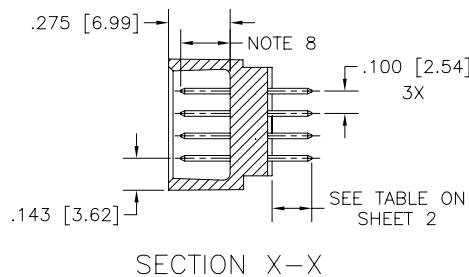
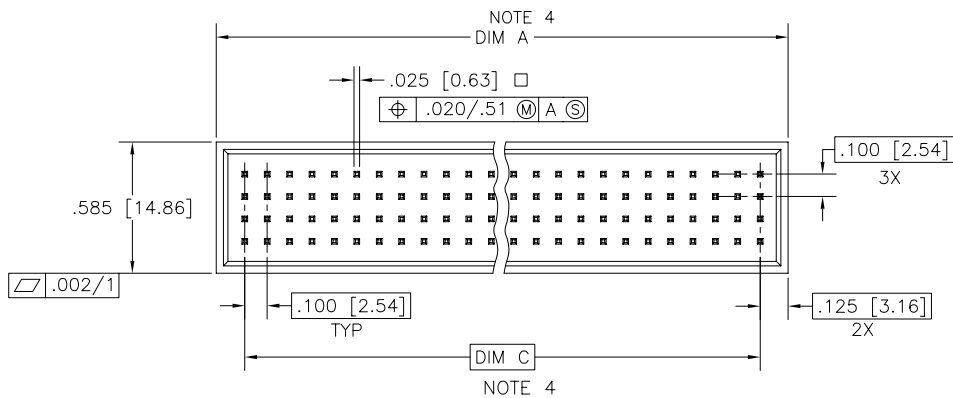
Address: A1208, Overseas Decoration Building, #122 Zhenhua RD., Futian, Shenzhen, China



PRODUCT NUMBER  
SEE SHEET 2



NOTE 6



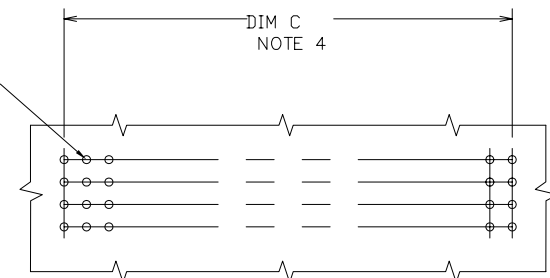
SECTION X-X

mat'l. code				surface ISO 1302 ✓		tolerance ISO 406 ISO 1101		projection INCH/MM		product family HPC	
tolerances unless otherwise specified				angles		linear		scale 1:1		title	
ltr	ecn no	dr	date			.xx±.01/.3				4 ROW VERTICAL HEADER	
C	V20809	MRC	4/7/92			.xxx±.005/.13				CARD CONN. STYLE SOLDER TAILS PINS	
D	V20363	JM	2/21/93			.xxxx±.0020/.051				dwg no	
E	V90861	HTB	4/18/99	0'±2'						sheet 1 of 2 size	
F	V00278	JWS	2/4/00	dr	D.HORCHLER	7/5/05				A3	
G	V05-0632	DCH	7/5/05	engr	D.HORCHLER	7/5/05				50357	
H	V05-1039	DAI	11/15/05	chr	T.BREWBAKER	7/5/05				type	
J	M06-0260	MHT	7/07/06	appd	D.HORCHLER	7/5/05				Product Customer Drawing	
sheet index	revision	J	J								
sheet	sheet	1	2								

PRODUCT NUMBER	NUMBER OF POSITIONS	TAIL LENGTH ±.015/0.38	CONTACT AREA PLATING
50357-1YYYY	YYY, NOTES 1, 2	.177/4.49	30u"/.76u GOLD
50357-3YYYY	YYY, NOTES 1, 2	.177/4.49	50u"/1.27u GOLD
50357-5YYYY	YYY, NOTES 1, 2	.177/4.49	30u"/.76u GXT
50357-5YYYYALF	YYY, NOTES 1, 2	.177/4.49	30u"/.76u GXT
50357-1YYYYJ	YYY, NOTES 1, 2	.120/3.05	30u"/.76u GOLD
50357-3YYYYJ	YYY, NOTES 1, 2	.120/3.05	50u"/1.27u GOLD
50357-5YYYYJ	YYY, NOTES 1, 2	.120/3.05	30u"/.76u GXT
50357-5YYYYJLF	YYY, NOTES 1, 2	.120/3.05	30u"/.76u GXT
50357-1YYYYC	YYY, NOTES 1, 2	.533/13.54	30u"/.76u GOLD
50357-3YYYYC	YYY, NOTES 1, 2	.533/13.54	50u"/1.27u GOLD
50357-5YYYYC	YYY, NOTES 1, 2	.533/13.54	30u"/.76u GXT
50357-5YYYYCLF	YYY, NOTES 1, 2	.533/13.54	30u"/.76u GXT
50357-1YYYYD	YYY, NOTES 1, 2	.733/18.62	30u"/.76u GOLD
50357-3YYYYD	YYY, NOTES 1, 2	.733/18.62	50u"/1.27u GOLD
50357-5YYYYD	YYY, NOTES 1, 2	.733/18.62	30u"/.76u GXT
50357-5YYYYDLF	YYY, NOTES 1, 2	.733/18.62	30u"/.76u GXT
50357-1YYYYG	YYY, NOTES 1, 2	.250/6.35	30u"/.76u GOLD
50357-3YYYYG	YYY, NOTES 1, 2	.250/6.35	50u"/1.27u GOLD
50357-5YYYYG	YYY, NOTES 1, 2	.250/6.35	30u"/.76u GXT
50357-5YYYYGLF	YYY, NOTES 1, 2	.250/6.35	30u"/.76u GXT

NOTES:

- THIS PRODUCT IS CONFIGURED IN SIZES OF 10 THRU 50 COLUMNS IN INCREMENTS OF ONE.  
IE: 10,11,12,13,.....49,50.
- PRODUCT DESCRIPTION CODE:  
50357 - X YYY Z LF  
  - X: LEAD FREE (OPTIONAL WITH GXT VERSION)
  - YYY: TAIL LENGTH (NOTE 5)
  - Z: NO OF POSITIONS
  - LF: PLATING (NOTE 4)
  - 50357: BASE NUMBER
- HOUSING MAT'L: GLASS AND MINERAL FILLED HIGH TEMP. THERMOPLASTIC. FLAME RETARDANT PER UL94V-0. COLOR: BLACK.  
PIN MAT'L: PHOS BRONZE
- DISTANCE CALCULATIONS:  
DIMENSION "A" = .100/2.54 X NO. OF COLUMNS + .15/3.8.  
DIMENSION "C" = .100/2.54 X NO. OF COLUMNS - .100/2.54.
- XXXXX-XXXXXLF PRODUCT MEETS EUROPEAN UNION DIRECTIVES AND OTHER COUNTRY REGULATIONS AS DESCRIBED IN GS-22-008.
- MANUFACTURER'S NAME AND P/N, AND LOT CODE TO APPEAR ON THIS SURFACE PER BUS-12-108.
- FOR PRODUCT PERFORMANCE SEE PRODUCT SPECIFICATION NUMBER BUS-12-090.
- STANDARD MATING LENGTH IS .22/5.6.  
OTHER COMMON LENGTHS AVAILABLE ARE .18/4.6 AND .26/6.6. FIRST-MATE/LAST-BREAK APPLICATIONS CAN BE DEVELOPED BY SELECTIVELY LOADING THESE VARYING MATING LENGTHS - SEE DRAWING P/N 50145.  
CUSTOMER MATING LENGTHS ARE AVAILABLE. CONTACT YOUR CUSTOMER SERVICE REPRESENTATIVE FOR INFORMATION.
- THE HOUSING WILL WITHSTAND EXPOSURE TO 260° C PEAK TEMPERATURE FOR 30 SECONDS IN A WAVE SOLDER APPLICATION.



RECOMMENDED PCB LAYOUT  
ALL HOLES LOCATED ON .100/2.54 GRID UNLESS OTHERWISE SPECIFIED

mat'l. code		surface ISO 1302 ✓	tolerance ISO 406 ISO 1101	projection ⊕	product family HPC
ltr	ecn	no	dr	date	tolerances unless otherwise specified
J					angles linear .xx±.01/.3
					0'±2' .xxx±.005/.13
					.xxxx±.0020/.05
			dr	D.HORCHLER	7/5/05
			enr	D.HORCHLER	7/5/05
			chr	T.BREWBAKER	7/5/05
			appd	D.HORCHLER	7/5/05
sheet index	revision sheet				



INCH/MM  
scale 1:1  
title  
4 ROW VERTICAL HEADER  
CARD CONN. STYLE SOLDER TAILS PINS  
dwg no 50357 sheet 2 of 2 size A3  
type Product Customer Drawing