



Chipsmall Limited consists of a professional team with an average of over 10 year of expertise in the distribution of electronic components. Based in Hongkong, we have already established firm and mutual-benefit business relationships with customers from,Europe,America and south Asia,supplying obsolete and hard-to-find components to meet their specific needs.

With the principle of “Quality Parts,Customers Priority,Honest Operation,and Considerate Service”,our business mainly focus on the distribution of electronic components. Line cards we deal with include Microchip,ALPS,ROHM,Xilinx,Pulse,ON,Everlight and Freescale. Main products comprise IC,Modules,Potentiometer,IC Socket,Relay,Connector.Our parts cover such applications as commercial,industrial, and automotives areas.

We are looking forward to setting up business relationship with you and hope to provide you with the best service and solution. Let us make a better world for our industry!



Contact us

Tel: +86-755-8981 8866 Fax: +86-755-8427 6832

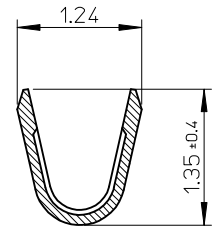
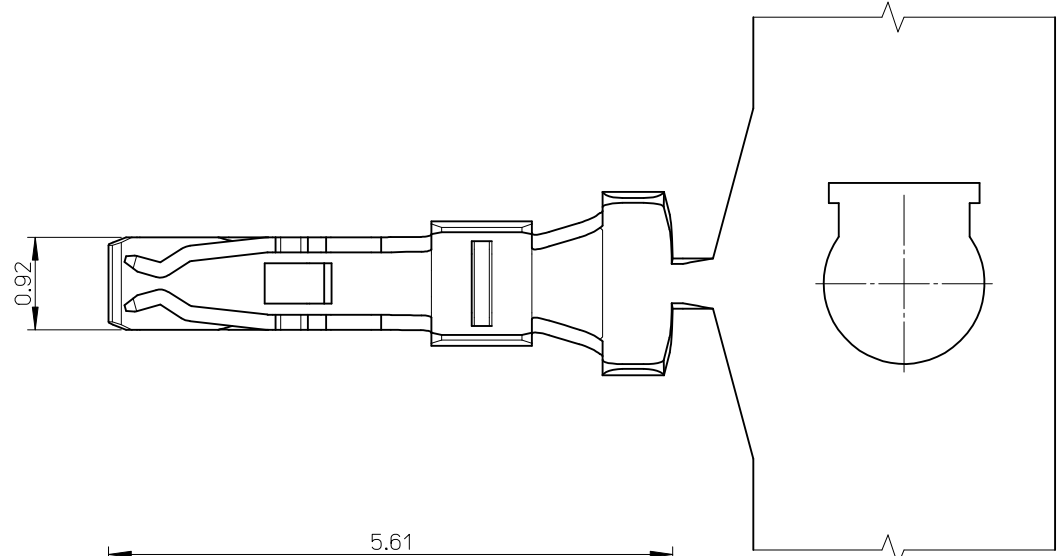
Email & Skype: info@chipsmall.com Web: www.chipsmall.com

Address: A1208, Overseas Decoration Building, #122 Zhenhua RD., Futian, Shenzhen, China

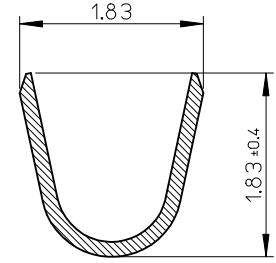
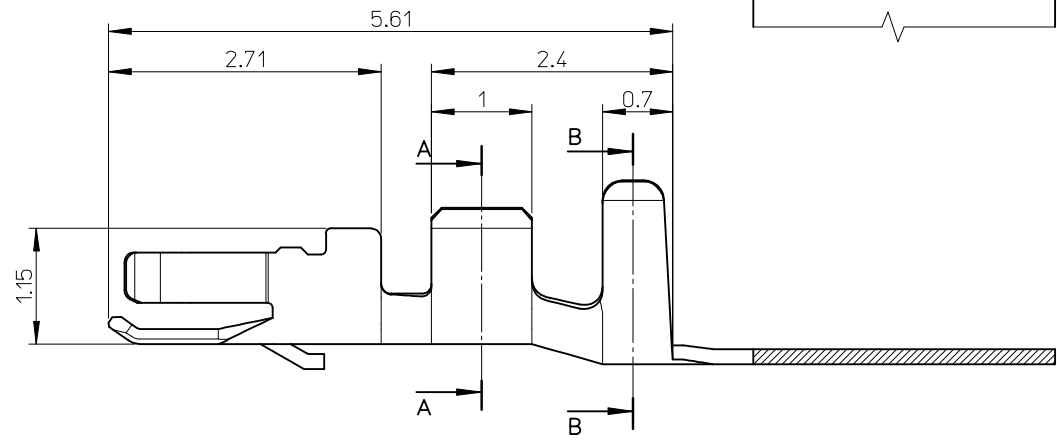
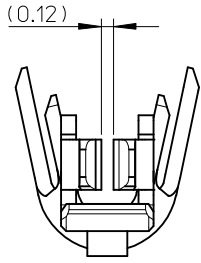


10 9 8 7 6 5 4 3 2 1

- NOTES.
 1. 適合ハウジング: 504051****
 APPLICABLE HOUSING : 504051****
 2. 材質: 銅合金
 MATERIAL : COPPER ALLOY
 3. メッキ仕様: 金メッキ、ニッケル下地
 PLATING : GOLD PLATING
 NICKEL UNDER PLATING
 4. 圧着後、CS-504052-001の内容を満たす事
 FULFILL THE CONTENTS OF
 CS-504052-001 AFTER CRIMP



SECTION A-A



SECTION B-B

| | | | |
|--------------|--------------|------------|-------|
| φ0.8 - 1.1mm | AWG #24 - 28 | 5040520098 | CHAIN |
| INS. RANGE | WIRE RANGE | ORDER No. | FORM |

| | | | | | | | | | |
|---|----------------------|--|-------|----------------------------|---|--|------------------------|------------------------|--|
| RELEASED EC NO: J2014-1702 DRWN: YMAKE 2014/05/21 CHKD: KASAKAWA 2014/05/21 APPR: NUKITA 2014/05/21 | DESCRIPTION REV A | GENERAL TOLERANCES (UNLESS SPECIFIED) | | DIMENSION STYLE MM ONLY | | SCALE 20:1 | DESIGN UNITS METRIC | THIRD ANGLE PROJECTION | |
| | | 10 UNDER | ±0.2 | DRAWN BY THANYU | DATE 2012/03/29 | TITLE 1.5 WIRE TO BOARD CONN. REC CRIMP TERMINAL (AWG #24 - 28) molex | | | |
| | | 10 OVER 30 UNDER | ±0.25 | CHECKED BY KASAKAWA | DATE 2012/03/29 | | | | |
| | | 30 OVER | ±0.3 | APPROVED BY YOITO | DATE 2012/09/04 | | | | |
| ANGULAR ±3° | | DRAFT WHERE APPLICABLE MUST REMAIN WITHIN DIMENSIONS | | MATERIAL NO. SEE CHART | | DOCUMENT NO. SD-504052-001 | | SHEET NO. 1 OF 1 | |
| | | | | SIZE A3 | THIS DRAWING CONTAINS INFORMATION THAT IS PROPRIETARY TO MOLEX INCORPORATED AND SHOULD NOT BE USED WITHOUT WRITTEN PERMISSION | | | | |

9 8 7 6 5 4 3 2