



Chipsmall Limited consists of a professional team with an average of over 10 year of expertise in the distribution of electronic components. Based in Hongkong, we have already established firm and mutual-benefit business relationships with customers from,Europe,America and south Asia,supplying obsolete and hard-to-find components to meet their specific needs.

With the principle of “Quality Parts,Customers Priority,Honest Operation,and Considerate Service”,our business mainly focus on the distribution of electronic components. Line cards we deal with include Microchip,ALPS,ROHM,Xilinx,Pulse,ON,Everlight and Freescale. Main products comprise IC,Modules,Potentiometer,IC Socket,Relay,Connector.Our parts cover such applications as commercial,industrial, and automotives areas.

We are looking forward to setting up business relationship with you and hope to provide you with the best service and solution. Let us make a better world for our industry!



Contact us

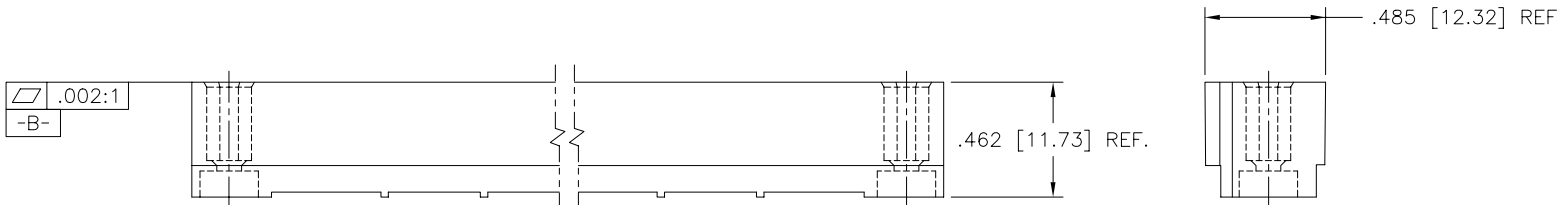
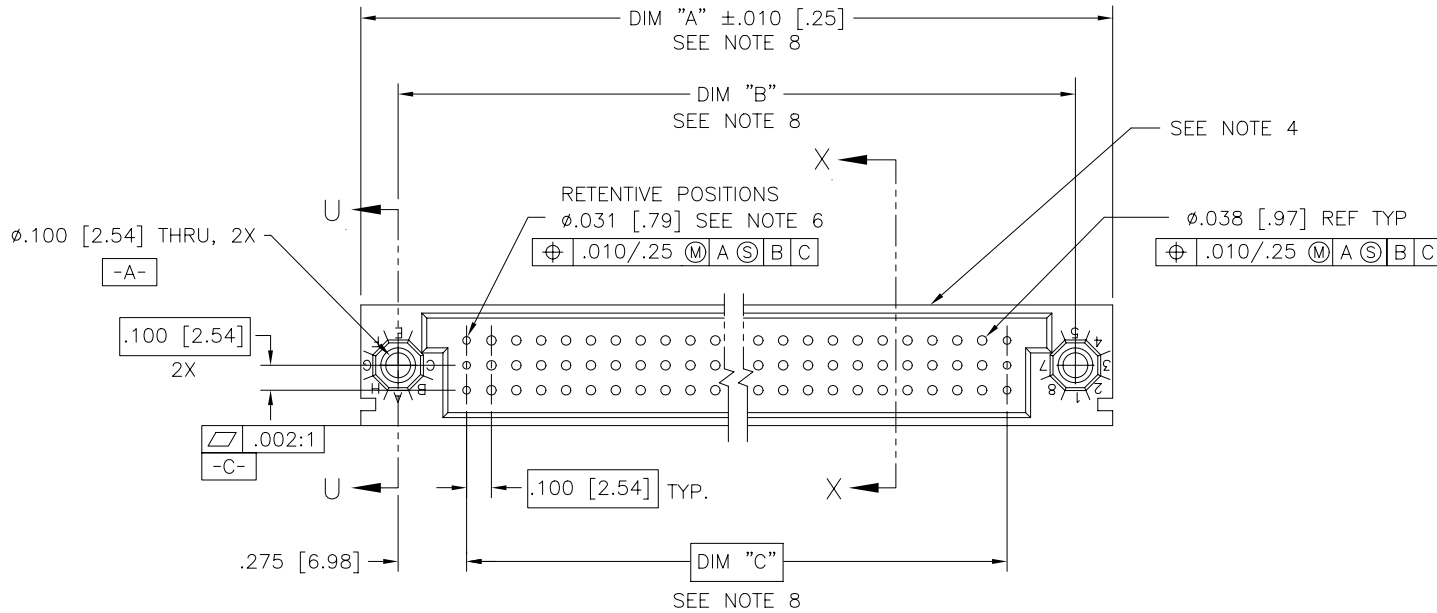
Tel: +86-755-8981 8866 Fax: +86-755-8427 6832

Email & Skype: info@chipsmall.com Web: www.chipsmall.com

Address: A1208, Overseas Decoration Building, #122 Zhenhua RD., Futian, Shenzhen, China



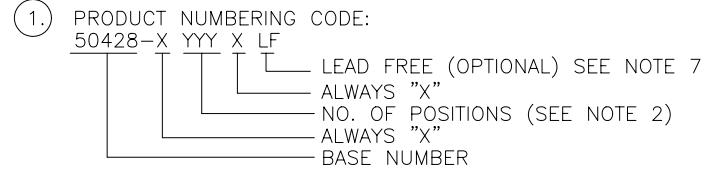
PRODUCT NO.
SEE NOTE 1



| | | | | | | | | | |
|-----------------------|----------|-----------------------|----------|---------------------------------------|-------------|-------------------|---|-------------------------------|--|
| mat'l. code NOTE 3 | | surface ISO 1302 ✓ | | tolerance ISO 406 ISO 1101 | | projection ⊕ | | product family HPC | |
| ltr | | ecn no | | dr | | date | | title | |
| G | v10135 | LSS | 1/11/01 | tolerances unless otherwise specified | | .xx ±.01/.3 | | VERTICAL SHROUD-RETENTIVE | |
| H | v20188 | MEM | 2/14/02 | angles | linear | .xxx ±.005/.13 | | 3 ROW W/O GUIDE PINS | |
| J | v20333 | MEM | 2/14/02 | σ±2' | | .xxxx ±.0020/.051 | | scale 1:1 | |
| K | v21752 | TAB | 11/12/02 | dr | D. SHEAFFER | 8/07/91 | | dwg no | |
| L | v03-0409 | MEM | 4/11/03 | engr | S. CLARK | 10/23/91 | | sheet 1 of 5 size | |
| M | v05-0699 | DAI | 8/19/05 | chr | S. CLARK | 10/23/91 | | 50428 A3 | |
| N | M06-0255 | AEA | 7/07/06 | appd | S. CLARK | 10/23/91 | | type Product Customer Drawing | |
| sheet | revision | N | N | N | N | N | N | | |
| index | sheet | 1 | 2 | 3 | 4 | 5 | | | |

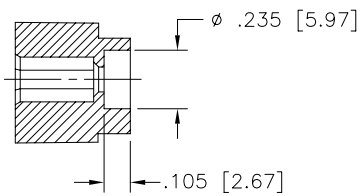
PRODUCT NUMBER
SEE NOTE 1

NOTES:

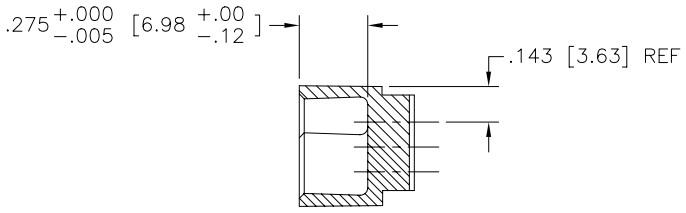


SEE SHEET 3 FOR P/N 50428-XX001 OR 50428-XX001LF
SEE SHEET 4 FOR P/N 50428-XX002 OR 50428-XX002LF
SEE SHEET 5 FOR P/N 50428-XX003 OR 50428-XX003LF

- ①. THIS PRODUCT IS CONFIGURED IN SIZES OF 6 THRU 80 COLUMNS IN INCREMENTS OF ONE. i.e.: 6, 7, 8, 9,.....79, 80.
- ②. MATERIAL: GLASS AND MINERAL FILLED THERMOPLASTIC FLAME RETARDANT PER UL94 V-0. COLOR: BLACK
- ③. MANFACTURE'S NAME, P/N, AND LOT CODE TO APPEAR ON THIS SURFACE.
- ④. THIS SHROUD WILL WITHSTAND EXPOSURE TO 260°C PEAK TEMPERTURE FOR 10-30 SECONDS IN A CONVECTION, INFRA-RED OR VAPOR PHASE REFLOW OVEN.
- ⑤. DIMENSION APPLIES TO END COLUMN HOLES AT BOTH ENDS.
- ⑥. THIS PRODUCT (WITH "LF" SUFFIX) MEETS EUROPEAN UNION DIRECTIVES AND OTHER COUNTRY REGULATIONS AS DESCRIBED IN GS-22-008.
- ⑦. LENGTH FORMULAS
 DIM A = $.100/2.54 \times \text{NO. OF COLUMNS} + .75/19.1$
 DIM B = $.100/2.54 \times \text{NO. OF COLUMNS} + .450/11.43$
 DIM C = $.100/2.54 \times \text{NO. OF COLUMNS} - .100/2.54$



SECTION U-U



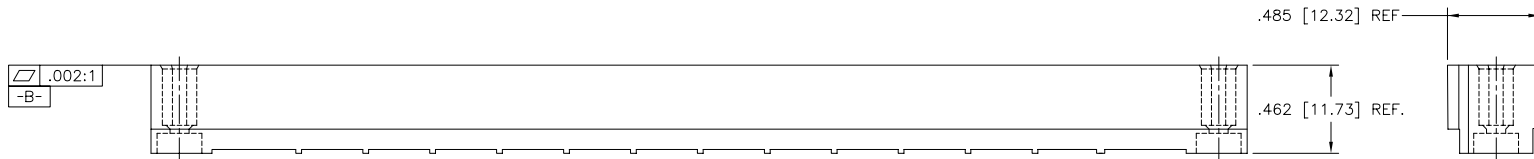
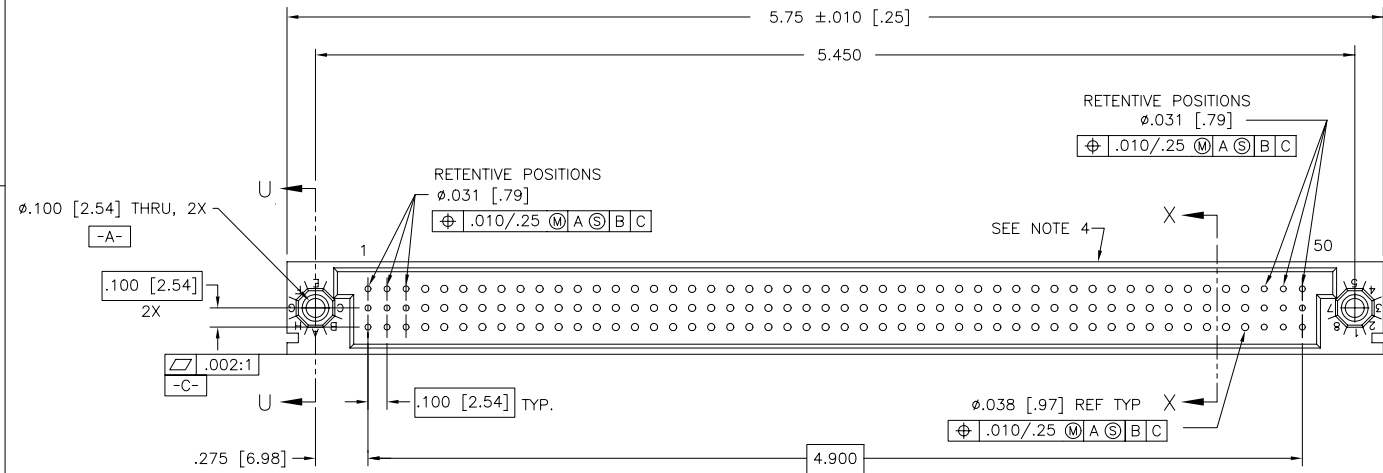
SECTION X-X



Copyright FCI

| | | | | | | | | | |
|-------------|--|----------------|--|------------------------|--|--|--|---|--|
| mat'l. code | | surface | | tolerance | | projection | | product family | |
| - | | ISO 1302 ✓ | | ISO 406 ISO 1101 | | ⊕ | | HPC | |
| ltr | | ecn no dr | | date | | tolerances unless otherwise specified | | title | |
| N | | | | | | .xx ±.01/.3 .xxx ±.005/.13 .xxxx ±.0020/.051 | | VERTICAL SHROUD-RETENTIVE 3 ROW W/O GUIDE PINS | |
| | | | | | | scale 1:1 | | dwg no | |
| | | | | dr D. SHEAFFER 8/07/91 | | FCI | | sheet 2 of 5 size | |
| | | | | enr S. CLARK 10/23/91 | | | | 50428 A3 | |
| | | | | chr S. CLARK 10/23/91 | | | | type Product Customer Drawing | |
| | | | | appd S. CLARK 10/23/91 | | | | | |
| sheet index | | revision sheet | | | | | | | |

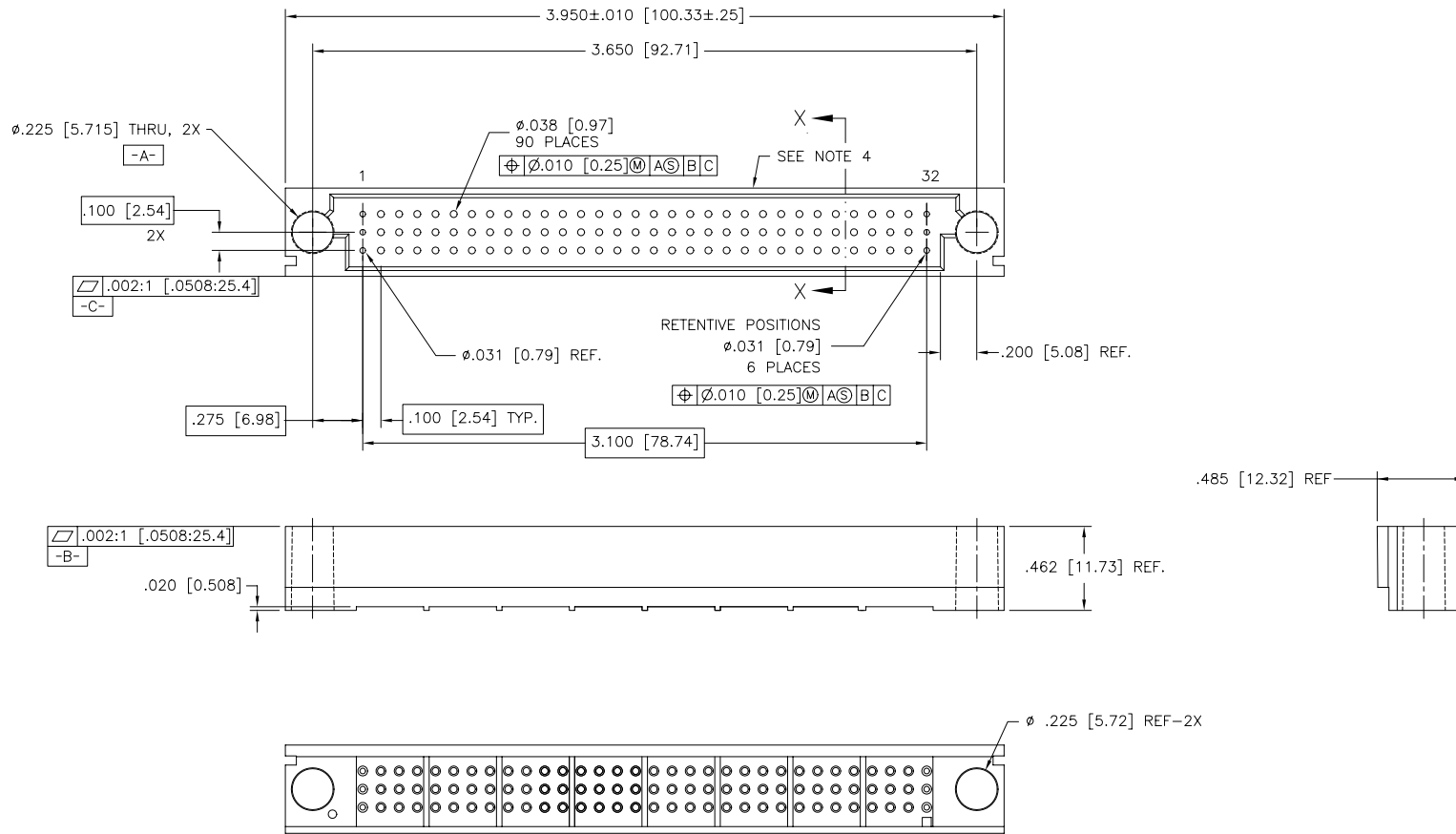
| PRODUCT NUMBER | DESCRIPTION | NOTE |
|----------------|-------------------------------------|------------|
| 50428-XX001 | 150 POSITION EXTRA RETENTIVE SHROUD | SEE NOTE 1 |
| 50428-XX001LF | SAME AS 50428-XX001 | SEE NOTE 7 |



| | | | | | |
|-----------------------|----------|-----------------------|----------------------------------|-----------------------|--|
| mat'l. code NOTE 3 | | surface ISO 1302 ✓ | tolerance ISO 406 ISO 1101 | projection INCH/MM | product family HPC |
| ltr | ecn | no | dr | date | title |
| N | | | | | VERTICAL SHROUD-RETENTIVE 3 ROW W/O GUIDE PINS |
| | | | | angles | linear |
| | | | | $\phi \pm 2'$ | .xx ±.01/.3 .xxx ±.005/.13 .xxxx ±.0020/.051 |
| | | | | dr | L. SANDERS 1/11/01 |
| | | | | enr | M. GRAY 1/11/01 |
| | | | | chr | M. GRAY 1/11/01 |
| | | | | appd | M. GRAY 1/11/01 |
| sheet | revision | | | | FCJ |
| index | sheet | | | | |
| | | | | scale 1:1 | dwg no 50428 |
| | | | | | sheet 3 of 5 size A3 |
| | | | | | type Product Customer Drawing |

form: A3

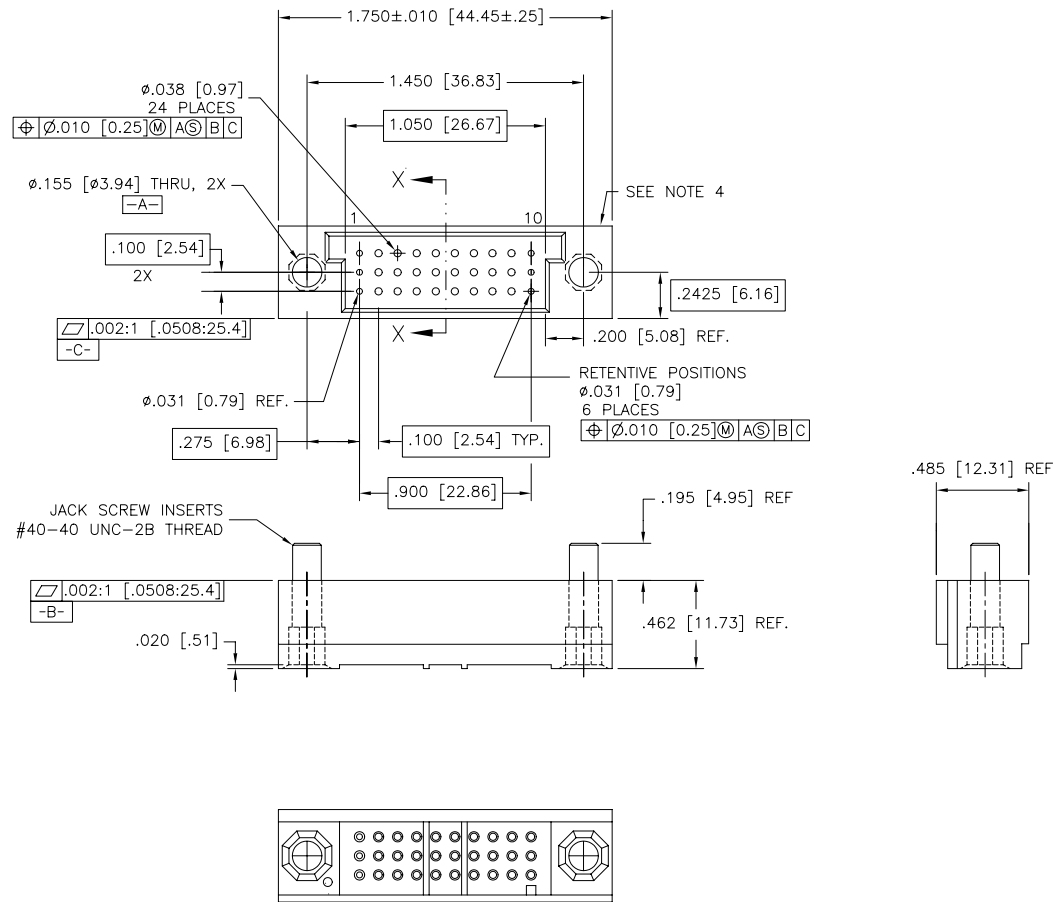
| PRODUCT NUMBER | DESCRIPTION | NOTE |
|----------------|----------------------------|------------|
| 50428-XX002 | 96 POSITION SPECIAL SHROUD | SEE NOTE 1 |
| 50428-XX002LF | SAME AS 50428-XX002 | SEE NOTE 7 |



| | | | | | | | | | |
|-------------|-----|----------------|----|-----------|---------------------------------------|--------------------------|-------------------|---------------------------|--|
| mat'l. code | | surface | | tolerance | | projection | | product family | |
| - | | ISO 1302 ✓ | | ISO 406 | | ISO 1101 | | HPC | |
| ltr | ecn | no | dr | date | tolerances unless otherwise specified | | | | |
| N | | | | | angles | linear | .xx ±.01/.3 | title | |
| | | | | | σ±2' | | .xxx ±.005/.13 | VERTICAL SHROUD-RETENTIVE | |
| | | | | | | | .xxxx ±.0020/.051 | 3 ROW W/O GUIDE PINS | |
| | | | | | dr | M. MOSTOLLER | 1/24/02 | scale 1:1 | |
| | | | | | enr | M. MOSTOLLER | 1/24/02 | dwg no | |
| | | | | | chr | J. ALLISON | 1/24/02 | 50428 | |
| | | | | | app | M. MOSTOLLER | 1/24/02 | sheet 4 of 5 size | |
| | | | | | | | | A3 | |
| sheet index | | revision sheet | | type | | Product Customer Drawing | | | |

form: A3

| PRODUCT NUMBER | DESCRIPTION | NOTES |
|----------------|--|------------|
| 50428-XX003 | 30 POSITION SPECIAL SHROUD W/ JACK SCREW INSERTS | SEE NOTE 1 |
| 50428-XX003LF | SAME AS 50428-XX003 | SEE NOTE 7 |



CONFIDENTIAL

| | | | | | | | | | |
|-------------|--|----------------|--|---------------------------|--|--|--|---|--|
| mat'l. code | | surface | | tolerance | | projection | | product family | |
| - | | ISO 1302 ✓ | | ISO 406 ISO 1101 | | | | HPC | |
| ltr | | ecn no | | date | | tolerances unless otherwise specified | | title | |
| N | | | | | | .xx ±.01/.3 .xxx ±.005/.13 .xxxx ±.0020/.051 | | VERTICAL SHROUD-RETENTIVE 3 ROW W/O GUIDE PINS | |
| | | | | | | angles linear 0°±2' | | INCH/MM scale 1:1 | |
| | | | | dr T.BRUNGARD 11/12/02 | | | | dwg no | |
| | | | | enr M. MOSTOLLER 11/12/02 | | | | sheet 5 of 5 size | |
| | | | | chr M. MOSTOLLER 11/12/02 | | | | 50428 A3 | |
| | | | | app M. MOSTOLLER 11/12/02 | | | | type Product Customer Drawing | |
| sheet index | | revision sheet | | | | | | | |