



Chipsmall Limited consists of a professional team with an average of over 10 year of expertise in the distribution of electronic components. Based in Hongkong, we have already established firm and mutual-benefit business relationships with customers from,Europe,America and south Asia,supplying obsolete and hard-to-find components to meet their specific needs.

With the principle of “Quality Parts,Customers Priority,Honest Operation,and Considerate Service”,our business mainly focus on the distribution of electronic components. Line cards we deal with include Microchip,ALPS,ROHM,Xilinx,Pulse,ON,Everlight and Freescale. Main products comprise IC,Modules,Potentiometer,IC Socket,Relay,Connector.Our parts cover such applications as commercial,industrial, and automotives areas.

We are looking forward to setting up business relationship with you and hope to provide you with the best service and solution. Let us make a better world for our industry!



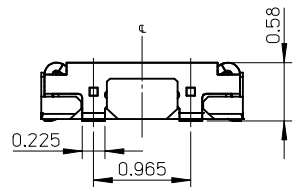
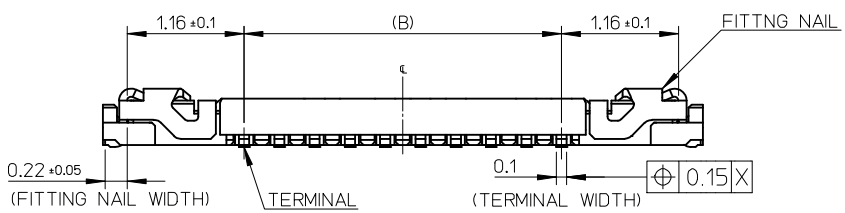
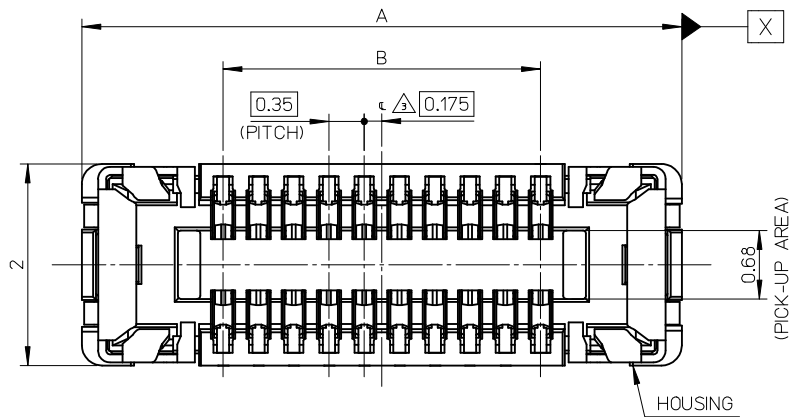
Contact us

Tel: +86-755-8981 8866 Fax: +86-755-8427 6832

Email & Skype: info@chipsmall.com Web: www.chipsmall.com

Address: A1208, Overseas Decoration Building, #122 Zhenhua RD., Futian, Shenzhen, China





NOTES

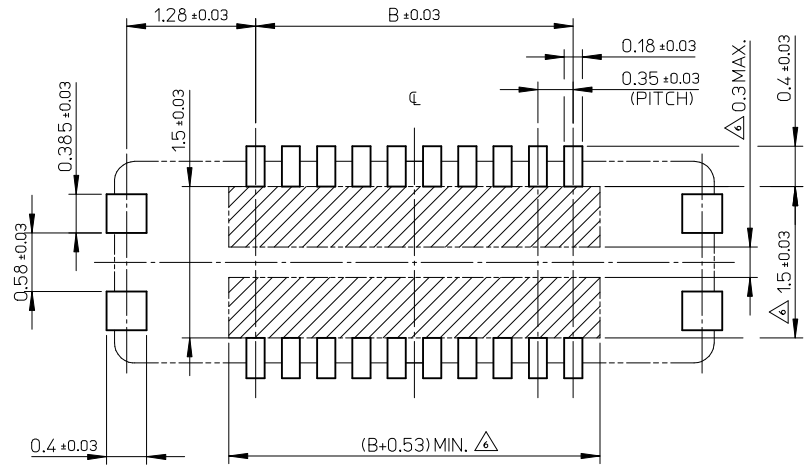
- MATERIAL
HOUSING : LIQUID CRYSTAL POLYMER UL94V-0(COLOR : BLACK)
TERMINAL : COPPER ALLOY
FITTING NAIL : COPPER ALLOY
 - PLATING
TERMINAL :
GOLD
UNDER PLATING : NICKEL
*DIVIDE INTO PARTS THE GOLD PLATING OF THE CONTACT AND THE TAIL PART BY THE NICKEL PLATING.
FITTING NAIL :
GOLD
UNDER PLATING : NICKEL
*DIVIDE INTO PARTS THE GOLD PLATING OF THE CONTACT AND THE TAIL PART BY THE NICKEL PLATING.
- △ APPLY FOR (CIRCUIT/2)=EVEN.
4. MATE WITH : 505070-***10
5. TAIL AND FITTING NAIL COPLANARITY TO BE 0.08MAXIMUM.
△ PROHIBITED AREA OF PATTERN WIRING AND SOLDER.
(FOR EACH AREA, THE WIRING THAT TOUCHES ON THE SOLDER CAN BE ATTACHED, THEN COVERED WITH A FILM TO KEEP SOLDER OUT.)
7. ELV and RoHS COMPLIANT.

11.90	14.70	505066-7010	---	---	70
10.85	13.65	505066-6410	---	---	64
10.15	12.95	505066-6010	---	---	60
9.80	12.60	505066-5810	---	---	58
9.10	11.90	505066-5410	---	---	54
8.40	11.20	505066-5010	---	---	50
8.05	10.85	505066-4810	o	---	48
7.70	10.50	505066-4610	---	---	46
7.00	9.80	505066-4210	---	---	42
6.65	9.45	505066-4010	o	---	40
6.30	9.10	505066-3810	---	---	38
5.60	8.40	505066-3410	o	---	34
4.90	7.70	505066-3010	o	---	30
3.85	6.65	505066-2410	o	---	24
3.50	6.30	505066-2210	---	---	22
3.15	5.95	505066-2010	---	---	20
2.80	5.60	505066-1810	---	---	18
2.45	5.25	505066-1610	o	---	16
2.10	4.90	505066-1410	---	---	14
1.75	4.55	505066-1210	o	---	12
1.40	4.20	505066-1010	---	---	10
0.70	3.50	505066-0610	o	---	6

B	A	EMBOSSED TAPE PACKAGE	HIGH VOL. TOOL	LOW VOL. TOOL	CIRCUIT
		ORDER NO.	SAMPLE PREPARATION o : TOOLED △ : WORK IN PROCESS ---: TOOLING TO BE CONFIRMED		

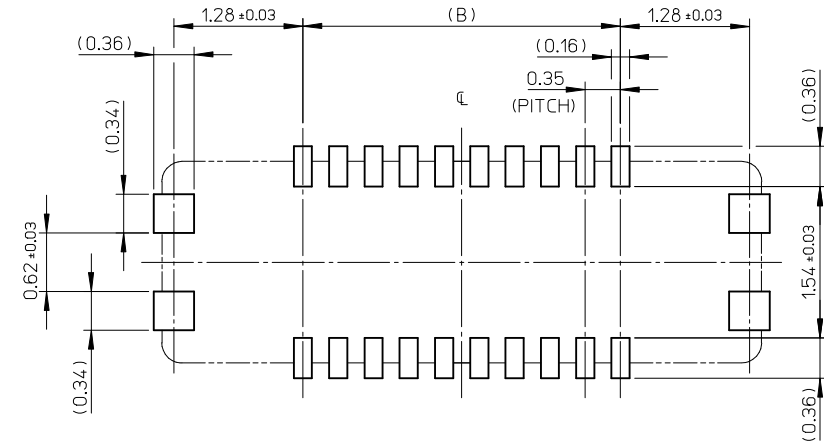
CONNECTOR SERIES No. : 505066-***09

REVISED EC NO: J2016-0051 DRWN:TSOMEYA 2015/07/15 CHKD:KTANAKA03 2015/07/15 APPR:KMORIKAWA 2015/07/15	DESCRIPTION	GENERAL TOLERANCES (UNLESS SPECIFIED)		DIMENSION STYLE MM ONLY		SCALE 20:1	DESIGN UNITS METRIC	THIRD ANGLE PROJECTION
		0.25 UNDER	± 0.03	DRAWN BY KSASAKI	DATE 2014/04/07	TITLE 0.35 BB CONN. H=0.6 SSB6 RP REC. ASSY		
		0.25 OVER 0.5 UNDER	± 0.05	CHECKED BY KTANAKA03	DATE 2014/04/07	DOCUMENT NO. SD-505066-001		
		0.5 OVER 1.0 UNDER	± 0.1	APPROVED BY KMORIKAWA	DATE 2014/04/08			
		1.0 OVER 30 UNDER	± 0.25	MATERIAL NO.		SEE CHART		SHEET NO. 1 OF 2
		30 OVER	± 0.3	DRAFT WHERE APPLICABLE MUST REMAIN WITHIN DIMENSIONS		THIS DRAWING CONTAINS INFORMATION THAT IS PROPRIETARY TO MOLEX INCORPORATED AND SHOULD NOT BE USED WITHOUT WRITTEN PERMISSION		



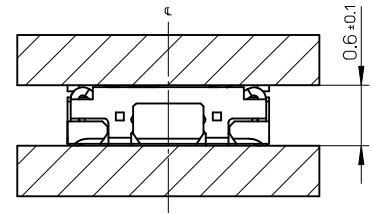
RECOMMENDED P.W.BOARD PATTERN LAYOUT (REFERENCE)

△ PROHIBITED AREA OF PATTERN WIRING AND SOLDER.
 (FOR EACH AREA, THE WIRING THAT TOUCHES ON THE SOLDER
 CAN BE ATTACHED, THEN COVERED WITH A FILM TO KEEP SOLDER OUT.)



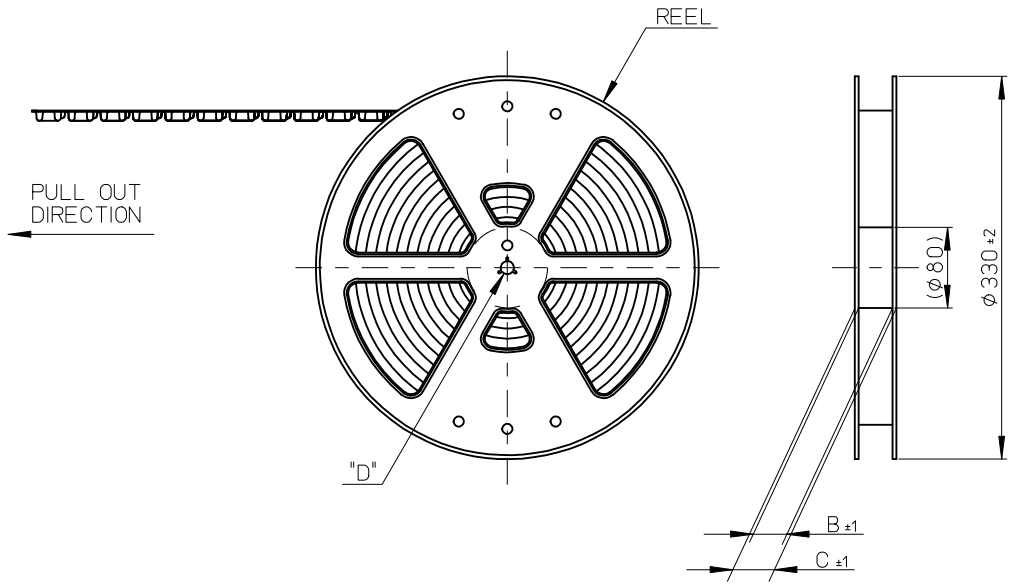
RECOMMENDED METAL MASK LAYOUT (REFERENCE)

RECOMMENDED THICKNESS OF METAL MASK : t=0.08mm
 RECOMMENDED OPEN APERTURE RATIO OF METAL MASK : 80%

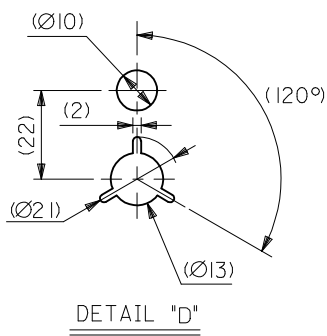


MATED CONDITION

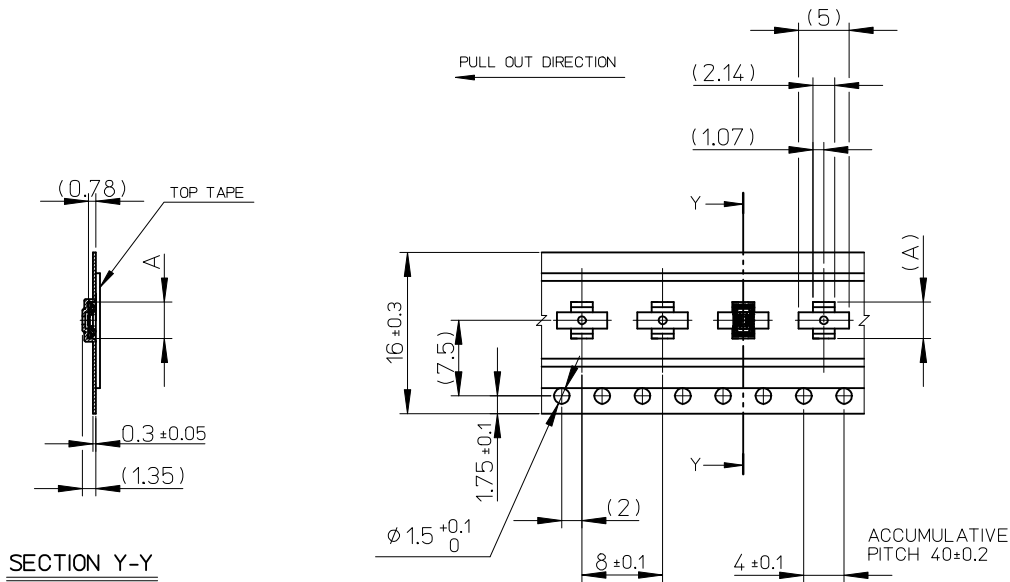
ENTER DESCRIPTION EC NO: J2016-0051 DRWN: TSOMEYA 2015/07/15 CHKD: KTANAKA03 2015/07/15 APPR: KMORIKAWA 2015/07/15	GENERAL TOLERANCES (UNLESS SPECIFIED)		DIMENSION STYLE MM ONLY		SCALE 20:1	DESIGN UNITS METRIC	THIRD ANGLE PROJECTION	
	0.25 UNDER	± 0.03	DRAWN BY	DATE	TITLE			
	0.25 OVER 0.5 UNDER	± 0.05	KSASAKI	2014/04/07	0.35 BB CONN. H=0.6 SSB6 RP REC. ASSY			
	0.5 OVER 1.0 UNDER	± 0.1	CHECKED BY	DATE				
	1.0 OVER 30 UNDER	± 0.2	KTANAKA03	2014/04/07				
10 OVER 30 UNDER	± 0.25	APPROVED BY	DATE	MATERIAL NO.		DOCUMENT NO.		SHEET NO.
30 OVER	± 0.3	KMORIKAWA	2014/04/08	9999999999		SD-505066-001		2 OF 2
ANGULAR	± 1 °	DRAFT WHERE APPLICABLE MUST REMAIN WITHIN DIMENSIONS		SIZE A3	THIS DRAWING CONTAINS INFORMATION THAT IS PROPRIETARY TO MOLEX INCORPORATED AND SHOULD NOT BE USED WITHOUT WRITTEN PERMISSION			



- NOTES**
- RE DETAILED DIMENSION, SEE PRODUCT DRAWING.
 - NUMBER OF CONNECTORS : 3000PCS/REEL
 - LEAD TAPE LENGTH
-
- TOP TAPE PEEL FORCE IS DEFINED BY IEC60286-3.
 - MATERIAL
 CARRIER TAPE : POLYSTYRENE
 TOP TAPE : PET , OTHER
 REEL : POLYSTYRENE (PS) <RECYCLE MATERIAL CONTAINED>
 - ELV AND RoHS COMPLIANT

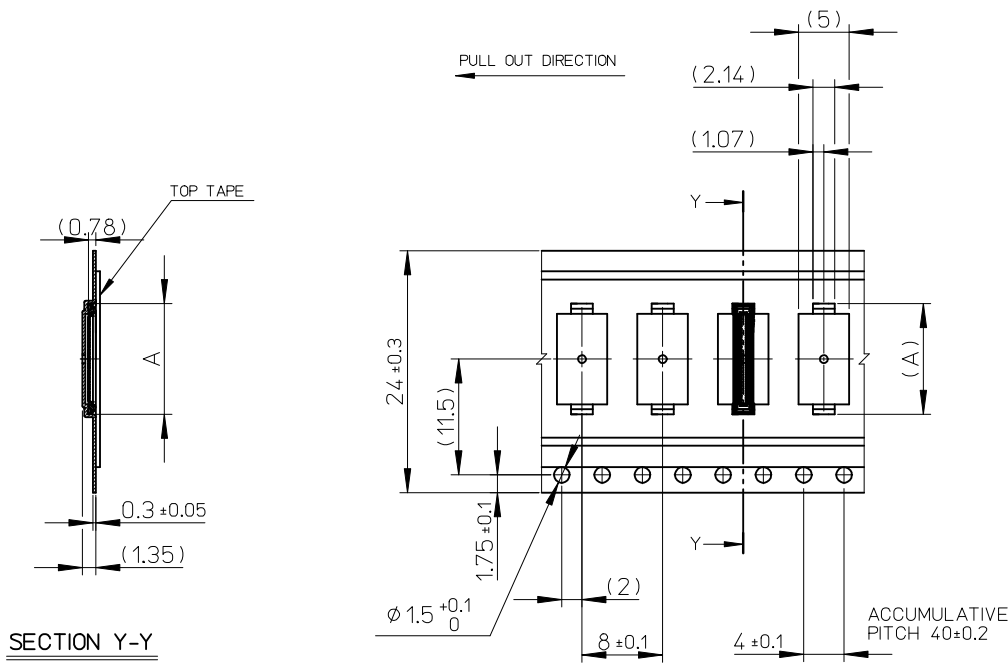


REVISED EC NO: J2016-0051 DRWN:TSOMEYA 2015/07/15 CHK'D:KTANAKA03 2015/07/15 APPR:KMORIKAWA 2015/07/15	GENERAL TOLERANCES (UNLESS SPECIFIED)		DIMENSION STYLE		MODEL NO.	505066-**10
	0.25 UNDER ± 0.03		MM ONLY		DESIGN UNITS	METRIC
	0.25 OVER 0.5 UNDER ± 0.05		DRAWN BY DATE		0.35 BB CONN. H=0.6 SSB6 RP REC. ASSY EMBSTP PKG molex	
	0.5 OVER 1.0 UNDER ± 0.1		CHECKED BY DATE			
	1.0 OVER 10 UNDER ± 0.2		APPROVED BY DATE			
10 OVER 30 UNDER ± 0.25		MATERIAL NO.		SCALE	1:5	THIRD ANGLE PROJECTION
30 OVER ± 0.3		SEE CHART		DOCUMENT NO.	SD-505066-002	SHEET NO.
ANGULAR ± 1 °		DRAFT WHERE APPLICABLE MUST REMAIN WITHIN DIMENSIONS		THIS DRAWING CONTAINS INFORMATION THAT IS PROPRIETARY TO MOLEX INCORPORATED AND SHOULD NOT BE USED WITHOUT WRITTEN PERMISSION		



16	21.4	17.4	7.82	505066-3010	o	---	30		
			6.77	505066-2410	o	---	24		
			6.42	505066-2210	---	---	22		
			6.07	505066-2010	---	---	20		
			5.72	505066-1810	---	---	18		
			5.37	505066-1610	o	---	16		
			5.02	505066-1410	---	---	14		
			4.67	505066-1210	o	---	12		
			4.32	505066-1010	---	---	10		
			3.62	505066-0610	o	---	6		
キャリアテープ幅 CARRIER TAPE WIDTH			C	B	(A)	MATERIAL No.	HIGH VOL. TOOL	LOW VOL. TOOL	CIRCUIT
							SAMPLE PREPARATION		

SEE SHEET 1 OF 3 EC NO: J2016-0051 DRWN: ISOMEYA 2015/07/15 CHKD: KTANAKA03 2015/07/15 APPR: KMORIKAWA 2015/07/15	GENERAL TOLERANCES (UNLESS SPECIFIED)		DIMENSION STYLE MM ONLY		SCALE 2:1	DESIGN UNITS METRIC	THIRD ANGLE PROJECTION	
	0.25 UNDER	± 0.03	DRAWN BY	DATE	TITLE			
	0.25 OVER 0.5 UNDER	± 0.05	KSASAKI	2014/04/07	0.35 BB CONN. H=0.6 SSB6 RP REC. ASSY EMBSTP PKG			
	0.5 OVER 1.0 UNDER	± 0.1	CHECKED BY	DATE	molex			
	1.0 OVER 10 UNDER	± 0.2	KTANAKA03	2014/04/07				
10 OVER 30 UNDER	± 0.25	APPROVED BY	DATE	DOCUMENT NO.		SHEET NO.		
30 OVER	± 0.3	KMORIKAWA	2014/04/08	SD-505066-002		2 OF 3		
ANGULAR	± 1 °	MATERIAL NO.		SEE CHART				
DRAFT WHERE APPLICABLE MUST REMAIN WITHIN DIMENSIONS			SIZE A3	THIS DRAWING CONTAINS INFORMATION THAT IS PROPRIETARY TO MOLEX INCORPORATED AND SHOULD NOT BE USED WITHOUT WRITTEN PERMISSION				



24	29.4	25.4	13.77	505066-6410	---	---	64		
			13.07	505066-6010	---	---	60		
			12.02	505066-5410	---	---	54		
			11.32	505066-5010	---	---	50		
			10.99	505066-4810	o	---	48		
			10.62	505066-4610	---	---	46		
			9.92	505066-4210	---	---	42		
			9.57	505066-4010	o	---	40		
8.52	505066-3410	o	---	34					
キャリアテープ幅 CARRIER TAPE WIDTH			C	B	(A)	MATERIAL No.	HIGH VOL. TOOL	LOW VOL. TOOL	CIRCUIT
SAMPLE PREPARATION									

SEE SHEET 1 OF 3 EC NO: J2016-0051 DRWN: ISOMEYA 2015/07/15 CHKD: KTANAKA03 2015/07/15 APPR: KMORIKAWA 2015/07/15	GENERAL TOLERANCES (UNLESS SPECIFIED)		DIMENSION STYLE MM ONLY		SCALE 2:1	DESIGN UNITS METRIC	THIRD ANGLE PROJECTION		
	0.25 UNDER	± 0.03	DRAWN BY	DATE	TITLE				
	0.25 OVER 0.5 UNDER	± 0.05	KSASAKI	2014/04/07	0.35 BB CONN. H=0.6 SSB6 RP REC. ASSY EMBSTP PKG				
	0.5 OVER 1.0 UNDER	± 0.1	CHECKED BY	DATE	molex				
	1.0 OVER 10 UNDER	± 0.2	KTANAKA03	2014/04/07					
10 OVER 30 UNDER	± 0.25	APPROVED BY	DATE	DOCUMENT NO.		SHEET NO.			
30 OVER	± 0.3	KMORIKAWA	2014/04/08	SD-505066-002		3 OF 3			
ANGULAR ±1 °		MATERIAL NO.		SEE CHART					
DRAFT WHERE APPLICABLE MUST REMAIN WITHIN DIMENSIONS			SIZE A3	THIS DRAWING CONTAINS INFORMATION THAT IS PROPRIETARY TO MOLEX INCORPORATED AND SHOULD NOT BE USED WITHOUT WRITTEN PERMISSION					