



Chipsmall Limited consists of a professional team with an average of over 10 year of expertise in the distribution of electronic components. Based in Hongkong, we have already established firm and mutual-benefit business relationships with customers from,Europe,America and south Asia,supplying obsolete and hard-to-find components to meet their specific needs.

With the principle of “Quality Parts,Customers Priority,Honest Operation,and Considerate Service”,our business mainly focus on the distribution of electronic components. Line cards we deal with include Microchip,ALPS,ROHM,Xilinx,Pulse,ON,Everlight and Freescale. Main products comprise IC,Modules,Potentiometer,IC Socket,Relay,Connector.Our parts cover such applications as commercial,industrial, and automotives areas.

We are looking forward to setting up business relationship with you and hope to provide you with the best service and solution. Let us make a better world for our industry!



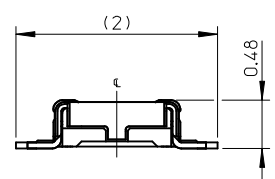
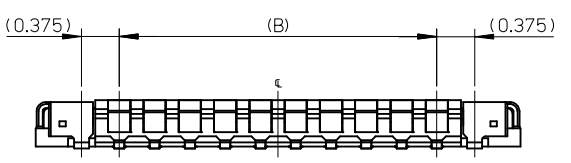
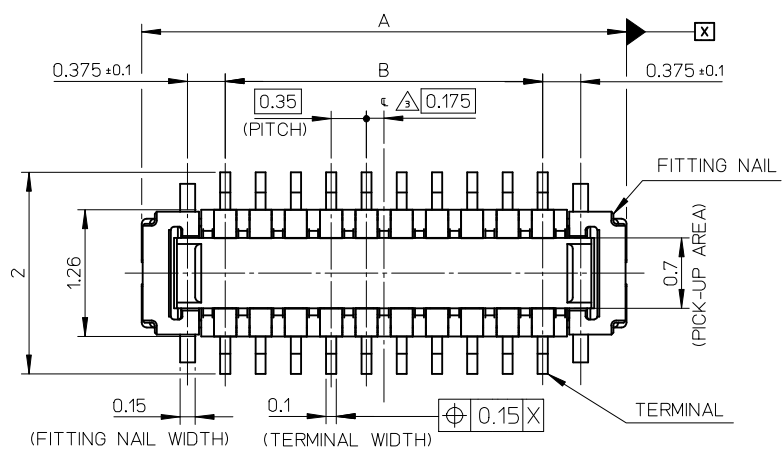
## Contact us

Tel: +86-755-8981 8866 Fax: +86-755-8427 6832

Email & Skype: info@chipsmall.com Web: www.chipsmall.com

Address: A1208, Overseas Decoration Building, #122 Zhenhua RD., Futian, Shenzhen, China





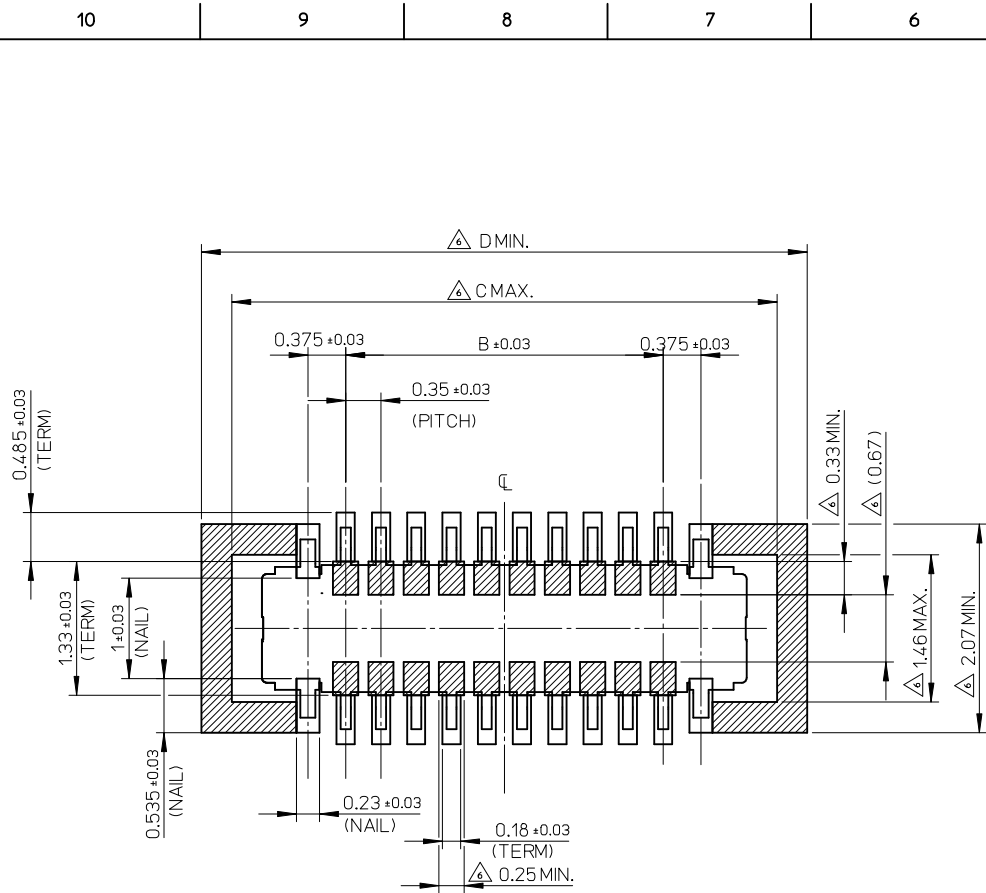
NOTES

1. MATERIAL  
 WAFER : LIQUID CRYSTAL POLYMER UL94V-0(COLOR : BLACK)  
 TERMINAL : COPPER ALLOY  
 FITTING NAIL : COPPER ALLOY
2. PLATING  
 TERMINAL :  
 GOLD / UNDER PLATING : NICKEL  
 \*DIVIDE INTO PARTS THE GOLD PLATING OF THE CONTACT AND THE TAIL PART BY THE NICKEL PLATING.
3. FITTING NAIL :  
 GOLD / UNDER PLATING : NICKEL  
 \*DIVIDE INTO PARTS THE GOLD PLATING OF THE CONTACT AND THE TAIL PART BY THE NICKEL PLATING.  
 \*EVEN THOUGH GOLD PLATING ON THE TOP SURFACE OF NAIL MIGHT BE THIN, NO FUNCTIONAL PROBLEM.
- △ APPLY FOR (CIRCUIT/2)=EVEN.
4. MATE WITH : 505066-\*\*\*10
5. TAIL AND FITTING NAIL COPLANARITY TO BE 0.08MAXIMUM.
- △ PROHIBITED AREA OF PATTERN WIRING AND SOLDER.  
 (FOR EACH AREA, THE WIRING THAT TOUCHES ON THE SOLDER CAN BE ATTACHED, THEN COVERED WITH A FILM TO KEEP SOLDER OUT.)
7. ELV and RoHS COMPLIANT.

3.56	2.96	0.70	2.36	505070-0610	0	---	6
D	C	B	A	EMBOSSED TAPE PACKAGE	HIGH VOL. TOOL	LOW VOL. TOOL	CIRCUIT
				ORDER NO.	SAMPLE PREPARATION O : TOOLED △ : WORK IN PROCESS --- : TOOLING TO BE CONFIRMED		

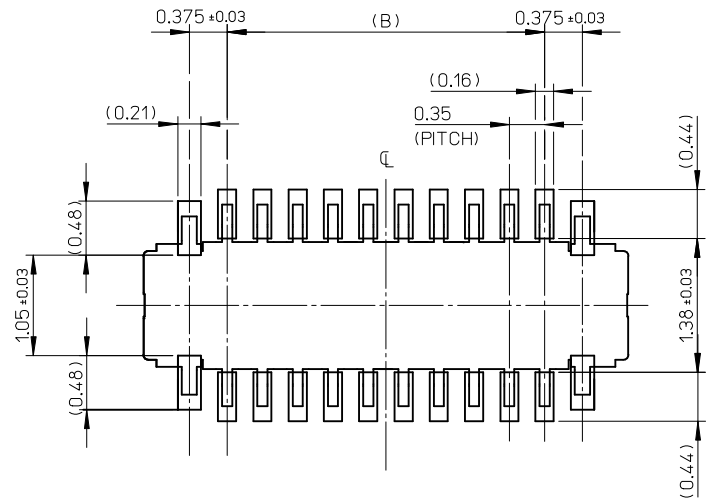
CONNECTOR SERIES No. : 505070-\*\*\*09

REVISED EC NO: J2016-1010 DRWN:MIT001 2016/03/30 CHKD:TASAKAWA 2016/03/30 APPR:KMORIKAWA 2016/03/31	GENERAL TOLERANCES (UNLESS SPECIFIED)		DIMENSION STYLE MM ONLY		SCALE 20:1	DESIGN UNITS METRIC	THIRD ANGLE PROJECTION	
	0.25 UNDER	±0.03	DRAWN BY	DATE	TITLE			
	0.25 OVER 0.5 UNDER	±0.05	KSASAKI	2014/04/15	0.35 BB CONN. H=0.6 SSB6 RP PLUG ASSY			
	0.5 OVER 1.0 UNDER	±0.1	CHECKED BY	DATE				
1.0 OVER 10 UNDER	±0.2	KTANAKA03	2014/04/15					
10 OVER 30 UNDER	±0.25	APPROVED BY	DATE	DOCUMENT NO.		SHEET NO.		
30 OVER	±0.3	KMORIKAWA	2014/05/02	SD-505070-001		1 OF 2		
ANGULAR ±1 °		SEE CHART		THIS DRAWING CONTAINS INFORMATION THAT IS PROPRIETARY TO MOLEX ELECTRONIC TECHNOLOGIES, LLC AND SHOULD NOT BE USED WITHOUT WRITTEN PERMISSION				
DRAFT WHERE APPLICABLE MUST REMAIN WITHIN DIMENSIONS		SIZE A3						



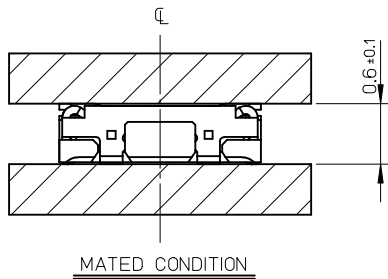
RECOMMENDED P.W.BOARD PATTERN LAYOUT (REFERENCE)

△ PROHIBITED AREA OF PATTERN WIRING AND SOLDER.  
(FOR EACH AREA, THE WIRING THAT TOUCHES ON THE SOLDER  
CAN BE ATTACHED, THEN COVERED WITH A FILM TO KEEP SOLDER OUT.)



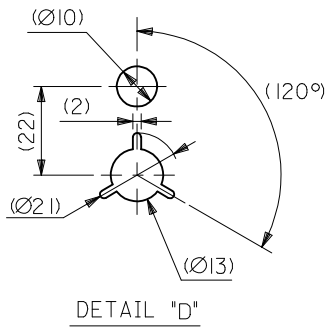
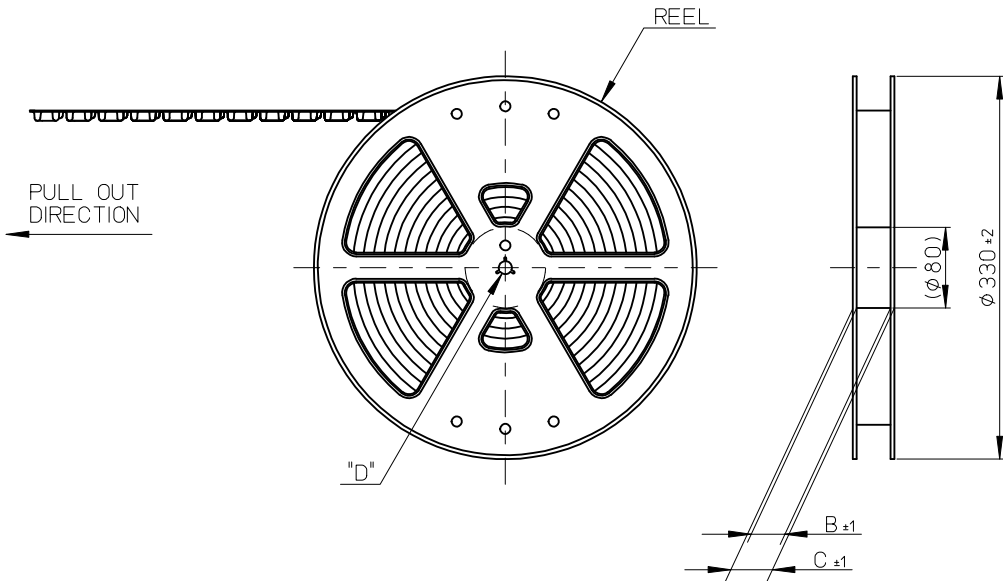
RECOMMENDED METAL MASK LAYOUT (REFERENCE)

RECOMMENDED THICKNESS OF METAL MASK : t=0.08mm  
RECOMMENDED OPEN APERTURE RATIO OF METAL MASK : 80%



MATED CONDITION

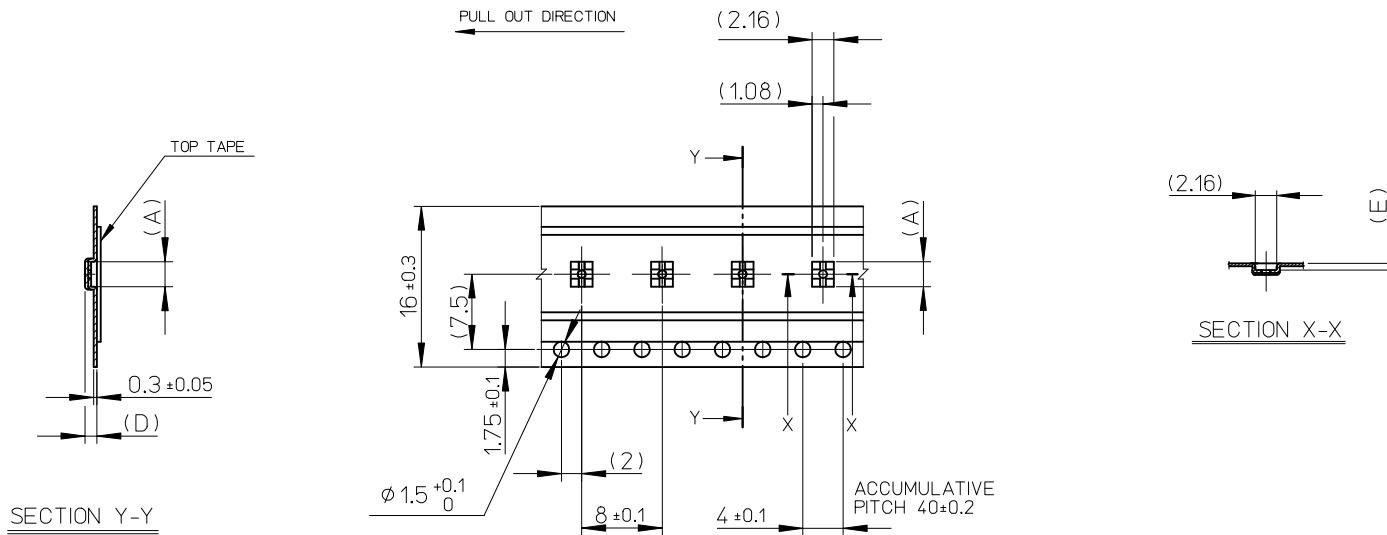
REVISED EC NO: J2016-1010 DRWN:MIT001 CHKD:TASAKAWA APPR:KMORIKAWA	2016/03/30 2016/03/30 2016/03/31	GENERAL TOLERANCES (UNLESS SPECIFIED)		DIMENSION STYLE MM ONLY		SCALE 20:1	DESIGN UNITS METRIC	THIRD ANGLE PROJECTION	
		0.25 UNDER	± 0.03	DRAWN BY KSASAKI	DATE 2014/04/15	TITLE 0.35 BB CONN. H=0.6 SSB6 RP PLUG ASSY			
		0.25 OVER 0.5 UNDER	± 0.05	CHECKED BY KTANAKA03	DATE 2014/04/15	DOCUMENT NO. SD-505070-001			
		0.5 OVER 1.0 UNDER	± 0.1	APPROVED BY KMORIKAWA	DATE 2014/05/02				
		1.0 OVER 30 UNDER	± 0.2	MATERIAL NO. SEE SHEET1		SHEET NO. 2 OF 2			
30 OVER	± 0.3	DRAFT WHERE APPLICABLE MUST REMAIN WITHIN DIMENSIONS		THIS DRAWING CONTAINS INFORMATION THAT IS PROPRIETARY TO MOLEX ELECTRONIC TECHNOLOGIES, LLC AND SHOULD NOT BE USED WITHOUT WRITTEN PERMISSION					



NOTES

- RE DETAILED DIMENSION, SEE PRODUCT DRAWING.
- NUMBER OF CONNECTORS : 3000PCS/REEL
- LEAD TAPE LENGTH
- TOP TAPE PEEL FORCE IS DEFINED BY IEC60286-3.
- MATERIAL  
 CARRIER TAPE : POLYSTYRENE  
 TOP TAPE : PET , OTHER  
 REEL : POLYSTYRENE (PS) <RECYCLE MATERIAL CONTAINED>
- ELV AND RoHS COMPLIANT

REVISED EC NO: J2016-1010 DRWN:MITO01 2016/03/30 CHKD:TASAKAWA 2016/03/30 APPR:KMORIKAWA 2016/03/31	GENERAL TOLERANCES (UNLESS SPECIFIED)		DIMENSION STYLE		MODEL NO.	505066-**10
	0.25 UNDER		MM ONLY		DESIGN UNITS	METRIC
	0.25 OVER 0.5 UNDER		DRAWN BY DATE		THIRD ANGLE PROJECTION 0.35 BB CONN. H=0.6 SSB6 RP PLUG ASSY EMBSTP PKG <b>molex</b>	
	0.5 OVER 1.0 UNDER		KSASAKI 2014/03/10			
	1.0 OVER 10 UNDER		CHECKED BY DATE		DOCUMENT NO.	SD-505070-002
10 OVER 30 UNDER		KTANAKA03 2014/03/10		SHEET NO.		
30 OVER		APPROVED BY DATE		1 OF 2		
ANGULAR ±1 °		KMORIKAWA 2014/08/01		THIS DRAWING CONTAINS INFORMATION THAT IS PROPRIETARY TO MOLEX ELECTRONIC TECHNOLOGIES, LLC AND SHOULD NOT BE USED WITHOUT WRITTEN PERMISSION		
DRAFT WHERE APPLICABLE MUST REMAIN WITHIN DIMENSIONS		MATERIAL NO.		SEE CHART		
		SIZE				
		A3				



16	0.66	1.16	2.14	17.4	2.43	505070-0610	0	---	6						
キャリアテープ幅 CARRIER TAPE WIDTH							(E)	(D)	C	B	(A)	MATERIAL No.	HIGH VOL. TOOL	LOW VOL. TOOL	CIRCUIT
											SAMPLE PREPARATION				

REVISED EC NO: J2016-1010 DRWN: ITO01 CHKD: TASAKAWA APPR: KMORIKAWA	GENERAL TOLERANCES (UNLESS SPECIFIED)				DIMENSION STYLE MM ONLY		SCALE 2:1	DESIGN UNITS METRIC	THIRD ANGLE PROJECTION		
	0.25 UNDER				± 0.03	DRAWN BY KSASAKI	DATE 2014/03/10	TITLE 0.35 BB CONN. H=0.6 SSB6 RP PLUG ASSY EMBSTP PKG			
	0.25 OVER	0.5	UNDER		± 0.05	CHECKED BY KTANAKA03	DATE 2014/03/10				
	0.5 OVER	1.0	UNDER		± 0.1	APPROVED BY KMORIKAWA	DATE 2014/08/01				
	1.0 OVER	10	UNDER		± 0.2	MATERIAL NO.		DOCUMENT NO.	SHEET NO.		
10 OVER	30	UNDER		± 0.25	SEE CHART		SD-505070-002	2 OF 2			
30 OVER				± 0.3	DRAFT WHERE APPLICABLE MUST REMAIN WITHIN DIMENSIONS						
ANGULAR	±1	°	THIS DRAWING CONTAINS INFORMATION THAT IS PROPRIETARY TO MOLEX ELECTRONIC TECHNOLOGIES, LLC AND SHOULD NOT BE USED WITHOUT WRITTEN PERMISSION								